



ST. JOHN THE BAPTIST PARISH ROUND 1 MEETING SUMMARY



ROUND 1 MEETINGS OVERVIEW

The first round of LA SAFE meetings kicked off the planning process. At these meetings, the project team presented data focused on land loss, flood risk, population movements, and economic change (see appendix). This information provided the groundwork for the community conversations. During these conversations, the participants discussed the goals and values that LA SAFE should pursue going forward.

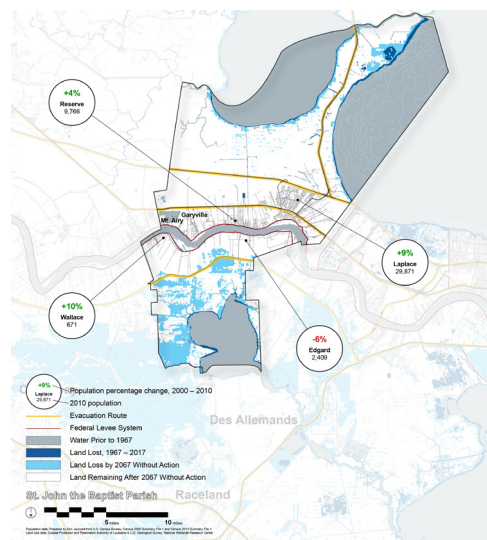
The majority of the meetings centered on two small-group activities, which focused on 3 general aspects of the project: Community & Culture, Environment & Sustainability, and Economy & Jobs. The first activity asked residents to describe the changes and challenges that they have seen over the last 50 years in their communities. This activity included a map that depicted current and future land loss and population shifts between 2000 and 2010.

The second activity asked what aspects of those three categories are important to protect and preserve, and how they can be strengthened, improved, or expanded. The project team organized the feedback from this meeting into 3 categories: Strengths, Opportunities, and Challenges.

At the meeting, the residents sat at round tables. Each table group had a table host and a table scribe. The table host facilitated the conversation and helped capture the residents' ideas. The table scribe documented the conversation.



WHAT DOES CHANGE MEAN TO YOU?

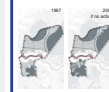


ACTIVITY INSTRUCTIONS:

1. Take a closer look at this map that shows land change and population shifts.
2. Answer the questions below.
3. Draw on the map to show where you have seen these changes.

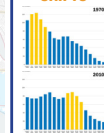
ENVIRONMENT

How have changes to the environment affected you?



POPULATION SHIFTS

How have changes in the population affected you?

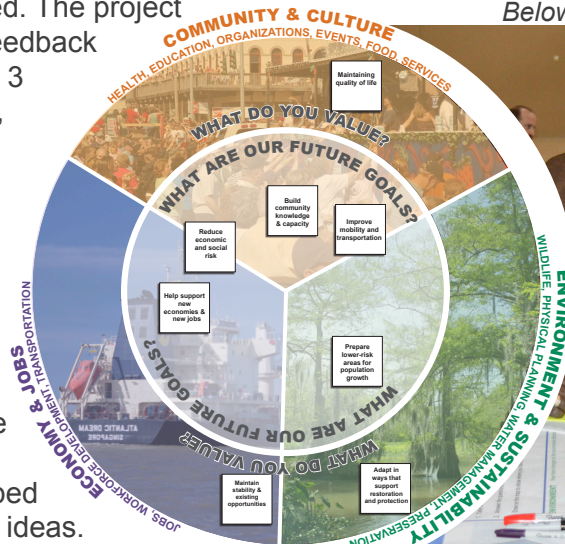


ECONOMIC CHANGE

How have economic changes in the Parish affected you?



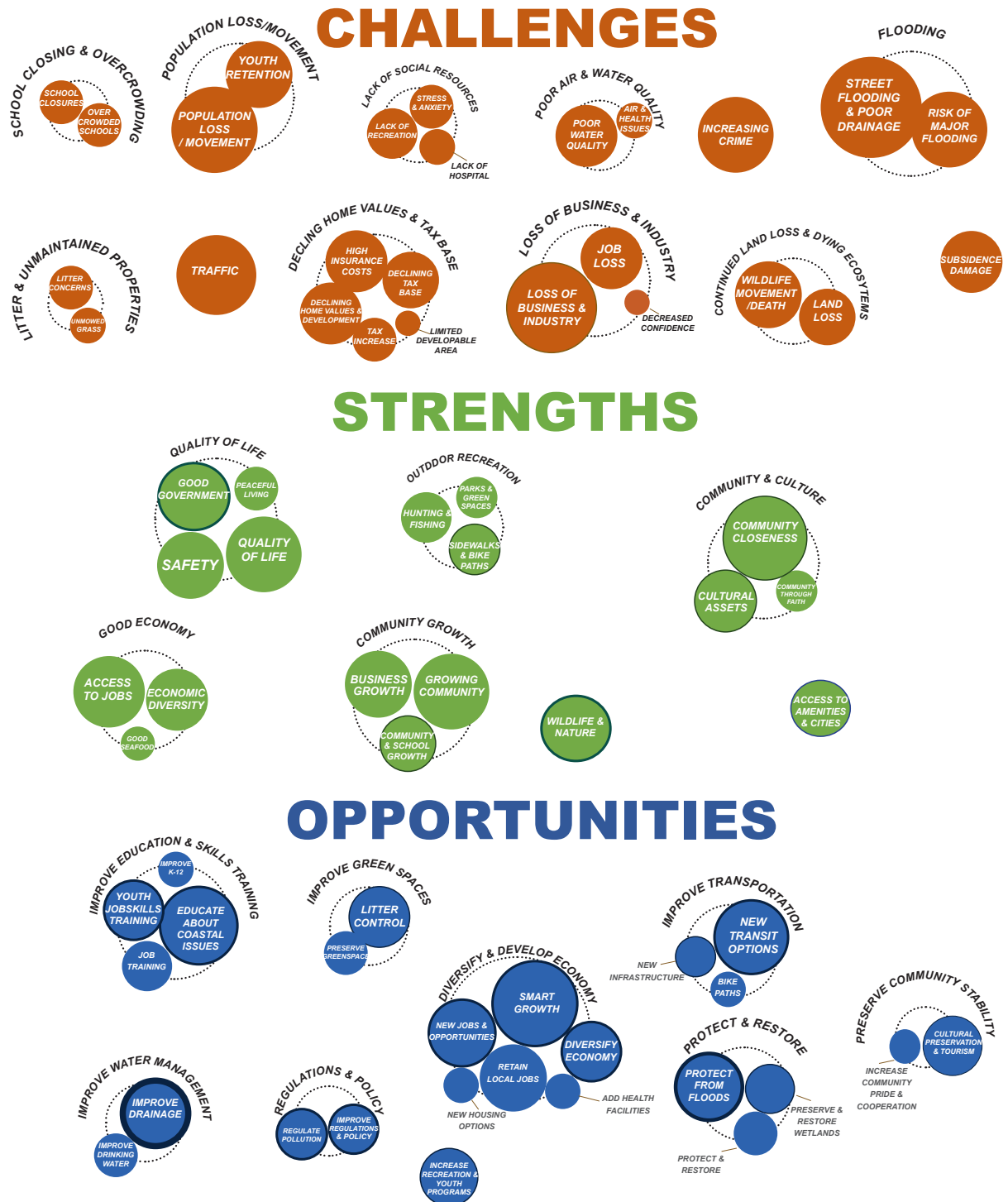
Activity 1 table sheet. See appendix for larger image.
Below: Activity 2 table sheet and residents participating.



MEETING RESULTS

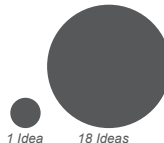
The following pages illustrate the full meeting results. The graphic on the right depicts all of the ideas grouped by similarity. The project team designed the groupings using an emergent thematic coding technique. The team grouped similar ideas into sub-groups, and then arranged the sub-groups into major categories.

The size of the circles in the graphic reflects the frequency of comments within that topic. The larger circles show the most commonly discussed topics, while the smaller circles show topics discussed less often.



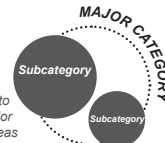
KEY

These circles represent ideas collected at Community Meeting 1.



The size of the circles indicate how many people said similar things ideas.

We grouped ideas into "Subcategories" and "Major Categories" for groups of ideas are related but not the same.



Participants placed stickers on ideas that they chose to prioritize. The number of those prioritizations are shown here as line width around the circles.



STRENGTHS

The project team transcribed all of the comments below directly from the table sheet activities at Meeting 1. Comments in bold represent the ideas that community members prioritized using sticker dots during the activity. The sizes of the subcategory circles correspond to the number of ideas within the suggestion. The subcategories are then organized under major categories, separated by dotted lines. See the key on page 21 for more information.

COMMUNITY GROWTH.....

GROWING COMMUNITY

- People coming in.
- Population increase leads to a more diverse community and schools.
- Changing demographics.
- Cultural diversity representation.
- Homes being built at higher elevations.
- Lots of new houses since 2000.
- New subdivision being built.
- Reserve— some population decline but on rise now due to industry.
- Residential market sluggish, coming back slowly.

COMMUNITY & SCHOOL GROWTH

- A lot more students after Katrina— positive impact, schools became more diverse.
- Increase in population and schools on East Bank.
- Influx of new students into schools, diversity of population.
- Lots of retirees but the young people building homes, wives are pregnant— this is wonderful, 1st time seen in years.
- More school enrollment.
- Protection levee = more people, lots of new schools.
- **Votech school local.**

BUSINESS GROWTH

- Duplicate services that are not working w/ government.
- Expanded businesses after new subdivisions. Trucking comes and goes.
- Marathon had big expansion, Monsanto expanding maybe double— \$1 B expansion.
- Monsanto may add 1500-2k jobs in St. Charles Parish.
- More businesses established.
- More businesses opening than closing— more people.
- New businesses at city limits.
- New businesses some industry doubling in size.

COMMUNITY & CULTURE

COMMUNITY CLOSENESS

- Community activities.
- Community comes together if someone has a need— do a fund raiser.
- Community interconnectedness.
- Connection to family members.
- Friends and family local. Like the small community.

- Knowing your neighbors and folks around town. Hospital closed recently (low quality of care). Community feel.
- Love my neighbors.
- Love the people.
- People taking care of people.
- Sense of community.
- Small business/ sense of place.

CULTURAL ASSETS

- Cemeteries— historic routes.
- **Culture.**
- Historic plantations.
- Landmarks, historic housing stock.
- Movie theater, Andoville fest, local entertainments when available.
- An “in-between” place.
- Tourism and nice amenities.

COMMUNITY THROUGH FAITH

- Church. Family oriented.
- Location churches.
- So many churches.

STRENGTHS

QUALITY OF LIFE

SAFETY

- Health, education. Peaceful/safe.
- Like the fact that there is not a lot of people standing around.
- Quick police response.
- Safety from regular police patrol.
- Activity trails/ bike trails.
- Safety, no real need for police.
- Safety.
- Very pleased to see more police patrolling the neighborhood.

QUALITY OF LIFE

- Affordable cost of living.
- Maintain quality of life.
- Potential.
- Real estate value.
- Health, education.

PEACEFUL LIVING

- Rural openness to River Road.
- Safe/peaceful– nice, maintain.
- Small rural area.

GOOD GOVERNMENT

- **Elected officials are reachable.**
- Public services are better.
- Sheriff responds to calls. Culture– festivals, food, friendly. Safety.
- **Elected officials on FB.**
- We have a recreation budget.

GOOD ECONOMY

ACCESS TO JOBS

- Access to local jobs/services.
- Connectivity to region.
- Chemical plants, but need to know someone to get those jobs.
- Industry maritime jobs.
- Jobs exist here.
- Jobs. Industry, strong economy.
- More job opportunity coming to parish.
- Summer camp, summer jobs.
- Work at plants allows them to live here.

ECONOMIC DIVERSITY

- Fishing industry, crabbing.
- Major employers.
- Many different restaurant types.
- Uber.
- Family stores.
- Retired– no big change in business.

GOOD SEAFOOD

- Access to fresh seafood.
- Fish and seafood prices.

STRENGTHS

OUTDOOR RECREATION

SIDEWALKS & BIKE PATHS

- Construction of bike/walk path, historic building.
- I love the walking paths and all the parish parks as a retiree.
- **Sidewalk from Reserve to La-Place along river road.**
- Walking paths well used by all kinds of people.

HUNTING & FISHING

- Better fishing.
- Enjoy hunting, fishing, shooting range.
- Hunting and fishing.
- We have a lot of access to hunting and fishing. Sportsman outdoor activities are historic.

PARKS & GREEN SPACES

- Love park on 51.
- Trees, green space, keep trees.
- Upgrades to parks are good.

NATURAL RESOURCES

WILDLIFE & NATURE

- Connecting to nature.
- **Fishing/wildlife.**
- Pleasure Bend– love the ecotourism, intertwined with nature, beautiful communities.
- **Preserve Habitat.**
- Tree canopy.
- Trees, birds, nature.
- Wildlife.
- Pleasure Bend rock jetty now starting to protect the land.

GOOD LOCATION

ACCESS TO AMENITIES & CITIES

- Access to I-10.
- Centrally located between NOLA and BR.
- **Great location of businesses and stores in my area.**
- Groceries and services are close by on the east bank.
- Location 1/2 way between BR and NO.
- Proximity to cities, access to interstate.

OPPORTUNITIES

DIVERSIFY & DEVELOP ECONOMY

SMART GROWTH

- Allocate monies for future growth for the community.
- **Balance economy and environment.**
- Green economy.
- **Growth.**
- Incentive for companies involvement in developing residents.
- Lack of planning for growth.
- Maintain population.
- Make an extra effort to tax break new businesses for success.
- Plants/businesses need to support our community more.
- Working environment that is not only industrial.

RETAIN LOCAL JOBS

- Cooperative agreement to maintain jobs in the parish.
- Cooperative agreement to maintain jobs.
- Growth?– How will we be able to grow if we can't maintain what we already have?
- Keep jobs local, hire within parishes.
- Keep jobs with local residents.
- Need farming.
- Stable job base.

DIVERSIFY ECONOMY

- Commuters should be a smarter share of workforce.
- **Diversify production.**
- More local entertainment and restaurants.
- More partnerships with industry.
- **More restaurants/retail.**
- Need hospital, restaurants, stores.

NEW JOBS & OPPORTUNITIES

- Improve opportunities for children and families.
- More job opportunities.
- More opportunities for young people to want to stay here (jobs and K-12 education).
- Need young people to be firemen (Pl. Bend).
- **New economies and new jobs.**
- **Spinoff effect.**
- Support new economies and jobs.

ADD HEALTH FACILITIES

- More medical facilities.
- New medical facilities.

NEW HOUSING OPTIONS

- Diversified housing.
- More housing options to attract residents.

PRESERVE COMMUNITY STABILITY & QUALITY OF LIFE

CULTURAL PRESERVATION & TOURISM

- Edgard– lacking for more tourism i.e. Whitney, Evergreen, could others be converted?
- Gaitreau Plantation being reserved, old Cypress Mill– timber mill & walking trail.
- Garyville– Carl Monica walking trail, needs publicity for tourism expansion.
- **Preserve and highlight historic culture.**

INCREASE COMMUNITY PRIDE & COOPERATION

- Build community pride.
- More pride in the community.

OPPORTUNITIES

IMPROVE EDUCATION & JOB TRAINING

EDUCATE ABOUT COASTAL ISSUES

- **Build community knowledge and capacity. Bring back main streets.**
- Collaboration with the school and communities.
- Educate kids about environmental and impacts early.
- Education of risk.
- **Education/outreach.**
- Environmental stewardship with education.
- Increase in environmental outreach.
- Let the public know about environmental issues.
- Taking advantage of existing relationships/ways of disseminating information.

JOB TRAINING

- Job training and education.
- Need job training. Career fair!
- Need more training (Marathon funded some Votech).
- Turns diesel mech, offshore = diversified training.

YOUTH JOB SKILLS TRAINING

- Education to fill the jobs that DO exist.
- High school classes geared toward manufacturing jobs.
- Industrial electrician training, specialty trade training.
- No youth (7th-12th) programs or employment opportunities.
- **Provide high school programs to prepare for jobs.**
- Training programs for school kids. **Youth training programs.**

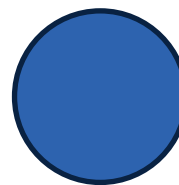
IMPROVE K-12

- Better K-12 education. More retail/shopping/restaurants.
- Education (need better youth education).

RECREATION & YOUTH PROGRAMS.....

NEW TRANSIT OPTIONS

- Better rail, light rail.
- Better transportation, need fixed route transit, a lot of people here without cars, go to different parishes for recreation.
- Bring the ferry back.
- More activities for seniors. Better transportation for seniors and those without cars.
- Need more public transportation.
- No transportation for services, improve transportation.
- Taxi cabs or Ubers.
- **Transport to local colleges.**
- **Transportation plan.**



NEW INFRASTRUCTURE

- **Crosswalk above airline and across airline near Walmart and Popeyes.**
- Need another bridge or ferry.
- Westbank is our future. Need a bridge to the westbank.

BIKE PATHS

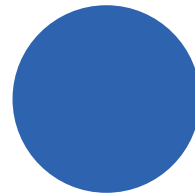
- Biggest population that uses bike path can't access, need access in Laplace.
- More bike lanes– access to everyone in parish, not just certain people.

OPPORTUNITIES

PROTECTION & RESTORATION

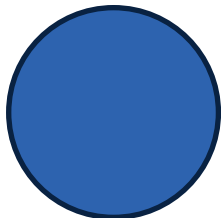
PROTECT FROM FLOODS

- Be more protected from flooding/ less anxiety about flooding.
- Build a levee.
- Build levee.
- **Get flooding under control.**
- **Levee, better levees.**
- More restoration– stop flooding from encroaching on new areas.
- **Reduce flooding on Belle Terre near post office.**



PROTECT & RESTORE

- Adapt ways that support restoration and protection.
- Need levees– stop studying and start building.
- They didn't complete the rock jetty. They made it to Heron's Bay.



PRESERVE & RESTORE WETLANDS

- **Growth boundaries to reduce risk.**
- No dirty oil.
- Reforest area. Better parks along levee. Access to water.
- Wise development w/o loss of wetlands.

IMPROVE WATER INFRASTRUCTURE

IMPROVE DRAINAGE

- All major canals drained.
- **Better drainage everywhere.**
- **Better storm water Mgmt.**
- **Improve drainage.**
- **Improve the drainage system.**
- Need drainage and sewer opener.
- **Reduce flooding on Tiffany Dr. off Airline during heavy rain.**

IMPROVE DRINKING WATER

- Cost of reverse osmosis plant is needed– have well, already need to increase chlorine amount.
- Get water from St. James, need reverse osmosis plant \$20k/mo cost to SJB.
- Water sustainability.

IMPROVING GREENSPACES

LITTER CONTROL

- **Beautification– clean ditches, pick up litter, build sense of pride, improve drainage/reduce flooding.**
- Change the litter culture of the parish.
- Culverts full of trash– needs to be cleaned.
- Increase in outreach to the community– educate people on environmental issues– litter is an issue.
- Litter abatement/civic pride.
- More social awareness, impacts of littering, understanding these (resilience) challenges and opportunities.

PRESERVE GREENSPACE

- Preserve greenspace.
- Reserve greenspace.

OPPORTUNITIES

REGULATIONS & POLICY



- Better control of emissions.
- Cleaner industries.
- **Companies held to permit waste limits.**
- **Regulate the plants and businesses from chemical.**



- **Development of master plan for parish.**
- Lessen red tape, standardize procedures for workplace development.
- Relax PTECH requirements.
- **Set high expectations and standards as guiding principles.**

RECREATION & YOUTH PROGRAMS



- Could improve recreation at senior center.
- Could use more places for rec. center for sports and family.
- More recreational opportunities for youth– they have to go outside of parish.
- **More recreational opportunities.**

CHALLENGES

FLOODING

STREET FLOODING & POOR DRAINAGE

- More street flooding.
- Need a couple hundred thousand to finish the jetty- see flooding at least three times per year, but new road may help as it is elevated.
- Quality of life halts while flooding.
- Standing water.
- Street flooding.
- Water backs up in swamps into streets when water is high.
- Water doesn't drain like it used to.
- A lot more flooding since Isaac.
- Drainage.
- Flooded where it never flooded before, we helped neighbors and friends.
- Flooding with every storm.
- I have noticed a change in my community near the railroad track after a hard rain there is a lot of water.
- Increase of water in road.
- Increased flooding, friends and family lost home due to flooding.
- Increased flooding, no personal effect, trouble getting to work or school, help friends/family emotionally.
- More floods in homes.

RISK OF MAJOR FLOODING

- Lived in area since 1981- saw a rain event in Aug. 2016 last year where I saw flooding in front of the house and intense river flooding.
- Flooding from lake.
- I was affected by flood, Hurricane Isaac servitude shifted.
- My sister flooded out, we had to help her with purchase of items she needed, she did not get help.
- Neighbors flooded in reserve- either side of Christian church, one side flooded & one didn't.
- New Orleans levees caused flooding.
- Rising water.
- Water wells salt water.
- Isaac flooding.

INCREASING CRIME.....

INCREASING CRIME

- Crime increase.
- Crime increased.
- Increased population, increased crime rate.
- More crime.
- More people in LaPlace, more crime.
- Need to address crime.
- Not very safe to walk in the neighborhood.
- Safety- not as safe.
- We now have more crime.

CHALLENGES

CONTINUED LAND LOSS & DYING ECOSYSTEMS

WILDLIFE MOVEMENT /DEATH

- Have to go farther away for hunting and fishing.
- Maurepas swamp dying– almost nothing there anymore.
- More wild animals migrating into subdivision.
- Population growth increasing natural habitat loss.
- River raises, water leaks under levee kills plants & trees.
- Species native to Texas here.
- Vegetation on the levee diminishing.

LAND LOSS

- Habitat loss/fewer species due to population growth.
- Lake Des Allemandes loses 17' of land per year.
- Land settling.
- Less land along lake.
- Need a diversion to protect Maurepas.

SUBSIDENCE DAMAGE

SUBSIDENCE DAMAGE

- Subsiding.
- Concern about cost of maintaining personal property and businesses as a result of subsidence/ sea level rise.
- Driveways cracking more than normal.
- Slight shift in home.
- Streets and sidewalks cracking.
- Subsiding, house sinking.

LOSS OF BUSINESS & INDUSTRY

LOSS OF BUSINESS & INDUSTRY

- Bigger ships– losing businesses to other places.
- Business closing.
- Businesses left.
- Does not attract new business.
- **Failure to connect locals to jobs.**
- Impact on agriculture.
- Interruption of work in business.
- Many businesses closed after hurricanes/floods.
- Maurepas changed a lot– in early 60s/70s there were berms, 3-4' elevations turned to swamp
- No new businesses in the parish maybe because of flooding post- Isaac.
- Not much new businesses.
- Only have 6 high school students, but no jobs back there (Pleasure Bend).
- School changes, businesses closing.

JOB LOSS

- Gap with income.
- High paying jobs aren't there because of competition.
- Lack of opportunity for people to get jobs because the programs are not in place to prepare people for jobs.
- Lower income as we all age.
- More difficult to get a job without a college degree.
- Not enough local employment.

DECREASED CONFIDENCE

- Less winner mentality.

CHALLENGES

POPULATION LOSS/ MOVEMENT.....

POPULATION LOSS / MOVEMENT

- Abandoned, vacant and decrepit structures from flooding.
- Because of the Veteran Bridge residents, relocated.
- Changes in demographics playing out in neighborhoods.
- Losing people.
- Loss of culture due to new developments.
- Moved here due to Katrina.
- No new neighbors because of water.
- People moving to parishes upriver or across the lake.
- Population change.
- Population shift.
- Shift in age moving out and older people would like to, but cannot afford to.
- Too many strangers coming in.

YOUTH RETENTION

- A lot of retirees in the area.
- A lot of younger people leaving for bigger opportunities.
- Aging population.
- Parish is aging as young people leave and older people stay.
- School enrollment dropped west of St. John.
- Some teens go to work, rather work than be in school.
- Younger generations choose to leave the community for opportunities outside.

DECLINING HOME VALUES & TAX BASE

DECLINING HOME VALUES & DEVELOPMENT

- Most homes came back but a lot sold after Ike.
- Much development in 1999, not now.
- People are selling, but at a lower price, maybe?
- People not buying homes.
- Property values going down.
- Some people trying to raise their homes but it's expensive and tedious.

DECLINING TAX BASE

- Less people, less taxes collected for school improvement.
- Less taxes collected which will stunt the local government's forward move.
- People moving out, lowers property taxes.
- Tax base decreased.
- Tax base leaving the parish because people work but don't live here.

HIGH INSURANCE COSTS

- Flood insurance.
- Higher flood insurance.
- Increased cost for homeowners.
- Increased flood insurance.
- Insurance rates increase.
- People flooding who don't have insurance.

TAX INCREASE

- More tax.
- Tax increase.
- Taxes going up.

LIMITED DEVELOPABLE AREA

- Not much land left on East bank of the river left to develop.

CHALLENGES

TRAFFIC



- Increase in congestion on roads.
- Marathon expansion= increased traffic– construction traffic and extra commuter traffic.
- More people commuting to work but not living here.
- More traffic.
- More traffic.
- Plant expansions increased traffic on roads.
- Too much traffic on interstate.
- Traffic and grass for storms.
- Traffic has gotten worse.
- Trucks using W. 5th St. instead of Airline– this degrades the road.

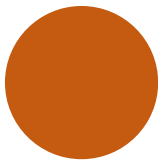
LACK OF SOCIAL RESOURCES



- Bowling alley left and is missed by residents.
- Bowling alley left.
- Loss of recreation land along the levee.
- Not much change in retail.



- Anxiety.
- Anxiety.
- Social/family stress– trying to help family/neighbors.



**LACK OF
HOSPITAL**

- River Parish Hospital closed down, we have to travel 25-30 miles for a hospital.
- River Parish Hospital reduced to only an emergency room, Dr.'s are in Metairie.

POOR AIR & WATER QUALITY



- Air, water quality, pollution from industrial waste.
- Boil water advisories too often (alarming).
- Dirty water, lowest quality in the state.
- Drinking water changes.
- Water quality.
- Water supply is jeopardized.



- More allergies since Isaac.
- Toxic air and health issues.

CHALLENGES

SCHOOL CLOSURES & OVERCROWDING



- Decline of education system.
- Our Lady of Grace closed recently w/in last 4 years– was by Archdiocese of New Orleans.
- School flooded post-Isaac, they are building the school for fewer students.



- Increase in students in schools/ overcrowding.
- One high school, need more, doesn't fit needs of community.
- Schools– public schools ESJ way over-populated. Were going to split but it failed to pass WSJ has shrunk in size.

LITTER & UNMAINTAINED PROPERTIES



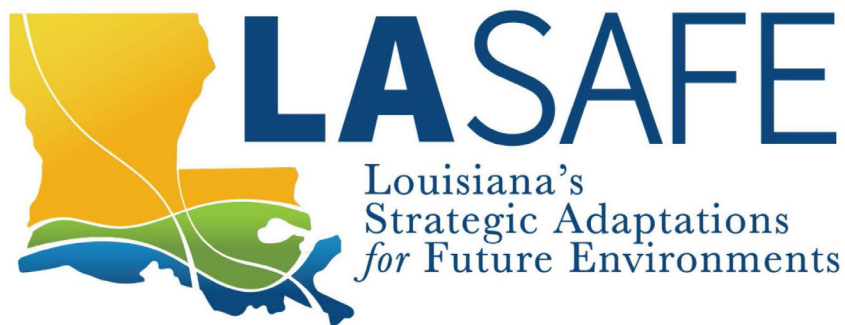
- Chemical disposal.
- Garbage pickup not consistent (should be twice a week– sometimes only once) Facility closes too early.
- Litter– major issue in this parish.



- High grass on lands.
- Not cutting grass on different lands.

APPENDIX

The appendix follows this page. It includes maps and graphs shown during the first St. John Parish LA SAFE meeting. The appendix illustrates land loss, flood risk, population shifts, and economic activity in the parish. Larger examples of the table sheets used at the meeting follow the maps and graphs.



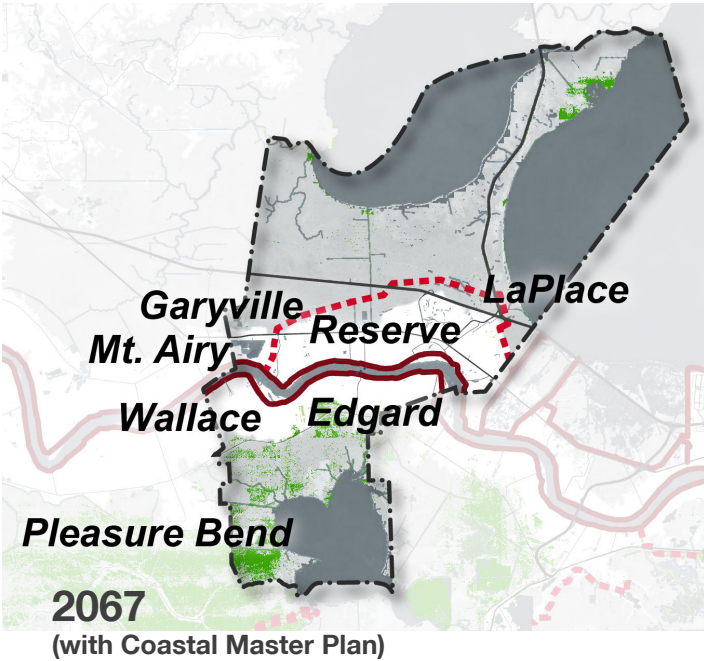
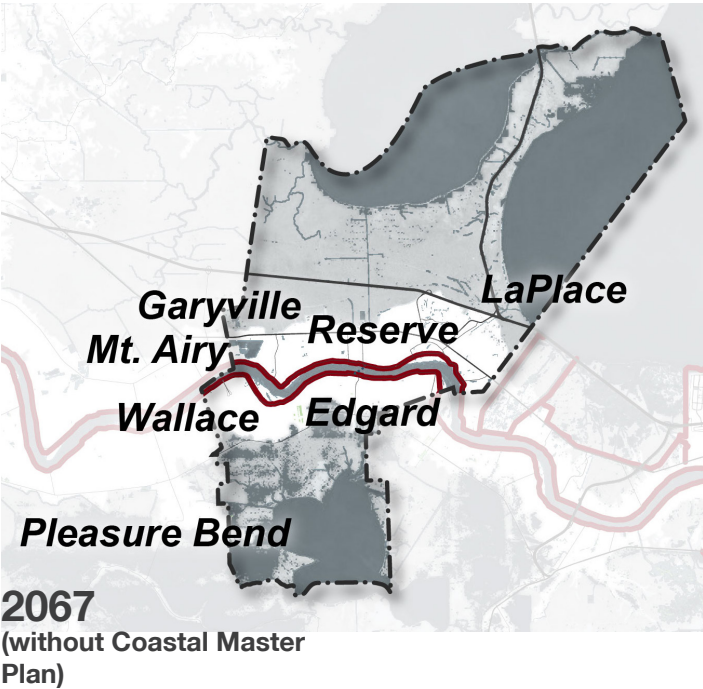
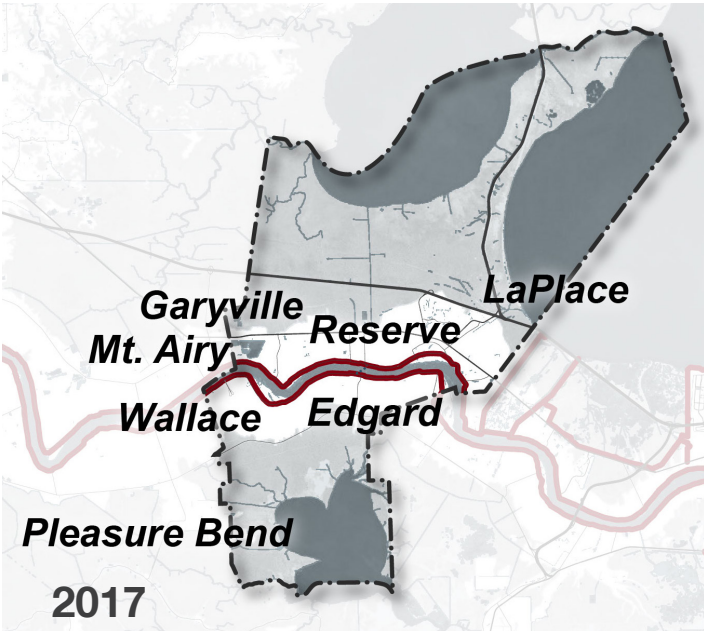
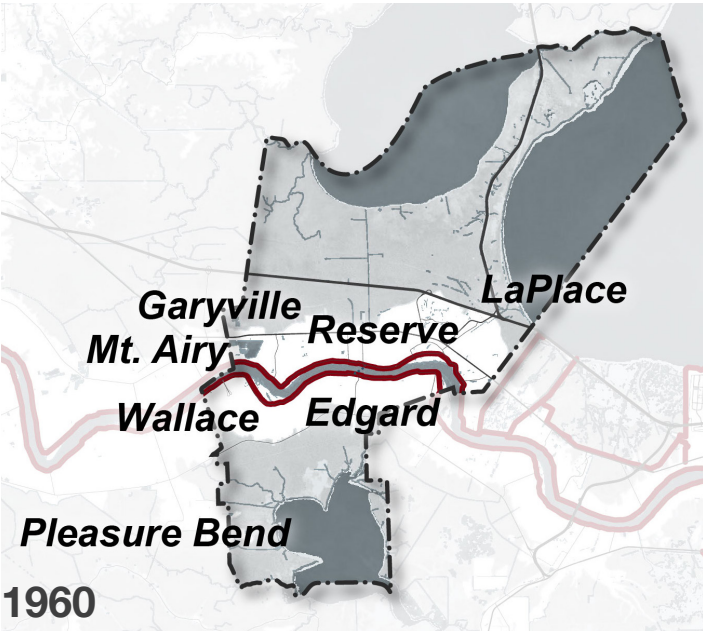
STAY CONNECTED!

Website: lasafe.la.gov
Facebook: [facebook.com/livelasafe](https://www.facebook.com/livelasafe)
Twitter: @livelasafe
Instagram: @livelasafe
Email: info@livelasafe.org

GET IN TOUCH!

LA SAFE point of contact:
St. John the Baptist Parish
 Lauren Marschall
lmarschall@cpex.org
 225.3389.7197

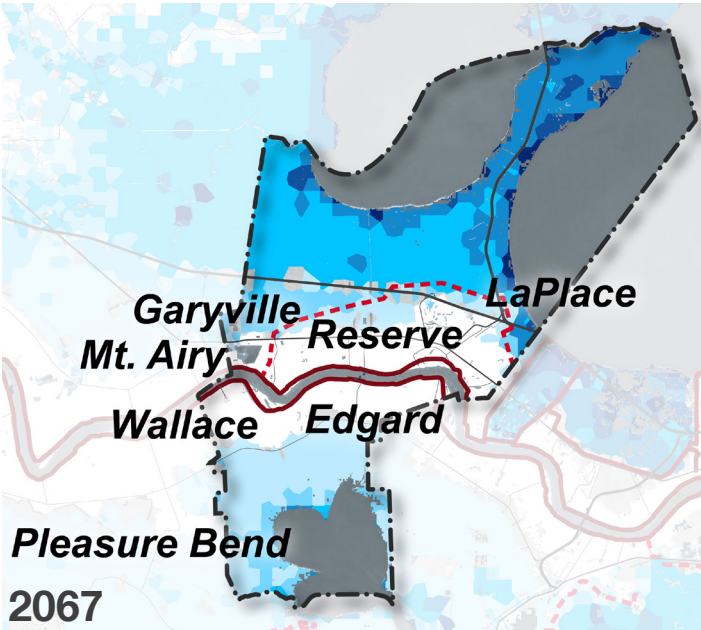
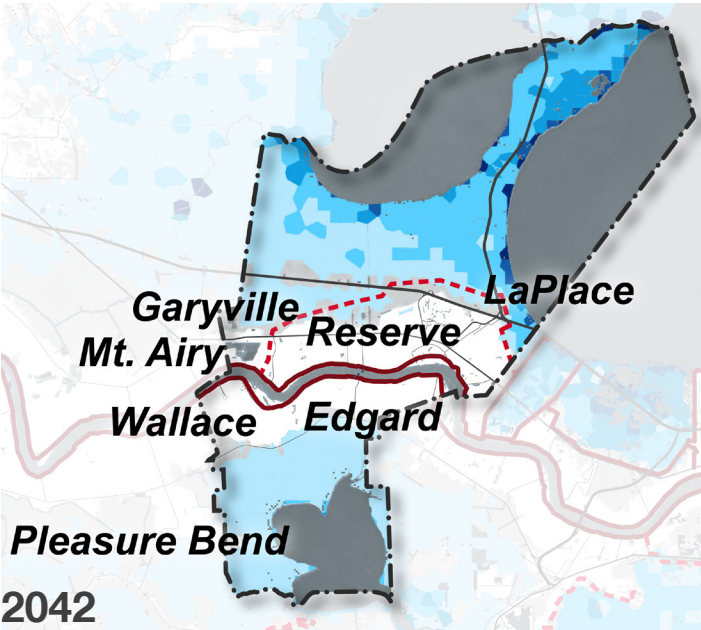
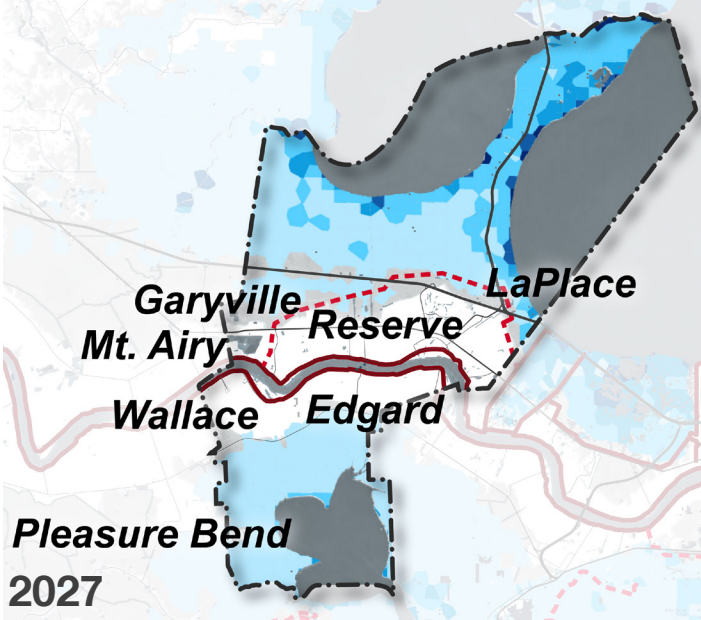
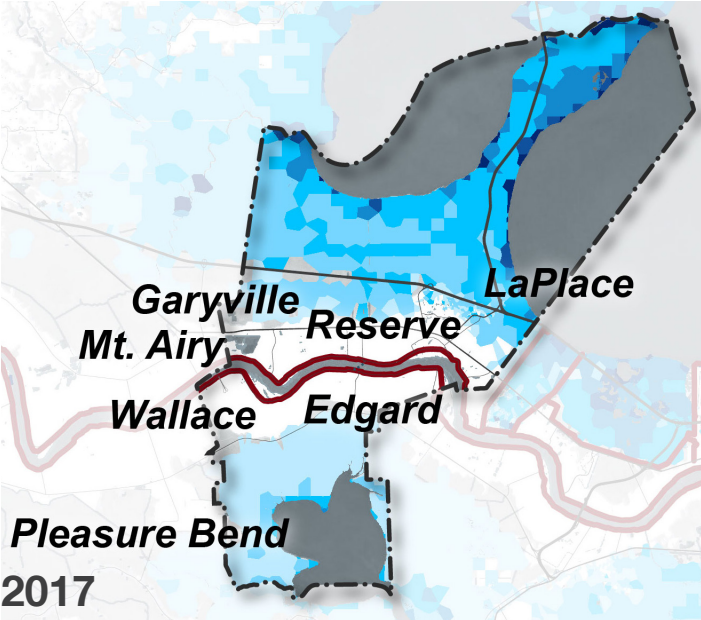
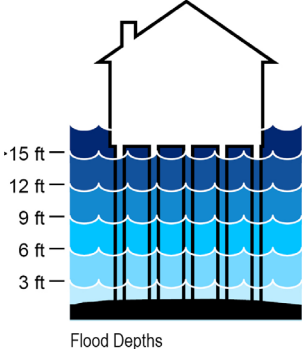
LAND LOSS OVER TIME



This data was provided by CPRA and were originally produced to inform the development of the 2017 Coastal Master Plan.

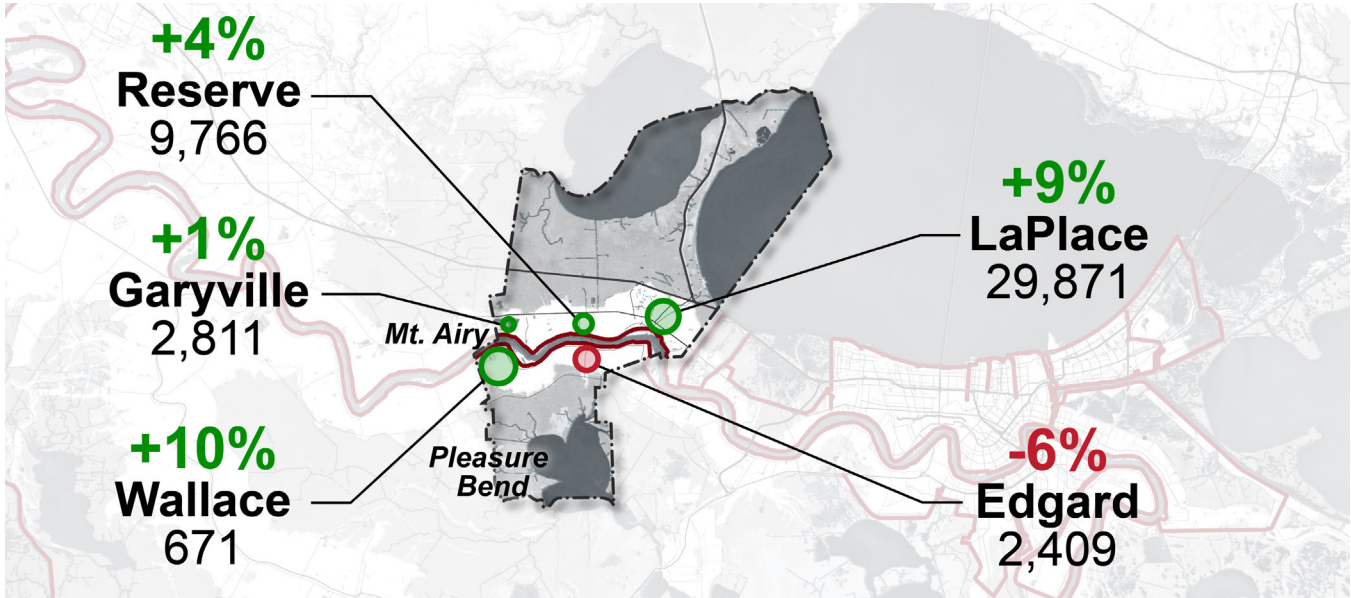
FLOOD RISK

All shown with Coastal Master Plan



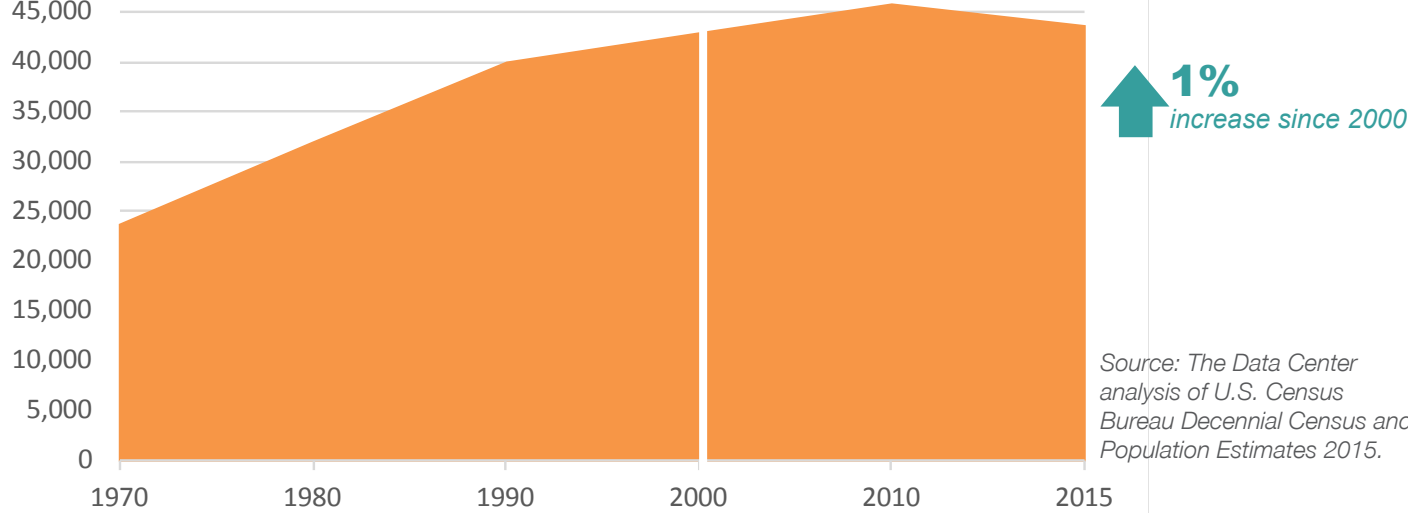
This data was provided by CPRA and were originally produced to inform the development of the 2017 Coastal Master Plan.

POPULATION CHANGES
IN ST. JOHN COMMUNITIES 2000-2010



Data prepared by ESRI, sourced from U.S. Census Bureau, Census 2000 Summary File 1 and Census 2010 Summary File 1.

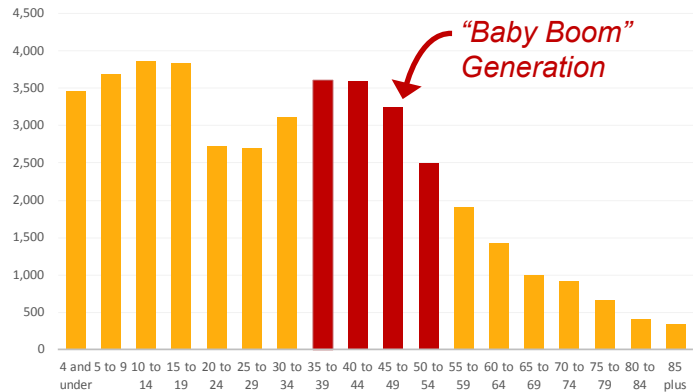
POPULATION CHANGE SINCE 1970



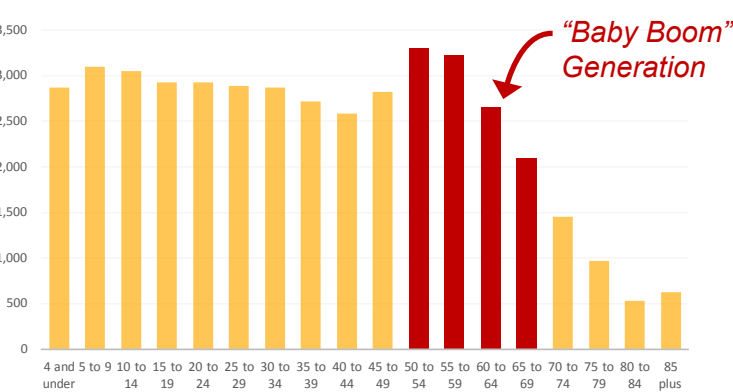
Source: The Data Center analysis of U.S. Census Bureau Decennial Census and Population Estimates 2015.

POPULATION BY AGE, 2000 - 2015

YEAR 2000
POPULATION: 43,044



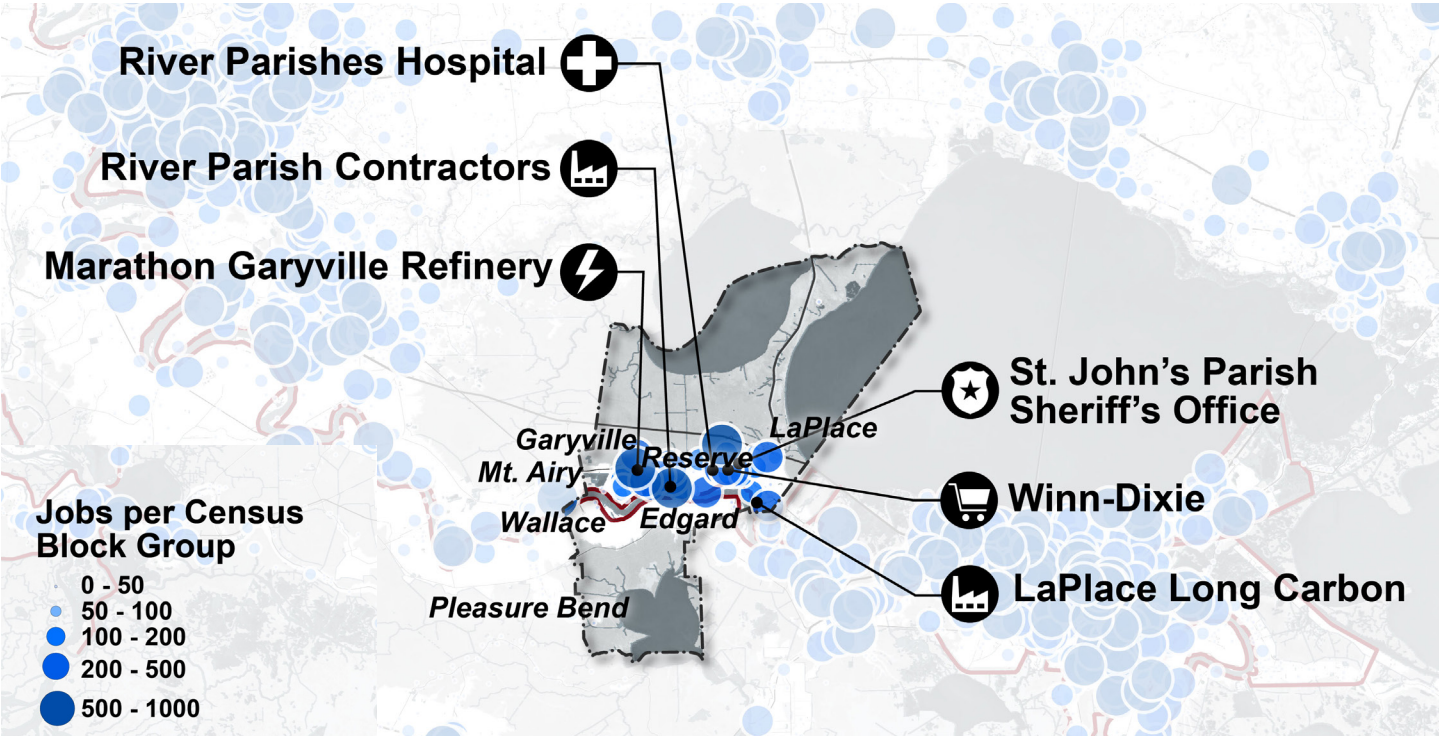
YEAR 2015
POPULATION: 43,626



Source: The Data Center analysis of U.S. Census Bureau data from the decennial census.

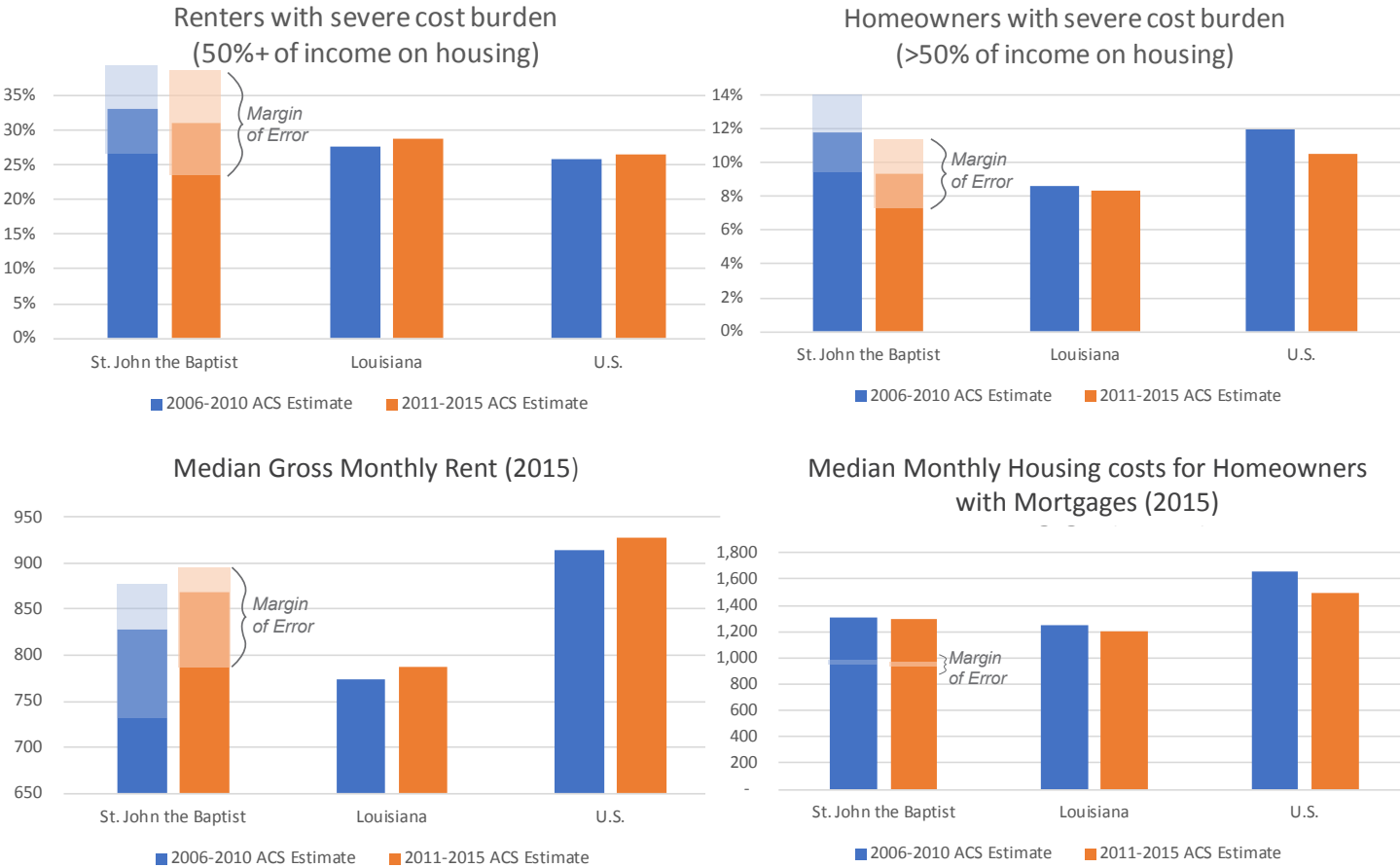
MAJOR EMPLOYMENT CENTERS

Source: US Census, Infogroup published under USDOL Guidance



HOUSING TRENDS IN ST. JOHN THE BAPTIST PARISH

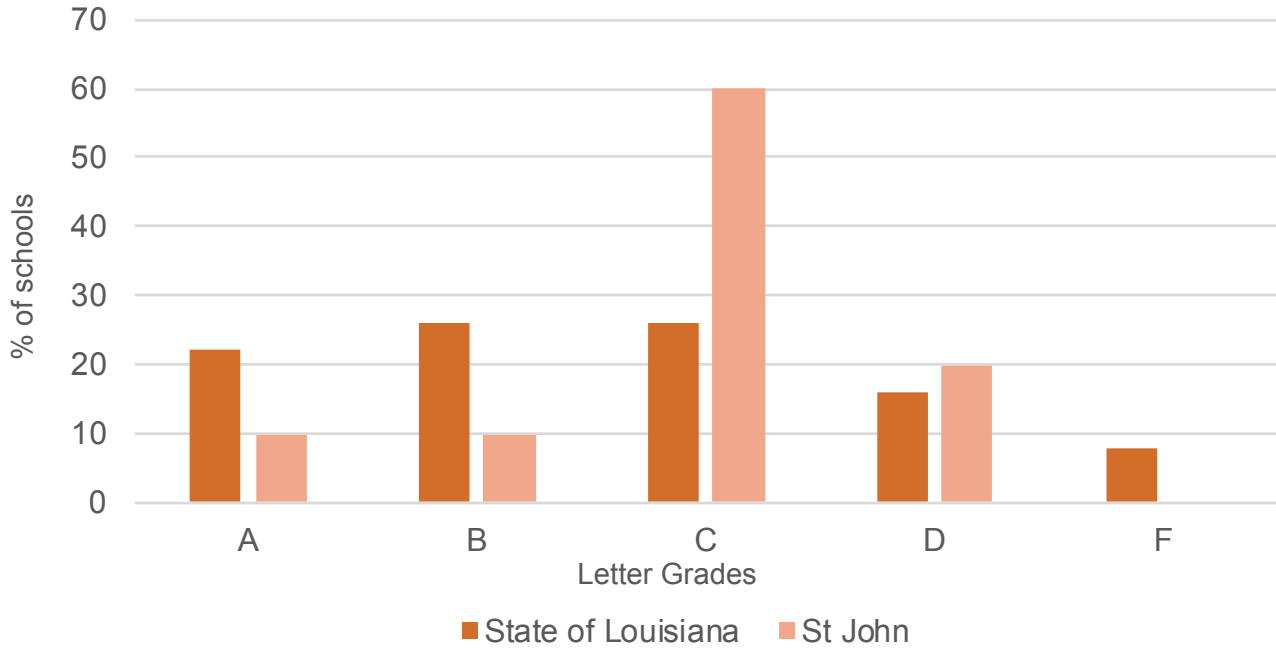
Source: The Data Center Analysis of U.S. Census Data; Notes: Estimates of % Owner Occupied Housing for Plaquemines and St. John the Baptist are from 2015 ACS Supplemental Estimates. Estimates from a range of years (2006-2010 or 2011-2015) represent an average across the listed years.



PARISH SCHOOL PERFORMANCE

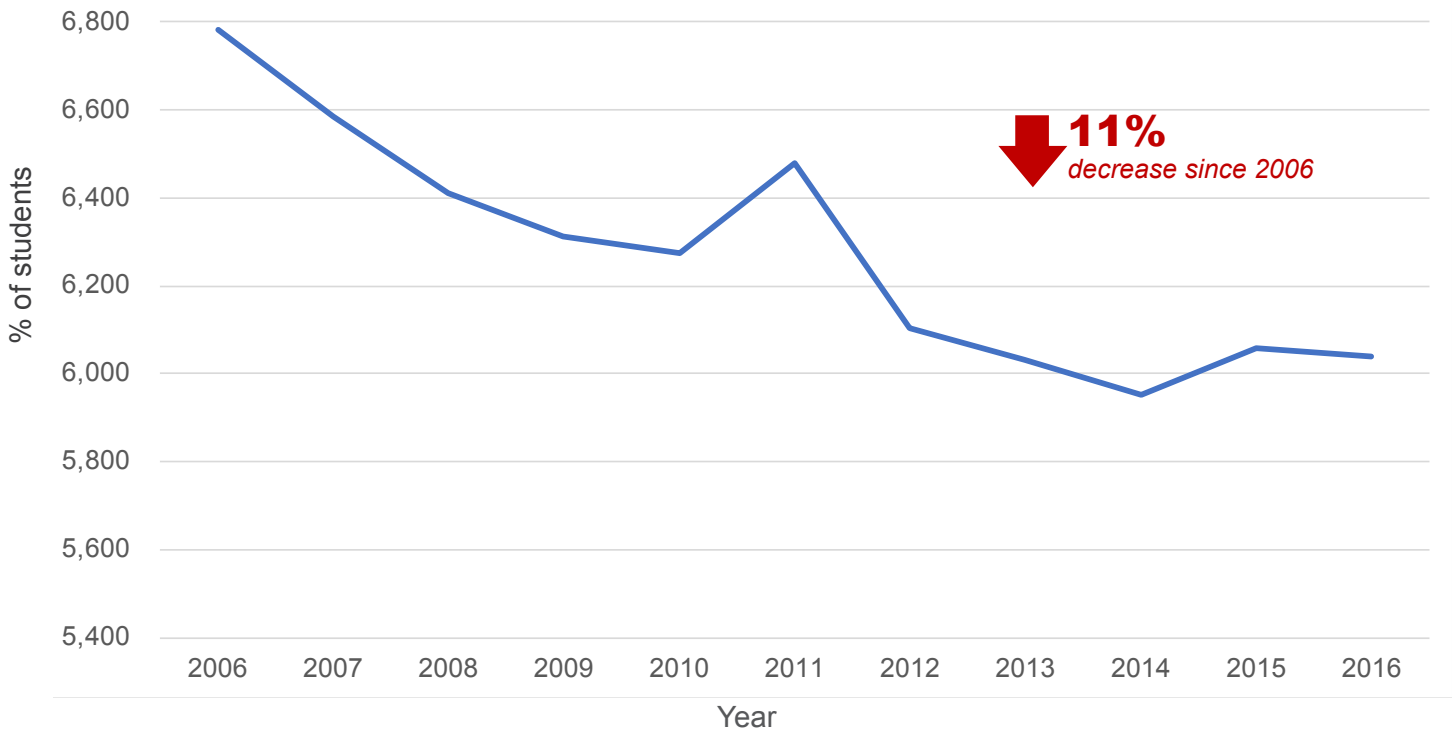
2015-2016 District Report Card

Source: Concordia analysis of "2015-2016 School District Report Cards," Accessed April 2017, <http://www.louisianabelieves.com/data/reportcards/2016/>



PARISH SCHOOL ENROLLMENT

Source: Data Center analysis of "Multiple Statistics By Site For Total Reported Students" Tables from the Louisiana Department of Education, Accessed April 2017, <http://www.louisianabelieves.com/resources/library/enrollment-counts>



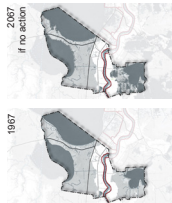
ACTIVITY 1 TABLE SHEET
(originally 36"x48")

WHAT DOES CHANGE MEAN TO YOU?

ACTIVITY INSTRUCTIONS:

1. Take a closer look at this map that shows land change and population shifts.
2. Answer the questions below.
3. Draw on the map to show where you have seen these changes.

ENVIRONMENT How have changes to the environment affected you?



Source: USGS & CPRA

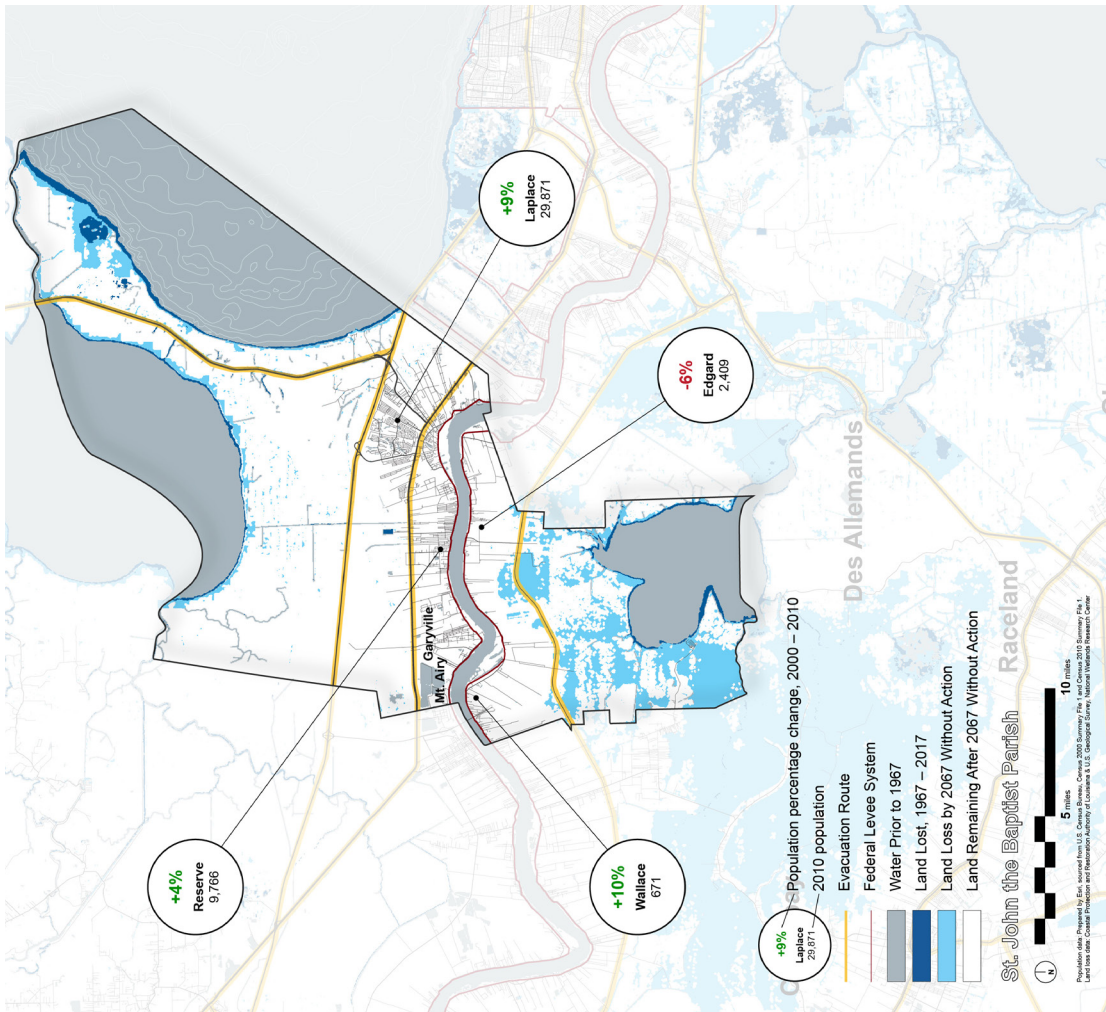
POPULATION How have changes in the population affected you?

SHIFTS



ECONOMIC How have economic changes in the Parish affected you?

CHANGE



ACTIVITY 2 TABLE SHEET
(originally 36"x48")

ADAPTATION GOALS

Tell us what adaptation goals are most important to you.

The outer circle is for you to list what you value in the Parish.

The inner circle is for you to list what you think future goals should be.

1. Write your ideas on Post-it notes and place them on the sheet. Include your zip code on your ideas.
2. As a group, choose your top 10 favorite ideas, and place stickers on them.

