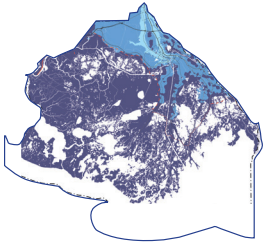


### Lake Boudreaux Living Mitigation

The Lake Boudreaux Living Mitigation project is a Resilient Infrastructure and Community Nonstructural Mitigation/Flood Risk Reduction project that will be a model for how certain geographies think through a future with increasing flood risk. This project will operate as one of multiple lines of defense that will work together to protect the people and property of Terrebonne Parish. This project will create over 300 acres of terraces and marshland within the Morganza to the Gulf risk reduction system that will assist in reducing the impacts of storm surge. The terraces also have environmental benefits such as enhancing submerged aquatic vegetation growth, restoring habitats, and trapping suspended sediments generated by wind and wave action.

During the first round of LA SAFE meetings, the project team hosted stakeholders of Terrebonne Parish at the Houma Terrebonne Civic Center in Houma, Louisiana. At this meeting, many attendees pointed out Terrebonne Parish's many strengths, including the fact that it is a sportsman's paradise with an abundance of natural beauty. To be more specific, approximately 40 datapoints directly relate back either to the parish as a sportsman's paradise or to the parish's natural beauty. Additionally, attendees mentioned issues of flooding, land loss and a need for environmental restoration as significant challenges to the parish over 55 times. The Lake Boudreaux project presents an opportunity to synthesize all of these challenges and opportunities into a single project that provides multiple public benefits. This project was designed in partnership with parish staff and has support from parish leadership. As a small-scale restoration and protection project that doubles as a public amenity, the Lake Boudreaux Living Mitigation project aligns closely with the public's vision for this region of Terrebonne Parish and directly addresses the opportunities and challenges residents identified throughout the LA SAFE engagement process. The project ranked number one out of the six projects presented in the fifth and final round of meetings in Terrebonne parish.





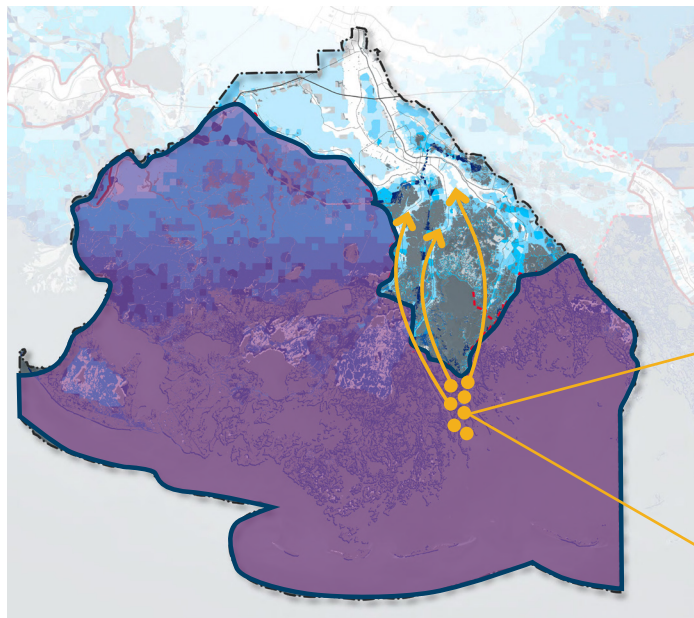
### Buyouts for Permanent Resident Households

The Buyouts for Permanent Resident Households program is a Resilient Housing project that seeks to relocate the relatively few homeowners still living outside of the Morganza to the Gulf structural protection system. Areas not protected by the structural protection system are projected to experience very high flood risk. In Terrebonne Parish, most permanent residents living outside of the Morganza to the Gulf are located on Isle de Jean Charles; the State of Louisiana is in the process of resettling Isle de Jean Charles residents who would like to move to higher, safer ground. The Buyouts for Permanent Resident Households program would provide relocation assistance for the few permanent households outside of Morganza who are not part of the Isle de Jean Charles resettlement program, of which there are approximately seven. This program would be reinforced with policies intended to prevent future permanent residential development outside of the Morganza alignment.

The Buyouts for Permanent Resident Households program emanated from Terrebonne Parish Government officials in consultation with local officials in down bayou locales including those areas outside of current and planned structural protection systems. Additionally, through LA SAFE's outreach and engagement efforts, citizen participants highlighted the following concepts which would support a strategic buyout program:

- Create a system for conservation easements
- Implement regulations restricting certain forms of development in high risk areas
- Reduce economic and social risk
- Account for decreasing home values in high risk environments precluding current residents from selling and moving to higher ground
- Decrease availability of government services down bayou, so people move to higher ground where services are more readily available
- Account for populations moving upland because of increasing insurance rates

Finally, more than 80% of citizen participants agreed with a future vision for high risk environments that included fewer permanent resident households and more seasonal and workforce housing.



### Buyout program for permanent residents outside of Morganza to the Gulf

Residents who accept the voluntary buyout will receive funds to relocate to higher ground within Terrebonne Parish.

