

Mental Health and Substance Abuse Program

The Mental Health and Substance Abuse Program for Plaquemines Parish is a Public Services/ Education program as outlined in the LA SAFE Guidelines. Areas projected to experience high future flooding risk are, in many cases, currently experiencing significant environmental, cultural, economic and social challenges. Severe, repetitive flooding events in recent years have devastated many low-lying communities along our coast, especially in Plaquemines Parish. As these events have occurred, populations have already started moving upland, disrupting community cohesion and the coast's broader social fabric. These impacts, compounded with unfavorable future projections, have taken a significant emotional toll. This program will provide case management services for residents struggling with mental health and substance abuse issues. These services will help disadvantaged populations living in at-risk communities work through the emotional impacts of past disaster events and future increased flood risk. Plaquemines Community C.A.R.E. is an existing program that provides an array of mental health and substance abuse services to residents of Plaquemines Parish. The LA SAFE contribution will help maintain the existing programs and expand their services and reach.

During the first round of LA SAFE meetings, the project team hosted residents of Plaquemines Parish at the YMCA in Port Sulphur, Louisiana. The data gathered during this meeting clearly reveal residents' anxiety about flood risk in addition to stresses over the current and future condition of the places they call home. In the second round of meetings, in which the project team met with smaller groups of residents in more localized public settings, substance abuse and the need for mental health services were first raised as major public health challenges in the parish. During and after the third round of public meetings, resident desire for programs to help those dealing with substance abuse and mental health issues became apparent. During the third round of meetings, the project team used an anonymous polling software to ask attendees direct questions related to an array of differing topics such as flooding, land use, building regulations and mental health and substance abuse. The results of the anonymous polls indicated to the project team that mental health and substance abuse are both sensitive topics and relevant issues in Plaquemines. When asked to give project, program and policy suggestions in the third round, residents recommended investing in programs that expand mental health services. Although this project did not emerge as the top preference in the fifth round public polling, it does have firm support from parish leadership, a Louisiana legislature representing Plaquemines and, more importantly, an established partner already providing these services in the community and eager to expand to meet growing need.



Services provided by Community C.A.R.E. Centers

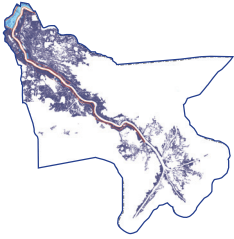
These are two areas of service that Community C.A.R.E. Centers provide that would be applicable for funding under this program.

Substance Abuse Center for Adolescents & Adults

- Assessments
- Education
- Counseling
- Intensive IOP Programs

Behavioral Health & Wellness Center

- Individual Counseling
- Family Counseling
- Group Counseling
- Anger Management
- Mind/Body Skills training
- Play Therapy
- Child Psychiatry
- Disaster Counseling



Plaquemines Harbor of Refuge

The Plaquemines Harbor of Refuge project is primarily a Resilient Infrastructure project located in Empire, Louisiana. Plaquemines Parish is a Sportsman's Paradise with some of the world's best commercial and recreational fishing. The seafood industry is one of the leading employers in Louisiana, producing millions of pounds of shrimp, oysters, crabs and fish annually. However, as flood risk increases and land loss continues to occur, this industry's viability faces a significant threat – specifically as it relates to vital equipment and infrastructure. This proposal would create a harbor of refuge for vessels to shelter in place during disaster events. The parish-operated harbor would incorporate marina amenities, wet-and dry-docking facilities as well as green infrastructure to help manage stormwater.

During the first round of LA SAFE meetings, the project team hosted residents of Plaquemines Parish at the YMCA in Port Sulphur, Louisiana. At this meeting, attendees made numerous comments about the opportunities and challenges facing the seafood industry, local businesses and the economy at large. Attendees referenced one of these three topics a combined 77 times during this first meeting. In the second round of meetings, attendees from throughout the parish again stressed the need to improve the economic viability of the parish, especially as it relates to the seafood industry. During this first meeting, attendees also began expressing the need to expand current harboring capabilities. On tabletop maps, attendees marked potential locations for a new harbor of refuge. Through this activity, Empire was identified as a location with existing infrastructure that is not sufficient to meet the current need. In meeting rounds three and four in Plaquemines Parish, the project team continued to work collaboratively with residents as well as parish leadership to develop a project based on the ideas presented by residents in previous rounds. Through additional outreach to partners such as the Louisiana SeaGrant and Coastal Communities Consulting, it became increasingly apparent that the parish needed more harboring capacity during peacetime in addition to during disaster events. The project enjoys the support of both parish officials and residents, and it aligns with information gathered throughout the public engagement efforts of LA SAFE. The community affirmed its support for this project in person and online in the final round of meetings, when residents collectively chose this project as their number one preference.



Prototype Perspective View



Prototype Plan View

- 1 Harbor of Refuge and Boat Docks
- 2 Picnic Pavilion (optional)
- 3 Raised Convenience Store and Restrooms (optional)
- 4 Seafood market (optional)
- 5 Permeable parking and bioswales
- 6 Tree plantings and bioswales



Precedent images of harbors of refuge and seafood markets