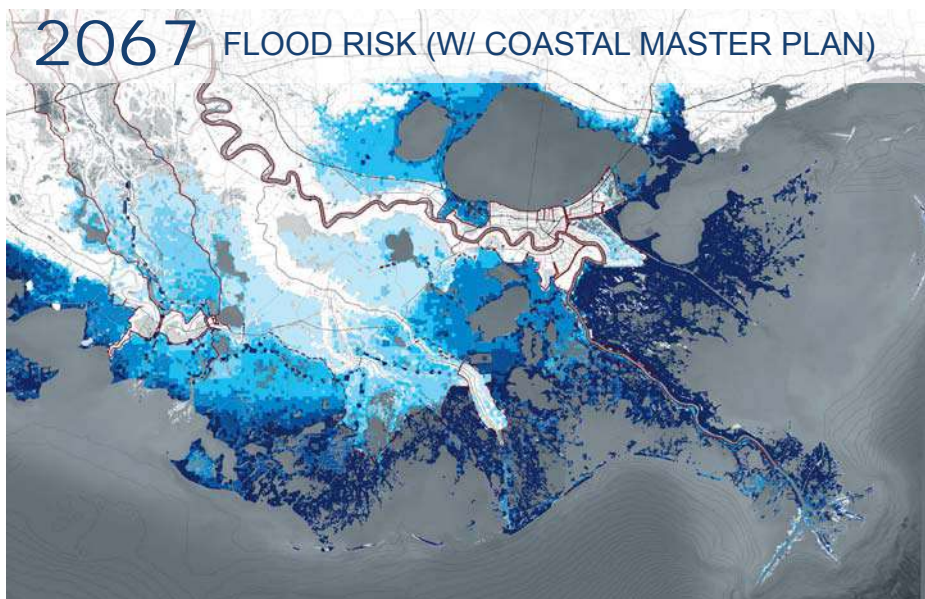
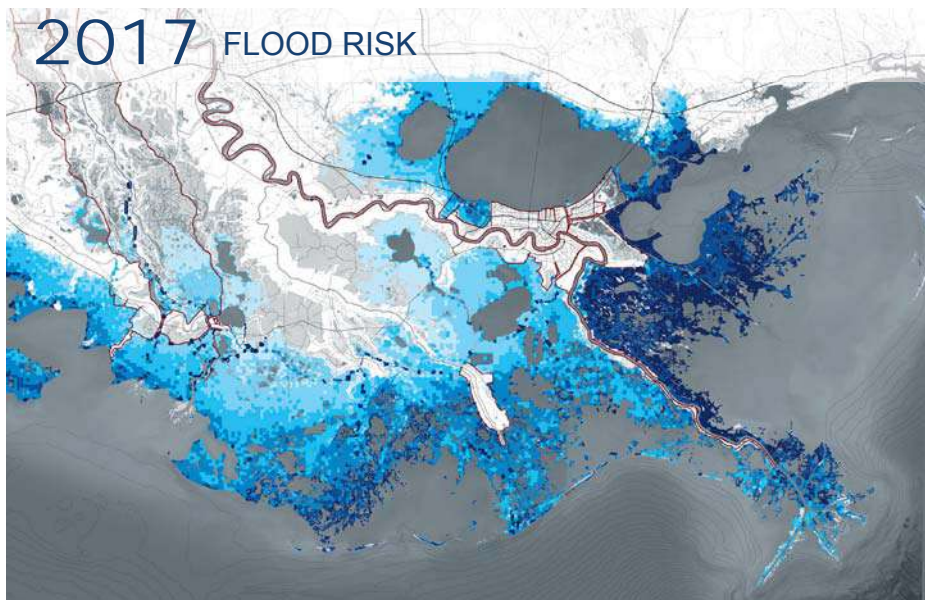


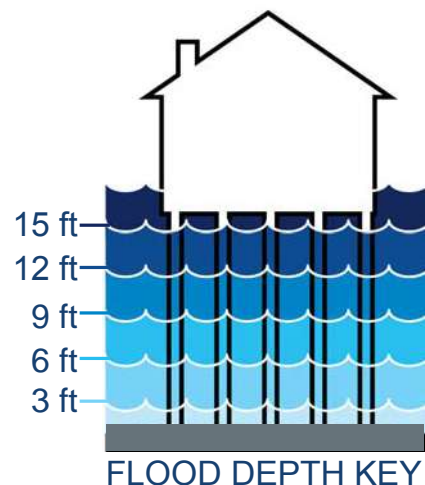
**In the next 50 years**, we will face increases in our flood risk. These maps represent flood depths during a major flood event. The dark blue shows land at risk of flood depths greater than 15 feet.



### **Working together toward a common set of solutions**

We invite you to be a part of this LA SAFE planning effort, and to tell us what is meaningful and valuable to you. Brainstorm with us as we figure out how our communities can adapt to the coming changes to our coast. To arrive at a solution that really works, we want to include everyone's voices in the planning process.

Please stay involved to help us come up with an adaptation plan. It is up to all of us to make our communities **stronger** and **safer**.



**SOURCE:** Coastal Protection and Restoration Authority (CPRA) 100 Year Flood Depths. These data were provided by CPRA and were originally produced to inform the development of the 2017 Coastal Master Plan.

STAY CONNECTED:



[LASAFE.LA.GOV](http://LASAFE.LA.GOV)



@LIVELASAFE

## PRINCIPLES OF THIS PROCESS



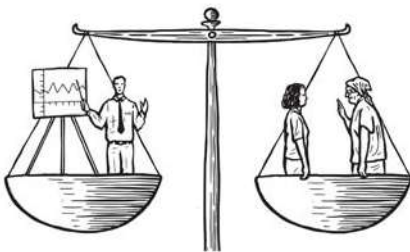
**SHARE POWER:** In a process that shares power, community members get to shape the goals, come up with solutions and help determine which should be implemented first. All participants get to roll up their sleeves and add ideas to the plans, as well as make decisions on what will happen.



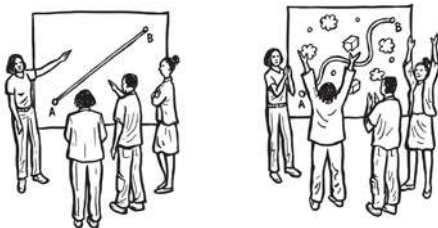
**PRIORITIZE RELATIONSHIPS:** To prioritize relationships means that we take care of one another and take time to actually get to know each other as people. It means that we do not treat people just as a source of survey data or as a means to an end. We value building relationships and trust with community members on the front lines of our coastal challenge.



**INCLUDE ALL POINTS OF VIEW:** This process will include all points of view, which means that we value the diversity in our communities—and that we need everyone's ideas to come up with the smartest solutions. To include all points of view, we have to bring all community members to the table—and we have to make sure that everyone feels respected and comfortable to share their particular points of view.



**USE ALL KINDS OF KNOWLEDGE:** To use all kinds of knowledge means that we give equal respect to different kinds of knowledge, whether it comes from technical training or formal education, or whether it comes from life experiences, emotional responses or instinct. When we use all kinds of knowledge, we open up so many more possibilities for brilliant ideas.



**TEST SOLUTIONS EARLY & OFTEN:** We want to test solutions early and often, which means that we share and talk through ideas for solutions before we develop them in detail. We want the community to come up with ideas, choose what is most important and help figure out how they will work. Because we are not leaping to any final solutions, we will have plenty of time to go back or change plans along the way.