



## ***LAFOURCHE PARISH MEETING 1 SUMMARY***



## ROUND 1 MEETINGS OVERVIEW

The first round of LA SAFE meetings kicked off the planning process. At these meetings, the project team presented data focused on land loss, flood risk, population movements, and economic change (see appendix). This information provided the groundwork for the community conversations. During these conversations, the participants discussed the goals and values that LA SAFE should pursue going forward.

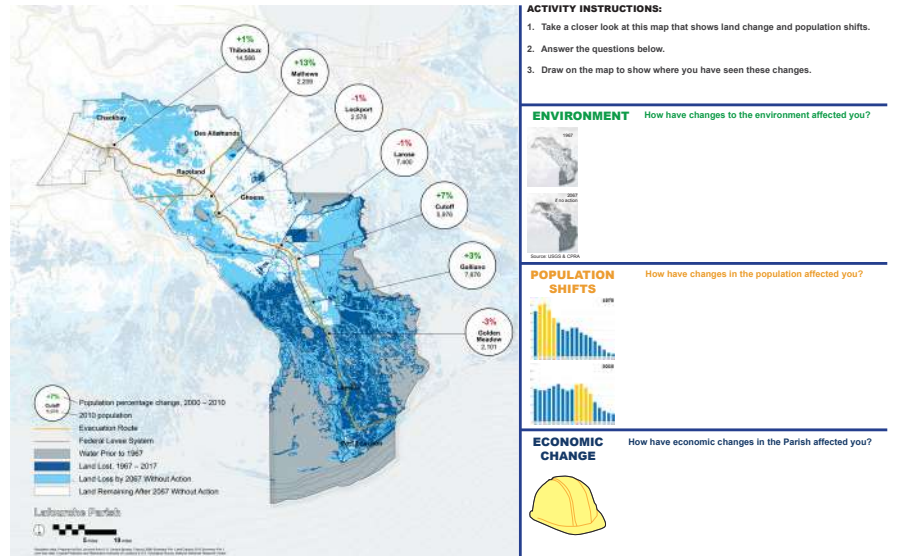
The majority of the meetings centered on two small-group activities, which focused on 3 general aspects of the project: Community & Culture, Environment & Sustainability, and Economy & Jobs. The first activity asked residents to describe the changes and challenges that they have seen over the last 50 years in their communities. This activity included a map that depicted current and future land loss and population shifts between 2000 and 2010.

The second activity asked what aspects of those three categories are important to protect and preserve, and how they can be strengthened, improved, or expanded. The project team organized the feedback from this meeting into 3 categories: Strengths, Opportunities, and Challenges.

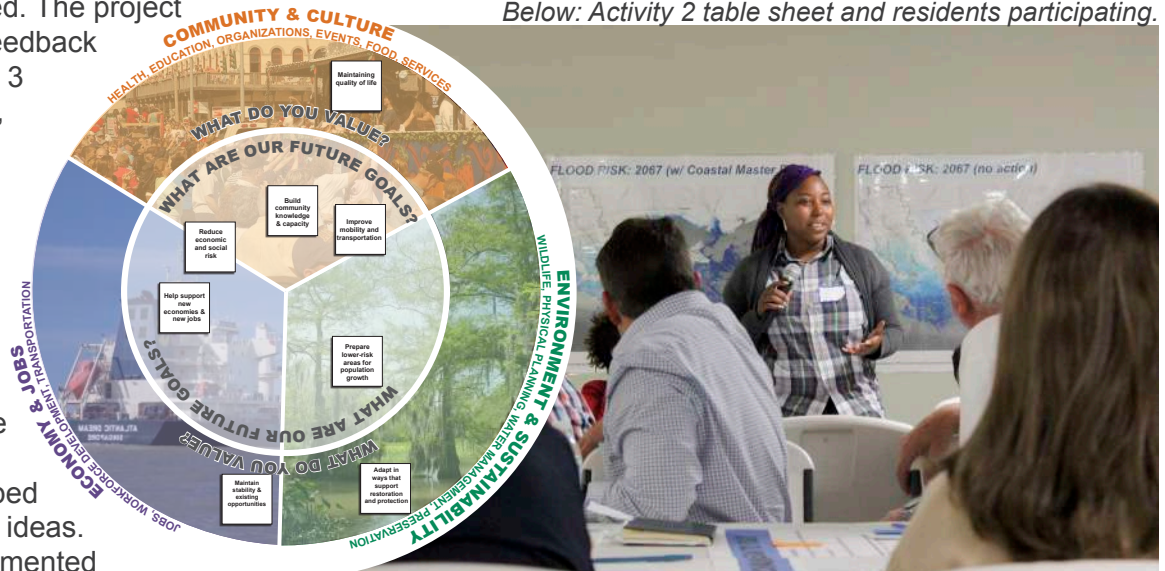
At the meeting, the residents sat at round tables. Each table group had a table host and a table scribe. The table host facilitated the conversation and helped capture the residents' ideas. The table scribe documented the conversation.



## WHAT DOES CHANGE MEAN TO YOU?



Activity 1 table sheet. See appendix for larger image.  
Below: Activity 2 table sheet and residents participating.





## MEETING RESULTS

The following pages illustrate the full meeting results. The graphic on the right depicts all of the ideas grouped by similarity. The project team designed the groupings using an emergent thematic coding technique. The team grouped similar ideas into sub-groups, and then arranged the sub-groups into major categories.

The size of the circles in the graphic reflects the frequency of comments within that topic. The larger circles show the most commonly discussed topics, while the smaller circles show topics discussed less often.

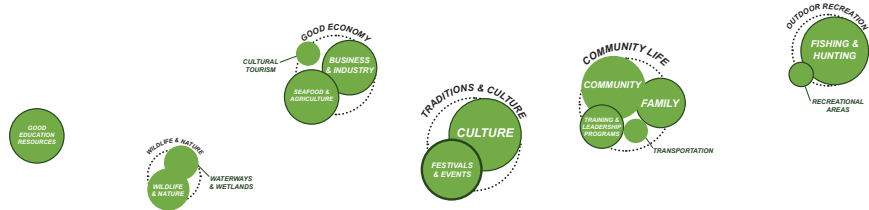
# LAFOURCHE PARISH

## Meeting 1 Ideas

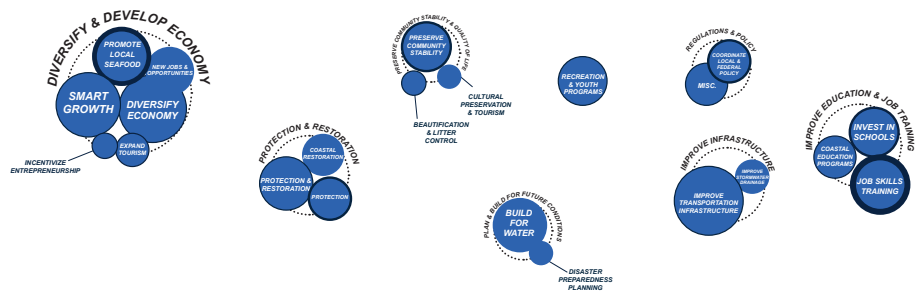
### CHALLENGES



### STRENGTHS

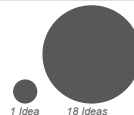


### OPPORTUNITIES



#### KEY

These circles represent ideas collected at Community Meeting 1.



The size of the circles indicate how many people said similar things ideas.

We grouped ideas into "Subcategories" and "Major Categories" for groups of ideas are related but not the same.



Participants placed stickers on ideas that they chose to prioritize. The number of those prioritizations are shown here as line width around the circles.



# STRENGTHS

The project team transcribed all of the comments below directly from the table sheet activities at Meeting 1. Comments in bold represent the ideas that community members prioritized using sticker dots during the activity. The sizes of the subcategory circles correspond to the number of ideas within the suggestion. The subcategories are then organized under major categories, separated by dotted lines. See the key on page 18 for more information.

## COMMUNITY LIFE .....

### COMMUNITY

- Close to water and work, Close to family, close to fresh seafood
- The community minded people who genuinely care for each other.
- Sense of community.
- Compassion and kindness.
- Togetherness and unity.
- Sense of community population and culture.
- I like our community organizations that operate own parks and civic centers.

### FAMILY

- Choose to stay there because I grew up there.
- Family Days.
- Food/ Family always.
- **Everyone is willing to help each other out. Family, environment.**

### TRAINING & LEADERSHIP PROGRAMS

- **How the parish has come together to retrain people who have lost their jobs.**
- Our Leadership Lafourche program continue.
- They provide critical quality of life programs.

### TRANSPORTATION

- Good public transportation

## GOOD ECONOMY.....

### BUSINESS & INDUSTRY

- Maintain bayou as working corridor.
- **Continued oil and gas interests.**
- We have a great location for economic prosperity. Mississippi river.
- Port Fourchon shipbuilding and tech.
- Built out

### CULTURAL TOURISM

- Tourism French People

### SEAFOOD & AGRICULTURE

- Fishing industry
- **Economic diversity, fishing, ship-building, shrimping, oil industry, farming.**
- Seafood industry
- Retain fishing industry (Shrimping and fish) Maintaining loyal position in gulf (for Fourchon)

# STRENGTHS

## GOOD EDUCATION RESOURCES.....

### GOOD EDUCATION RESOURCES

- Magnolia trees wellness center teaches health, water aerobics.
- Nicholls Thibodaux regional. Nicholls state university.
- **I like to think the school system has invented in a technical school system.**
- Quality higher education.

## OUTDOOR RECREATION.....

### FISHING & HUNTING

- Fishing.
- Dinner and for fun. Loved wild-flowers on the bayou side.
- Being the sportsman's paradise, there is no place like this region in the country.
- Hunting, fishing, seafood camping.
- Love the accessibility of fresh seafoods.
- Love recreation fishing here and that they can take their family and friends here.
- Keep fishing.
- **Hunting and Fishing**

### RECREATIONAL AREAS

- **Things that are valuable are: Living with the environment and great abundance of recreational areas.**

## TRADITIONS AND CULTURE.....

### CULTURE

- Things that are valuable are less transient in society.
- This is the culture that they're accustomed to.
- **Family culture in south Lafourche area.**
- The food culture here is good. Its fresh.
- People, I like the culture awareness programs that some of schools participate and plan for our kids.

- Culture is tied to the natural resources like no other place in American food, architecture.
- Identity of place "drinking bayou h2O"
- Culture/ heritage (southern hospitality)
- Cajun culture food, family, god.

### FESTIVALS & EVENTS

- **I like from the community perspective, own festivals are wonderful.**
- **Food-Local family lite festivals**
- Festivals and fairs.
- Happy events- fairs throughout parish

- Festivals Cajun dancing culture
- Thibodauxville fair in November (gumbo, jambalaya) Fireman's fair and every may for community churches.

STRENGTHS

WILDLIFE AND NATURE.....



- Beauty of the area because of cypress trees and birding.
- Live oak tour.
- Whole estuary gradient= All the habitat types, fisheries, swamp, marsh, beach.



WATERWAYS AND WETLANDS

- Protect our bayou.
- Availability of fresh water.

# OPPORTUNITIES

## DIVERSIFY & DEVELOP ECONOMY.....

### DIVERSIFY ECONOMY

- Diversify environmental economy.
- Build diversity in the workforce- i.e. paper mill in Valentine open.
- We need to diversify industries that would create more job opportunities.
- The most important thing to protect is the economic diversity of South LA.
- Coastal restoration to protect infrastructure which also drives growth in water sector.
- Attract more industries associated with technology.
- Internet/ electric/ groceries- everything is monopolized
- **Explore and develop green energy (wind farms).**

### SMART GROWTH

- Hasn't flooded too badly in Thibodeaux.
- Population increase in central LaFourche and increase in north Lafourche.
- Revitalize downtown Thibodaux
- Maintain farm land, pursue main goal.
- Develop areas maintain farm land.
- Smart business economic development and support. **Expand jobs.**
- Need economy, environment, and infrastructure

### PROMOTE LOCAL SEAFOOD

- **Create more commercial docking.**
- **Advertisement for LA seafood,**
- **Invest more in the seafood business in Louisiana/ less imports from other countries- create more job security/ livelihood for locals.**
- I love seafood and the ability to go fresh or salt water fishing.
- **Protection of seafood industries.**

### NEW JOBS & OPPORTUNITIES

- Seafood industry, jobs to attract young people, more engaged leadership.
- Maintain and expand job opportunities 70374
- Create more job security/ livelihood for locals.
- Opportunities for our economy to support national emergency security through supporting oil/ gas development in the gulf of Mexico.

### EXPAND TOURISM

- **New industries manufacturing increase tourism aquaculture.**
- Fish farming aquaculture increase tourism, vo tech. Railroad. Elevate CA1port--> US90. Para-transit/public.

### INCENTIVIZE ENTREPRENEURSHIP

- **Tax breaks for business owners.**

## REGULATIONS & POLICY.....

### COORDINATE LOCAL & FEDERAL POLICY

- **A sustainable flood insurance program.**
- **The levees are recognized**
- **Federal recognition of this process to achieve the plan.**

### MISC.

- Usage of resources.
- Recycle and reuse investments.
- Retain popularity in region QOC.

# OPPORTUNITIES

## IMPROVE EDUCATION & JOB TRAINING.....

### JOB SKILLS TRAINING

- Education. More outreach. Involving industry in education.
- **Support across the workforce for job training and skill set building even in industries experiencing downturn.**
- **Train the non-professional workers skills about managing and finances.**
- **Workforce development through community, college involvement and funding.**
- **Workforce funding.**

### COASTAL EDUCATION PROGRAMS

- Goal how to help people understand levee system education.
- **Better Education for our kids in our situation so they can make good decisions in the future.**
- Teach flood survival skills to families who have no choice but to stay

### INVEST IN SCHOOLS

- **Investing in public schools improvement to Raceland upper.**
- Support our college!
- **Education of the Parish young and old.**
- SLHS is now a 4a high school

## IMPROVE INFRASTRUCTURE.....

### IMPROVE TRANSPORTATION INFRASTRUCTURE

- Infrastructure, road and bridges
- Transportation evenings and weekends.
- Better transportation and highways.
- Transportations oils complete elevated highway to port Fourchon.
- **Bayou Lafourche transportation.**
- Better infrastructure (transportation) and safer!!
- Highest ranked thing in Lafourche 20 yr. plan was public transportation system.
- Get transportation throughout parish.

### IMPROVE STORMWATER DRAINAGE

- Sewer and (open) drainage system needs to be set in place.
- Better streets, better drainage convertible pipes.

## PLAN & BUILD FOR FUTURE CONDITIONS.....

### BUILD FOR WATER

- Lifted housing is the goal.
- Homes have to be elevated.
- Assist with home elevation.
- Using gravel and rocks to build land up so we can be on higher ground.
- Elevated homes

### DISASTER PREPAREDNESS PLANNING

- Where would I go if my house goes down.



# OPPORTUNITIES

## PRESERVE COMMUNITY STABILITY & Q.O.L.....



- **Give our kids hope that our government is here to help preserve these things that are important to our way of life.**
- Increase in quality of life.
- **Get Lafourche to realize it is its one parish. As goes one area, so goes the whole parish.**
- Oil and gas should be required to put more investments into environment, education, communities and culture.



- French culture reinvigorated.



- **Clean and recycle.**

## PROTECTION & RESTORATION.....



- Stop salt water intrusion.
- Hold the powers at hand accountable for the work they do to preserve and restore this region.
- **Rock off the coast. Sediment in the marsh to protect and build marsh land.**
- Fresh water diversion is a major factor to most discussions but not what is really wanted.
- Want to see the master plan projects along lower bayou Lafourche ridge.



- Fresh water protection.
- Bayou Lafourche project completions.
- Rocks are needed vs. sand



- **We need to complete the Morquiza Levee system on the east side of bayou Lafourche, to give central and north Lafourche comprehensive flood protection**
- **Make sure my family is safe.**
- Needs to invest in better flood gates.

## RECREATION & YOUTH PROGRAMS.....



- **Invest to recreation fishing in Louisiana charter boats, advertising on a national level.**
- Make wellness center more affordable for all. A youth center
- Recreation and transportation.
- Regional bike trails, water trails.

# CHALLENGES

## POPULATION LOSS/MOVEMENT.....



- Population shift has migrated to the northern part of the parish. Shifting home property values.
- Used to go down to golden meadows and family lived in LaRose, Mostly moving northward, Everyone is leaving grand isle
- Loss of family ties due to population shift.
- Economy has affected population shifts more than anything.
- Population is moving to higher ground.
- More people moving in neighborhoods
- Increase 70301. Decrease down by the bayou.
- Population shifting north- Development driving flood concerns
- People I used to know is not there anymore, Family members had to leave
- 10th ward population increased, Experiencing growth,
- Population Decrease in South Lafourche, Old population dying
- Shift from south Lafourche to north Lafourche. Shift to above the intercoastal for hurricane protections
- Shifts in population strain resources in area of population growth

### YOUTH RETENTION

- Kids moving away because they feel this is a losing proposition.
- Young adults are moving. Quite a few retired persons moving.

### LOST HOMES

- Family members lost home

### STUDENT LOSS

- 2002 was the turning point losing students

## FLOODING.....

### TIDAL FLOODING

- Bayou is getting wider and not as narrow as it used to be,
- Areas that became tidal that were not historically tidal.
- Tidal issues.
- When its not raining it floods.

### STREET FLOODING & POOR DRAINAGE

- Flooding In the streets, Due to flooding friends had to move,
- Flooding issues . Tides drainage,
- Bayou is shifting. Drainage, flooding. Erosion, marsh, tidal

## CONTINUED SUBSIDENCE & HOME DAMAGE.....

### SUBSIDENCE DAMAGE

- Schools, Slab sinking
- Coastal roads move often. Require upgrades to infrastructure.
- Land sinking and having to spend more money to make repairs

# CHALLENGES

## DECLINING HOME VALUES & TAX BASE.....



- Financing and flood insurance. Flood insurance rates
- **There is so much land but because it is a flood zone insurances are high.**
- Flood insurance increase,
- Flood insurance/worried about flooding,
- Flood insurance rates are going up.
- Permits, cost of living here. Insurance



- Bayou Lafourche drinking water.



- Real estate market is out of whack.



- Less people equals less business, no tax base

**DECLINING  
HOME  
VALUES &  
DEVELOPMENT**

## LOSS OF BUSINESS & INDUSTRY.....



- Threat for business.
- Oil and gas industry
- Less jobs in town Thibodaux, housing more expensive.
- Companies are choosing to leave
- Oyster factory and shrimp factory shut down a lot of industries
- Has to travel to Thibodaux to shop.

## CONTINUED LAND LOSS & DYING ECOSYSTEMS.....



- Main change-- seabirds in town Leeville .
- Roads and roadways have changed, vegetation increase, oranges are no longer growing in grand isle, hot water, rain, water on street but pumps are removing h2o, height of h2o in bayou has increased, salt h2o intrusion
- Flatter land and high levees are no longer there
- Disappearing land and roads collapse
- Salt water
- Changes in area where people fish



- Salt Water intrusion. Observed subsidence and erosion of marsh.

## APPENDIX

The appendix follows this page. It includes maps and graphs shown during the first Lafourche Parish LA SAFE meeting. The appendix illustrates land loss, flood risk, population shifts, and economic activity in the parish. Larger examples of the table sheets used at the meeting follow the maps and graphs.



---

### STAY CONNECTED!

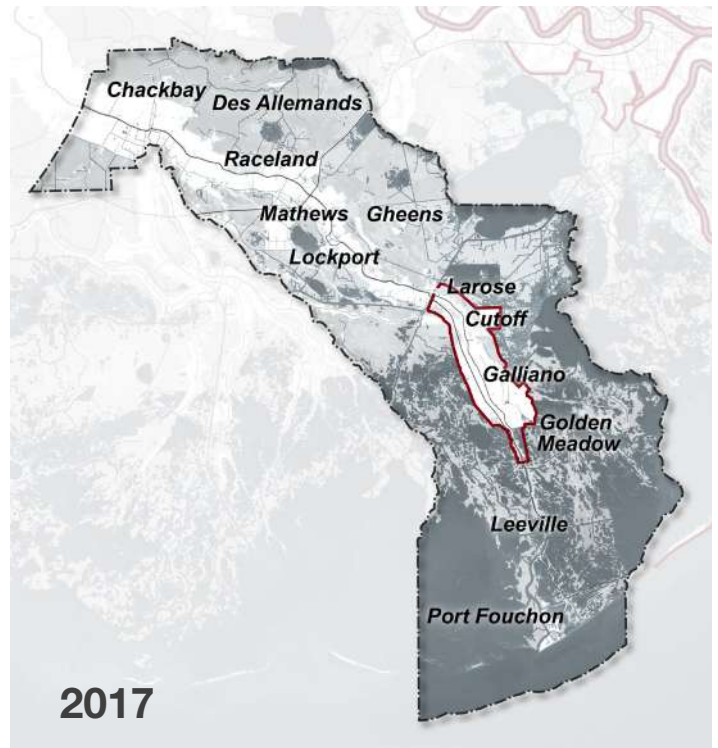
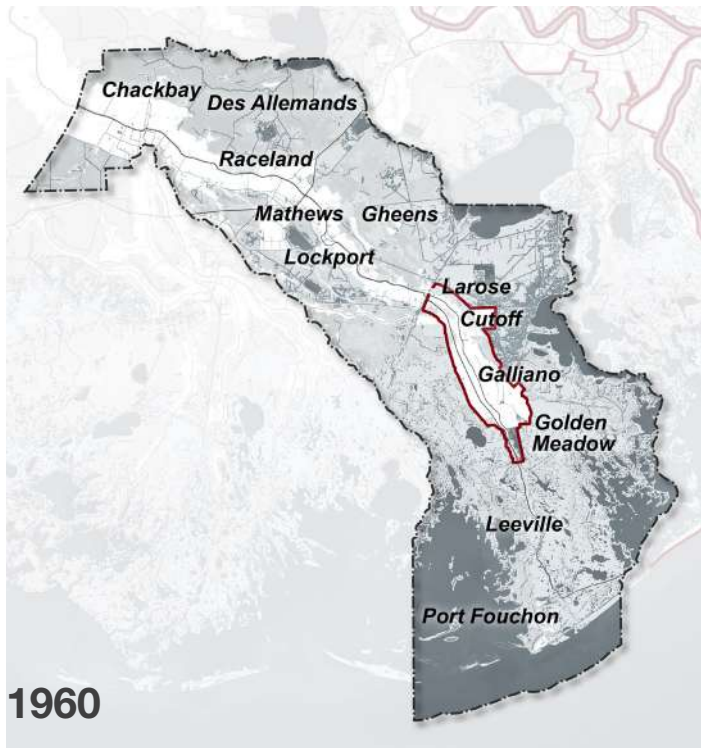
**Website:** [lasafe.la.gov](http://lasafe.la.gov)  
**Facebook:** [facebook.com/livelasafe](https://www.facebook.com/livelasafe)  
**Twitter:** @livelasafe  
**Instagram:** @livelasafe  
**Email:** [info@livelasafe.org](mailto:info@livelasafe.org)

### GET IN TOUCH!

***LA SAFE point of contact:***  
**Lafourche Parish**  
Nic Matherne  
[nicholas.matherne@aptim.com](mailto:nicholas.matherne@aptim.com)  
985.856.4170



## LAND LOSS OVER TIME

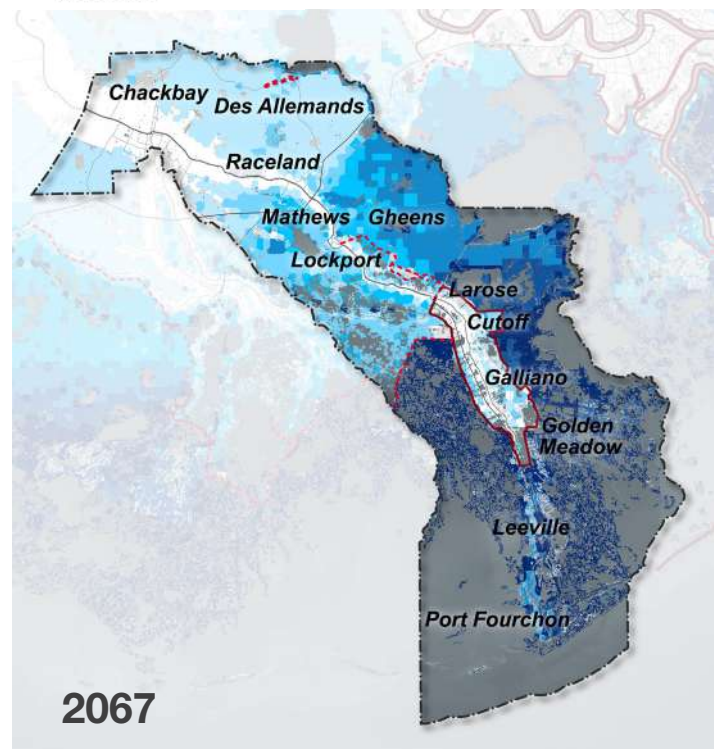
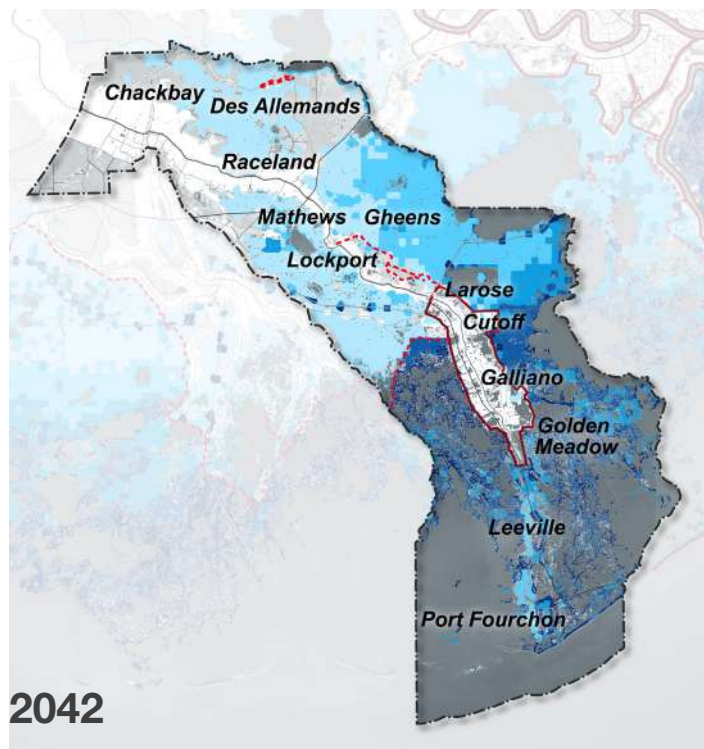
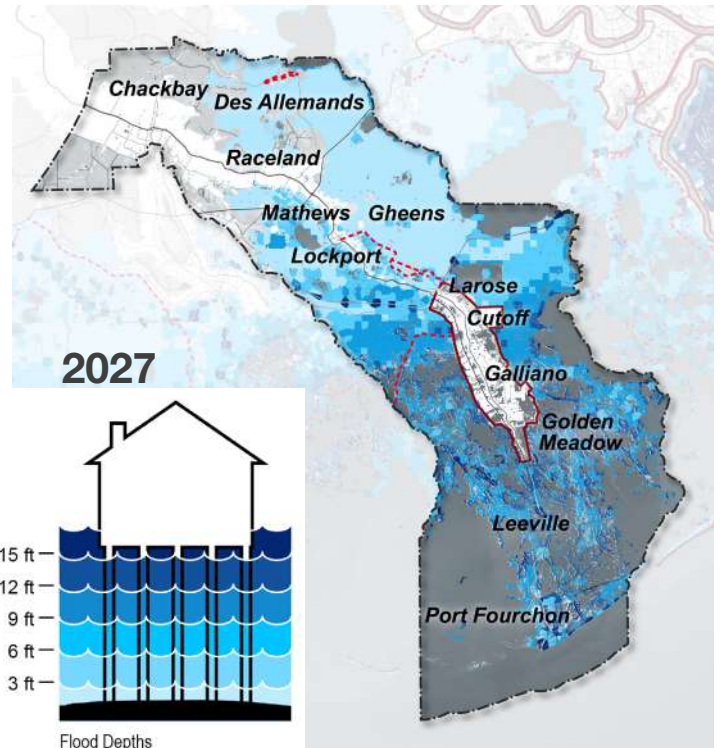
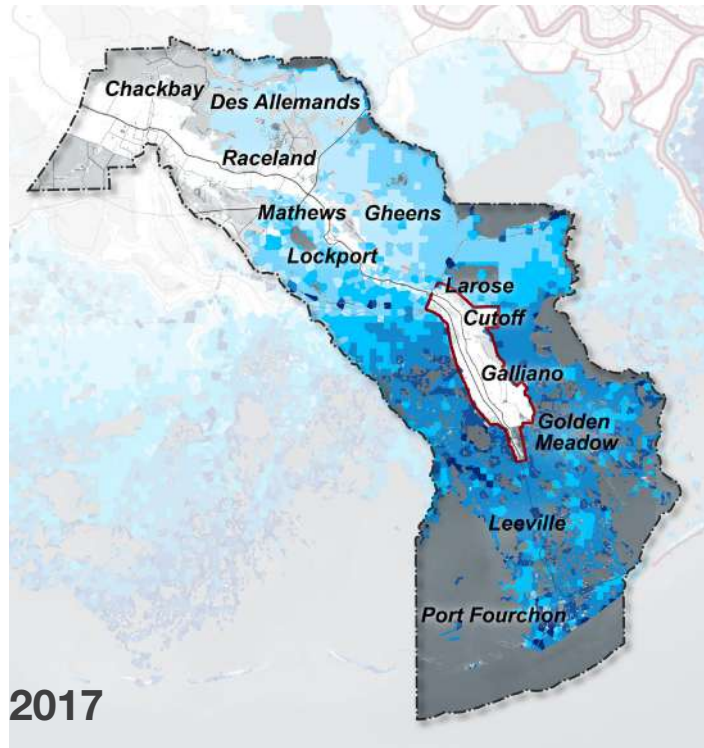


This data was provided by CPRA and were originally produced to inform the development of the 2017 Coastal Master Plan.



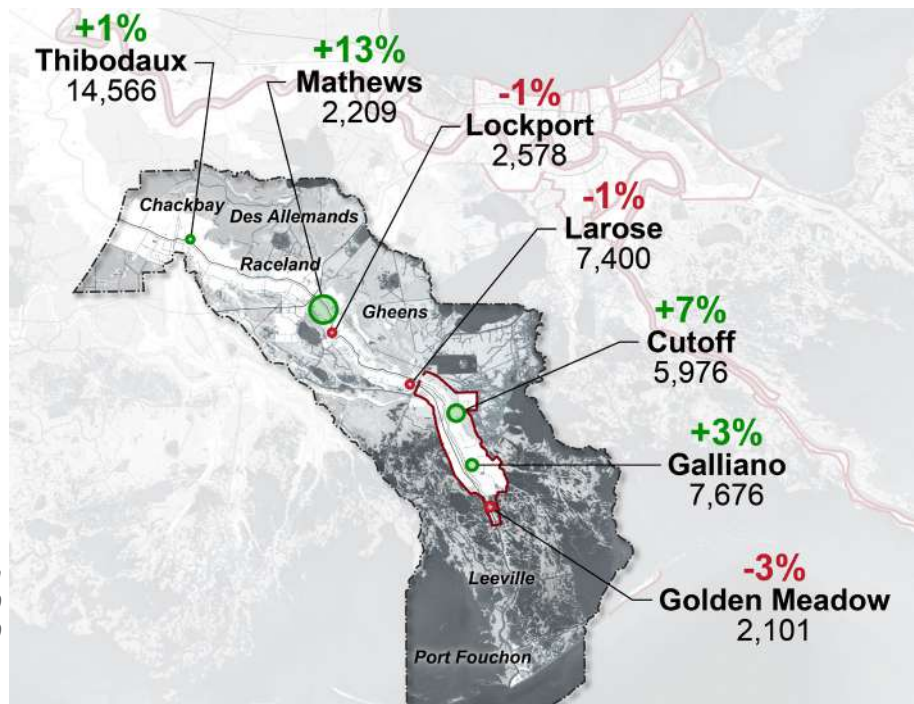
# FLOOD RISK

All shown with Coastal Master Plan



This data was provided by CPRA and were originally produced to inform the development of the 2017 Coastal Master Plan.

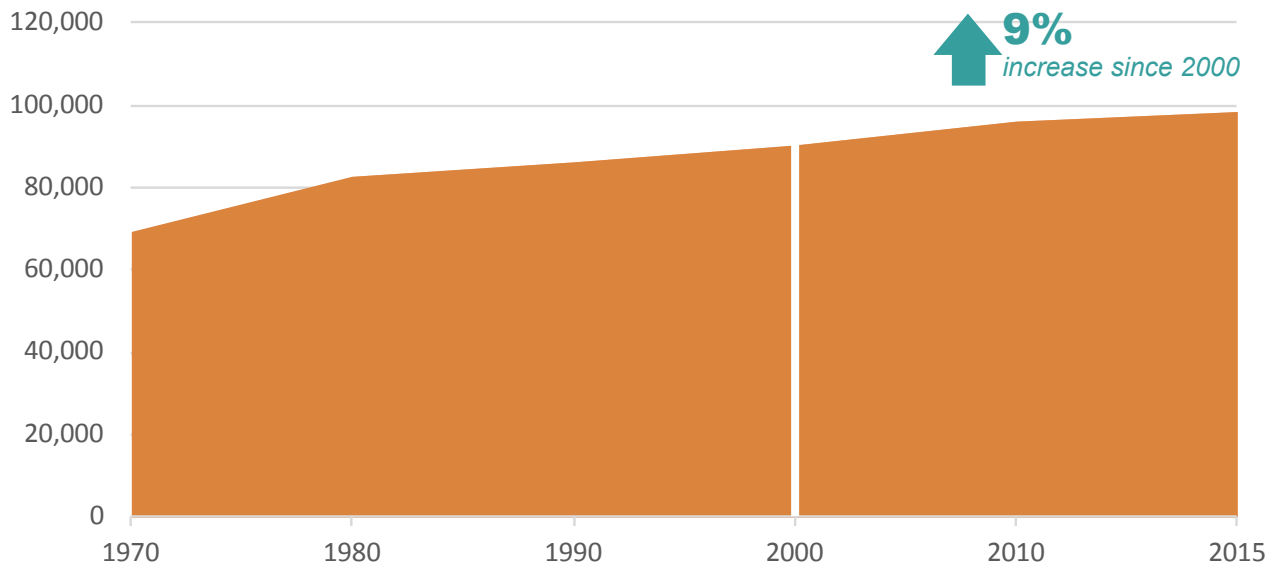
## POPULATION CHANGES IN LAFORCHE COMMUNITIES 2000-2010



Data prepared by ESRI, sourced from  
U.S. Census Bureau, Census 2000  
Summary File 1 and Census 2010  
Summary File 1.

## POPULATION CHANGE SINCE 1970

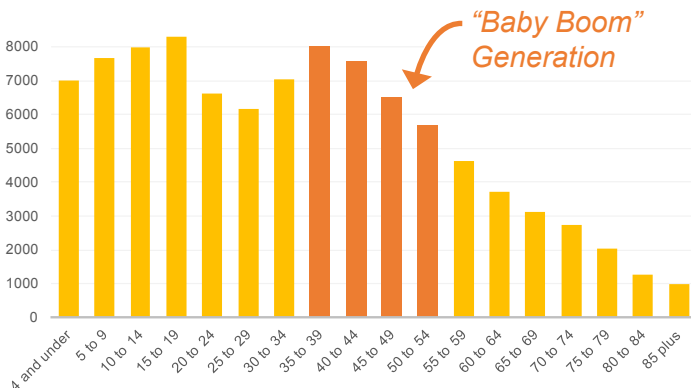
Source: The Data Center analysis of U.S. Census Bureau Decennial Census and Population Estimates 2015.



## POPULATION BY AGE, 2000 - 2015

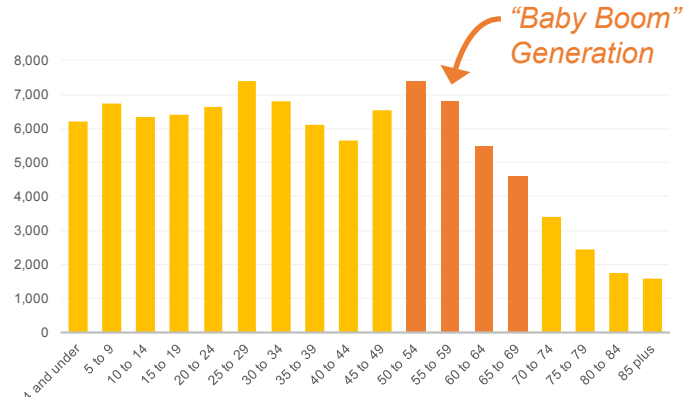
YEAR 2000

POPULATION: 89,974



YEAR 2015

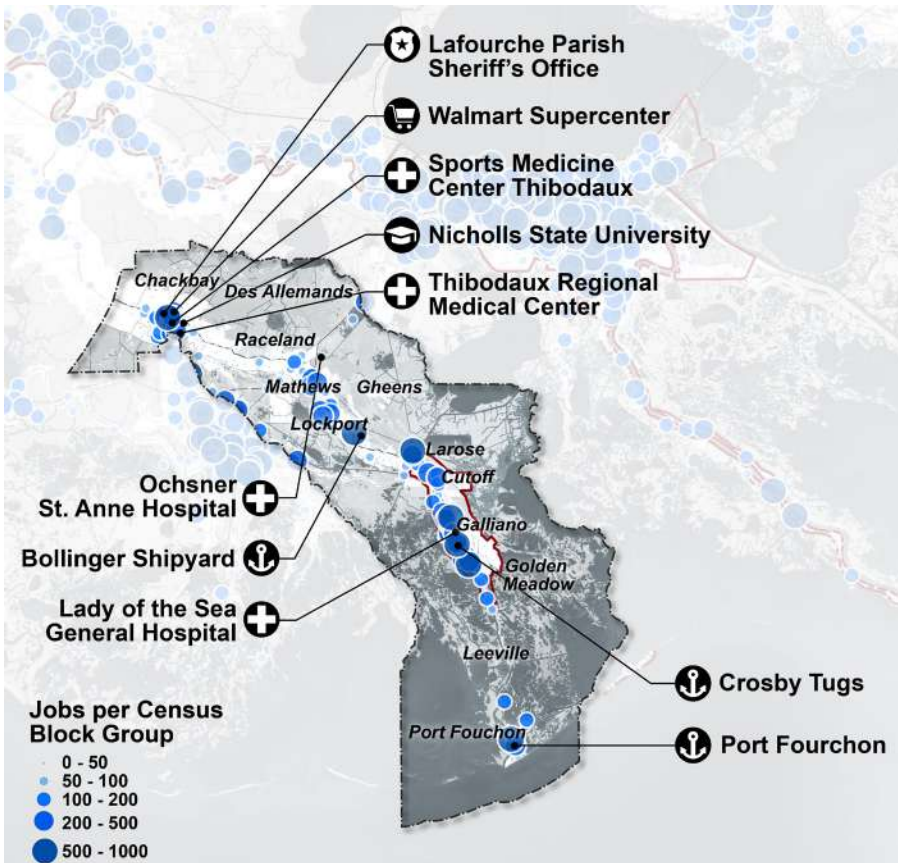
POPULATION: 98,325



Source: The Data Center analysis of U.S. Census Bureau data from the decennial census.



## MAJOR EMPLOYMENT CENTERS

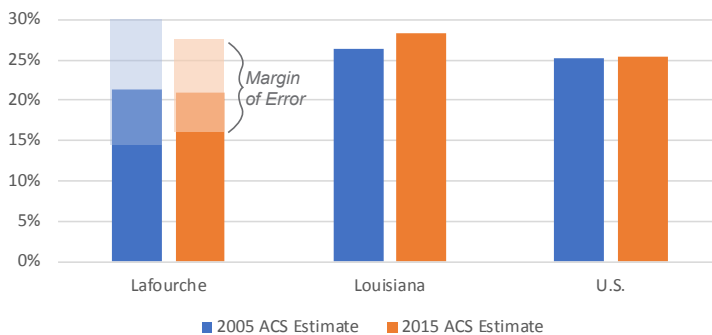


Source: US Census, Infogroup  
published under USDOL Guidance

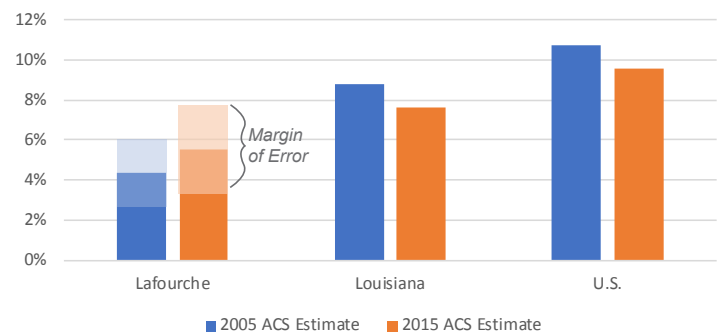
## HOUSING TRENDS IN LAFOURCHE PARISH

Source: The Data Center Analysis of U.S. Census Data; Notes: Estimates of % Owner Occupied Housing for Plaquemines and St. John the Baptist are from 2015 ACS Supplemental Estimates. Estimates from a range of years (2006-2010 or 2011-2015) represent an average across the listed years.

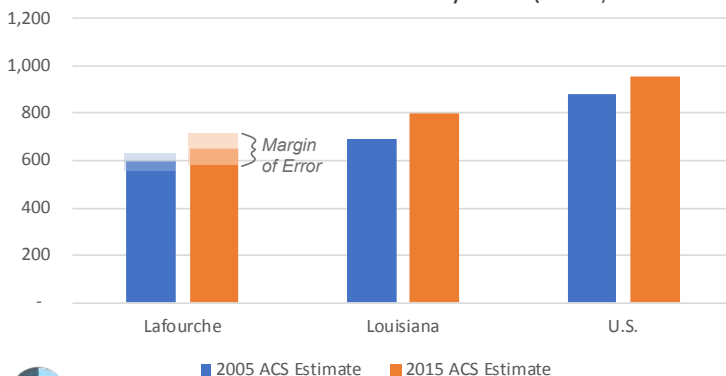
Renters with severe cost burden  
(50%+ of income on housing)



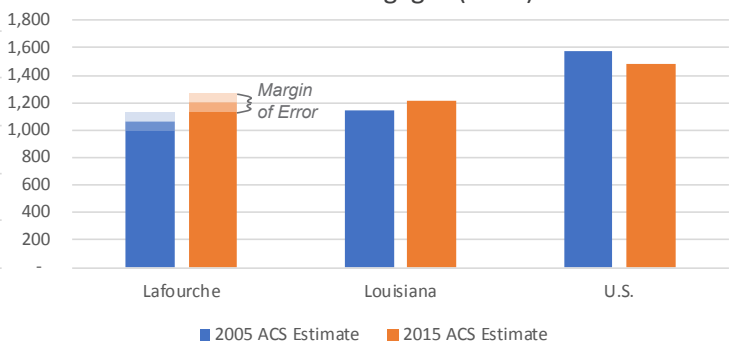
Homeowners with severe cost burden  
(>50% of income on housing)



Median Gross Monthly Rent (2015)



Median Monthly Housing costs for Homeowners with Mortgages (2015)



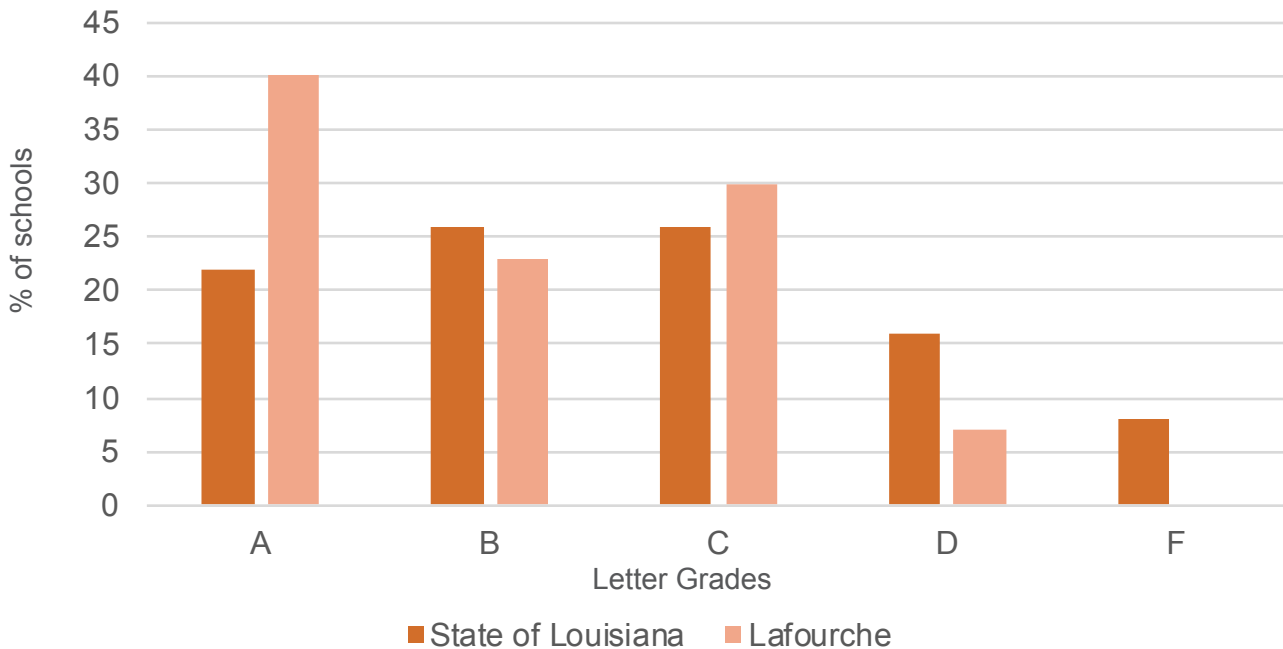
Source: The Data Center analysis of U.S. Census Bureau data from the decennial census.



## PARISH SCHOOL PERFORMANCE

### 2015-2016 District Report Card

Source: Concordia analysis of "2015-2016 School District Report Cards," Accessed April 2017, <http://www.louisianabelieves.com/data/reportcards/2016/>



## PARISH SCHOOL ENROLLMENT

Source: Data Center analysis of "Multiple Statistics By Site For Total Reported Students" Tables from the Louisiana Department of Education, Accessed April 2017, <http://www.louisianabelieves.com/resources/library/enrollment-counts>



# ACTIVITY 1 TABLE SHEET

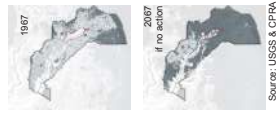
(originally 36"x48")

## WHAT DOES CHANGE MEAN TO YOU?

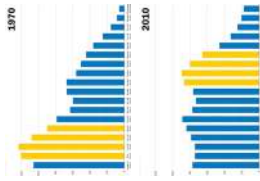
### ACTIVITY INSTRUCTIONS:

1. Take a closer look at this map that shows land change and population shifts.
2. Answer the questions below.
3. Draw on the map to show where you have seen these changes.

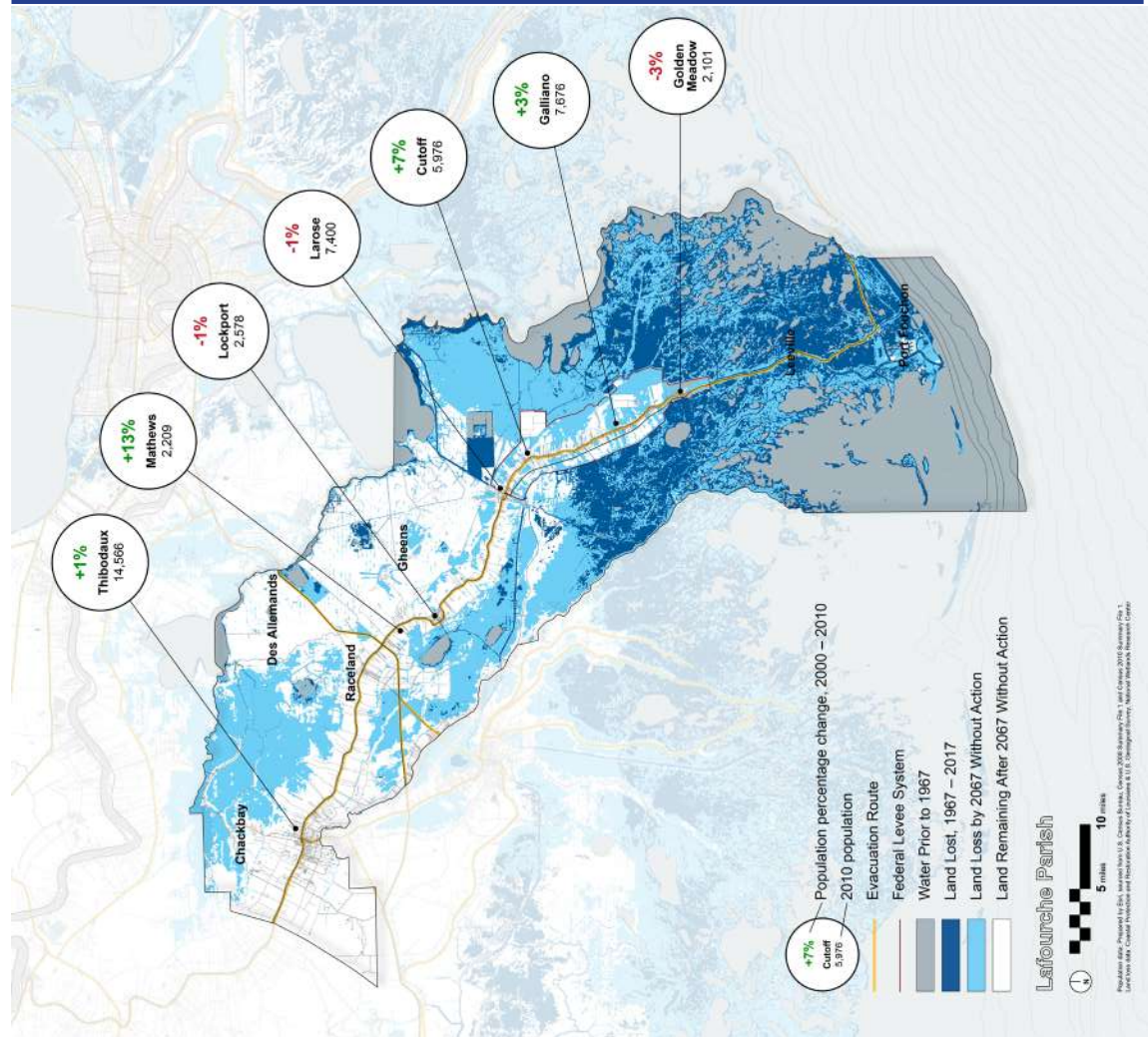
### ENVIRONMENT How have changes to the environment affected you?



### POPULATION SHIFTS How have changes in the population affected you?



### ECONOMIC CHANGE How have economic changes in the Parish affected you?



**ACTIVITY 2 TABLE SHEET**

(originally 36"x48")

# ADAPTATION GOALS

*Tell us what adaptation goals are most important to you.*

The outer circle is for you to list what you value in the Parish.

The inner circle is for you to list what you think future goals should be.

1. Write your ideas on Post-it notes and place them on the sheet. Include your zip code on your ideas.

2. As a group, choose your top 10 favorite ideas, and place stickers on them.

