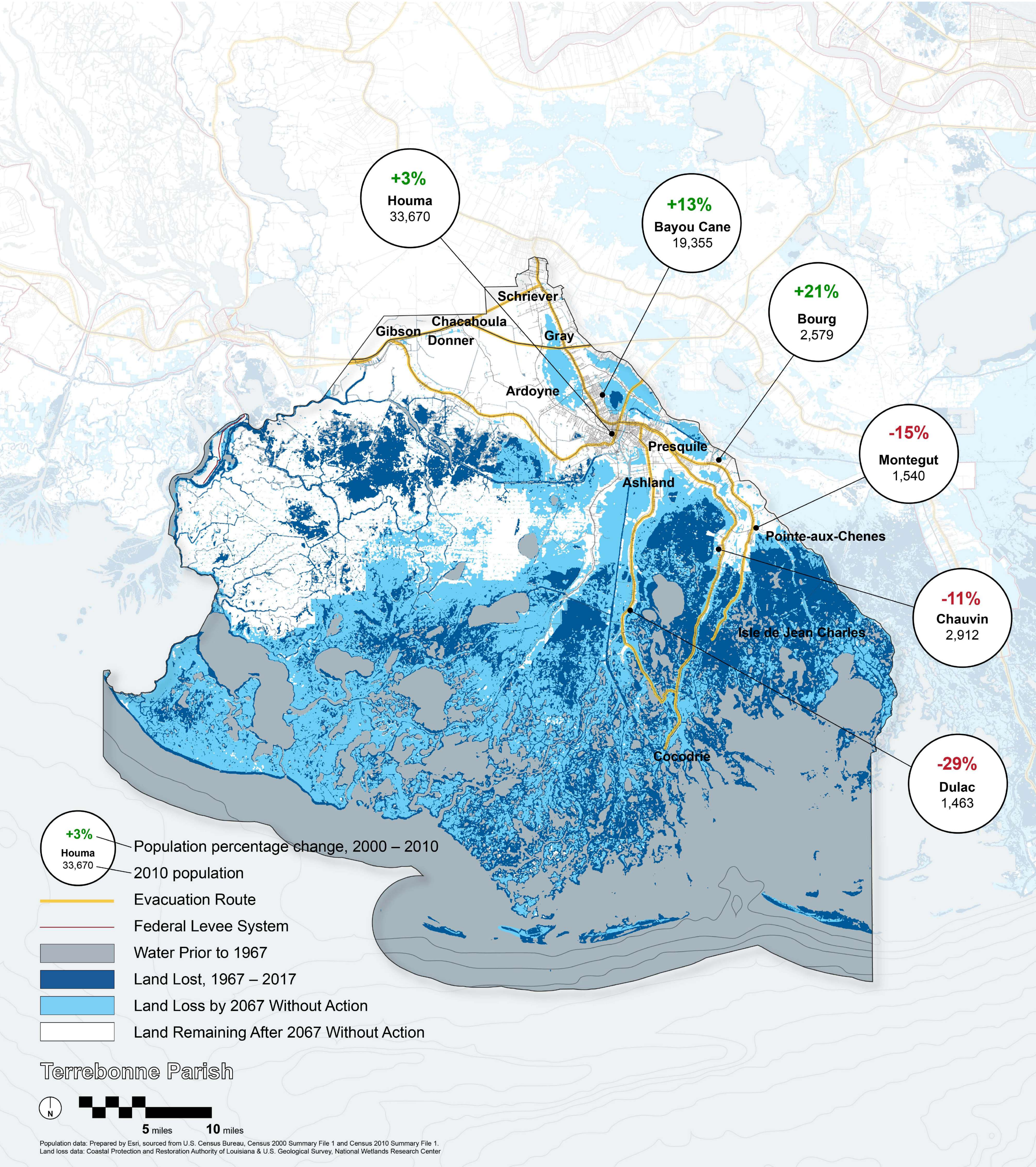


# WHAT DOES CHANGE MEAN TO YOU?

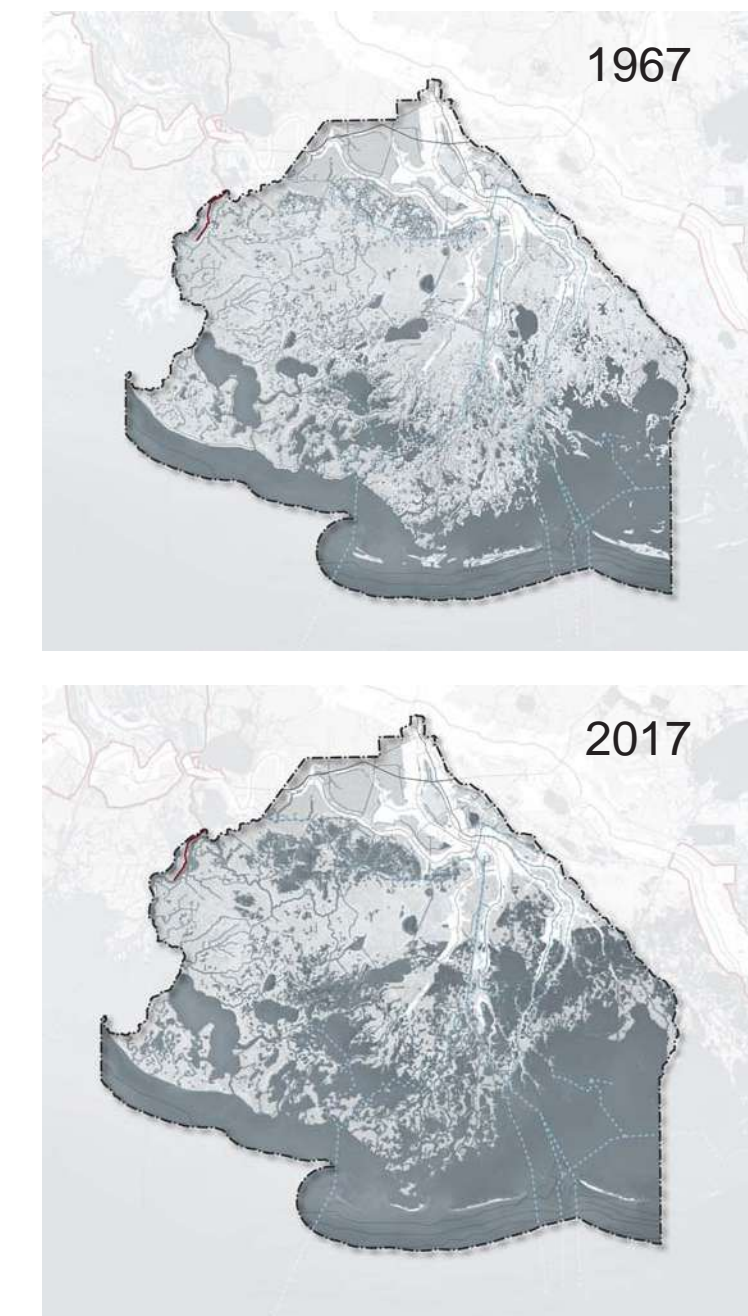


## ACTIVITY INSTRUCTIONS:

1. Take a closer look at this map that shows land change and population shifts.
2. Answer the questions below.
3. Draw on the map to show where you have seen these changes.

## ENVIRONMENT

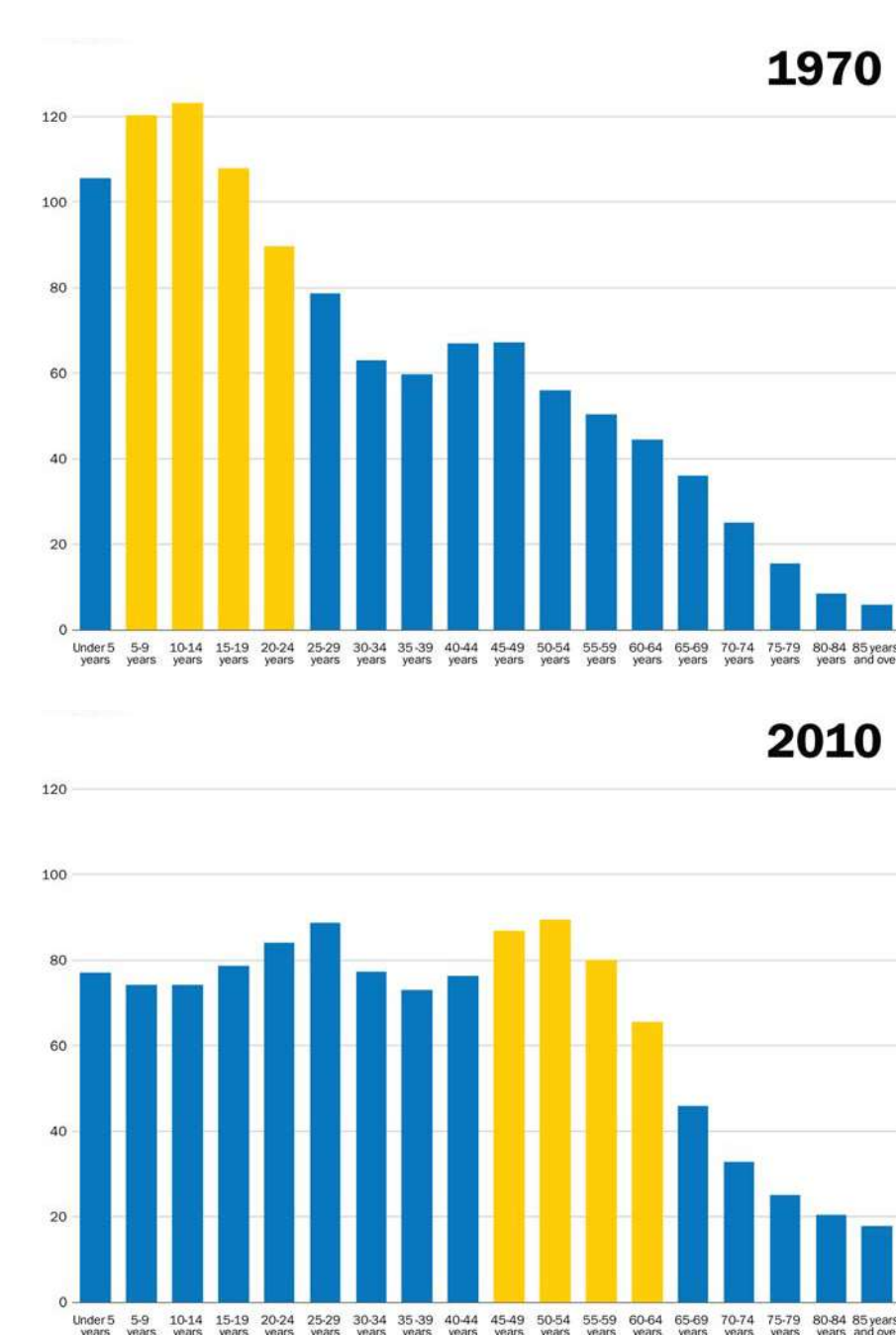
How have changes to the environment affected you?



Source: USGS & CPRA

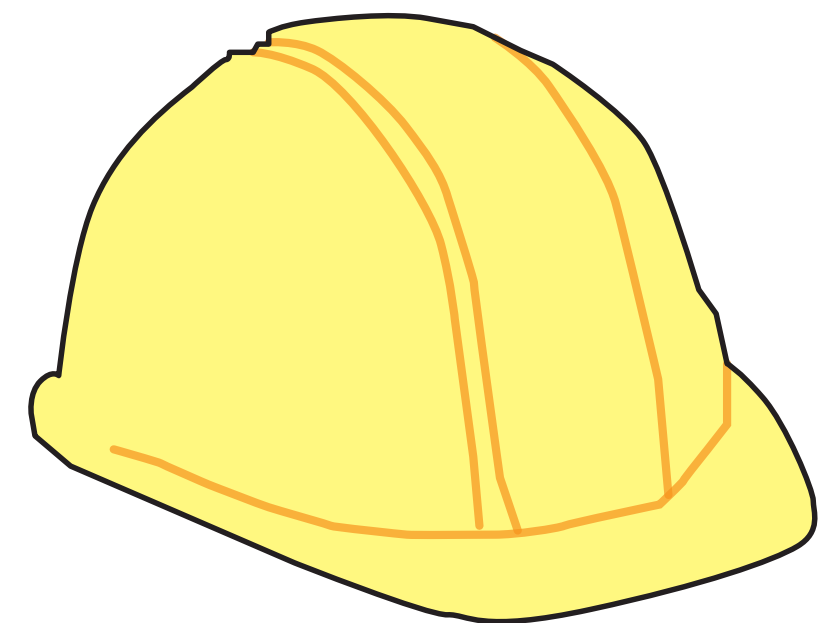
## POPULATION SHIFTS

How have changes in the population affected you?



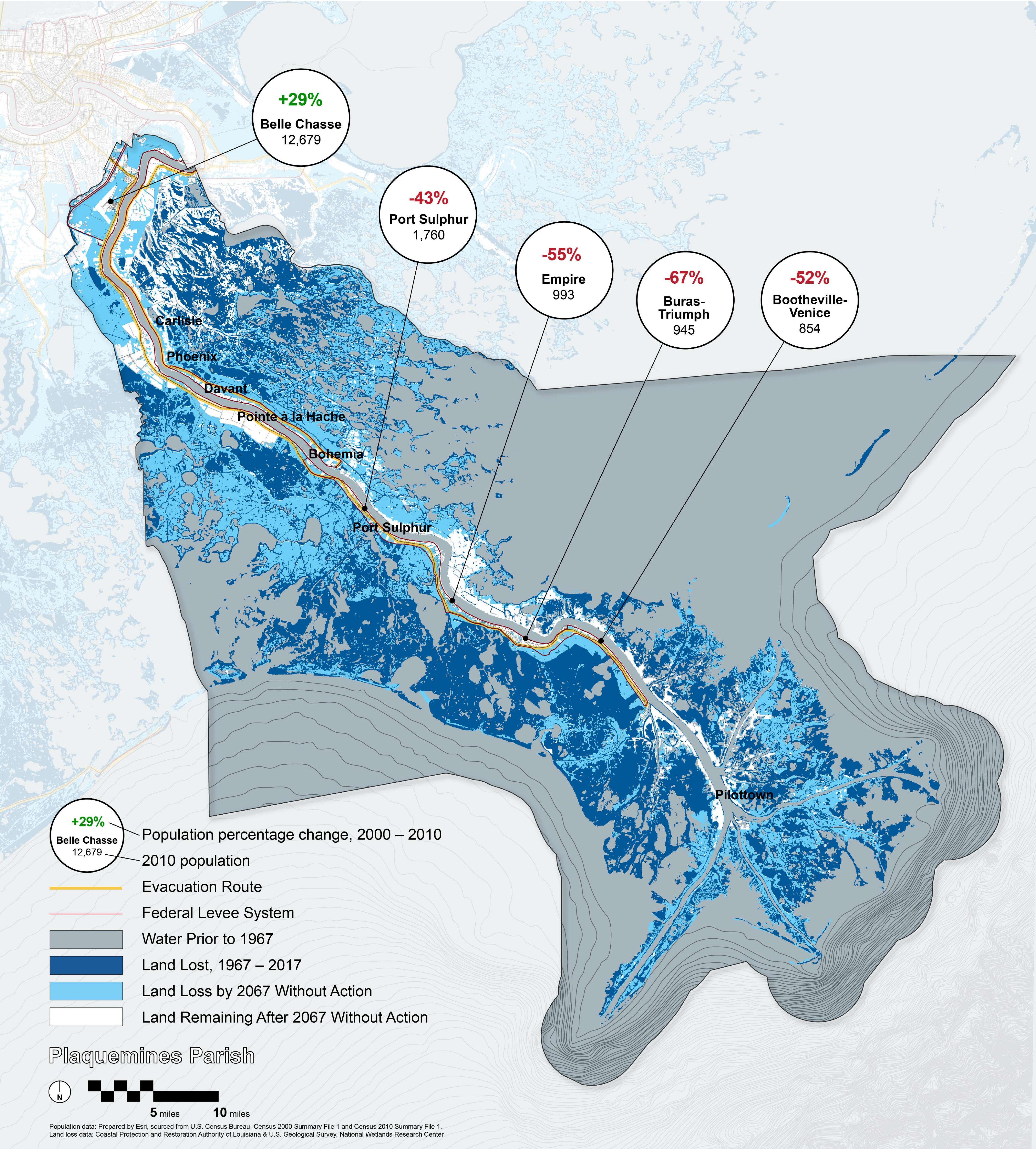
## ECONOMIC CHANGE

How have economic changes in the Parish affected you?





# WHAT DOES CHANGE MEAN TO YOU?

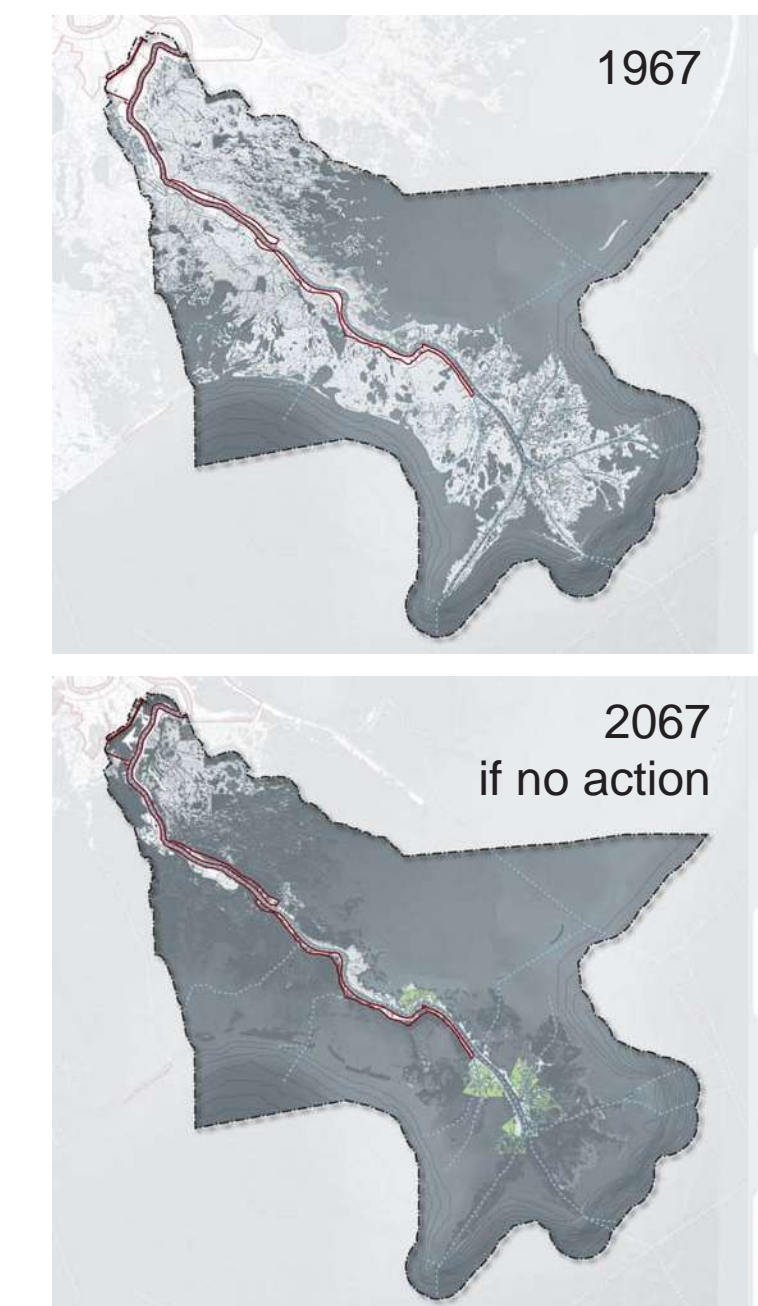


## ACTIVITY INSTRUCTIONS:

1. Take a closer look at this map that shows land change and population shifts.
2. Answer the questions below.
3. Draw on the map to show where you have seen these changes.

## ENVIRONMENT

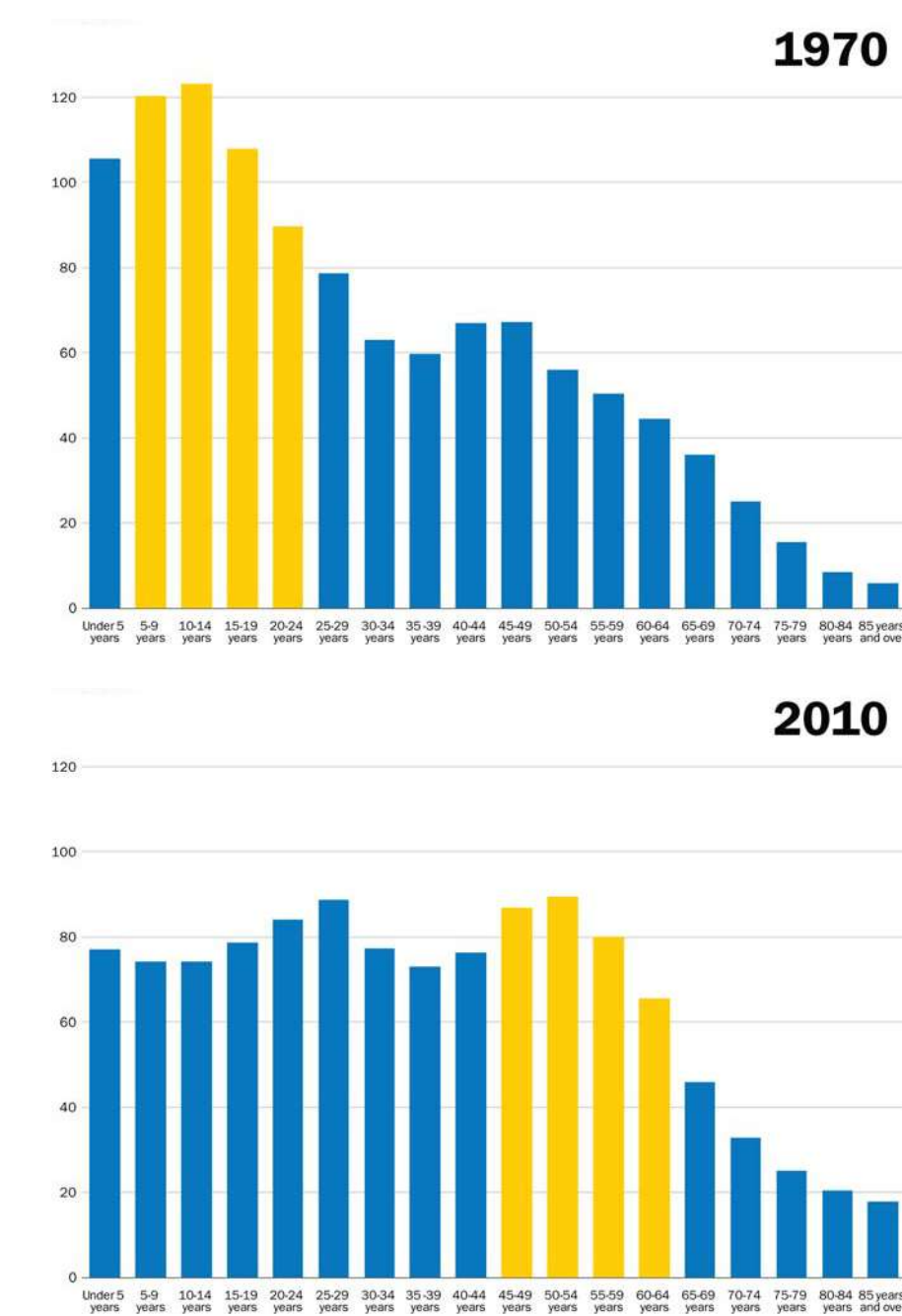
How have changes to the environment affected you?



Source: USGS & CPRA

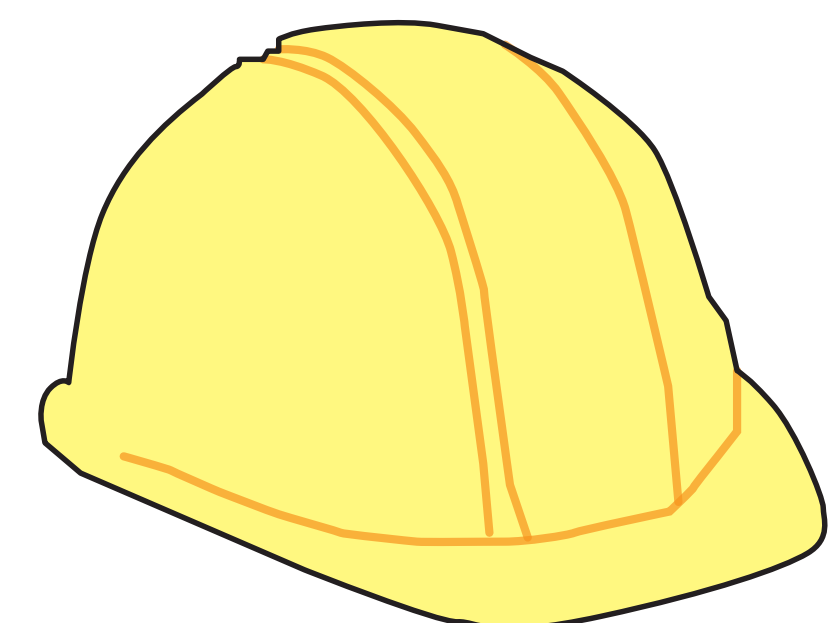
## POPULATION SHIFTS

How have changes in the population affected you?



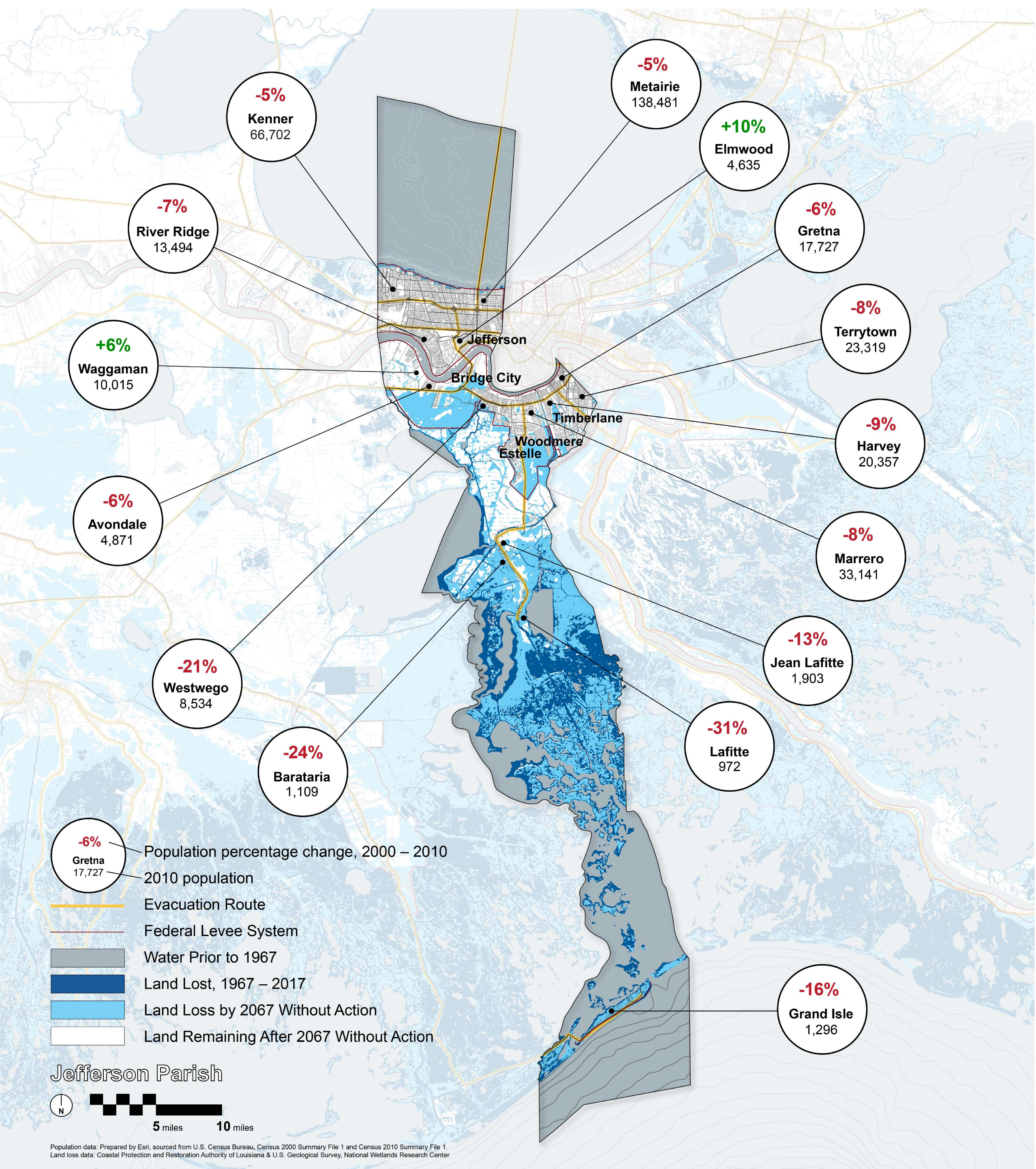
## ECONOMIC CHANGE

How have economic changes in the Parish affected you?





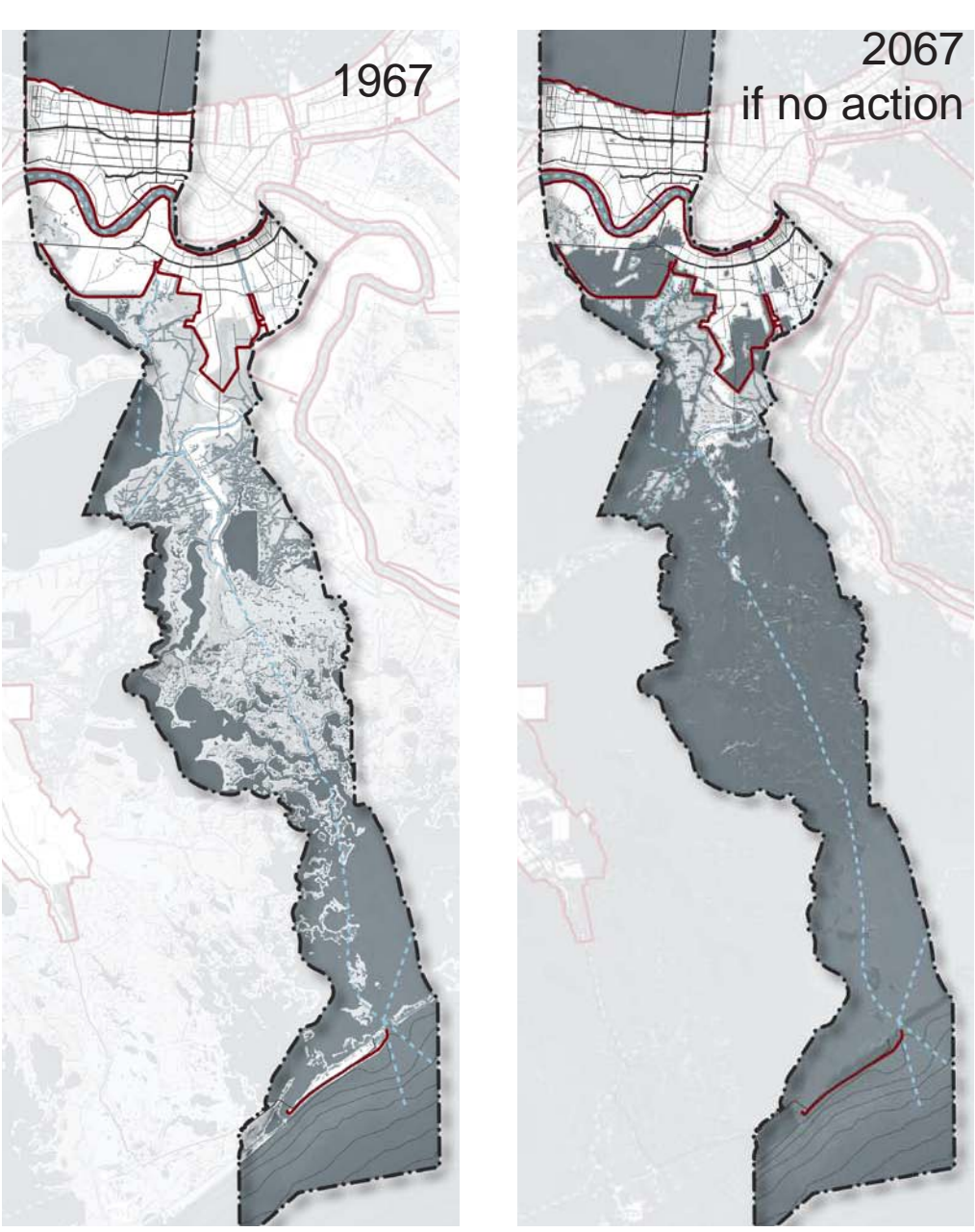
# WHAT DOES CHANGE MEAN TO YOU?



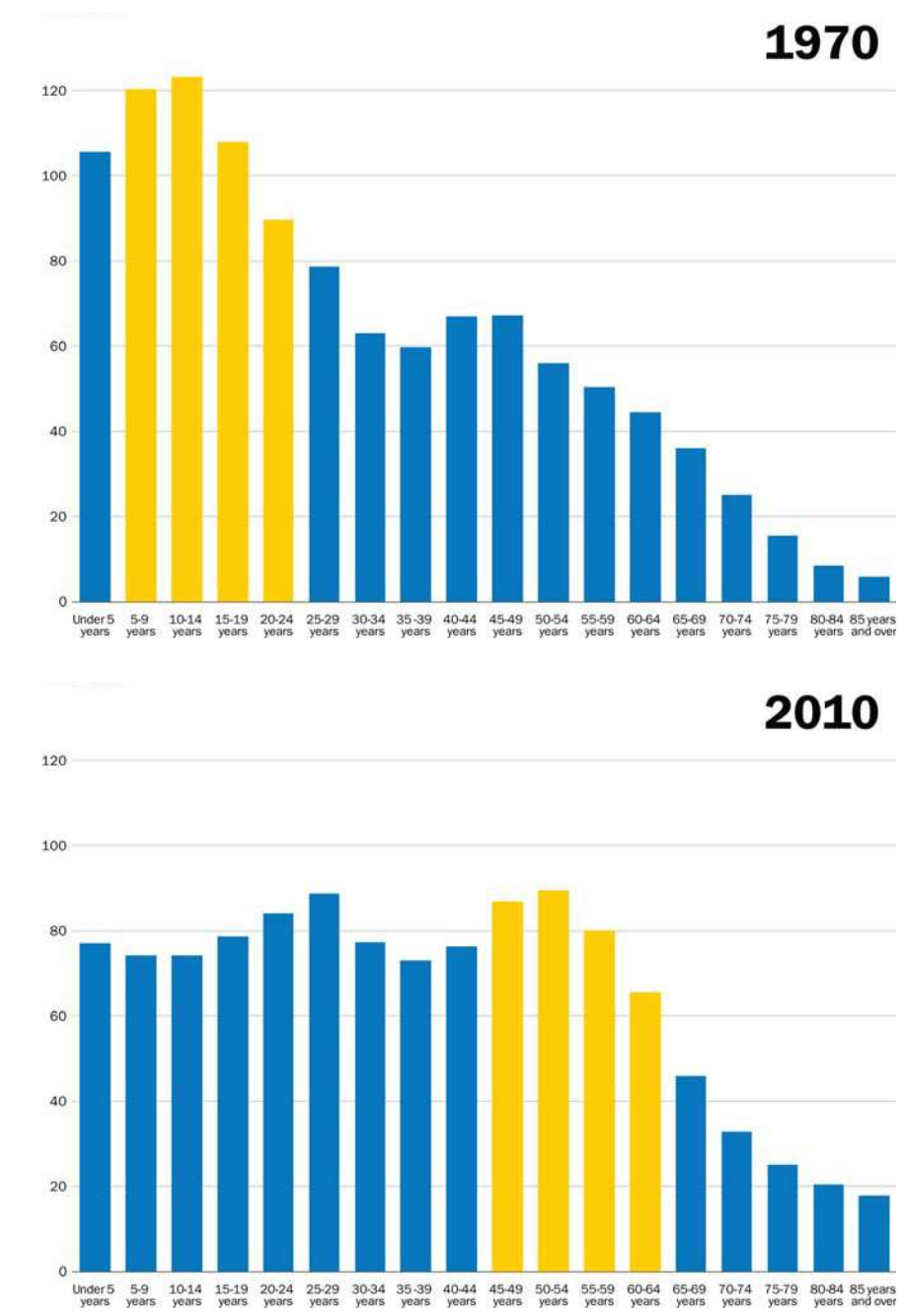
## ACTIVITY INSTRUCTIONS:

1. Take a closer look at this map that shows land change and population shifts.
2. Answer the questions below.
3. Draw on the map to show where you have seen these changes.

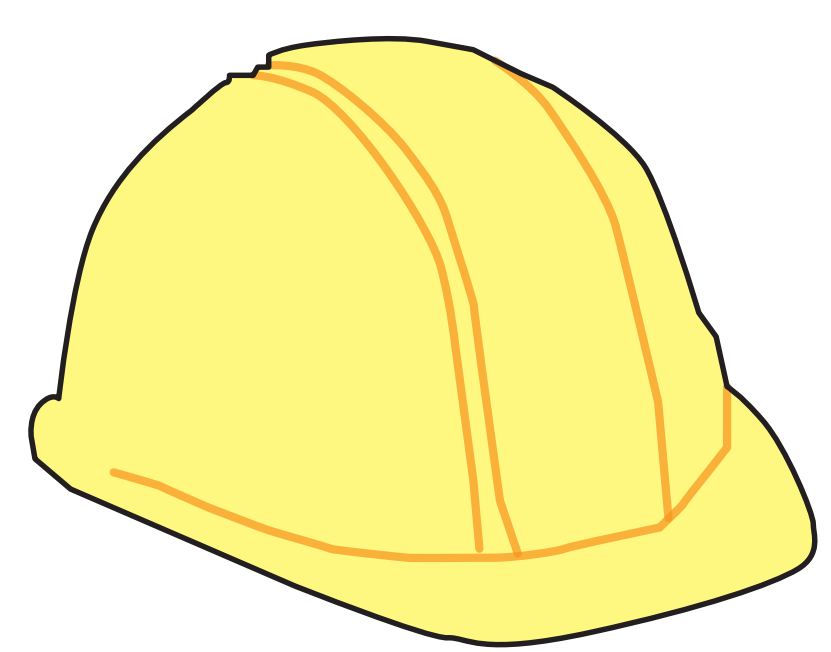
## ENVIRONMENT How have changes to the environment affected you?



## POPULATION SHIFTS How have changes in the population affected you?

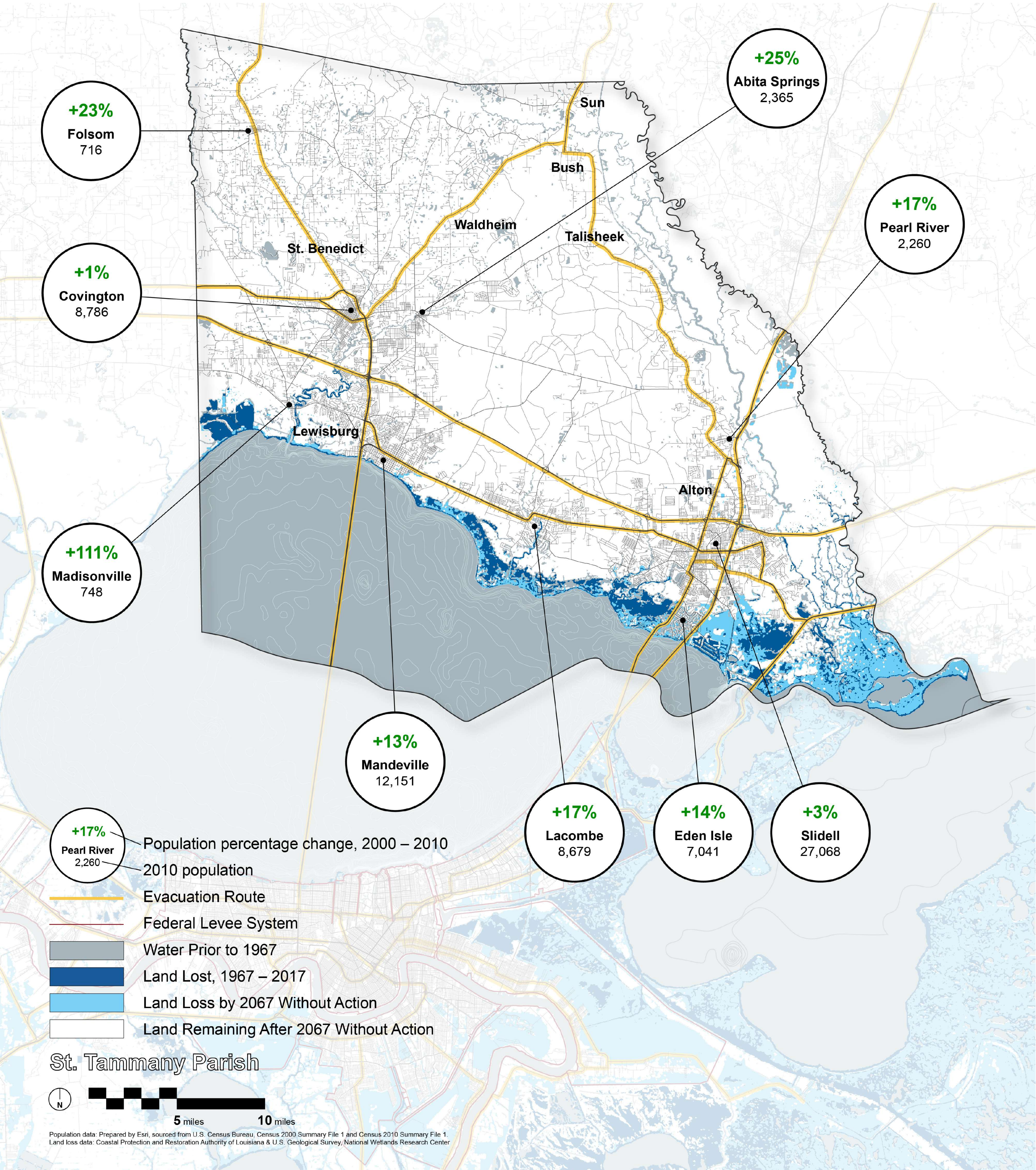


## ECONOMIC CHANGE How have economic changes in the Parish affected you?





# WHAT DOES CHANGE MEAN TO YOU?



## ACTIVITY INSTRUCTIONS:

1. Take a closer look at this map that shows land change and population shifts.
2. Answer the questions below.
3. Draw on the map to show where you have seen these changes.

## ENVIRONMENT

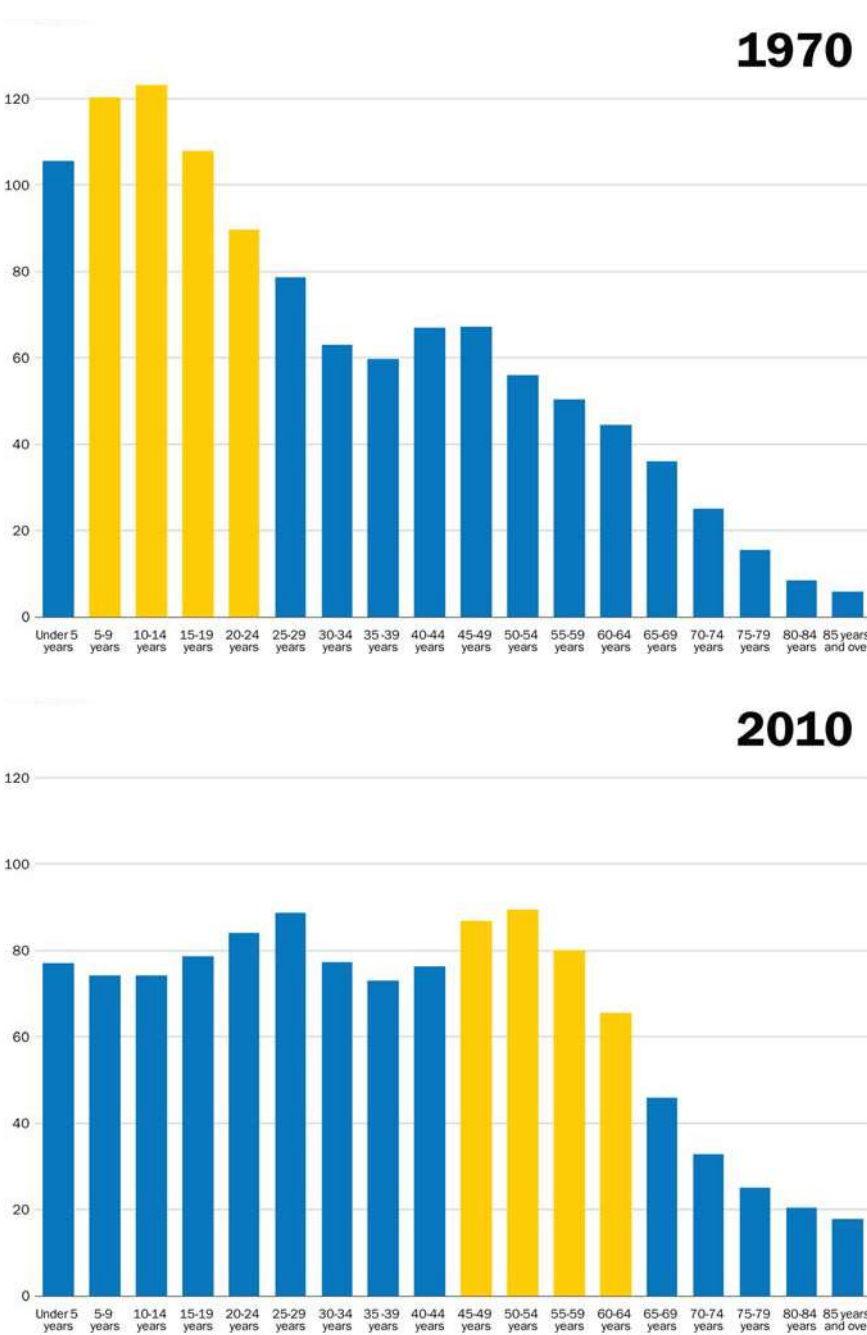
How have changes to the environment affected you?



Source: USGS & CPRA

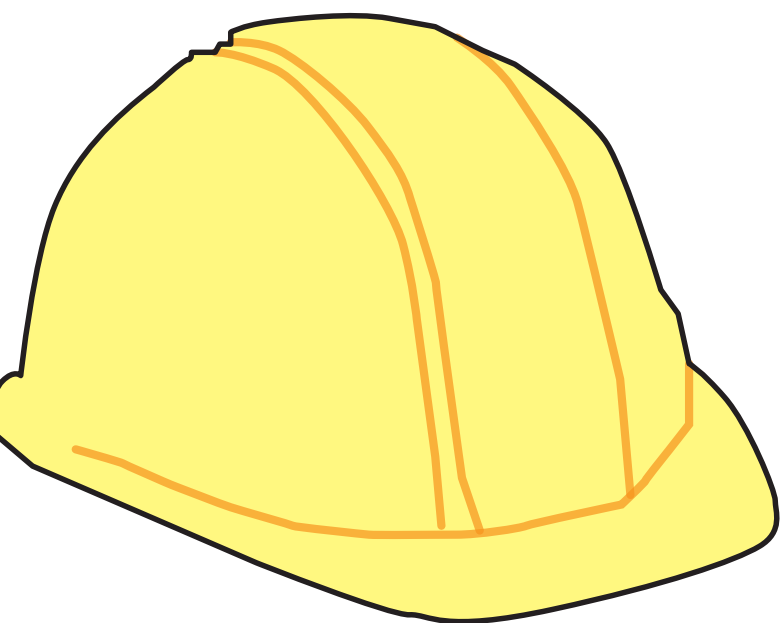
## POPULATION SHIFTS

How have changes in the population affected you?



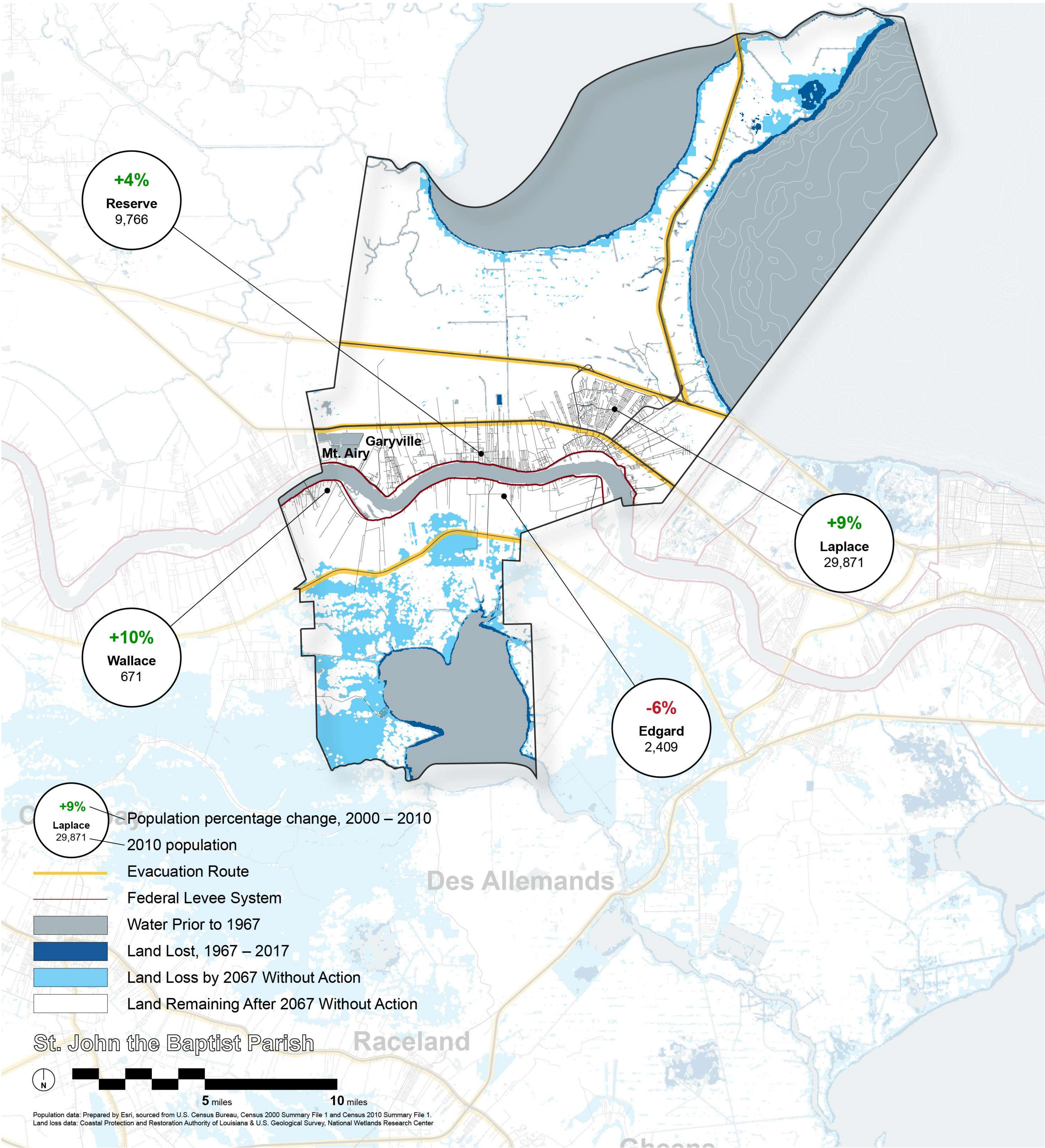
## ECONOMIC CHANGE

How have economic changes in the Parish affected you?





# WHAT DOES CHANGE MEAN TO YOU?

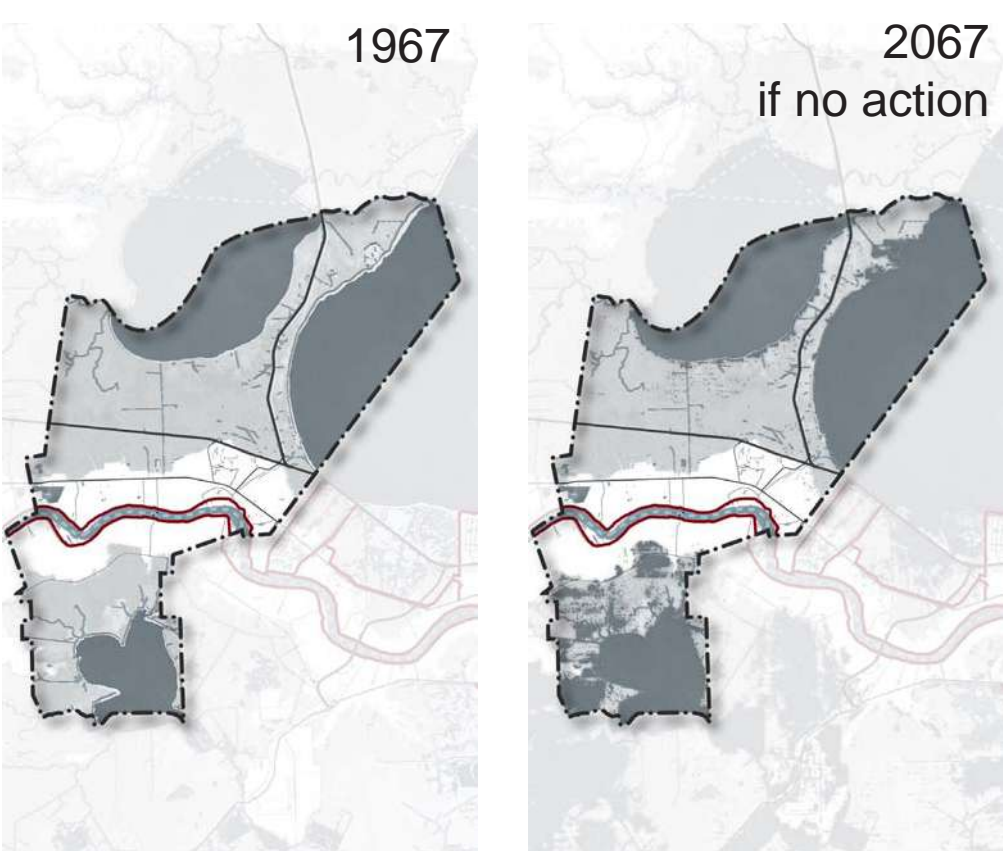


## ACTIVITY INSTRUCTIONS:

1. Take a closer look at this map that shows land change and population shifts.
2. Answer the questions below.
3. Draw on the map to show where you have seen these changes.

## ENVIRONMENT

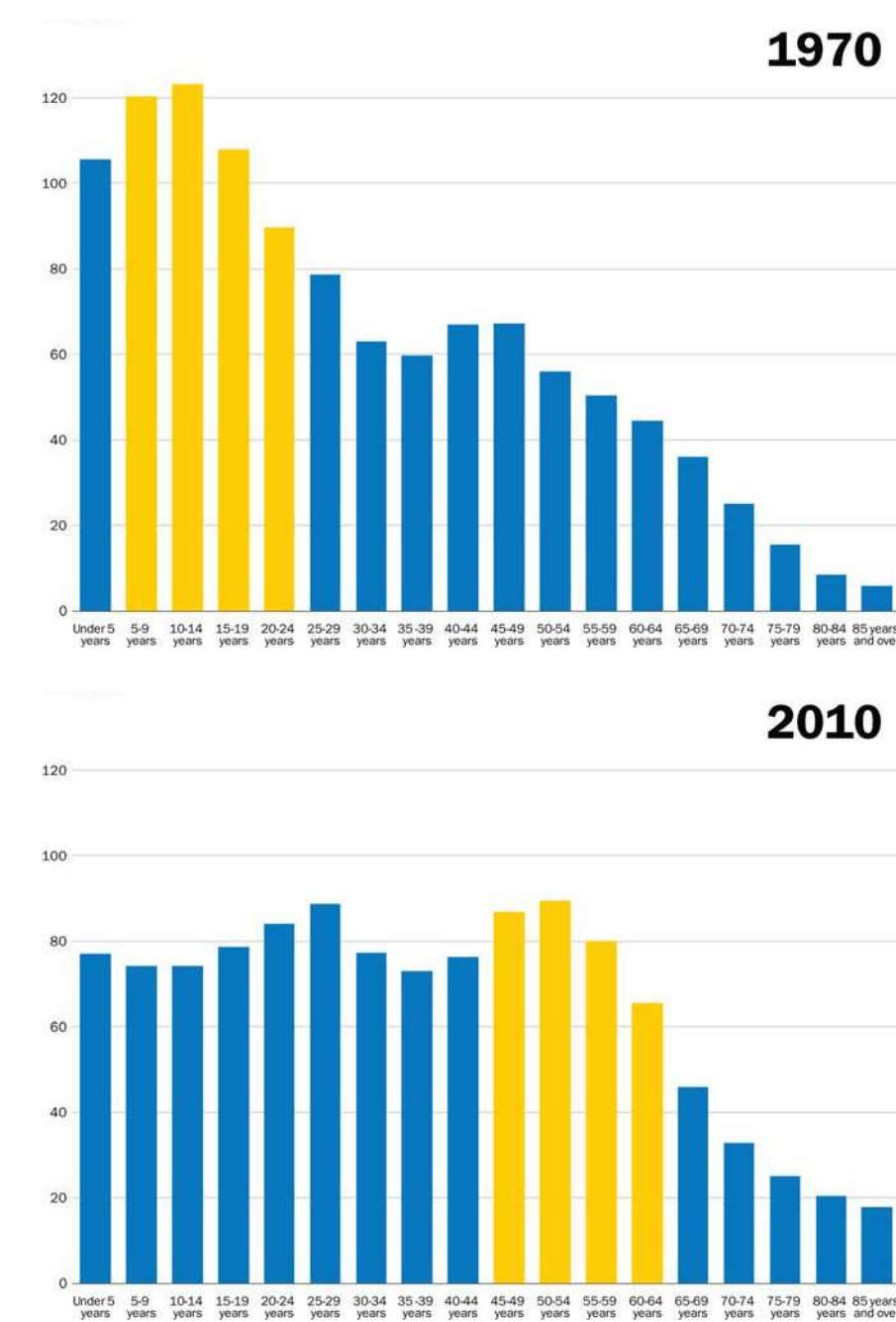
How have changes to the environment affected you?



Source: USGS & CPRA

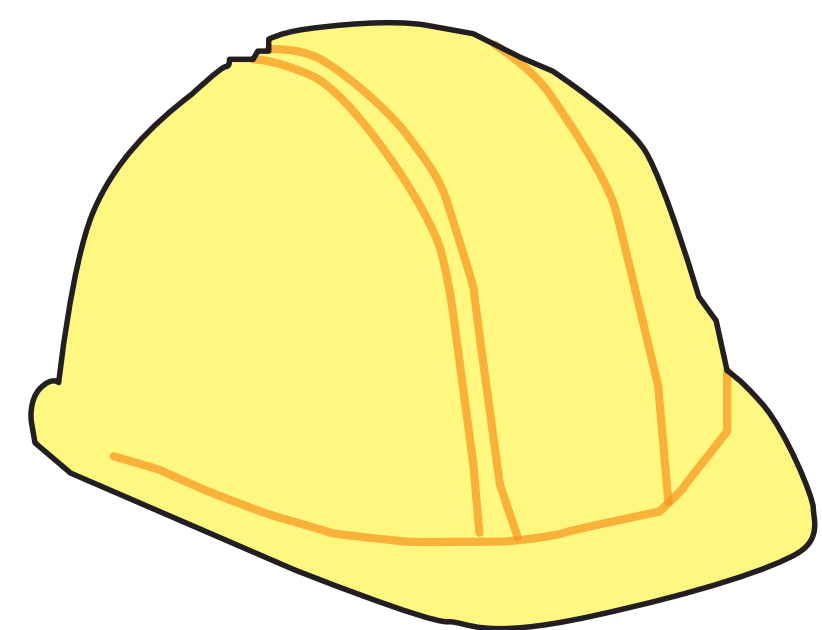
## POPULATION SHIFTS

How have changes in the population affected you?



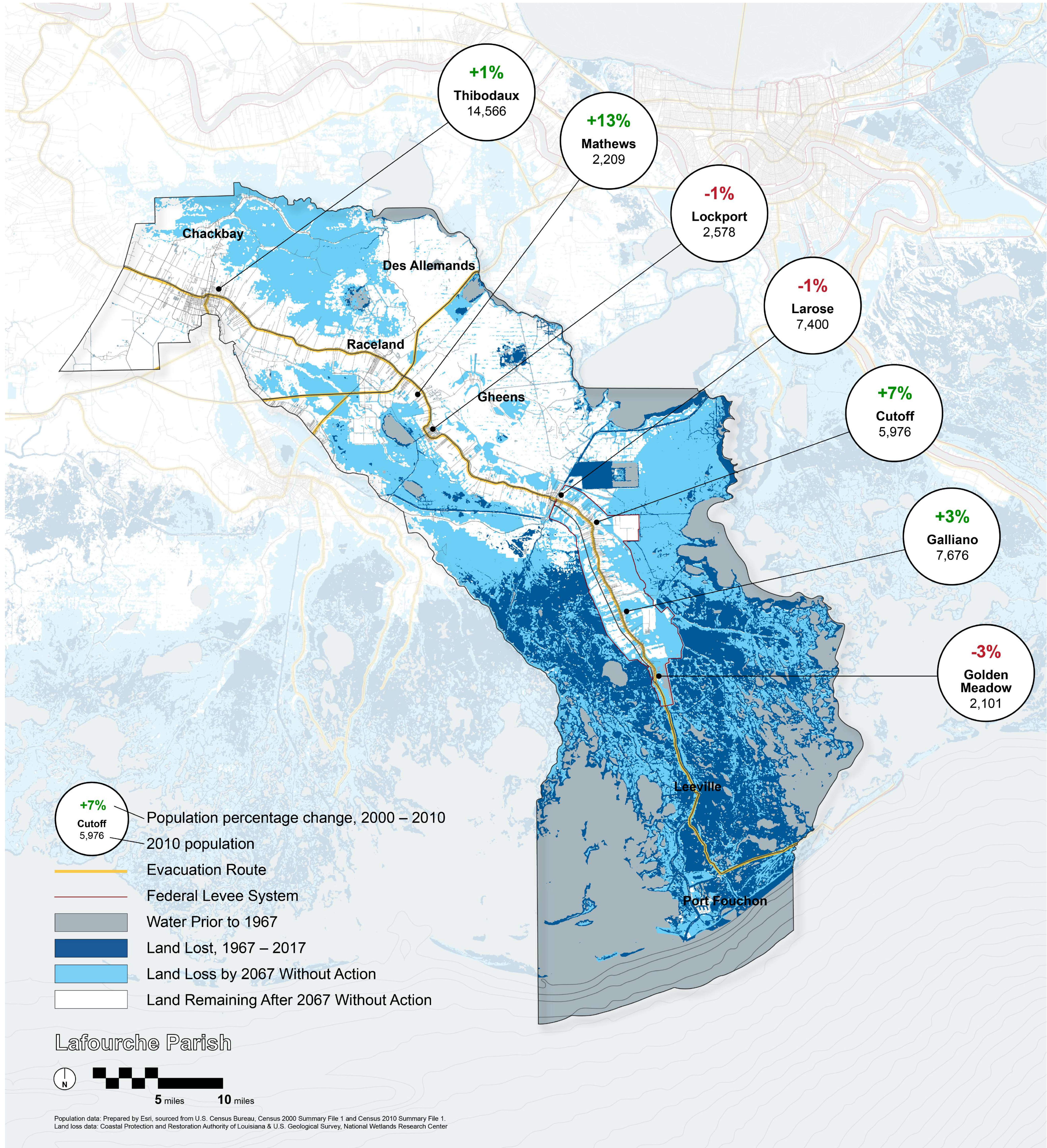
## ECONOMIC CHANGE

How have economic changes in the Parish affected you?





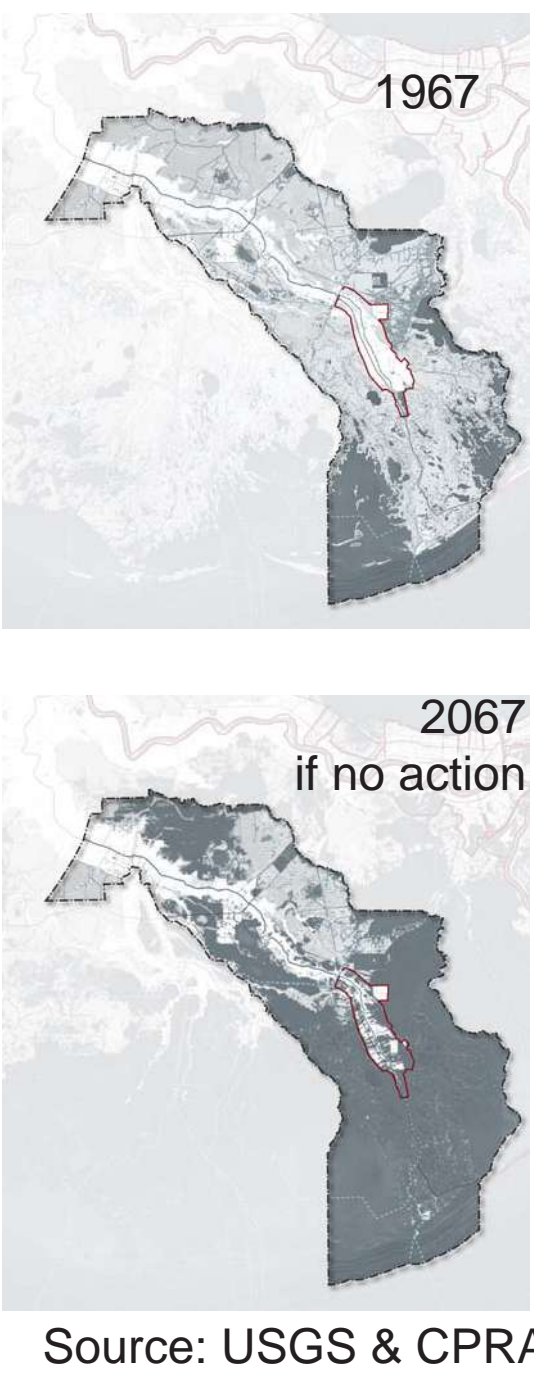
# WHAT DOES CHANGE MEAN TO YOU?



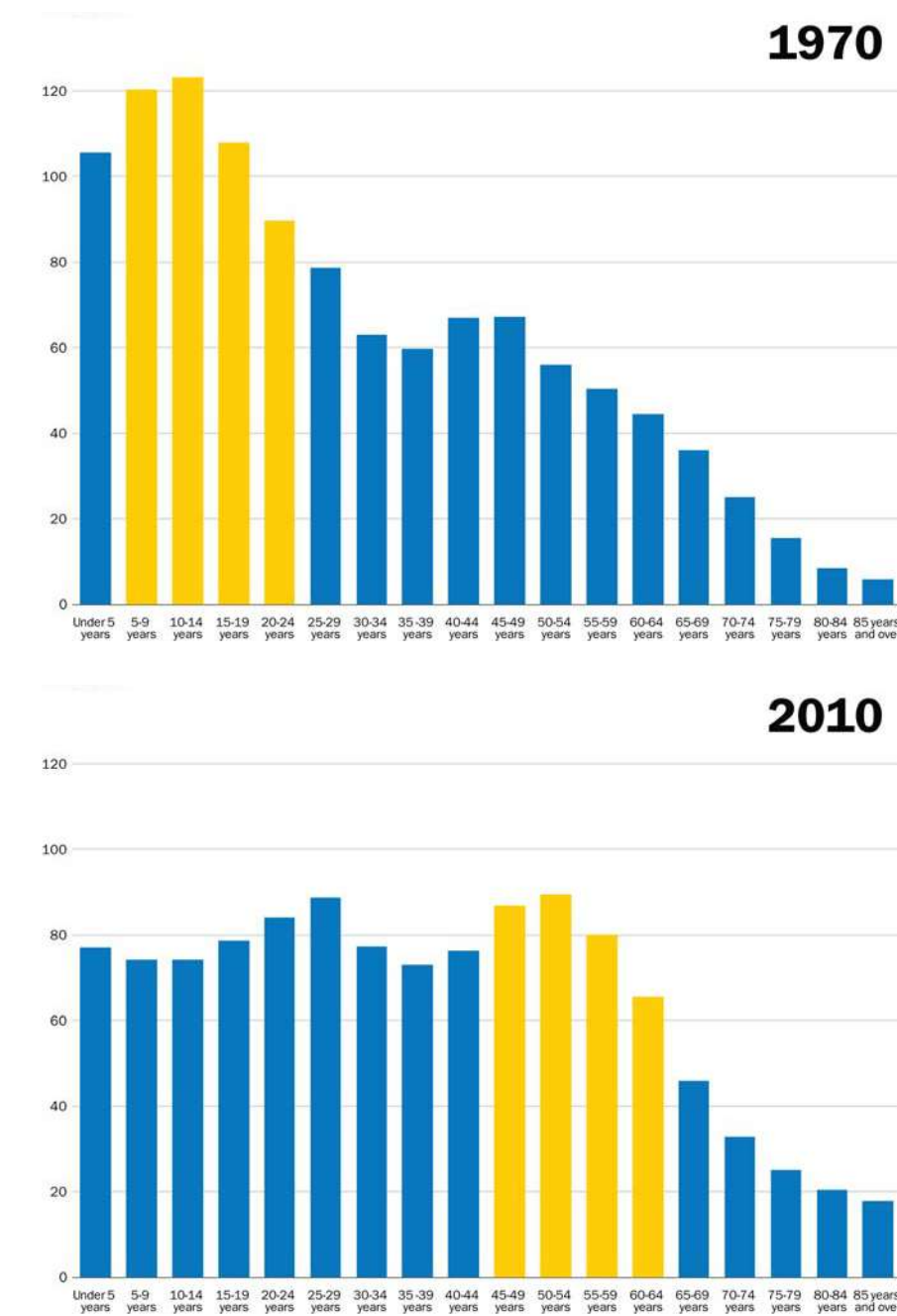
## ACTIVITY INSTRUCTIONS:

1. Take a closer look at this map that shows land change and population shifts.
2. Answer the questions below.
3. Draw on the map to show where you have seen these changes.

## ENVIRONMENT How have changes to the environment affected you?



## POPULATION SHIFTS How have changes in the population affected you?



## ECONOMIC CHANGE How have economic changes in the Parish affected you?

