



Precedent image of outdoor classroom on the water



Precedent image of pavilion along trail with boardwalk and overlook



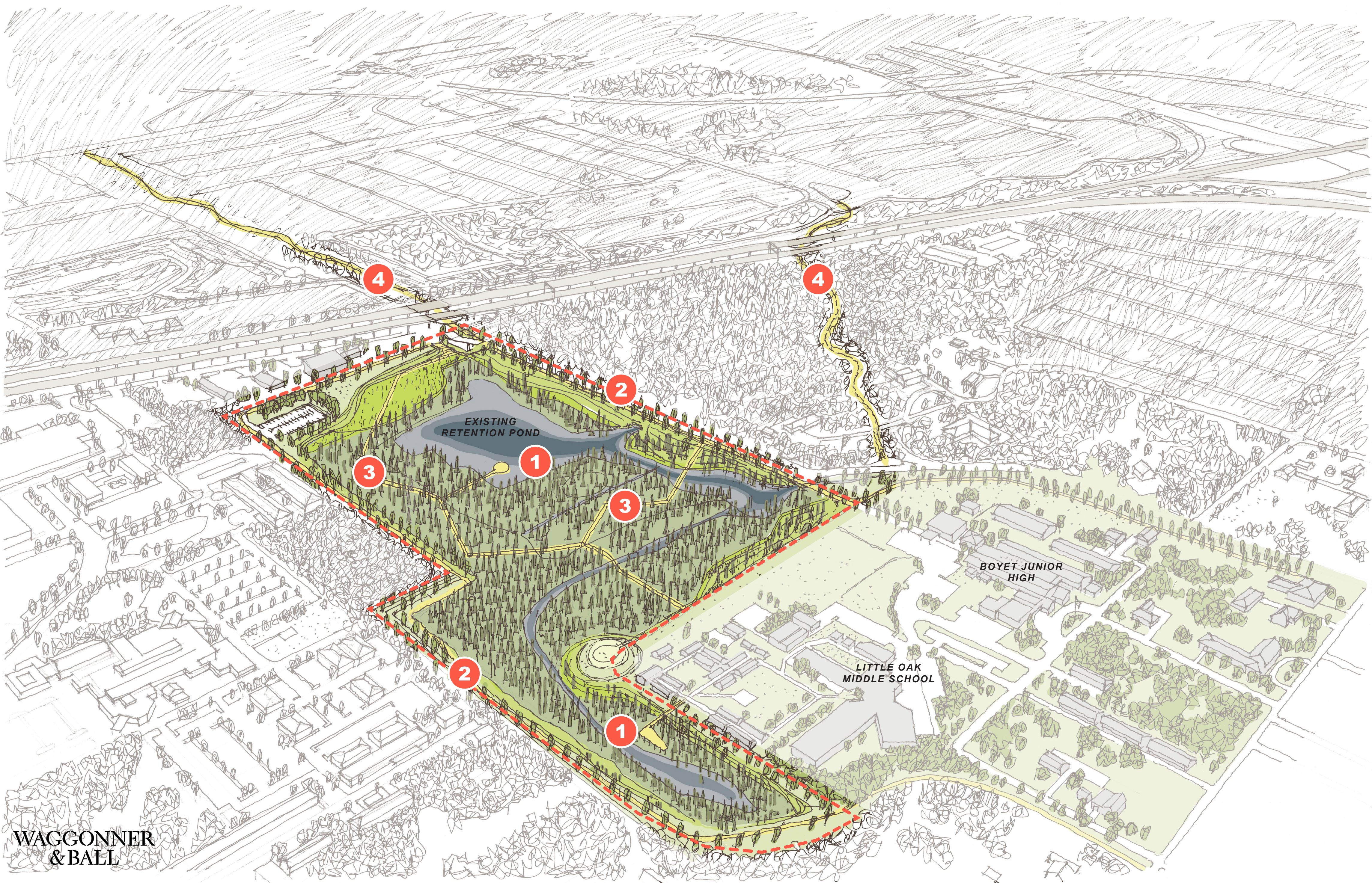
Precedent image of multi-use trail under bridge along water



Precedent image of multi-use trails with steps and lighting along water



Existing Condition
Transform informal path into community amenity



Aerial View



Perspective View

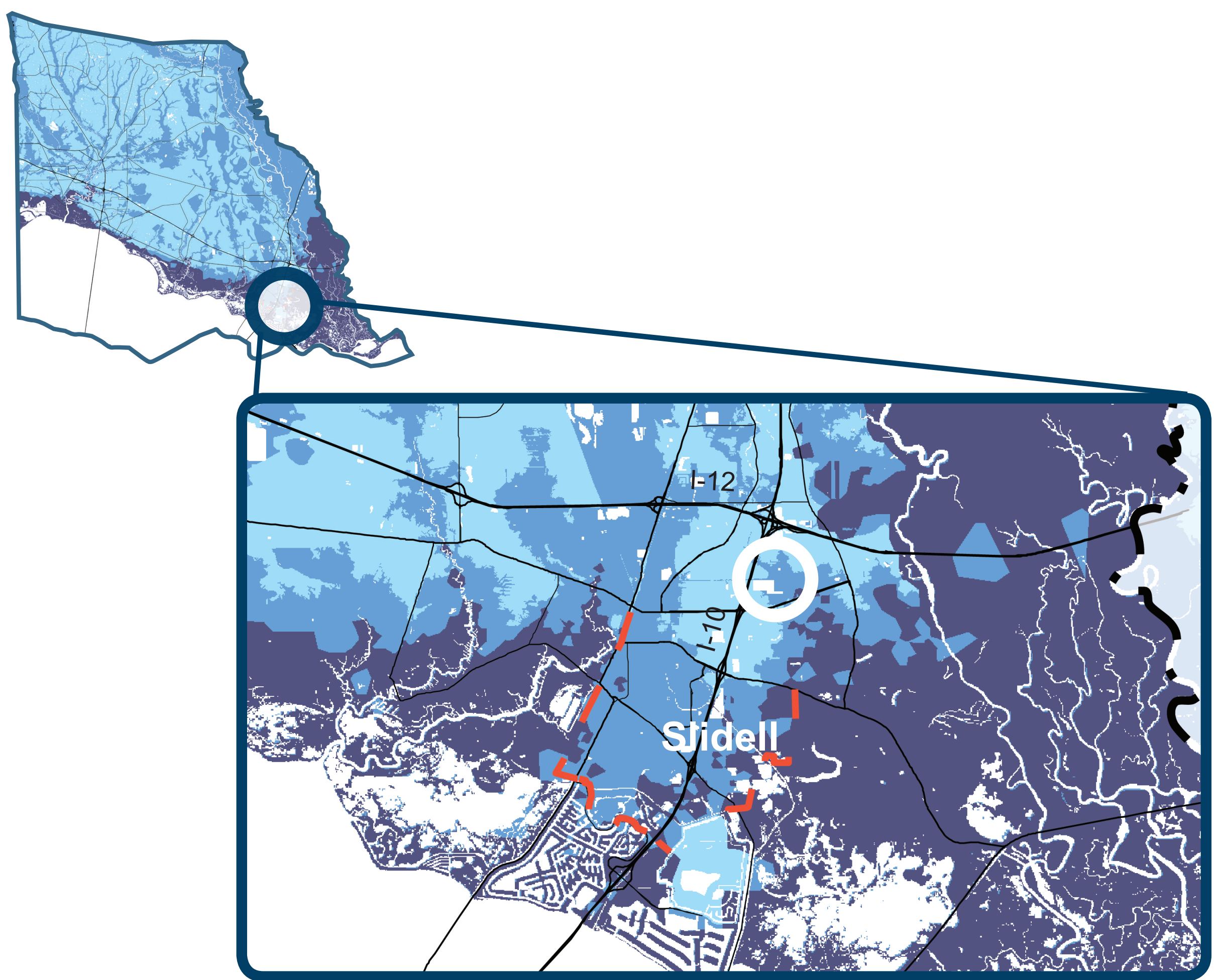
- 1 Open Classroom overlook and boardwalk
- 2 Pedestrian and bicycle pathway
- 3 Floodable boardwalks crossing over cypress forest
- 4 Formalized trail under highway to connect French Branch Pond to existing trail network

PROPOSAL

Even in higher ground locations, natural systems must be maximized to retain stormwater in response to current and heightened future flood risk. French Branch Pond will be converted to a high-capacity stormwater detention area in 2018, providing 324 acres of floodplain storage in a critical drainage area. This proposal adds a suite of recreational and educational amenities transforming the traditional detention pond into a community asset. Proposed amenities include educational signage throughout, a walking/biking path surrounding the pond, floodable boardwalks within the pond, and a new trail under I-10 connecting to the City of Slidell's existing trail network.

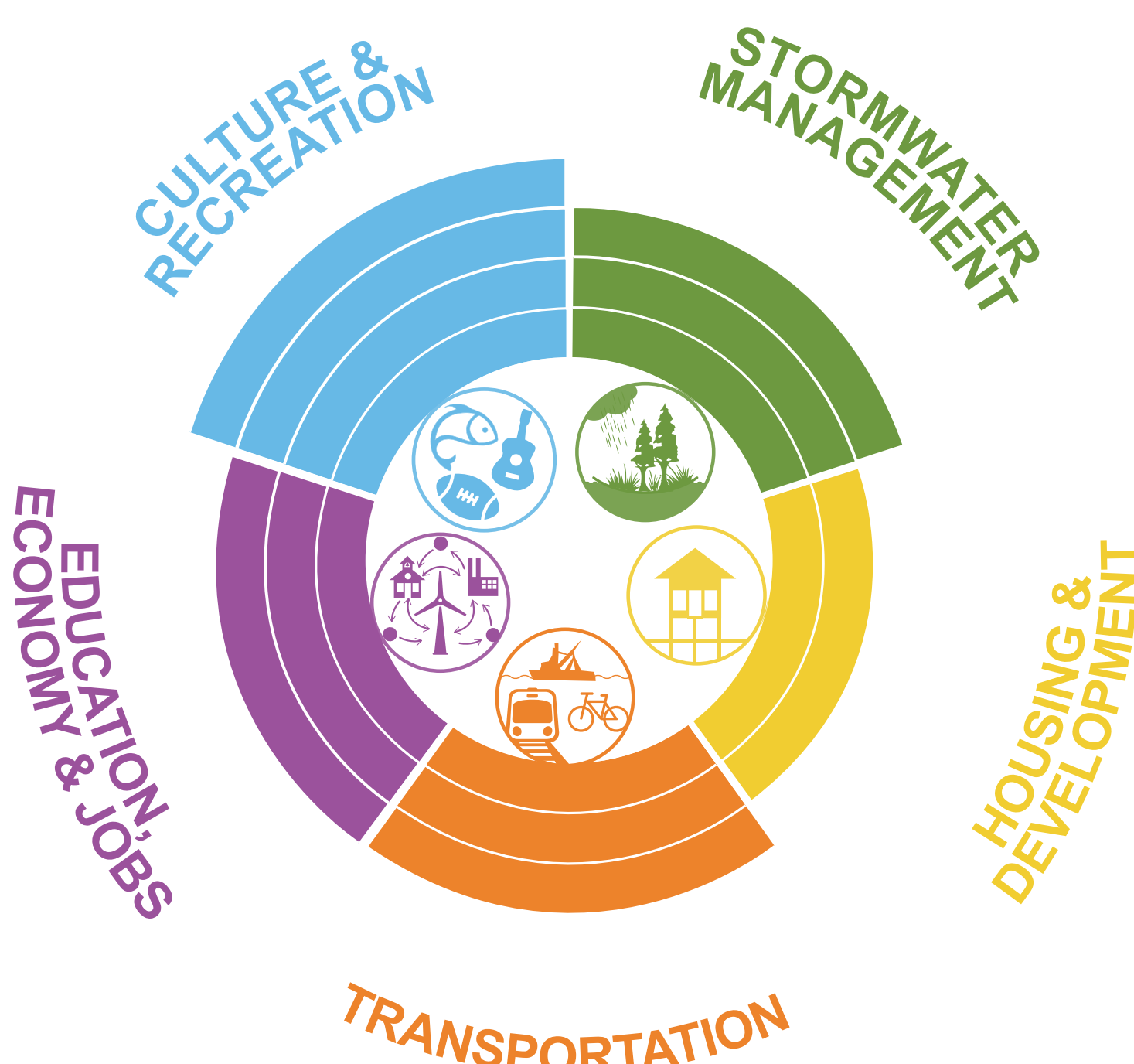
Key Info

Project Area	Approx. 55 acres
LA SAFE Investment	Up to \$3.7M
Estimated Project Cost	\$3.7M
Partners	St. Tammany Parish, FEMA, City of Slidell
Location	Slidell



Source: CPRA & FEMA

Community Benefits



Reduces surrounding neighborhood and street flooding by expanding detention capacity.



Improves property values and incentivizes new development by creating a community asset and reducing flood risk.



Helps to alleviate potential for street flooding and danger to motorists by retaining stormwater runoff; increases neighborhood walkability and bikeability.



Creates a community asset and educational tool for nearby schools to highlight the benefits of stormwater management projects.



Provides community recreational opportunities through access to water and trails.

COMMENTS