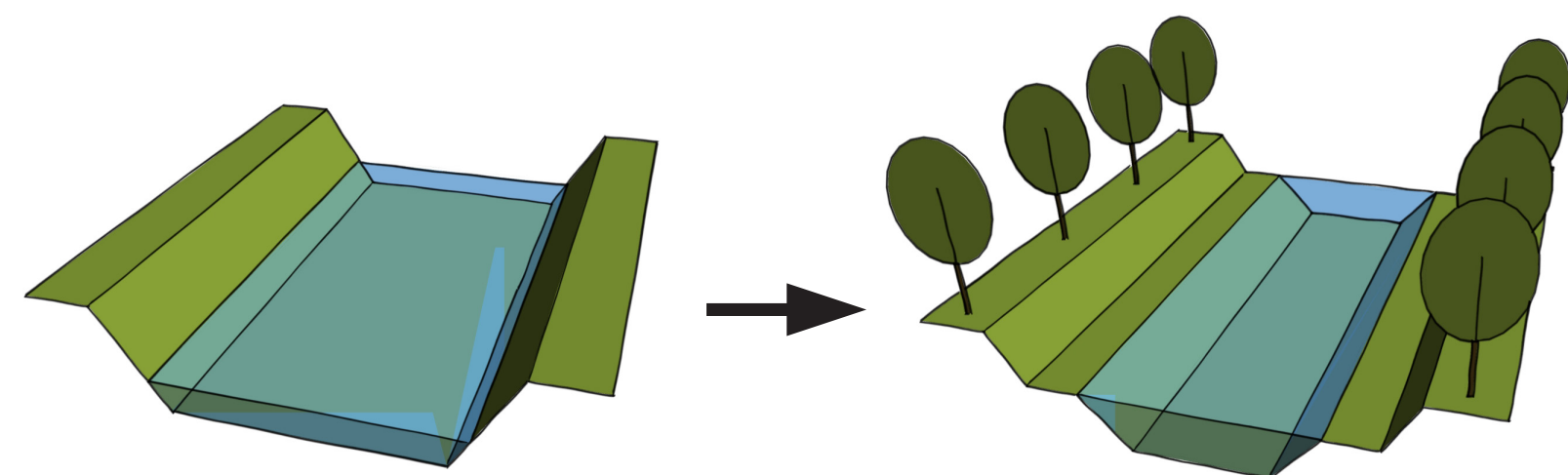


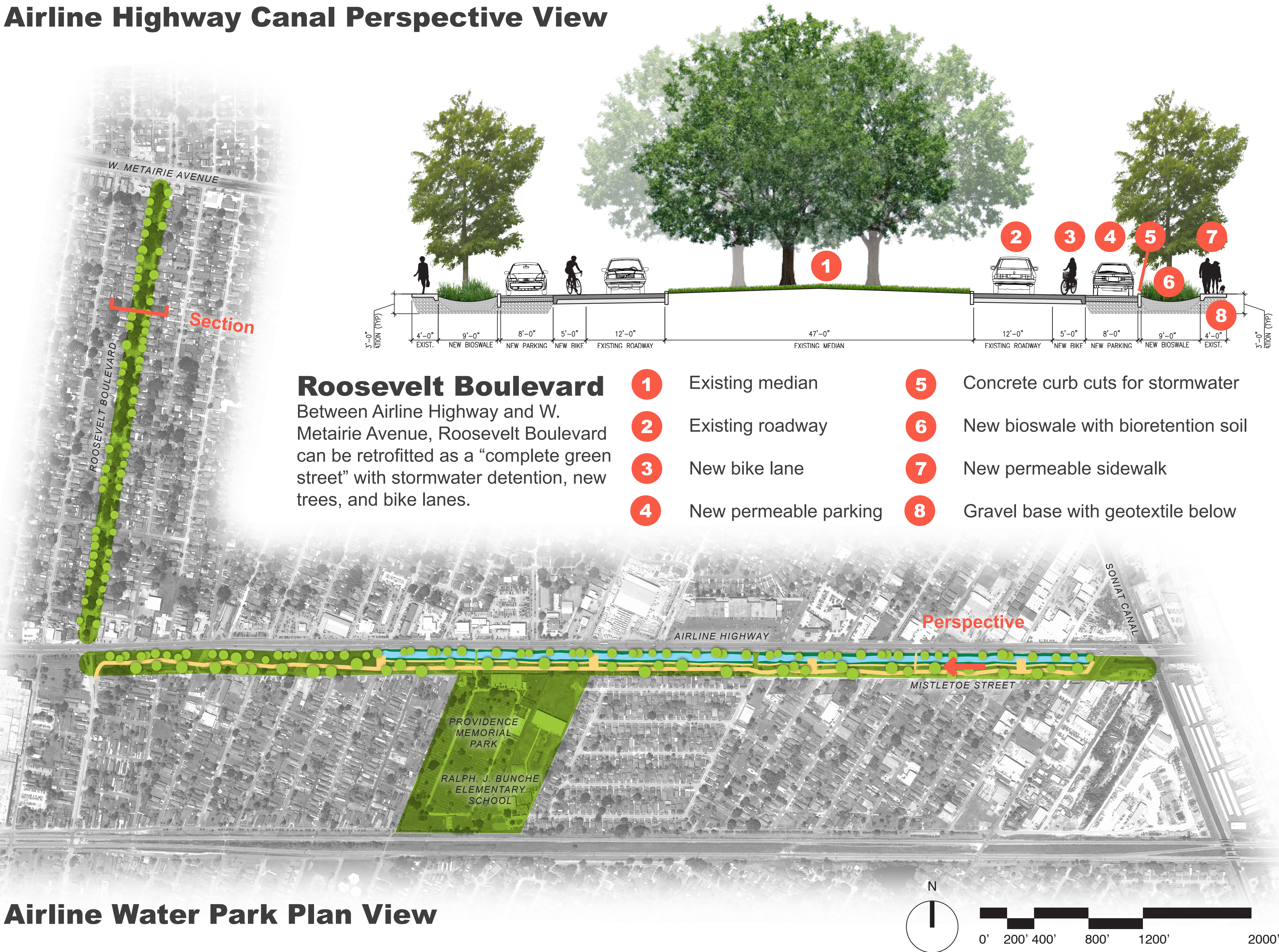
Airline Highway Canal Perspective View



Airline Highway Canal Retrofit
Between Roosevelt Boulevard and the Soniat Canal, the existing canal along Airline Highway can be reshaped to have sloped planted sides, a wider flood plain, and a higher water level on dry days.



Existing canal along Airline Highway.



Precedent image of the Westersingel Canal in Rotterdam. The lower path (left) can safely flood during extreme rainfall.



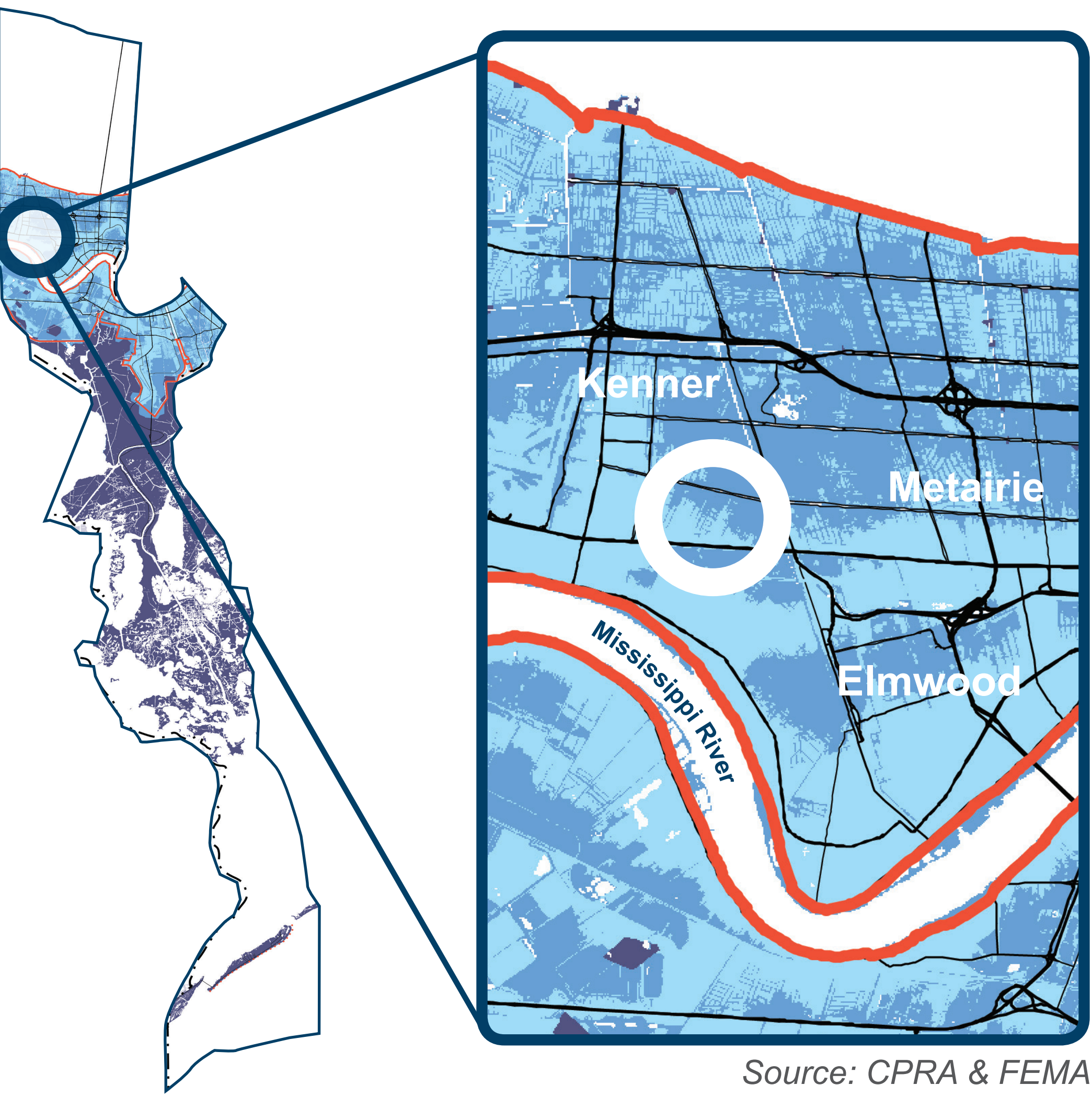
Vision: A Regional Park
These improvements to Roosevelt Boulevard and the Airline Highway canal could be the first step in a long-term vision of a regional park stretching from Louis Armstrong Airport to downtown New Orleans.

PROPOSAL

Envisioning a future with heightened flood risk, it will be important to implement large-scale stormwater strategies within urban and suburban environments. Situated in an area ripe for redevelopment and adjacent to a major roadway (and evacuation route), the Airline Water Park introduces an elongated community space adjacent to Airline Hwy. between the Soniat Canal and Roosevelt Blvd. The park provides stormwater management features, offers recreational opportunities, and supports complementary community revitalization efforts for an area of Jefferson Parish adjacent to concentrations of underserved residents.

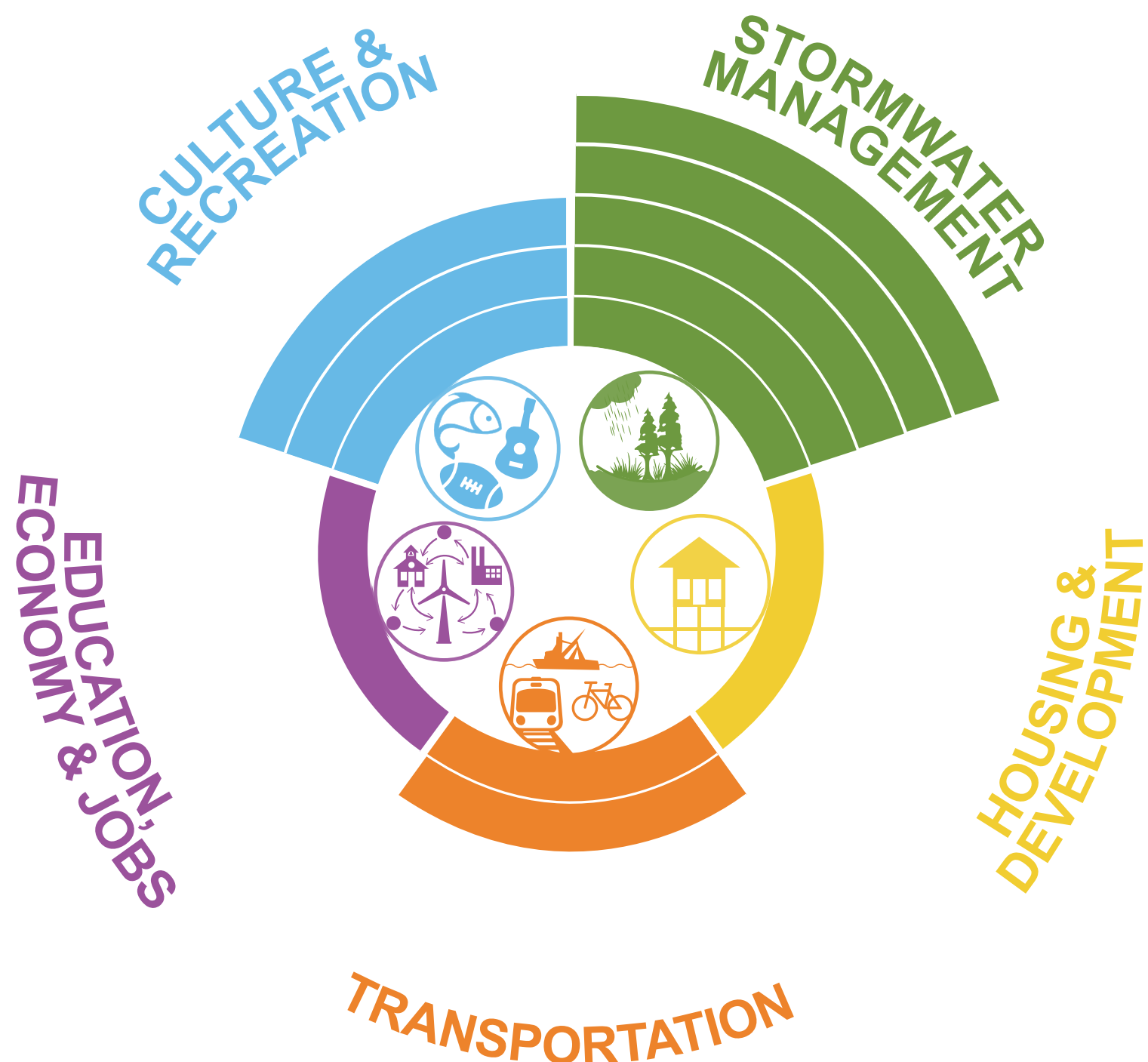
Key Info

Project Area	Airline Hwy - 8,000 L.F. Roosevelt Blvd - 3,500 L.F.
LA SAFE Investment	\$6 million
Estimated Project Cost	Airline Hwy - \$9.0M Roosevelt Blvd - \$3.9M
Partners	Jefferson Parish
Location	Airline Drive between Soniat Canal and Roosevelt Blvd.



Source: CPRA & FEMA

Community Benefits



- Incorporates green infrastructure components into recreational areas to alleviate street flooding, slow and detain runoff from Airline Hwy. Key elements include bioswales, rain gardens, and increased tree canopy.
- Supports holistic community revitalization efforts in surrounding neighborhoods and for businesses along Airline Highway.
- Provides neighborhood access points to increase community connectivity, promote walkability.
- Supports economic development revitalization efforts along Airline Hwy. by providing a community space; provides educational opportunities through signage at the park.
- Creates a new public amenity enhancing quality of life in the surrounding area and provides park space within a heavily-developed area.

COMMENTS