

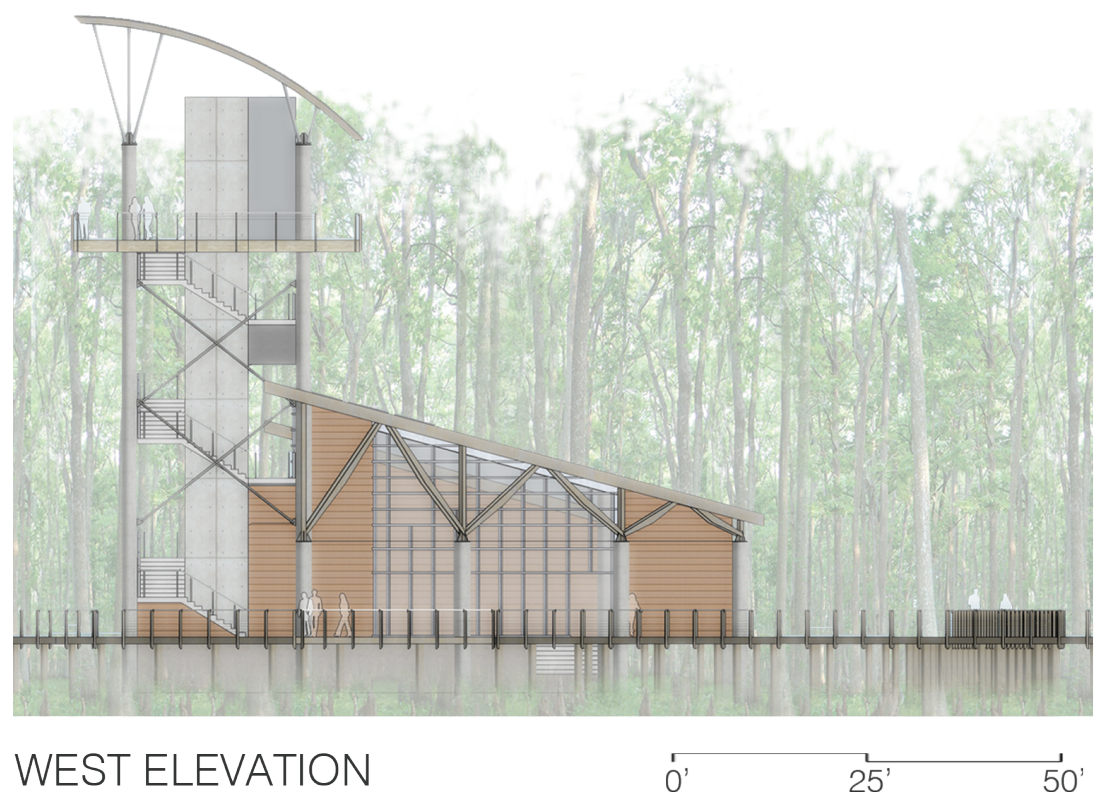


WHLC Architecture

### Phase II: Wetlands Education Center and Replica Fishing Village

#### 1. Wetlands Education Center will include:

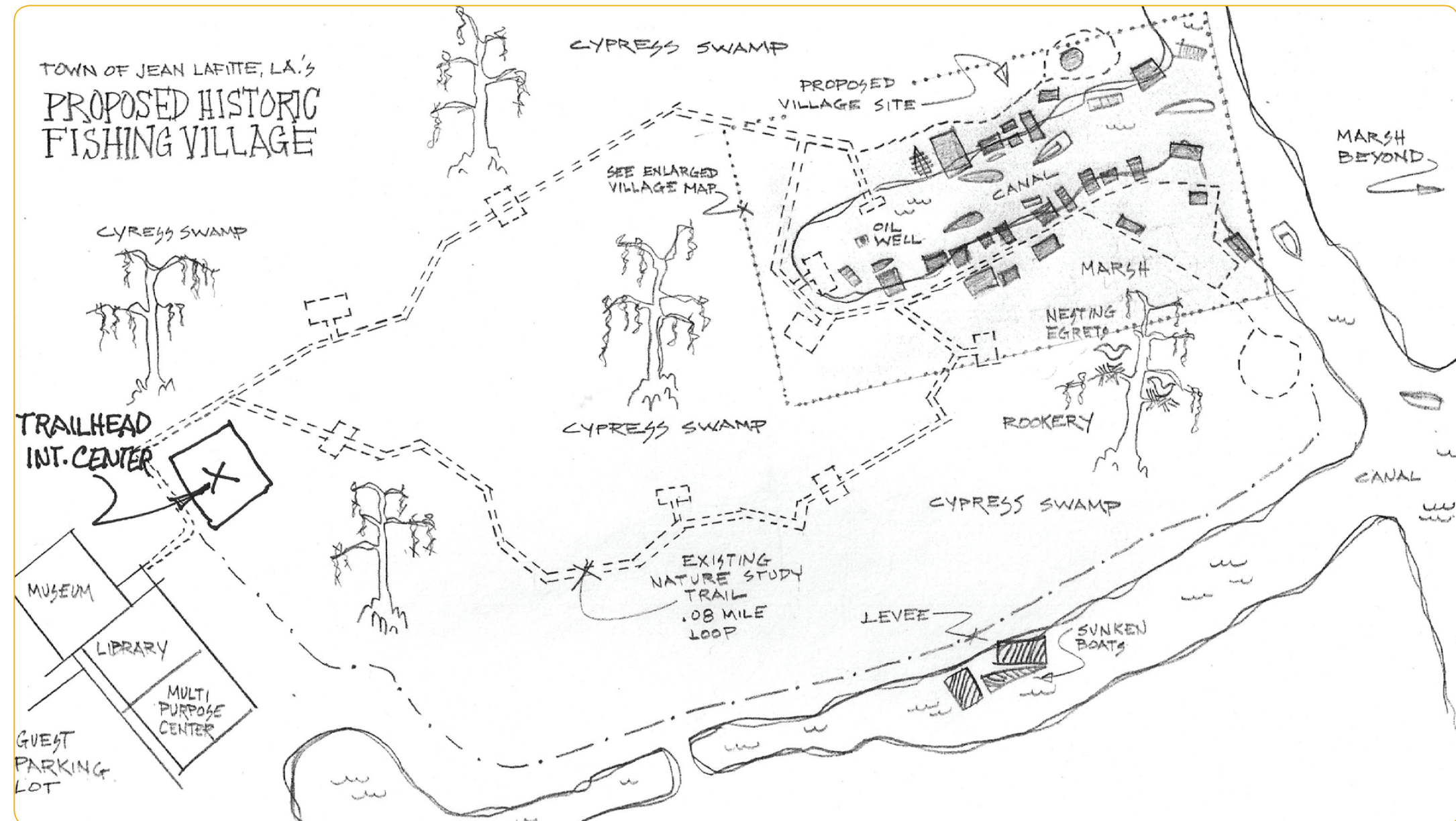
- Combination classroom and film theater with seating for approximately 80 students.
- Small meeting rooms for private research.
- Multiple restoration, preservation, and adaptation displays with emphasis on wetland ecosystems.
- Several interactive and static galleries and exhibits, including turtles, spiders, baby alligators, etc.
- Large observation windows, an outdoor observation deck and an observation tower.
- Gift shop and first aid station.



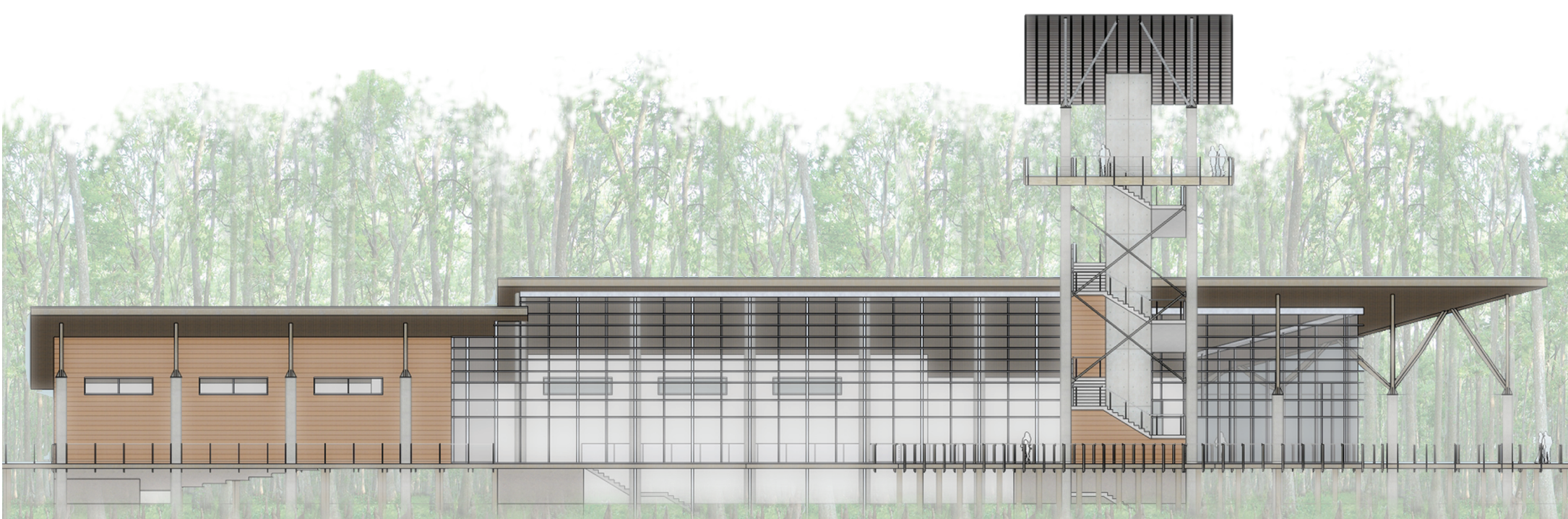
WEST ELEVATION



EAST ELEVATION



Drawing by Welldone, LLC



NORTH ELEVATION

Architectural design and renderings by WHLC Architecture

### The Master Plan:

**Phase I:** Create a Multipurpose Resource Facility (complete)

**Phase II:** Construction of a Wetlands Education Center and Replica of a Fishing Village

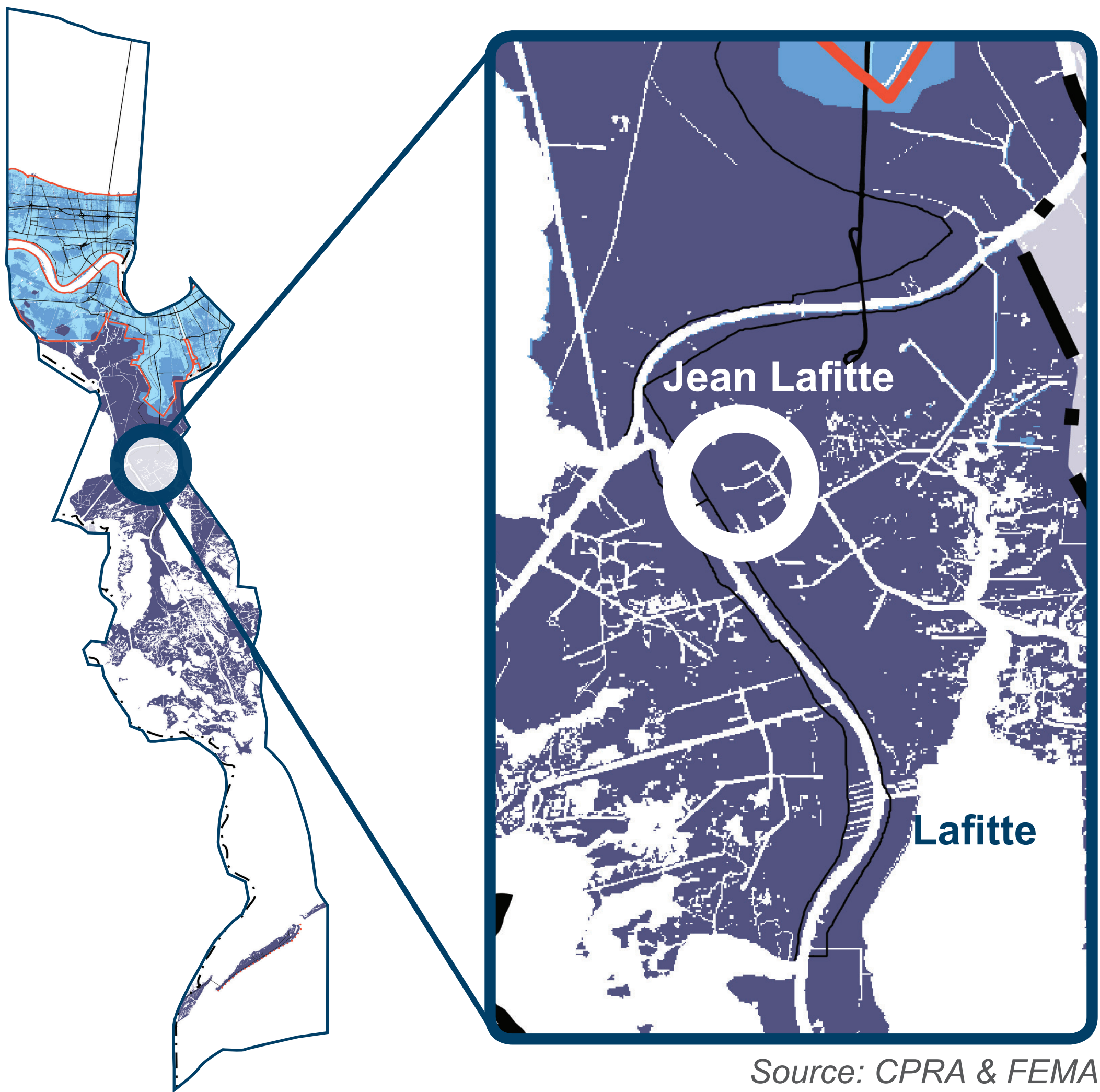
**Phase III:** Expansion of Amenities and Cultural Activities at the Fishing Village

## PROPOSAL

LA SAFE has emphasized the value of educating our coastal population about current and future environmental conditions and the effects of flood risk. The Louisiana Wetlands Education Center will be an educational asset serving students and families in the region, with programming for all ages, including a research outpost and meeting location for agencies and institutions. The Center will promote preservation, conservation, and adaptation related to wetland ecosystems, using its location in the Lafitte area as an outdoor classroom. Future phases would include an expanded fishing village to learn about coastal community traditions, a treetop ropes course, water taxis to Grand Isle, kayak and canoe rental and overnight cabins. The Center is complementary to the existing Lafitte Fisheries Market, and adjacent to the Auditorium, Nature Trail and Multi-Purpose Facility and Museum. Under this proposal, LA SAFE will potentially provide funding toward the Center's construction.

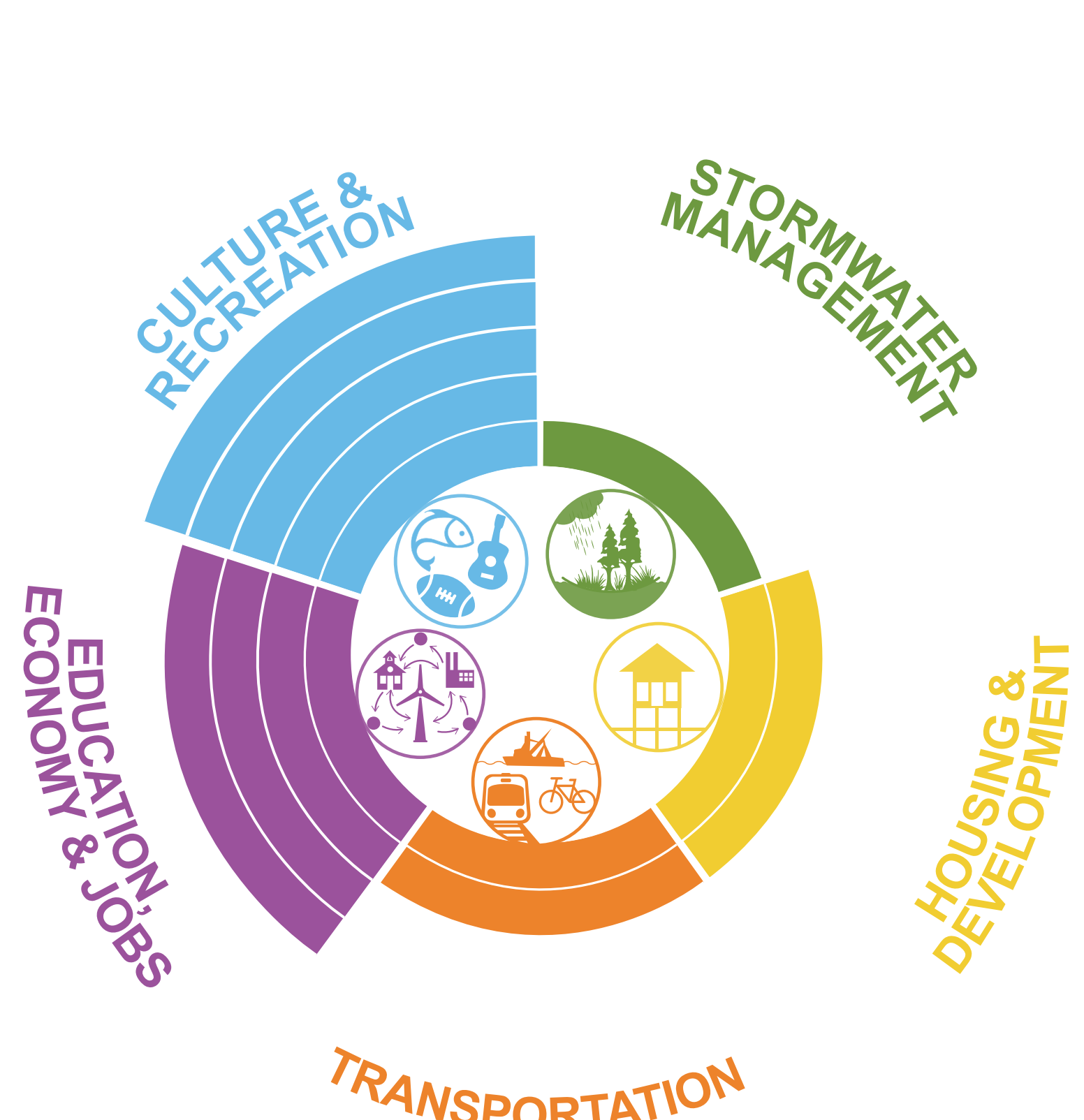
### Key Info

LA SAFE Investment	Up to \$6.5 million
Estimated Project Cost	Up to \$12.1 million
Partners	Town of Jean Lafitte
Location	Jean Lafitte



Source: CPRA & FEMA

### Community Benefits



Building designed to model development suitable to high risk areas.



Master plan includes water taxis, tour boats, and trips to destinations like Grand Isle. Boardwalks and trails provide access to wetland ecosystems.



Provides educational opportunities for all ages, focusing on the ecology and culture of wetland areas. The center will provide jobs for science educators and local craftspeople to demonstrate traditional techniques.



Provides a recreational destination connected to nature, including boardwalks, trails and outlook decks. Cultural programming includes traditional boatmaking, netmaking, duck carving, storytelling and other interactive exhibits.

## COMMENTS