

B GRAND CAILLOU ENVIRONMENTAL, CULTURAL, AND BUSINESS CENTER



Aerial View Looking North

- 1

New Waterfront Gazebos for Seafood Retail with Boat Docks
- 2

Parking Lot with Permeable Pavers
- 3

New Roof on Existing Commercial Kitchen to be used for Seafood Processing
- 4

Existing Buildings - Renovation for New Uses
- 5

Retention Ponds
- 6

Boardwalk and Educational Discovery Trail
- 7

New Observation and Educational Platform (Open Classroom)
- 8

Educational Signage (Ex. "At this Point, You are 4 1/2 feet Below Sea Level")
- 9

New Trails in Forested Wetland
- 10

Retention Pond/Bioswale
- 11

New Boardwalk Connecting to Existing Trails
- 12

Existing Pump Station - Future upgrades can include windows & signage retrofits for educational purposes



Plan of Project Proposal

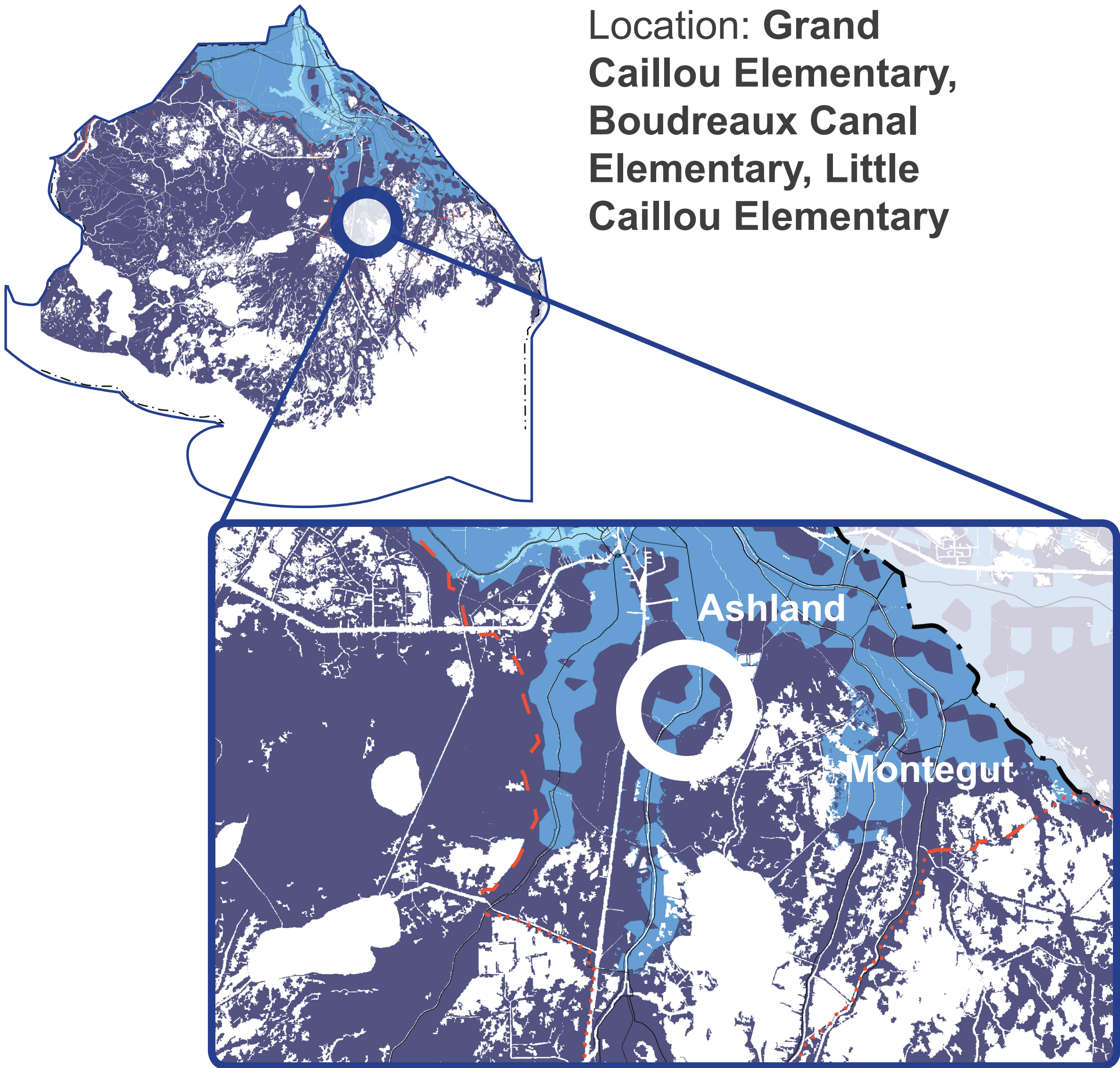
PROPOSAL

In areas projected to experience moderate future flood risk, it will be important to cluster goods and services in central locations where they will be easier to protect. In Terrebonne Parish, three abandoned elementary schools are available to repurpose in support of this goal: Grand Caillou Elementary in Dulac and Boudreaux Canal Elementary and Little Caillou Elementary Schools in Chauvin. Potential uses to support existing residents include a wetland discovery center; an ecotourism business incubator; a language cultural center and seafood processing with direct retail opportunities. Grand Caillou Elementary is adjacent to the Dulac branch library and the Grand Caillou Recreation Center, creating a centralized area for amenities and services.

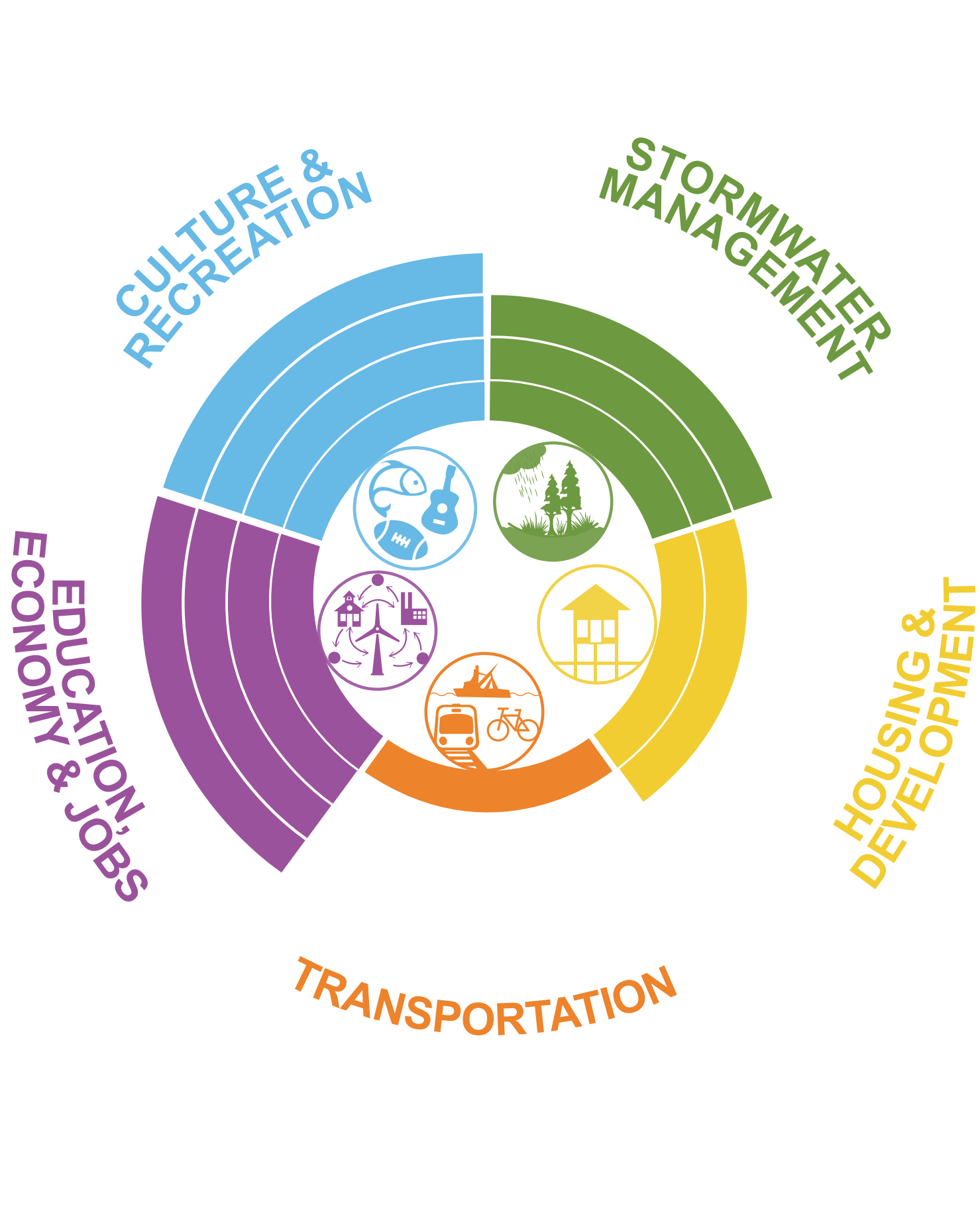
Key Info

Project Area	15 acres
LA SAFE Investment	Up to \$6 million
Estimated Project Cost	\$7.3 million
Partners	Levee District; Nonprofit Grants; Property Owner

Location: Grand Caillou Elementary, Boudreaux Canal Elementary, Little Caillou Elementary



Community Benefits



Green infrastructure on the campus will capture and slow water runoff. A wetland discovery center would educate visitors on the value of Terrebonne's wetlands and natural systems.



Provides training, services and products needed by residents and businesses.



Incubators assist business startups and retrain residents in emerging business opportunities. Support entrepreneurial spirit of residents.



Provides green space, sports fields, walking paths and habitat.

COMMENTS