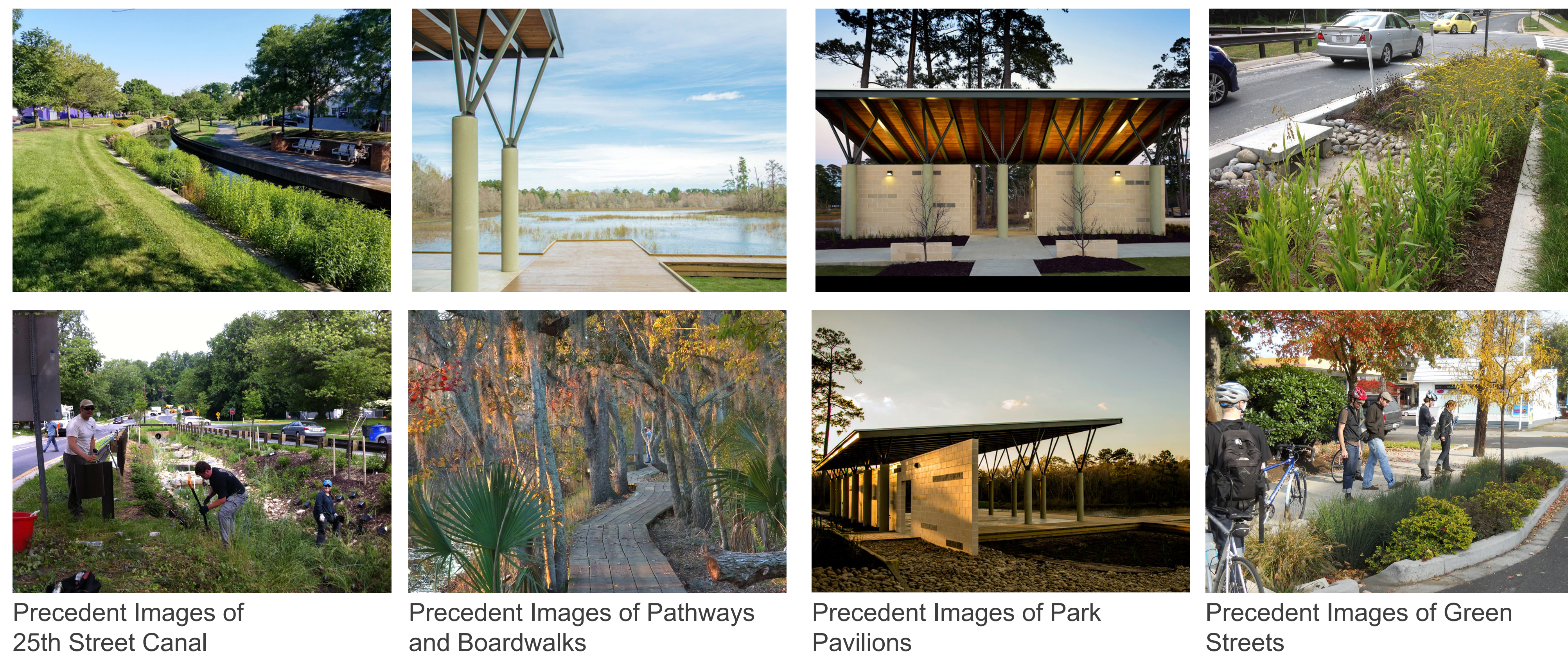
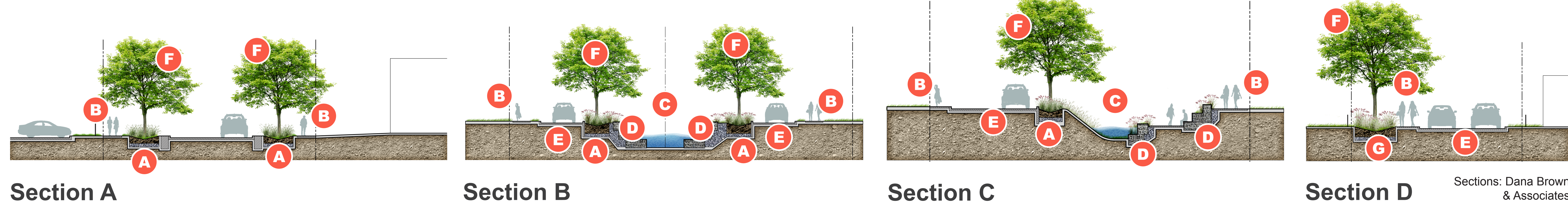


25th Street Canal Aerial View

Improvements include reconstructed roadways, bioswales, pervious crosswalks, and street trees. Canal improvements include a widened channel with stabilized canal edges.



Gretna City Park Plan



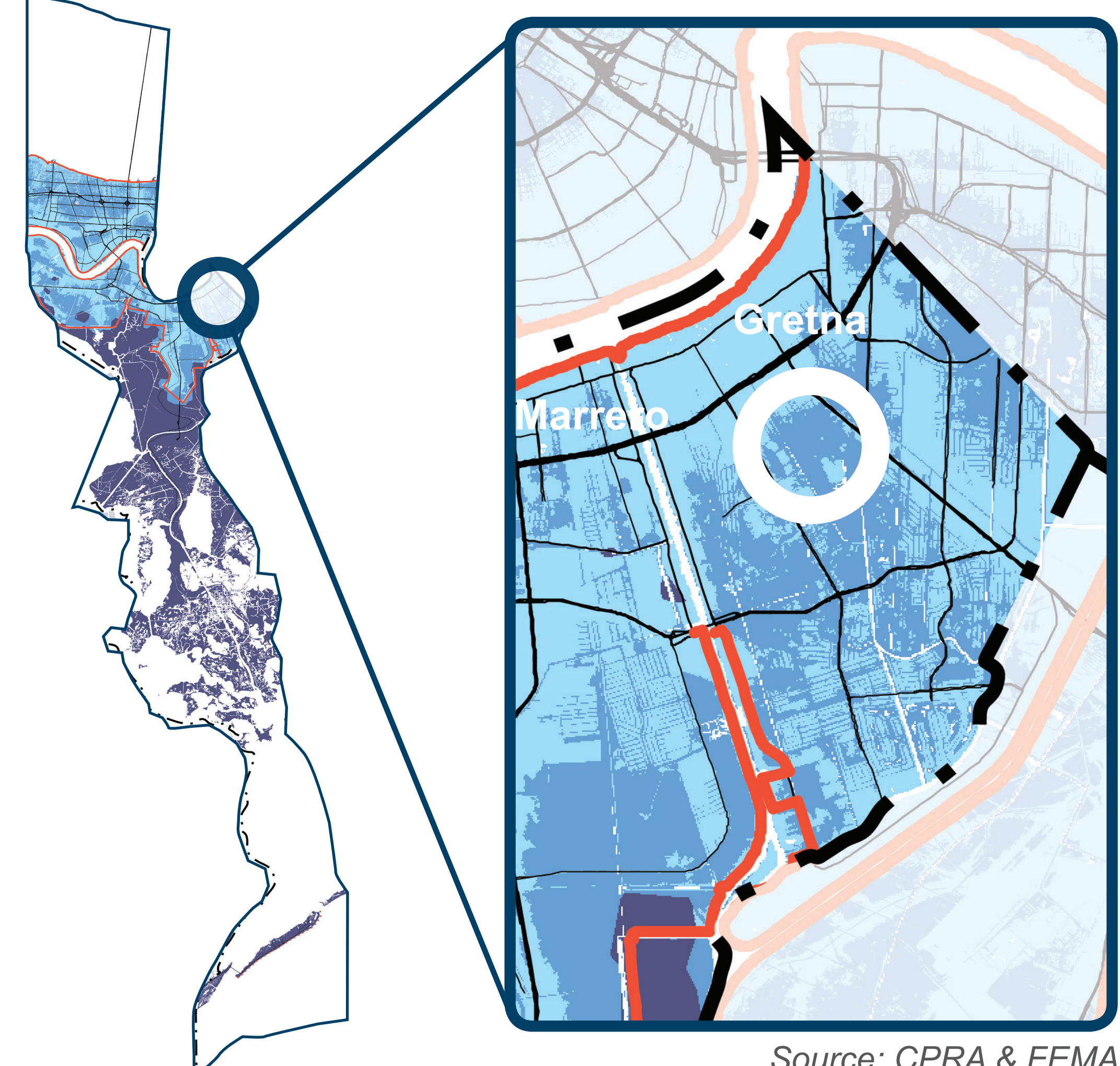
- A** 6'-0" Urban Bioswale with Trees and Native Plants
- B** 5'-0" Pedestrian Pathway
- C** Widened Canal Channel (Typ. Water Level 3'-0", Max. Water Level 7'-0")
- D** Gabion Terrace Walls as New Canal Edge
- E** Reconstruct Existing Roadway
- F** Street Trees and Native Plants in Stormwater Mangement Facilities
- G** 12'-0" Bioretention Cell

PROPOSAL

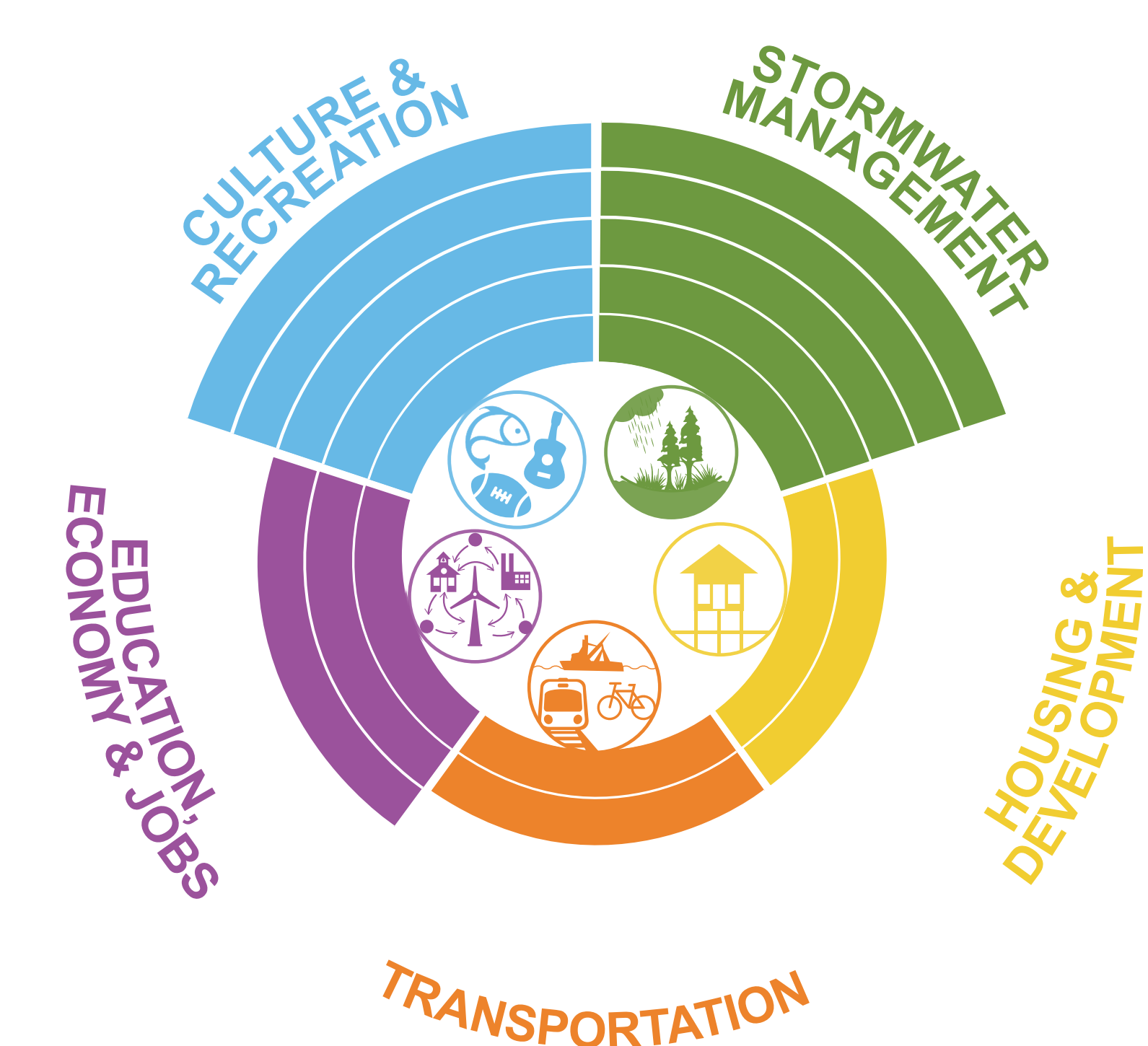
Gretna City Park and the 25th St. Canal are two major components of the Gretna Resilience District, an initiative that aims to address flood risk reduction and provide quality of life enhancements. Improvements to the park include greater stormwater retention, enhanced entryways, pathways, and signage, additional seating and pavilions, and the installation of a tiered dock that will connect visitors to the water. The canal improvements include green infrastructure features to increase capacity and conveyance of stormwater in an area with a high concentration of repetitively flooded homes and businesses. In addition, the canal enhancements include the creation of recreational amenities for biking, walking, and interactive community spaces.

Key Info

Project Area	Gretna City Park - approx. 78 acres Street & Canal - approx. 4,800 L.F.
LA SAFE Investment	Up to \$6 million
Estimated Project Cost	Gretna City Park - \$4.5M 25th Street Canal - \$3.0M Huey P. Long Ave. - \$1.4M Total (w/ design & contractor fees) - \$11.5M
Partners	FEMA (FMA, PDM); Jefferson Parish; City of Gretna; JPPSS; Tulane Regional Urban Design Center
Location	Gretna Resilience District



Community Benefits



- Stormwater Management**: Park and canal improvements to increase stormwater retention capacity and reduce flooding risk to streets, houses, schools, & businesses.
- Housing & Development**: Improves housing stock and property values by reducing flood risk and enhancing the park, encouraging development and neighborhood revitalization.
- Transportation**: Creates greater community connectivity, walkability, bikeability.
- Education & Jobs**: Educational signage and programming about stormwater management will be included in City Park and will support jobs to rent recreational equipment (kayaks, canoes, paddleboards) and manage facilities.
- Culture & Recreation**: Provides spaces for many types of recreation, increases community connectivity and access to amenities, and provides aesthetic enhancements improving quality of life.

COMMENTS