



ST. JOHN THE BAPTIST PARISH ROUND 2 MEETINGS SUMMARY



ROUND 2 MEETINGS OVERVIEW

The second round of LA SAFE meetings focused on conversations at the community scale. The team held twenty-one meetings in nineteen towns and cities across the coast. Residents at the first round of meetings chose the round 2 meeting locations. In St. John, meetings were held in Reserve, Wallace, and Pleasure Bend. Meeting at this level allowed the team to present a more in-depth view of the trends in each community, and to gather input at the community level.

In this series of community meetings, residents pinpointed challenges, proposed solutions, and collectively described a future across different types of environments and different levels of risk. The project team combined the residents' ideas and mapped their proposed strategies. The community recommendations will form the basis for the projects, programs, and policies that LA SAFE pursues going forward. The project team will review the ideas, and take into consideration current and future environmental risk, as well as best practices in planning.

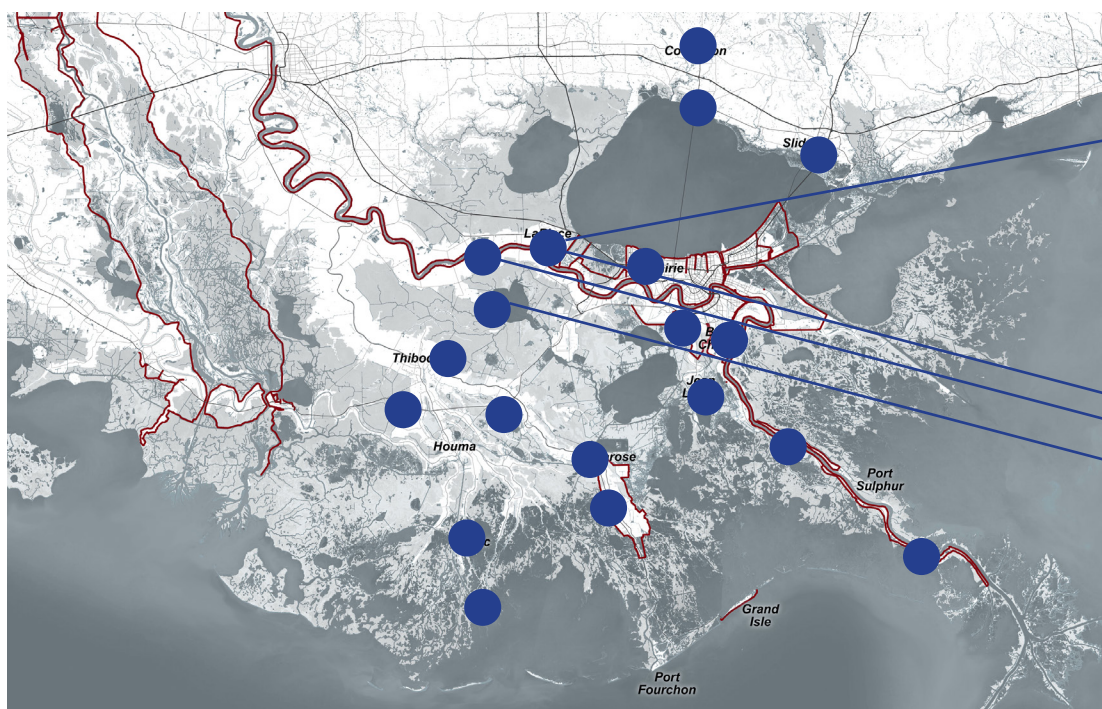


Residents at the Wallace, Edgard Meeting



Residents at the Pleasure Bend Meeting

Map of Meeting Locations



St. John Meeting Locations

- Reserve
- Wallace
- Pleasure Bend

ACTIVITY 1: MAPPING STRATEGIES

The activity included a large table map of the community that illustrated the 2067 flood risk, and a set of related question cards. Residents chose one card from each color category (shown on the right), and discussed a set of questions on the back. A table host facilitated the conversation, and a table scribe recorded it.

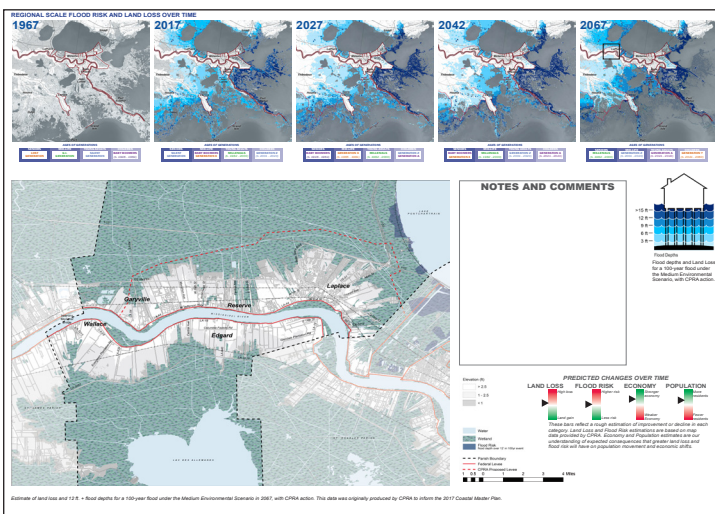
Each card had questions that related to three time periods:

- 1. Short Term (10 years):** current needs and opportunities.
- 2. Medium Term (20 years):** ways the community can adapt over time to a changing environment, economy, and population.
- 3. Long Term (50 years):** the long-term vision for the parish.

Each card prompted residents to write and draw on their maps, to show areas in need, or areas with potential for growth. The table hosts encouraged the residents to write, draw, and point out where potential projects and programs would be most successful.



- QUALITY OF LIFE
- YOUTH & EDUCATION
- CULTURE & TOURISM
- STORMWATER MANAGEMENT
- TRANSPORTATION
- PARKS & PUBLIC SPACES
- PROPERTY VALUE & COST OF LIVING
- LOCAL ECONOMIC DEVELOPMENT
- JOBS & JOB TRAINING



Activity Map used for the Garyville, Reserve, and Laplace Meeting

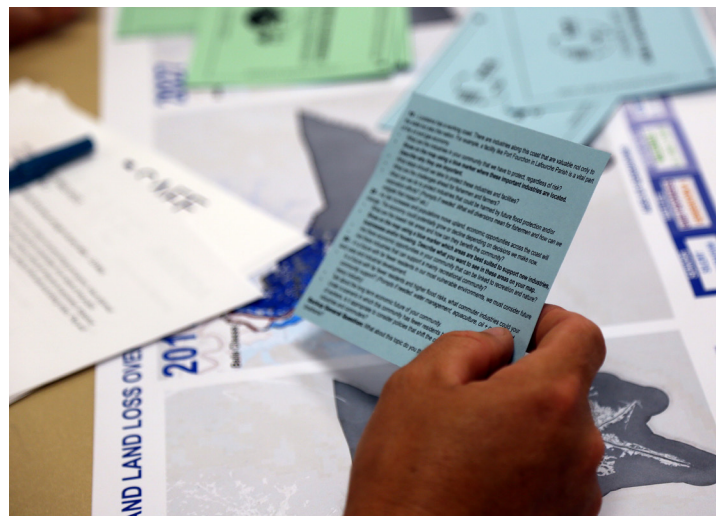
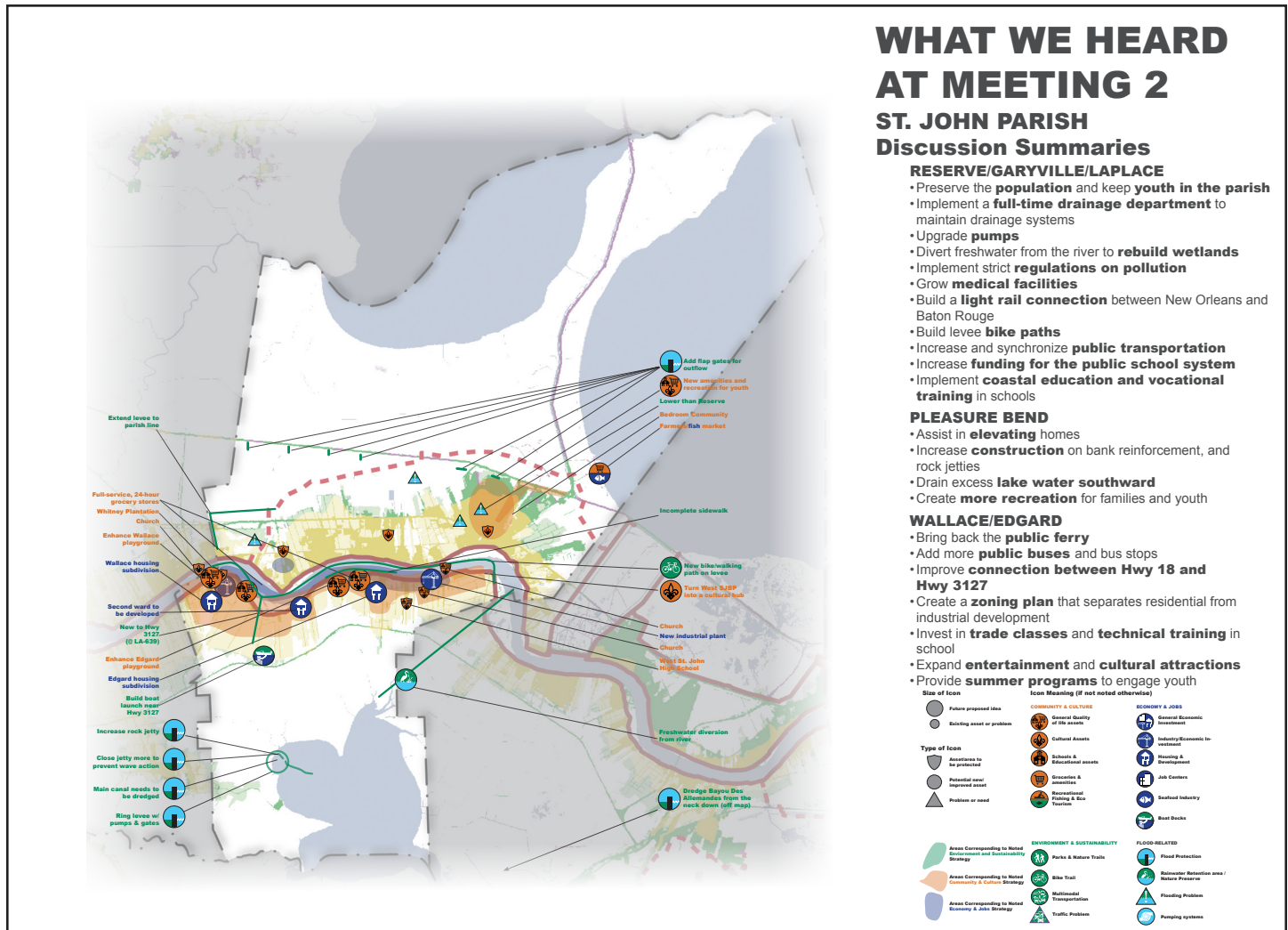


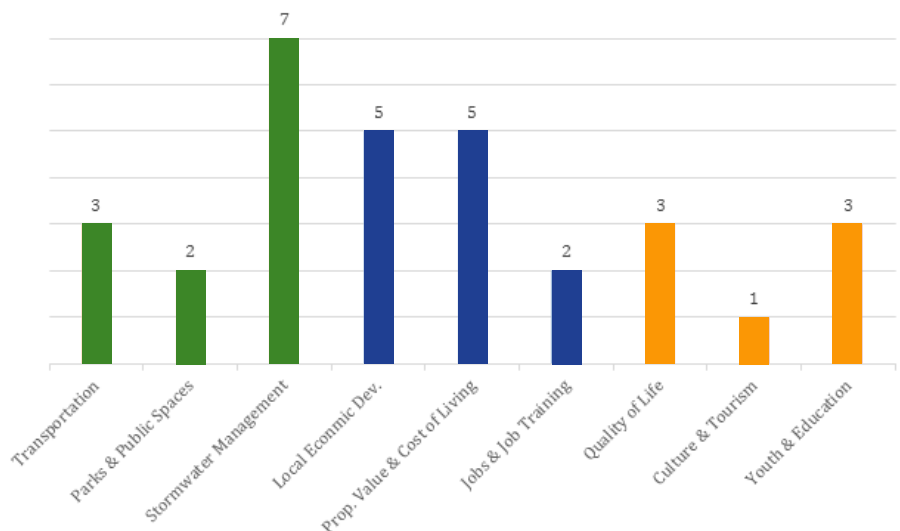
Table host reading questions from an Economy & Jobs card

MEETING RESULTS

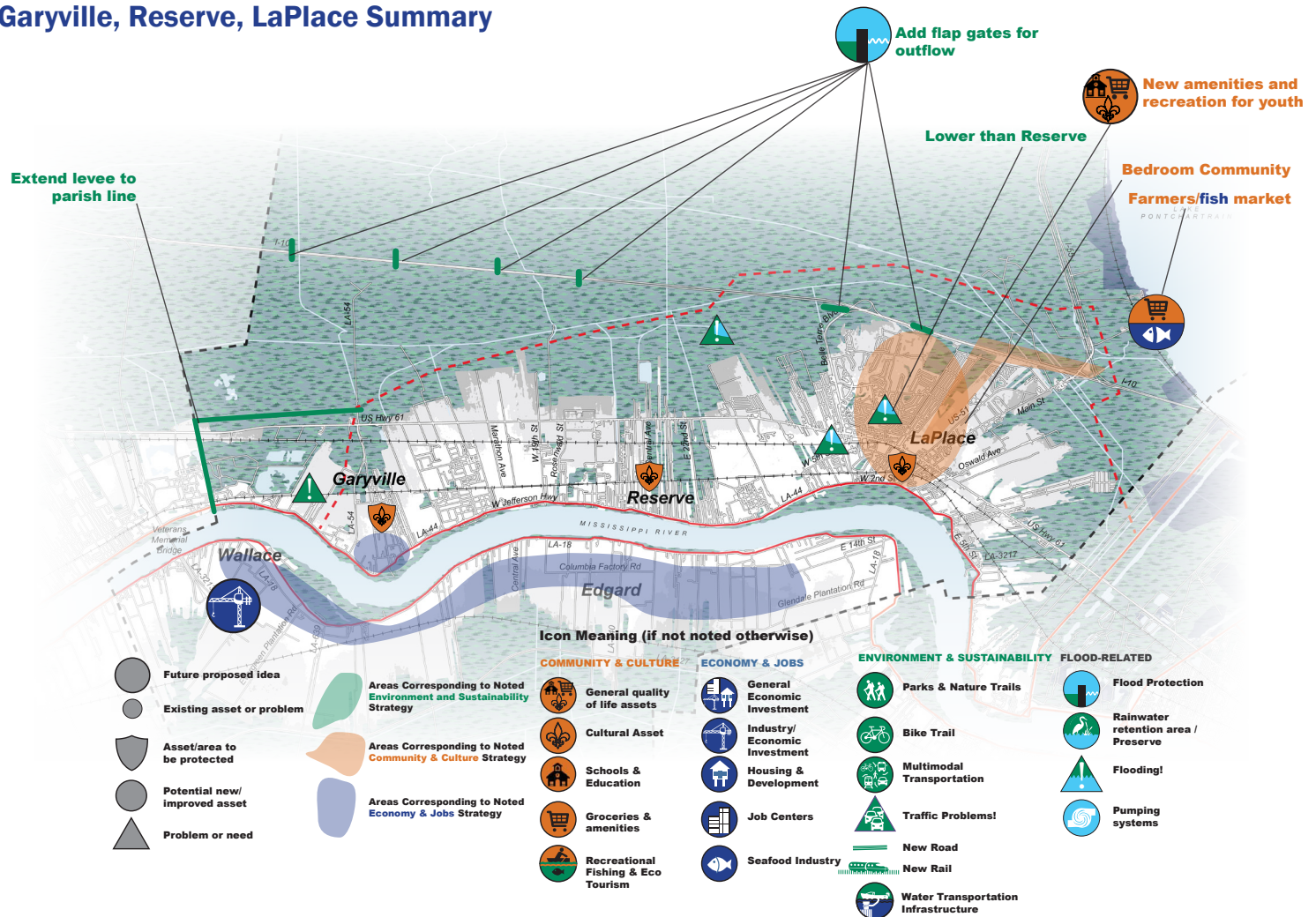
The following pages show what residents added to the maps, and contain summaries of the discussions from each of the meetings in St. John the Baptist Parish. The map below includes the results from each meeting. A larger version of this is available at LASAFE.la.gov.



Each table group chose one card from each of the three categories, if time allowed. In St. John Parish, residents chose Stormwater Management, Local Economic Development, and Property Values & Cost of Living the most frequently.



Garyville, Reserve, LaPlace Summary



Reserve meeting participants focused primarily on stormwater management and local economic development. They discussed ways to manage existing infrastructure and drainage issues, provide new career opportunities, and create a more vibrant community with more recreational and educational resources for citizens of all ages. Residents emphasized the need to preserve the population and retain youth.

Most stormwater management issues that residents discussed relate to the upkeep of the parish's current drainage system, including coordinating responsibility for cleaning culverts between the parish, the state, the railroad, and private industries to ensure that water flows as it should. One challenge the participants expressed was the overlapping responsibilities and funding constraints among the state, parish, and private landowners when it comes to mowing and maintaining ditches. One official stressed the need for a full-time drainage department to maintain the drainage system. Some residents recommended upgrading the pumps and pumping water into the river.

Participants also mentioned the need to diversify the economy. Several residents asked for cleaner industries and higher regulations for pollution. The participants further said that health services, such as medical coding and/or a birthing center, could fill a niche in the area. Residents recommended more retail and commercial options, a light rail connection to New Orleans and Baton Rouge, levee bike paths, improved public transportation, and more programs for youth.

Participants expressed concern about the public school system, stating that it is "in a financial crisis." They described students who are unable to learn and unmotivated teachers. They recommended several improvements for the school system, including a more engaging curriculum that does not just teach to the test, more competitive teacher pay, additional guidance counselors, coastal education, and vocational training. One table discussed the idea of colleges adding a major or minor related to coastal restoration and water management.

Wallace, Edgard Summary



Residents who attended the Wallace/Edgard meeting discussed ways to improve transportation and diversify the economy. Participants envisioned a future with more environmentally-friendly industries and job opportunities. Residents also expressed a need to preserve the population and retain youth. They discussed how to manage existing infrastructure and drainage issues.

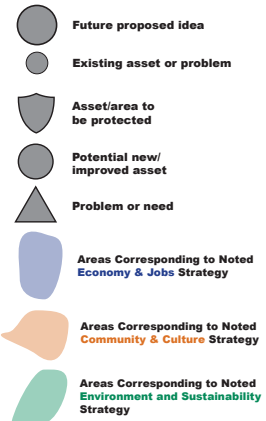
Stormwater management was a major issue. Participants recommended increasing maintenance of existing parish drainage systems as well as creating a pumping system to move water south to Lake des Allemands.

Transportation recommendations included bringing back the public ferry, adding more public buses and bus stops, creating bike lanes on the road and levee, and adding sidewalks and street lights for safe travel. Residents discussed the need for a better connection between Highways 18 and 3127.

Participants underlined the need to diversify the economy by expanding light industry, green energy, tourism, retail, and grocery stores. Several residents requested that the government limit industrial pollution. Some desired new subdivisions that can support restaurants, stores, and other amenities. One resident noted the tension between industrial plants and residential subdivisions, describing a failed effort to develop a new subdivision because of the potential that a plant was going to locate nearby.

Participants expressed interest in bringing back trade classes and technical training in schools to connect young people with local job opportunities. They suggested engaging youth with activities and career paths to help keep them in the parish.

They recommended expanding entertainment and cultural attractions, providing summer programs that build skills and empower youth to contribute to coastal issues, and aligning school curriculum with job needs in the parish. Some residents were concerned that the schools have declined in excellence over time, going from 5th in the nation to 50th.



Icon Meaning (if not noted otherwise)

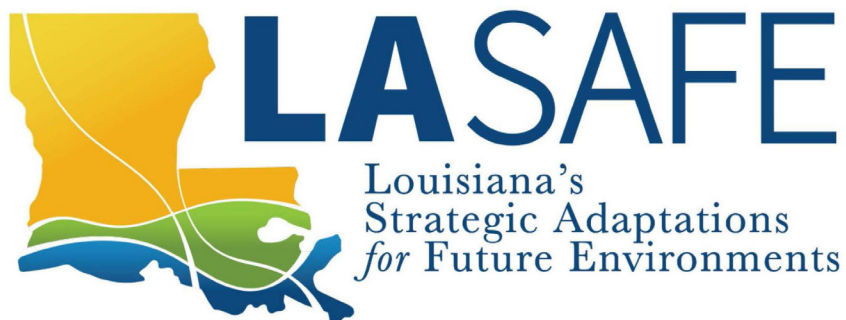
COMMUNITY & CULTURE	ECONOMY & JOBS
General quality of life assets	General Economic Investment
Cultural Asset	Industry/ Economic Investment
Schools & Education	Housing & Development
Groceries & amenities	Job Centers
Recreational Fishing & Eco Tourism	Seafood Industry

ENVIRONMENT & SUSTAINABILITY FLOOD-RELATED

Parks & Nature Trails	Flood Protection
Bike Trail	Rainwater retention area / Preserve
Multimodal Transportation	Flooding!
Traffic Problems!	Pumping systems
New Road	
New Rail	
Water Transportation Infrastructure	

NEXT STEPS

After the second round of LA SAFE meetings, the project team reviewed all of the results and conducted outreach with key stakeholders. The team designed the activities and questions for the third round of meetings based on the projects, programs, and policy recommendations from this round.



STAY CONNECTED!

Website: lasafe.la.gov
Facebook: [facebook.com/livelasafe](https://www.facebook.com/livelasafe)
Twitter: @livelasafe
Instagram: @livelasafe
Email: info@livelasafe.org

GET IN TOUCH!

LA SAFE point of contact:
St. John
 Lauren Marschall
lmarschall@cpex.org
 225.389.7197