



## JEFFERSON PARISH ROUND 1 MEETING SUMMARY





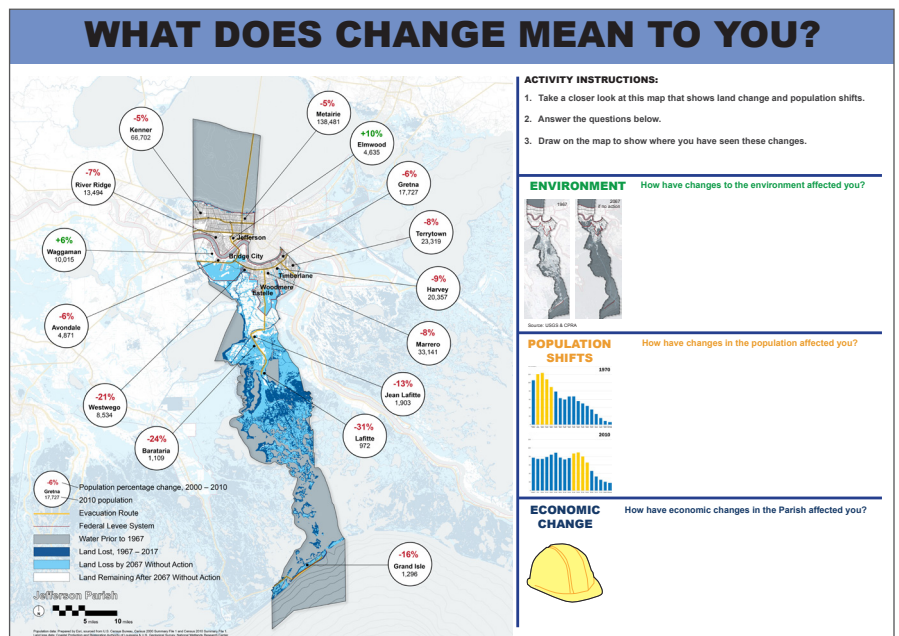
## ROUND 1 MEETINGS OVERVIEW

The first round of LA SAFE meetings kicked off the planning process. At these meetings, the project team presented data focused on land loss, flood risk, population movements, and economic change (see appendix). This information provided the groundwork for the community conversations. During these conversations, the participants discussed the goals and values that LA SAFE should pursue going forward.

The majority of the meetings centered on two small-group activities, which focused on 3 general aspects of the project: Community & Culture, Environment & Sustainability, and Economy & Jobs. The first activity asked residents to describe the changes and challenges that they have seen over the last 50 years in their communities. This activity included a map that depicted current and future land loss and population shifts between 2000 and 2010.

The second activity asked what aspects of those three categories are important to protect and preserve, and how they can be strengthened, improved, or expanded. The project team organized the feedback from this meeting into 3 categories: Strengths, Opportunities, and Challenges.

At the meeting, the residents sat at round tables. Each table group had a table host and a table scribe. The table host facilitated the conversation and helped capture the residents' ideas. The table scribe documented the conversation



Activity 1 table sheet. See appendix for larger image.  
Below: Activity 2 table sheet and residents participating.

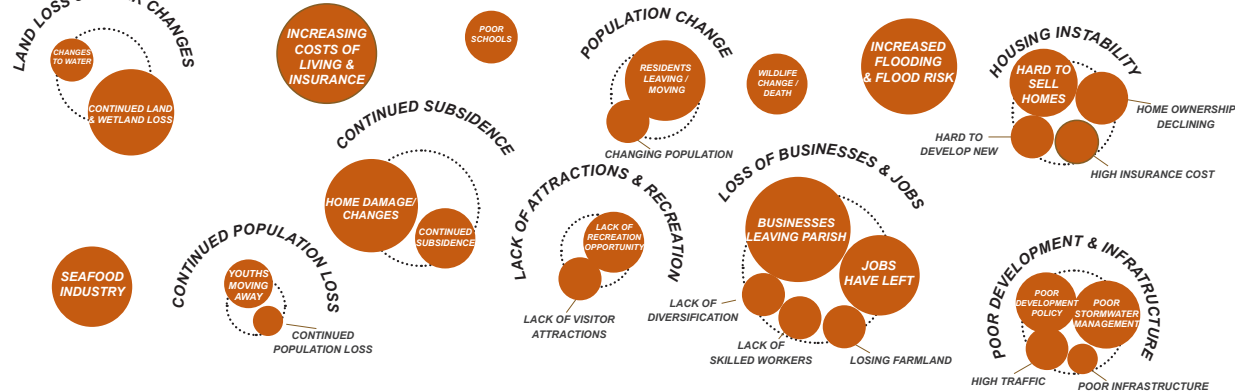


## MEETING RESULTS

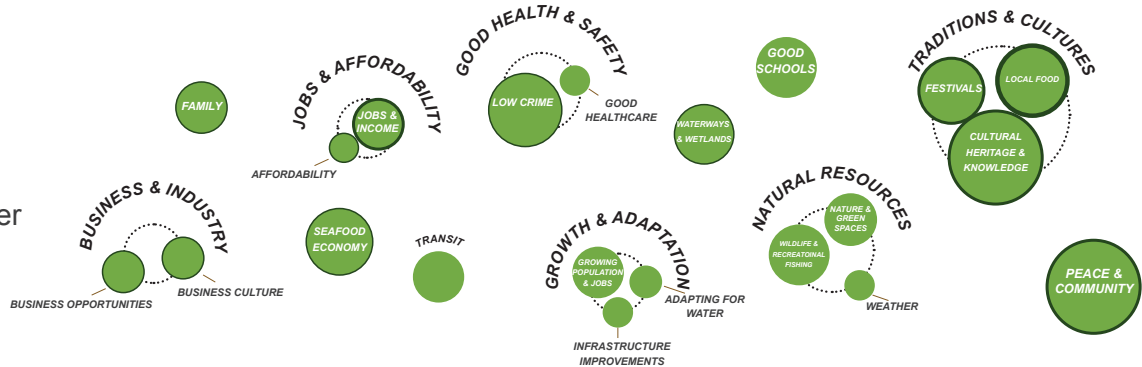
The following pages illustrate the full meeting results. The graphic on the right depicts all of the ideas grouped by similarity. The project team designed the groupings using an emergent thematic coding technique. The team grouped similar ideas into sub-groups, and then arranged the sub-groups into major categories.

The size of the circles in the graphic reflects the frequency of comments within that topic. The larger circles show the most commonly discussed topics, while the smaller circles show topics discussed less often.

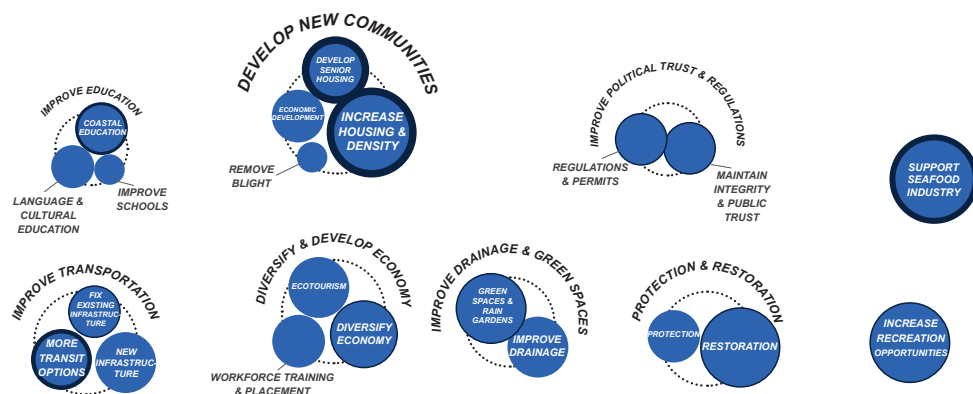
## CHALLENGES



## STRENGTHS



## OPPORTUNITIES



### KEY

These circles represent ideas collected at Community Meeting 1.



The size of the circles indicate how many people said similar things ideas.

We grouped ideas into "Subcategories" and "Major Categories" for groups of ideas are related but not the same.



Participants placed stickers on ideas that they chose to prioritize. The number of those prioritizations are shown here as line width around the circles.



# STRENGTHS

The project team transcribed all of the comments below directly from the table sheet activities at Meeting 1. Comments in bold represent the ideas that community members prioritized using sticker dots during the activity. The sizes of the subcategory circles correspond to the number of ideas within the suggestion. The subcategories are then organized under major categories, separated by dotted lines. See the key on page 18 for more information.

## TRADITIONS & CULTURES .....

### CULTURAL HERITAGE & KNOWLEDGE

- Protection of heritage.
- Local knowledge.
- Cultural knowledge.
- Indigenous knowledge.
- Unique.
- **Music.**
- Community identity within towns and coastal settlements.
- Diversity.
- **Kids return to cultural heritage.**
- Multicultural society.

### FESTIVALS

- Festivals.
- **Festivals.**
- **Parades.**
- Festivals.
- Concerts.

### LOCAL FOOD

- Food.
- Fresh seafood.
- **Louisiana seafood.**
- **Food.**
- **Seafood special.**
- Love the seafood industry/fisherman the most.

## GOOD HEALTH & SAFETY .....

### LOW CRIME

- Crime free neighborhoods.
- Crime free community.
- **Way of life is fishing and crime free.**
- Jefferson Parish Police Department.
- Low Crime.
- Low Crime.

### GOOD HEALTHCARE

- Great healthcare.

## PEACE & COMMUNITY .....

### PEACE & COMMUNITY

- Love our community for the peace and quiet.
- The people and the surrounding area.
- Lafitte is home.
- Community values.
- Small community.
- Slower living.
- Quiet, peaceful, no noise.
- Quiet and family oriented.
- Small community.
- Keeping families together.

## SEAFOOD ECONOMY .....

### SEAFOOD ECONOMY

- Water economy.
- Shrimping industry.
- **Fishing industries and shrimping.**
- Availability of commercial fishing.

## JOBS & AFFORDABILITY .....

### JOBS & INCOME

- Good paying jobs.
- **At the end of the day income is most important.**
- **Livelihood is important.**

### AFFORDABILITY

- **Insurance and affordability.**



# STRENGTHS

## GOOD SCHOOLS..... WATERWAYS & WETLANDS.....



- Good schools.
- Great educational opportunities for all children.
- Good public schools.
- Lafitte has a better public school education.



- **Something to do with the water.**
- Proximity to water.
- Love the wetlands, marshes, and swamps, create diversity.
- Love wetlands, swamps, and alligators.

## FAMILY..... TRANSIT.....

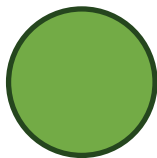


- **Family.**
- Everyone is family.
- Family traditions that created bonds in the community.



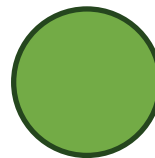
- Love the new Huey P. Long bridge.
- Public transit.
- Convenience of location to enter and exit parish.

## BUSINESS & INDUSTRY .....



**BUSINESS  
OPPORTUNITIES**

- Close to shops.
- **Mississippi River and Port of New Orleans.**



**BUSINESS CULTURE**

- Handshake economy.
- **Economic, environment, cultural, all come hand in hand.**

## GROWTH & ADAPTATION .....



- Elmwood population growing a lot post-Katrina, a lot of outsiders coming.
- Chemical plants growing.
- Tourism has grown in some local areas to replace lost jobs.



**ADAPTING FOR  
WATER**

- Lifting homes.
- Choosing to live on higher land.



**INFRASTRUCTURE  
IMPROVEMENTS**

- Fast infrastructure upgrades.

## NATURAL RESOURCES.....



- Wildlife.
- Fisheries and wildlife in our backyard.
- Fishing.
- Recreational fishing.



- Nature places to sit and enjoy outdoor walks.
- Kids love the environment.
- Family park.



**WEATHER**

- Temperature.

# OPPORTUNITIES

## DEVELOP NEW COMMUNITIES.....



- Need to build communities, not lakeside shopping center in Elmwood.
- How to attract investors for affordable houses.
- Partners with neighbor to leverage areas to grow.
- Build up rather than out.
- Prepare smaller communities north of I-10 to double population within 40 years due to population shift.
- Government should be better stewards of monies for raising homes.
- Create area that attracts young professionals to solve old housing stock.



- Housing for senior population.
- Affordable senior living.
- More senior living centers.



- Recruit new business and increase jobs.
- Another ice house in Lafitte.
- Use the bridge as a catalyst for economic development.



### REMOVE BLIGHT

- Tear down dilapidated buildings.

## RESTORATION AND PROTECTION.....



- Adapt in ways that support restoration and protection.
- Relocate landfill.
- Start with coastal restoration effects in Lafitte.
- A lot of floodgates seen in Terrebonne Parish. Bring some proactive flood projects into Jefferson.
- Oil industries canals damage lands, should have to repair.
- Invest in wetlands marsh and swamps.
- Protection levee should be built east and west to keep salt water out from Texas to Florida.



- More protection of area, if you protect south Jefferson you also protect upper Jefferson.
- Property protection.
- Close the passes.

## SUPPORT SEAFOOD INDUSTRY.....



- Make a loop in fishing economy.
- Reduce fresh water and import more seafood.
- Fishing industries.
- Seafood market in Jean Lafitte.
- Get ahold of imported shrimp impact on local price.
- More security and resilience for commercial fishing.

- No imported seafood.
- Other generation to continue shrimping and crabbing.
- We need to support local seafood restaurants by only selling local.
- Lafitte needs more tax on imported things and other seafood these imports hurt fishermen in our area.



# OPPORTUNITIES

## DEVELOP AND DIVERSIFY ECONOMY.....

### DIVERSIFY ECONOMY

- Everything grows from economy and jobs
- Help support new economies and new jobs
- Manufacturing jobs
- Maintain local businesses in coastal communities, place jobs and dollars in these areas.
- Green Jobs

### ECOTOURISM

- Creating more seafood, culture, and environmental jobs
- Local people operating tour boats
- Eco-tourism needing regulations to protect environment.
- Water based jobs and technology

### WORKFORCE TRAINING AND PLACEMENT

- Attractive high paying jobs and providing training and or educational opportunities to residents.
- Workforce training combined with job placement.
- Restoration activities which employ and train LOCALS (70006)

## IMPROVE DRAINAGE AND GREEN SPACE.....

### GREEN SPACES & RAIN GARDENS

- Green spaces that retain water.
- More rain gardens and restored wetland.
- Preserving trees.
- Green space protected.
- Maintain wildlife increase.

### IMPROVE DRAINAGE

- Better water management due to flooding
- Water management
- Better flood control, specifically getting water out rather than flood
- Better drainage

## IMPROVE TRANSPORTATION.....

### NEW INFRASTRUCTURE

- New bridge to Barataria
- New bridge Kenner bridge from Lafitte to Barataria
- Lacking infrastructure for artistic development
- Workers ability to access workplace/ environment may allow population growth
- Electric roadways

### FIX EXISTING INFRASTRUCTURE

- Fix infrastructure to manage flood so insurance rates go down.
- Infrastructure maintenance upgrade
- Need to repair bridges

### MORE TRANSIT OPTIONS

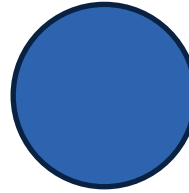
- Ferry from Lafitte to Grand Isle
- More public transportation and assisted living.
- Improve mobility and transportation
- Improve transportations

# OPPORTUNITIES

## IMPROVE POLITICAL TRUST AND REGULATIONS.....

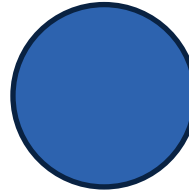


- Recreation along Canals.
- Maintain recreational opportunities
- Multifunctional infrastructure
- More recreation
- Improved water-based recreation to improve community health (70006)
- More main attractions
- More activities for children



### REGULATIONS AND PERMITS

- Regulatory controls of environment.
- Open line of communication in community regarding permits.
- Road home



### MAINTAIN INTEGRITY & PUBLIC TRUST

- Long studies ran away money and I hope this study doesn't do that.
- Stop political miscues
- More community involvement.

## IMPROVE EDUCATION.....



- Build community knowledge and capacity.
- Educational center for wetlands studies in Jean Lafitte.
- Learn to live with the water



### IMPROVE SCHOOLS

- Better public education system.



### LANGUAGE & CULTURAL EDUCATION

- Schools with English as second language
- Need better understanding of each others culture.

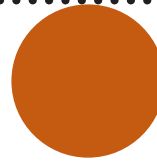


# CHALLENGES

## LOSS OF BUSINESS AND JOBS.....

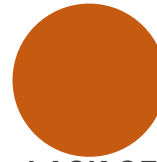


- All major companies are currently leaving or have left already.
- Wal-Mart never opened even though they bought land in the last 5+ years.
- As people move to north shore/ downtown they take dollars and business with them.
- Ship yard closed.
- Sears closed, Toys'r Us closed, K-Mart closed, no new industries.
- Economy declined after the storm.
- Avondale closing wasn't major but a lot of businesses in Jefferson.
- Longer commute for supplies since business moved away.
- More business outside parish.



### LACK OF DIVERSIFICATION

- All of income comes from the water.
- No diversification of industries.

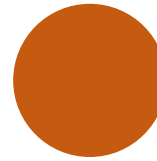


### LACK OF SKILLED WORKERS

- Having a hard time filling jobs in the oil and gas industry.
- Employees don't return after storms.



- Job opportunities have left
- Jobs.
- Less Jobs
- Major job loss.
- Decreased earnings.
- Revolving jobs.
- Loss of jobs tied to coast/ fisheries hurt communities.



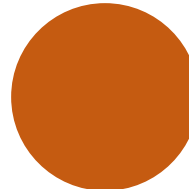
### LOSING FARMLAND

- Former farm land being developed into large home properties.
- No more farming.

## HOUSING INSTABILITY.....

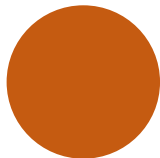


- Takes longer to sell a house.
- Harder to sell homes.
- A lot of properties are for sale. Plenty of abandoned houses.
- A lot of abandoned homes because residents can't afford to rebuild



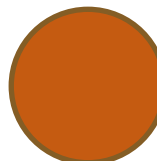
### HOME OWNERSHIP DECLINING

- More renters than home owners.
- Home owners are moving.
- More renters moving in.



### HARD TO DEVELOP NEW

- Issues with housing stock
- Not a lot of developable land for new development to entice new home owners.



### HIGH INSURANCE COST

- Insurance needs to be deregulated.
- Lower flood insurance.

## POOR SCHOOLS ..... WILDLIFE CHANGE/ DEATH.....



- Infiltration of other areas in the school system.
- Failing public schools
- Schools population increase.



### WILDLIFE CHANGE / DEATH

- Pest increase.
- Raising water killing oak trees.
- Regulations by environment with turtles, turtles weren't there 50+ years ago.
- Water is killing fruit trees and coming up the bayou

# CHALLENGES

## POOR DEVELOPMENT AND INFRASTRUCTURE.....

### POOR STORM WATER MANAGEMENT

- Lack of water management.
- Cant go to certain places due to flooding.
- Pumps are only pumping 1" of the first hour and then 1/2" there after.
- Lack of outreach and on the ground research during flood events.

### HIGH TRAFFIC

- More bad drivers.
- More people on the roads.

### POOR DEVELOPMENT POLICY

- Poorly managed growth.
- Environment is not a priority for those who made decisions in the community.
- Permits and regulations are hurting the community.
- Jefferson parish is too shortsighted with economic development.

### POOR INFRASTRUCTURE

- Failing infrastructure.

## POPULATION CHANGE .....

### RESIDENTS LEAVING / MOVING

- Residents moved because of job opportunities and to avoid flooding.
- Moved to south side for disaster related work.
- Residents leaving.
- Growth of ghost town.
- More professional people moving into Waggamen area, due to higher land area.
- Post Katrina residents left.
- Westwego used to be way more populated.

### CHANGING POPULATION

- Change of lifestyle.
- Population race and age changes.

## LACK OF ATTRACTIONS AND RECREATION.....

### LACK OF RECREATION OPPORTUNITY

- Cant fish for fun.
- No ducks for recreation.
- Less dining establishments of top end.
- No connection to nature, job centered.

### LACK OF VISITOR ATTRACTIONS

- Most people come for recreation and not to stay.
- Visitors don't stay long when visiting.

## CONTINUED POPULATION LOSS .....

### YOUTHS MOVING AWAY

- Young people don't return after college.
- Younger generations are moving out making it harder to fill jobs.
- Aging populations- lack of employees and potential employee base.

### CONTINUED POPULATION LOSS

- Fear of losing neighbor due to economic challenges.



# CHALLENGES

## INCREASED COST OF LIVING & INSURANCE .....

### INCREASING COSTS OF LIVING & INSURANCE

- **Flooding Insurance**
- Too expensive for insurance.
- Cost of home owners insurance increased greatly
- Cost of insurance.
- Building expensive homes.
- Higher flood insurance= more renters.
- Insurance companies are hurting locals because of their high prices form high water levels.
- Extra maintenance as a result of having elevated houses.
- Higher insurance rates.
- Cost of living on higher land/ neighborhoods that don't flood.
- Cost of building more than other parts of the country.

## LAND LOSS AND WATER CHANGES .....

### CONTINUED LAND & WETLAND LOSS

- Fishing ponds becoming lakes
- Greasier soil, Island getting smaller.
- Large lots, close to rivers.
- Marsh disappearing.
- Land loss.
- Climate change.
- Evasion of wetlands

### CHANGES TO WATER

- Too much fresh water is coming in.
- The water changes quality.

## SEAFOOD INDUSTRY .....

### SEAFOOD INDUSTRY

- Fishing not as good
- Fisherman need changes to water for fisherman shrimping as a way of life.
- Federal projects dating back to the 1930's have impacted fisheries
- Economically affected by the water changes hard to catch shrimp, soft shell crabs.
- People are selling out from fish and shrimping industry
- Have pumping station is polluting fishing waters
- Coastline changes and diversions have changed fisheries.

## INCREASED FLOODING & FLOOD RISK .....

### INCREASED FLOODING & FLOOD RISK

- Home is flooding more easily since 1985
- Recent flooding.
- Flooding
- Rising water levels.
- Tide rise more flooding.
- Where is this water coming form and what is in the water?
- Flooding
- Coast washing away and flooding homes.
- Surrounding streets are not so I still get stuck in flooding. Cement is crumbling.
- Living with uncertainty of when the next inevitable flood will occur.

# CHALLENGES

## CONTINUED SUBSIDENCE .....

### HOME DAMAGE/ CHANGES

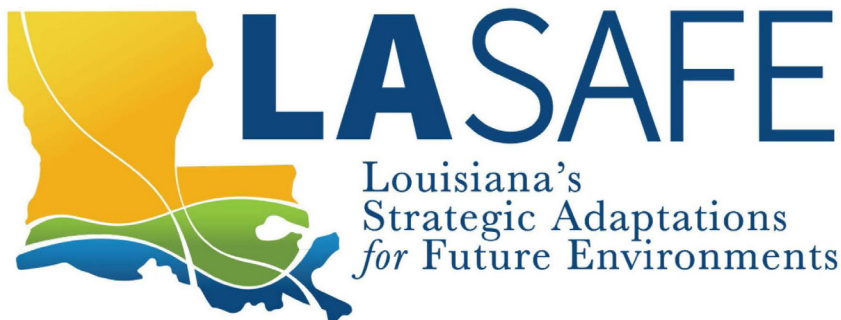
- Every 5-6 months pipes are getting done.
- Cracking foundation.
- The lower it sinks the more difficult it is to fix things.
- Front yard sinking.
- Backyard sidewalk and driveway sinking.
- Homes have been built more in Waggaman, LA on slab
- Every 5-6 months pipes are getting done.
- Over regulation with erosion.
- Home owners are not able to protect their own land because its against regulation.
- Cement is crumbling, drainage issues.
- Property value is going down.

### CONTINUED SUBSIDENCE

- No subsidence.
- Ground constantly sinking.
- Subsidence issues.
- Roads and sidewalks are getting worse, cracks and holes not leveled.

## APPENDIX

The appendix follows this page. It includes maps and graphs shown during the first Jefferson Parish LA SAFE meeting. The appendix illustrates land loss, flood risk, population shifts, and economic activity in the parish. Larger examples of the table sheets used at the meeting follow the maps and graphs.



## STAY CONNECTED!

**Website:** [lasafe.la.gov](http://lasafe.la.gov)  
**Facebook:** [facebook.com/livelasafe](https://www.facebook.com/livelasafe)  
**Twitter:** @livelasafe  
**Instagram:** @livelasafe  
**Email:** [info@livelasafe.org](mailto:info@livelasafe.org)

## GET IN TOUCH!

**LA SAFE point of contact:**  
**Jefferson Parish**  
 Seth Magden  
[smagden@gcrincorporated.com](mailto:smagden@gcrincorporated.com)  
 504.304.0706



LAND LOSS OVER TIME

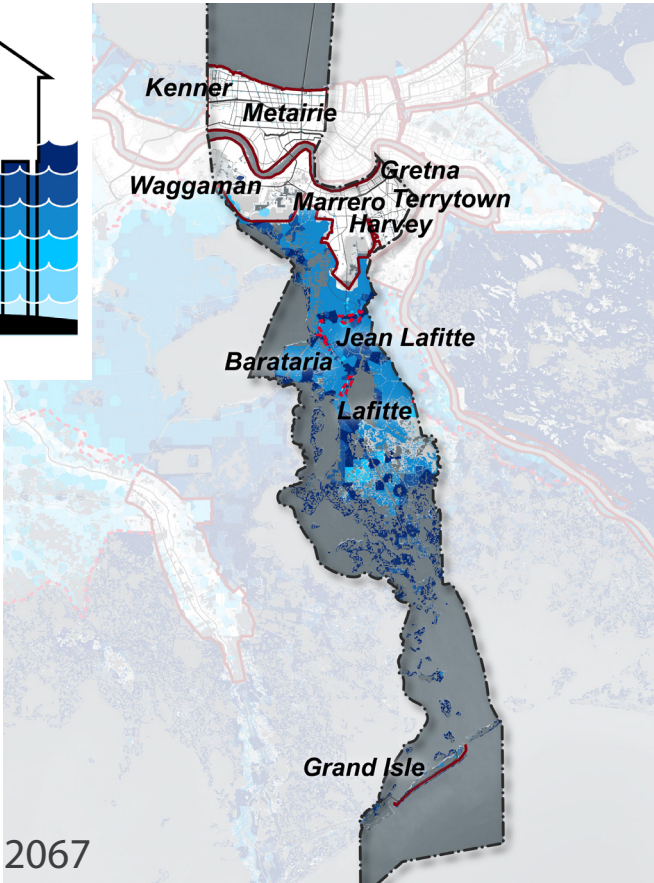
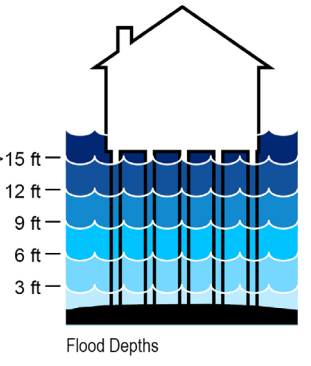
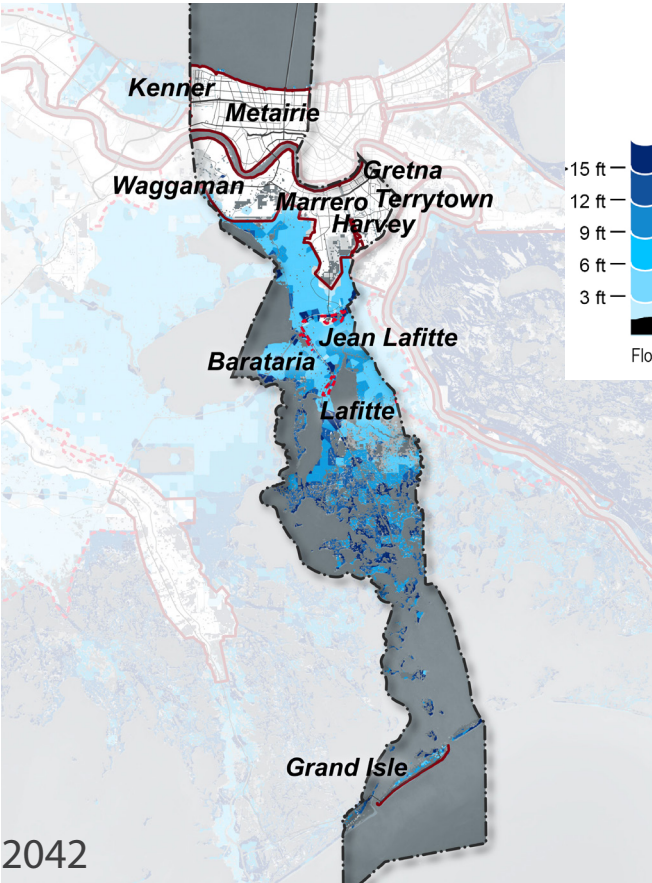
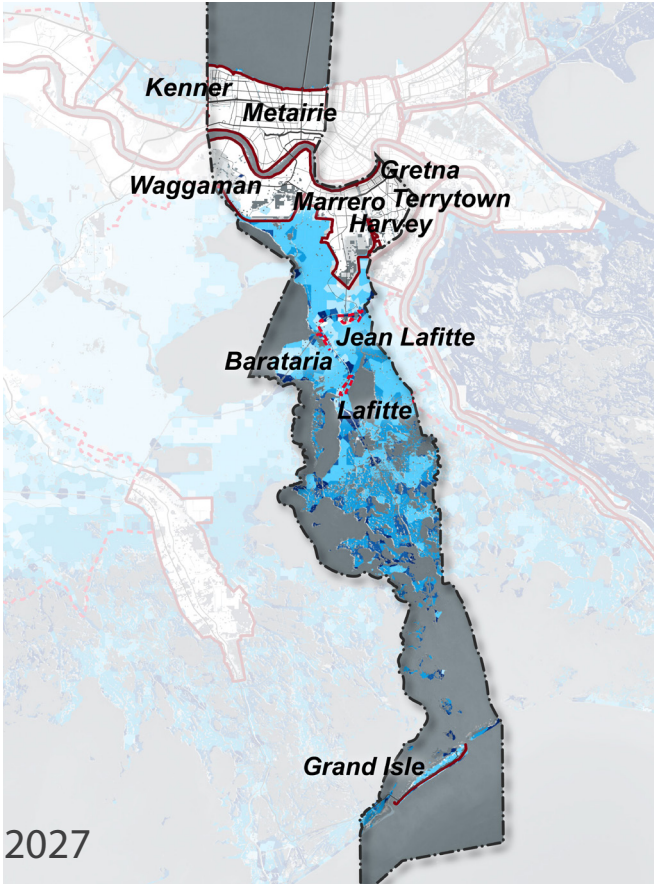
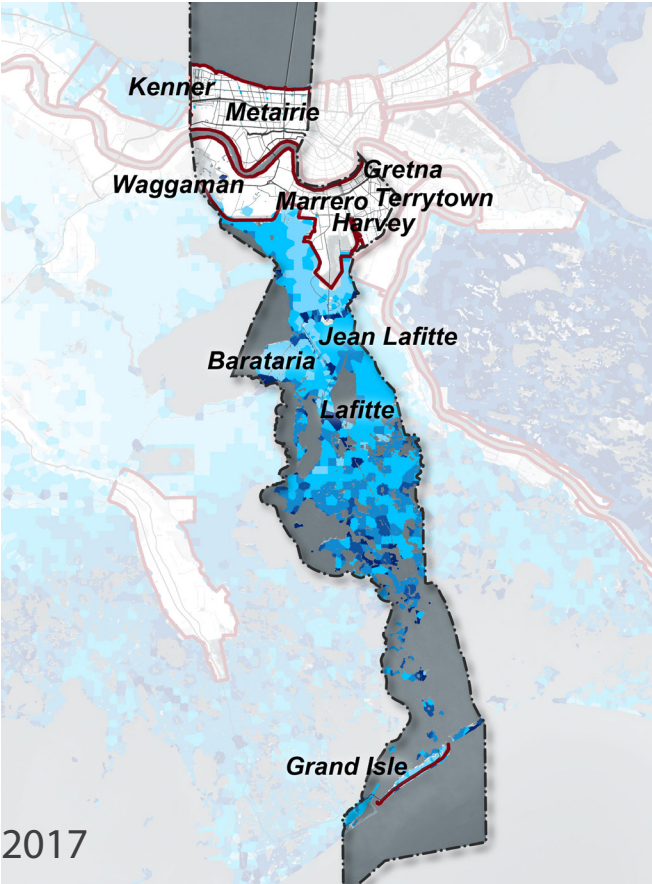


This data was provided by CPRA and were originally produced to inform the development of the 2017 Coastal Master Plan.



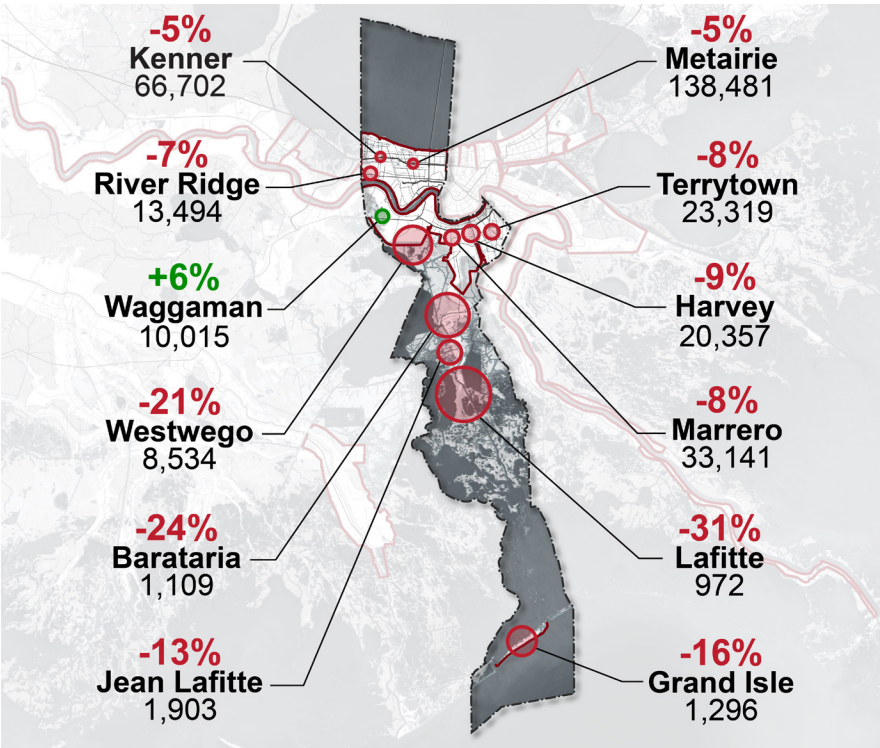
**FLOOD RISK**

All shown with Coastal Master Plan



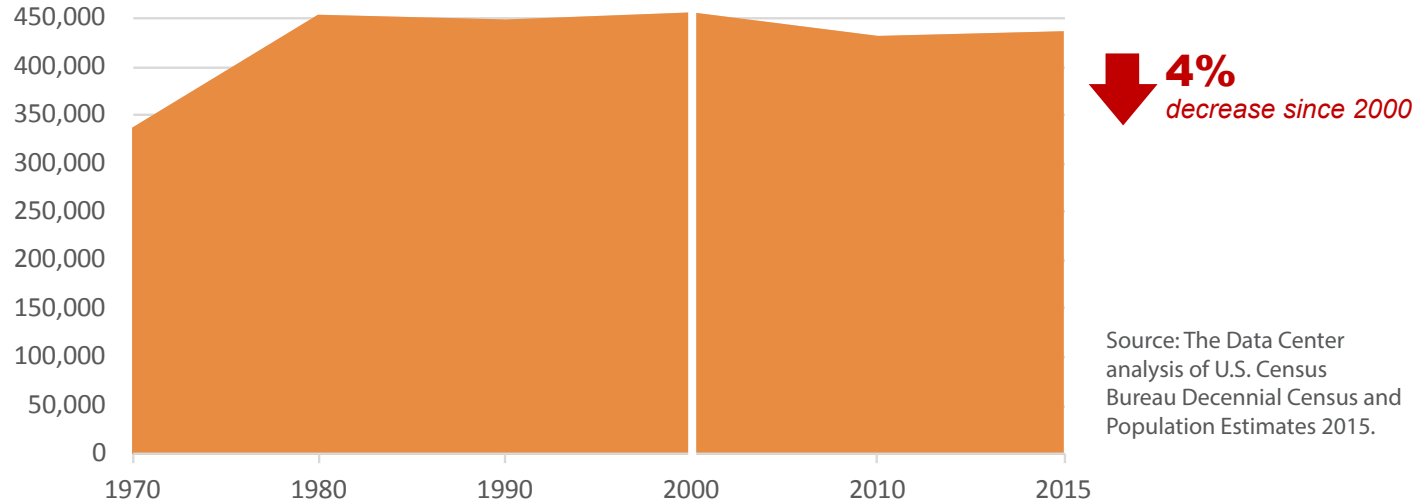
This data was provided by CPRA and were originally produced to inform the development of the 2017 Coastal Master Plan.

**POPULATION CHANGES  
IN JEFFERSON  
COMMUNITIES  
2000-2010**



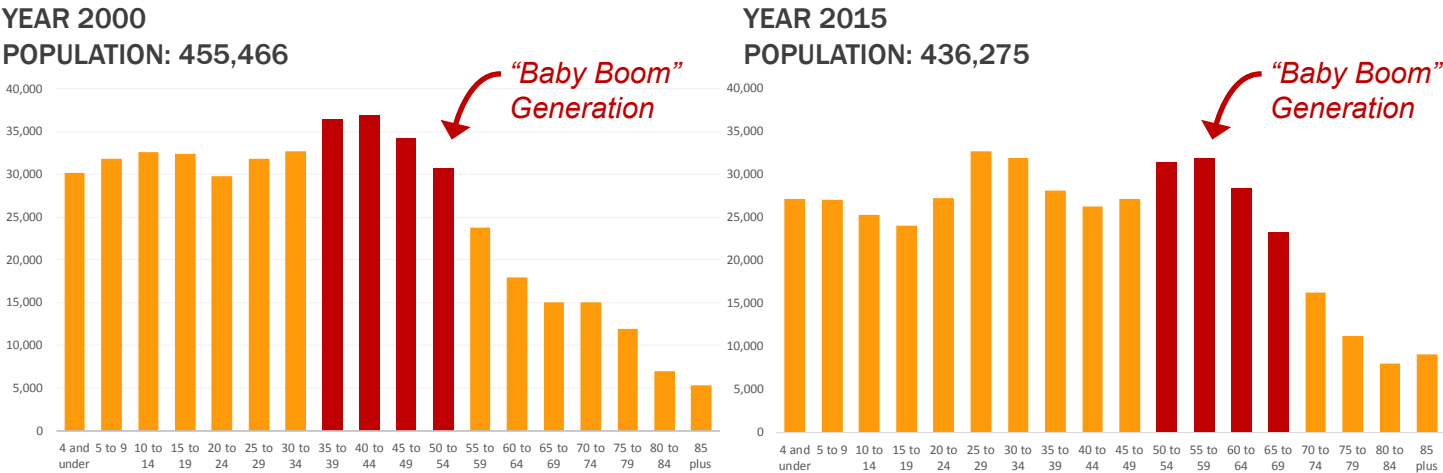
Data prepared by ESRI, sourced from U.S. Census Bureau, Census 2000 Summary File 1 and Census 2010 Summary File 1.

**POPULATION CHANGE SINCE 1970**



Source: The Data Center analysis of U.S. Census Bureau Decennial Census and Population Estimates 2015.

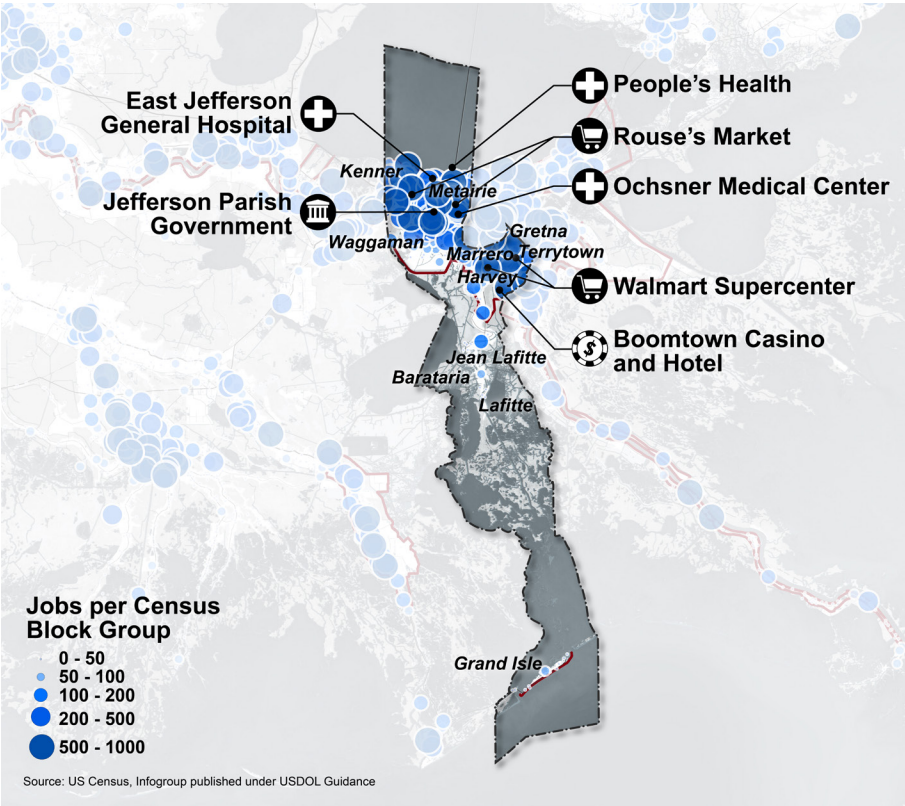
**POPULATION BY AGE, 2000 - 2015**



Source: The Data Center analysis of U.S. Census Bureau data from the decennial census.



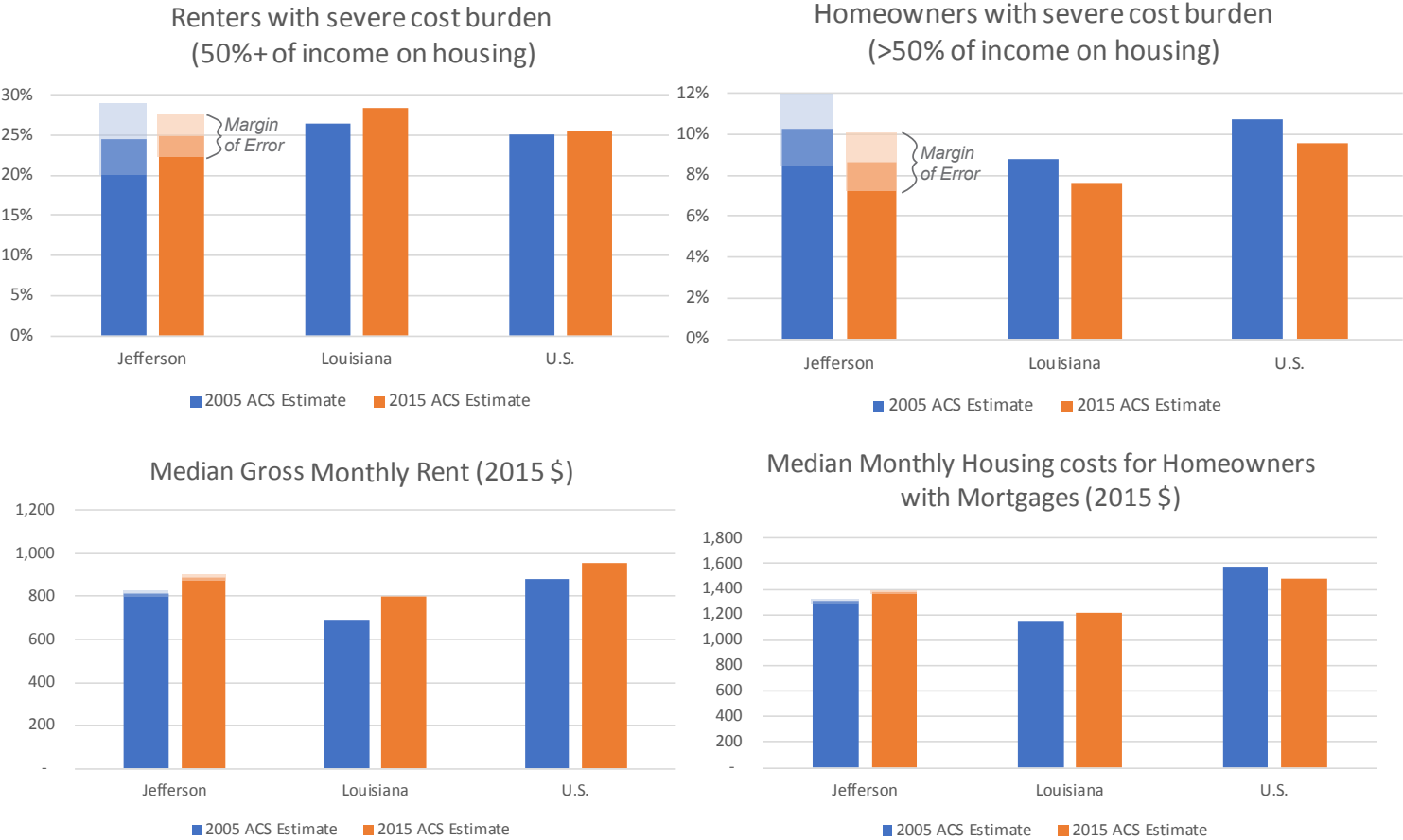
MAJOR EMPLOYMENT CENTERS



Source: US Census, Infogroup published under USDOL Guidance

HOUSING TRENDS IN JEFFERSON PARISH

Source: The Data Center Analysis of U.S. Census Data; Notes: Estimates of % Owner Occupied Housing for Plaquemines and St. John the Baptist are from 2015 ACS Supplemental Estimates. Estimates from a range of years (2006-2010 or 2011-2015) represent an average across the listed years.



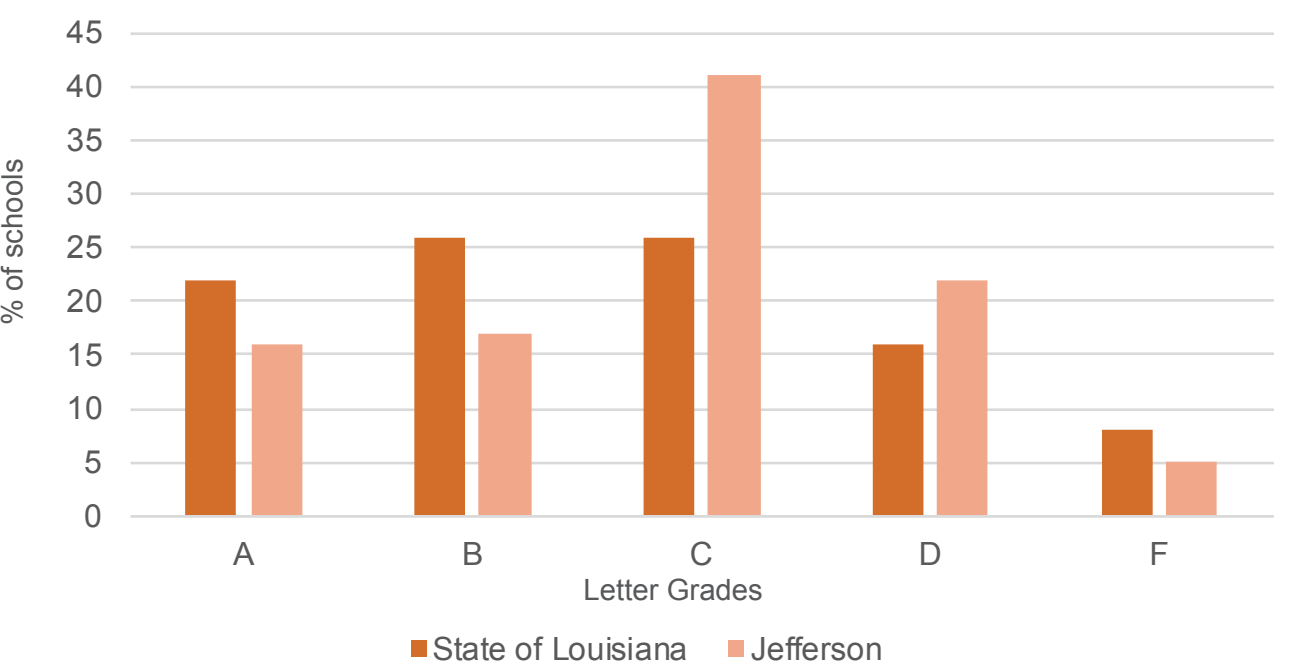
Source: The Data Center analysis of U.S. Census Bureau data from the decennial census.



**PARISH SCHOOL PERFORMANCE**

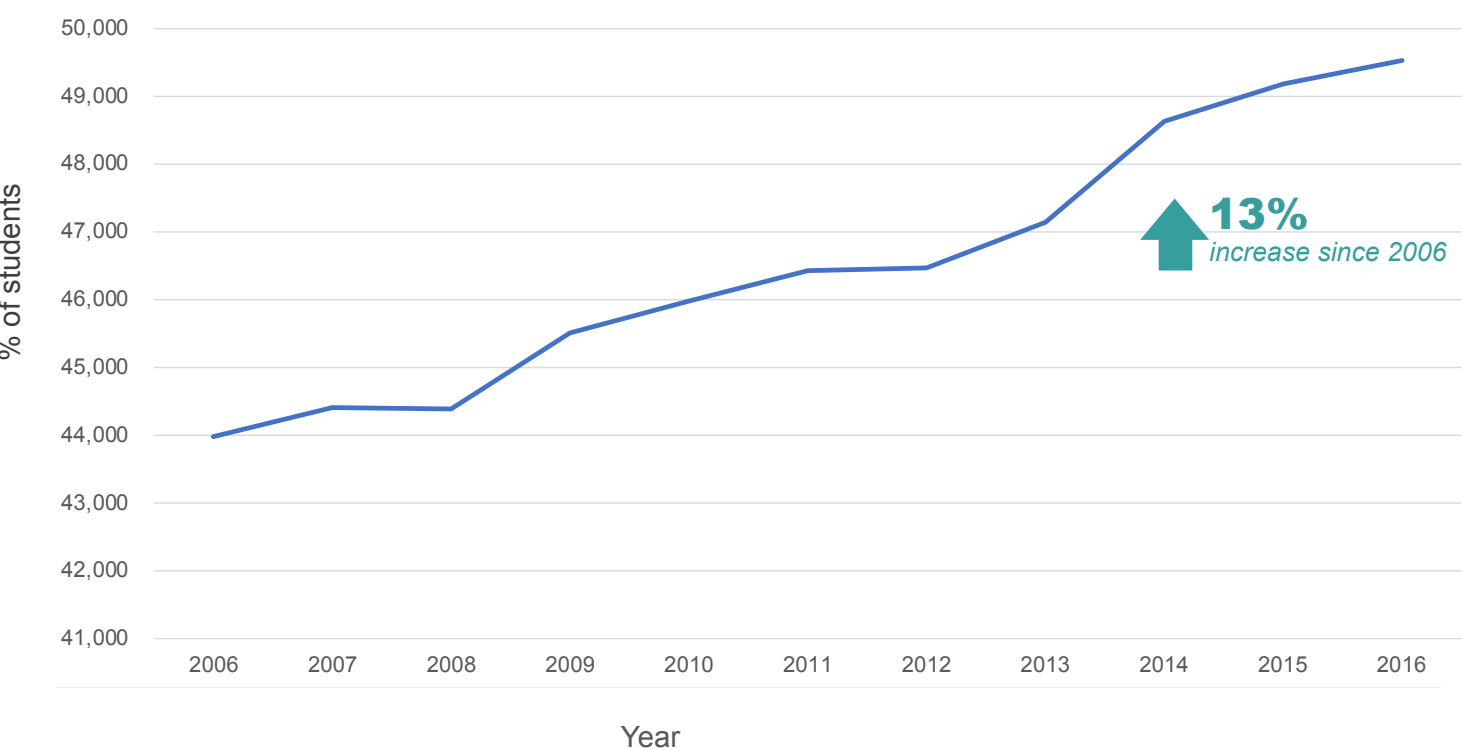
**2015-2016 District Report Card**

Source: Concordia analysis of "2015-2016 School District Report Cards," Accessed April 2017, <http://www.louisianabelieves.com/data/reportcards/2016/>



**PARISH SCHOOL ENROLLMENT**

Source: Data Center analysis of "Multiple Statistics By Site For Total Reported Students" Tables from the Louisiana Department of Education, Accessed April 2017, <http://www.louisianabelieves.com/resources/library/enrollment-counts>



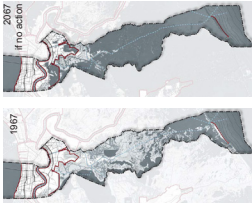
**ACTIVITY 1 TABLE SHEET**  
(originally 36"x48")

**WHAT DOES CHANGE MEAN TO YOU?**

**ACTIVITY INSTRUCTIONS:**

- 1. Take a closer look at this map that shows land change and population shifts.
- 2. Answer the questions below.
- 3. Draw on the map to show where you have seen these changes.

**ENVIRONMENT** How have changes to the environment affected you?



Source: USGS & CPRA

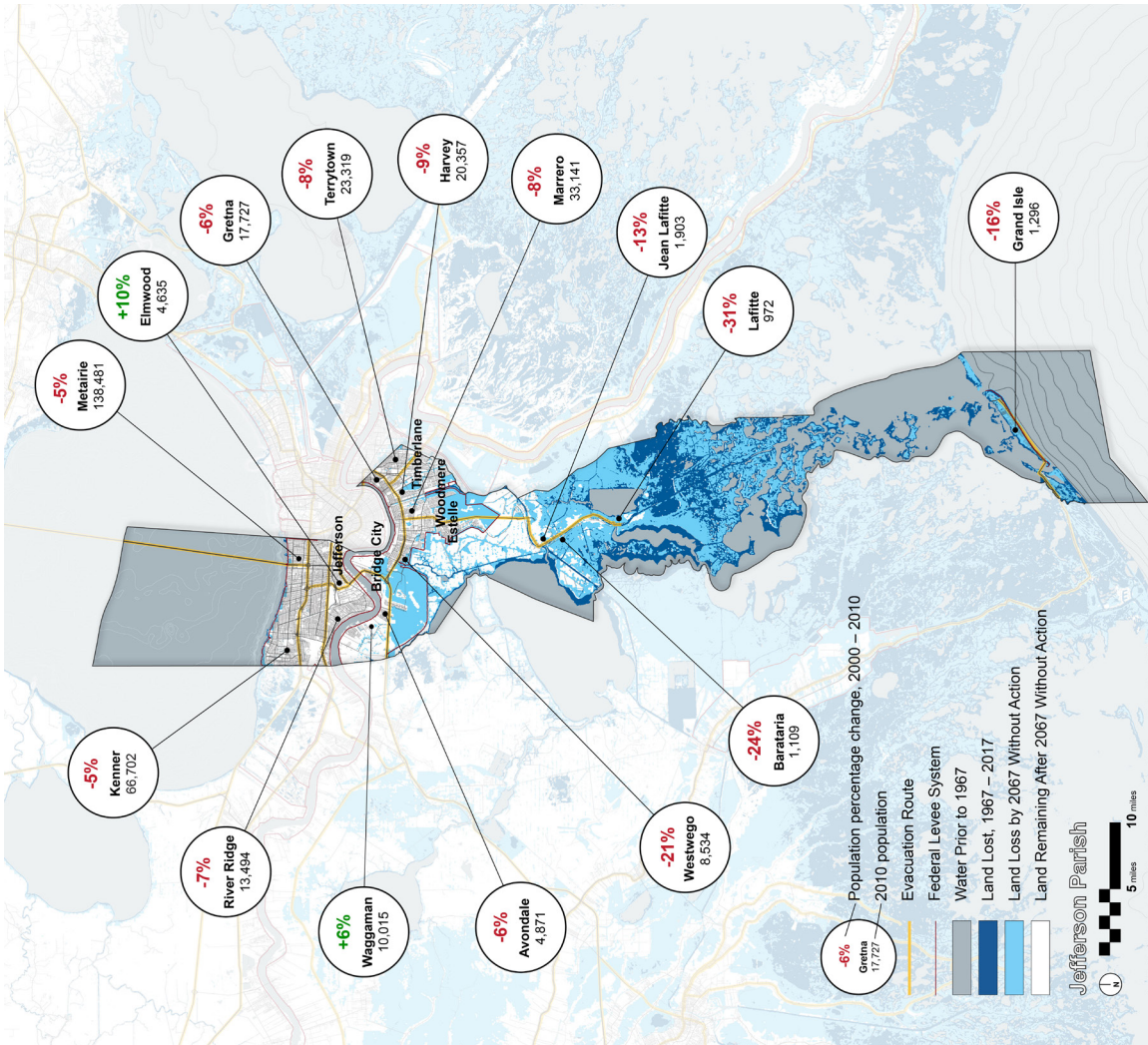
**POPULATION** How have changes in the population affected you?

**SHIFTS**



**ECONOMIC** How have economic changes in the Parish affected you?

**CHANGE**



**ACTIVITY 2 TABLE SHEET**

(originally 36"x48")

# ADAPTATION GOALS

*Tell us what adaptation goals are most important to you.*

The outer circle is for you to list what you value in the Parish.

The inner circle is for you to list what you think future goals should be.

1. Write your ideas on Post-it notes and place them on the sheet. Include your zip code on your ideas.
2. As a group, choose your top 10 favorite ideas, and place stickers on them.

