



## ***ST. JOHN THE BAPTIST PARISH MEETINGS 4 & 5 SUMMARY***



## MEETING 4 OVERVIEW

In October, LA SAFE conducted two types of meetings in St. John Parish: round table discussions with parish officials and community open houses.

The LA SAFE team met with leaders and potential partners at the city and parish level in order to learn how the proposed projects could align with existing related efforts. This also helped the team identify potential hurdles in implementing certain projects, so they could plan with those obstacles in mind.

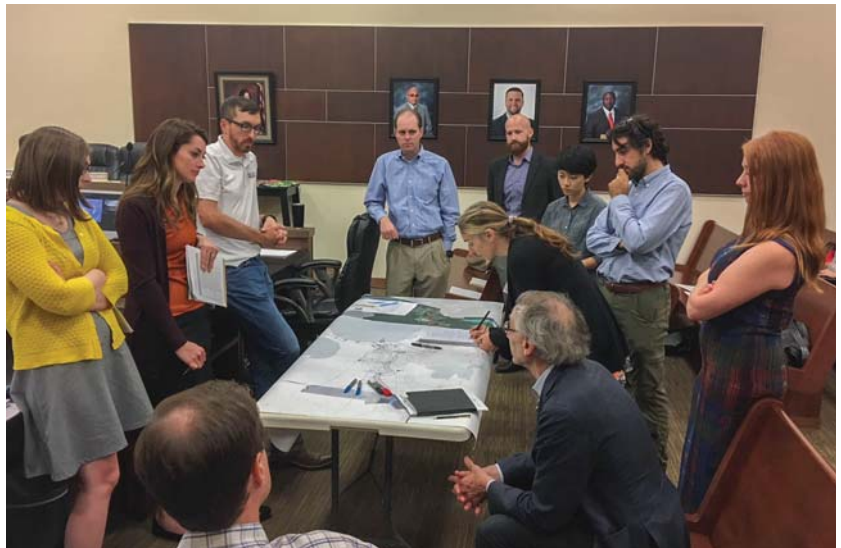
These same project and program updates were shared with community members at the Andouille Festival, where LA SAFE hosted an informational tent and surveyed residents for their thoughts on the proposal ideas. These events and meetings provided the opportunity for residents and the project team to discuss ideas one-on-one. Meetings in Round 4 helped hone the ideas residents generated in the previous three rounds of meetings into final proposals to be evaluated during Round 5.

### Round 4 Meeting Events in St. John

- Stakeholders & Parish Staff Round Table  
Tuesday 10.03.17
- Andouille Festival  
Saturday 10.14.17
- West Bank Civic Association  
Tuesday 11.07.17



Andouille Festival



Stakeholders Round Table



West Bank Civic Association

## MEETING 5 OVERVIEW

In the fifth and final round of meetings, residents reviewed six potential demonstration proposals for their parish, and voted for their preferred projects at a polling station. The meeting was a gallery-style exhibit with boards set up around the room, so that the residents could understand the LA SAFE process. The boards included a summary of previous meetings; future flood risk, land loss and subsidence maps; a 50-year vision map for the parish; and a policy proposal board that covered a range of issues expressed by residents in earlier meetings.

Demonstration proposal boards (shown in the Appendix) illustrated six different projects and programs that LA SAFE could fund. The boards included detailed descriptions, concept drawings and example images along with information on cost, location, area, and potential partners to give residents an idea of each project. Each proposal highlighted multiple community benefits, using the five categories that emerged in the previous meetings: Culture & Recreation, Stormwater Management, Housing & Development, Transportation, and Education, Economy & Jobs. This provided residents with a complete understanding of each project, in order to help them decide on their preferred proposals.



*Resident at the Vision board*



*Meeting 5 participants casting their preferences for the six demonstration proposals*



*Unveiling the poll results*

## MEETING 5 PROPOSALS

Below are summary descriptions of each of the 6 demonstration proposals that residents evaluated at the meeting. The full description of all these proposals can be found in the appendix.



### A AIRLINE & MAIN COMPLETE STREETS

This proposal will add green stormwater management infrastructure, sidewalks, native plantings and historic light poles and banners to planned improvements on Airline Highway and Main Street. These complete street designs aim to attract reinvestment in these commercial corridors, reduce flooding and improve safety.



### B DUBOURG CANAL PARK

This proposal will include an improved canal with enhanced drainage, a linear park and trail system that connects Fairway Drive to Dominican Drive. The improvements will provide better drainage and serve as an educational and recreational hub for the community.



### C MIXED-USE HOUSING DEVELOPMENT

This proposal will fund a development of approximately 30 housing units and 10,000 sf of commercial space in either LaPlace or Garyville, providing a model for mixed use development in low risk areas. The development will include shared green space that doubles as stormwater management infrastructure and may serve as Phase 1 of a larger neighborhood master plan.



### D EDGARD COMMUNITY CENTER & SHELTER

This proposal funds the design, permitting and site preparation for a multi-service community center on the West Bank to meet the needs of a growing population in the area. The community center will incorporate energy-efficient design and best stormwater management practices. It may include facilities for community events, sports, arts and crafts, a commercial kitchen or a health clinic and will also serve as a hurricane shelter.



### E HISTORIC/CULTURAL DISTRICTS & GREEN STREETS

Louisiana's unique culture and history are major attractions for visitors and residents alike. This proposal promotes St. John's four historical districts to attract new residents, businesses and tourists. It also increases walkability in the districts by improving sidewalks, adding additional lighting and planting native vegetation to beautify the streets and increase stormwater management capacity.



### F LAPLACE MULTI-MODAL TRANSIT STATION

This proposal will develop a multi-modal transit station in downtown LaPlace, linking roads, trails, bus routes and eventually the proposed commuter rail line between Baton Rouge and New Orleans. It will also include retail opportunities and flexible space for community events that can double as a disaster shelter during emergencies.

## COMMENTS AND FEEDBACK

Residents left comments and feedback on the boards describing what they liked and disliked about each proposal. A summary of their feedback is below. All of the comments gathered are in the appendix.

### A: AIRLINE & MAIN COMPLETE STREETS

Stakeholders enjoyed the stormwater management aspects of this proposal. They commented that the design would improve safety and encourage pedestrian activity. However, there was a concern that it puts the interests of businesses before residents.

### B: DUBOURG CANAL PARK

Residents commented that the proposal promoted education and active recreation, which they saw as a good way to attract and retain younger populations in the area. Stakeholders also liked the enhanced drainage capacity in the canal. There was a suggestion that the canal still maintain the ability for dredging in the future

*“[Dubourg Canal Park] is my 1st choice. I love how it is promoting education along with recreation, which is where I see encouragement for youth to stay. Love the drainage ideas also.”*

### C: MIXED-USE HOUSING DEVELOPMENT

Residents commented that this proposal was well located for expanded development in the future. They enjoyed the fact that there would be added commercial space, but commented that they would prefer more than 30 housing units.

*- St. John Parish Resident*

### D: EDGARD COMMUNITY CENTER & SHELTER

Stakeholders liked that the proposals included the West Bank in the plan. There was some concern that the center might be underutilized, as the majority of residents on the West Bank are used to commuting east, and that the East Bank residents would not feel the need to come over to the west.

### E: HISTORIC/CULTURAL DISTRICTS & GREEN STREETS

Residents liked that the proposal incorporated increased green space and historical markers. Stakeholders wanted to be sure there would be historically accurate descriptions of how the parish was originally developed.

### F: LAPLACE MULTI-MODAL TRANSIT STATION

Residents viewed multi-modal transportation positively, but were concerned with the urbanization involved in transitioning from a small town to a larger city.

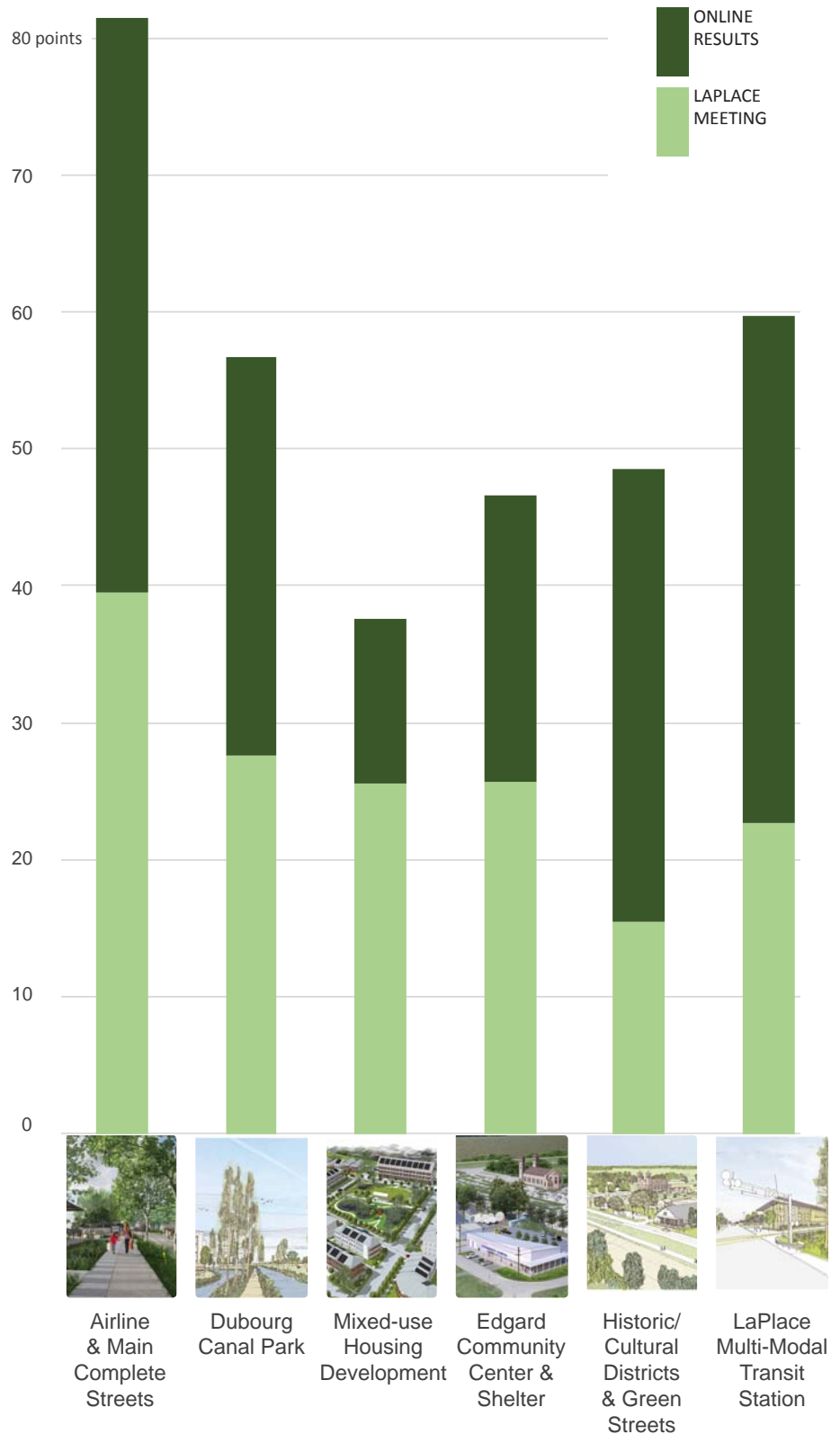
## MEETING 5 POLLING

After reviewing all of the 6 proposals, residents visited the polling station and reviewed the proposal selection criteria, which includes public preference as one of the six components. Residents were given tokens to mark their preference for each of the six proposals. They used their two gold tokens to select their favorite two proposals; green tokens for their 3rd and 4th favorite proposals, and blue tokens for their least favorite proposals. Gold tokens were worth two points, green tokens were worth 1 point and blue tokens were worth 0 points.

At the end of the evening, the results of the polling were revealed, giving the participants a general idea of the outcome. In order to make the polling accessible to residents throughout the parish, and to minimize geographic bias, residents not at the meeting could access an online poll for 3 weeks following the meeting.

The St. John the Baptist Parish meeting was held on Monday, December 11th at LaPlace Elementary School. Thirty- six residents and stakeholders signed in and participated. Following this meeting, an online poll collected preference input from 29 additional residents. The graph on the right shows the results of the preference polling.

### POLLING RESULTS



## PROPOSAL SELECTION

Both the public preference results from Round 5 and the online poll will inform the proposal selection. Public preference is one of the six scoring criteria that the project team will use to select proposals for funding. The LA SAFE team will announce the proposal selection in the first quarter of 2018, when the LA SAFE planning document is released.

**1. Public Preference** - The result of the meeting preference polling and an online poll.

**2. Leverage Funds** - The level of matching funds from other sources.

**3. LMI Benefit** - Points awarded to projects that benefit low-to-moderate income populations.

**4. Public Benefit (Quantitative)** - The level of benefit to the public that can be measured. For example, the number of units created in a housing proposal, or the amount of water stored in a stormwater management proposal.

**5. Public Benefit (Qualitative)** - The degree to which the project addresses future flood risk in a unique way and/or improves quality of life for residents.

**6. CRS Score** - Awarded to projects that gain points in FEMA's Community Rating System (CRS), which utilizes floodplain management planning to lower flood insurance rates.



*Proposal descriptions and voting tokens*



*Residents casting their preference*

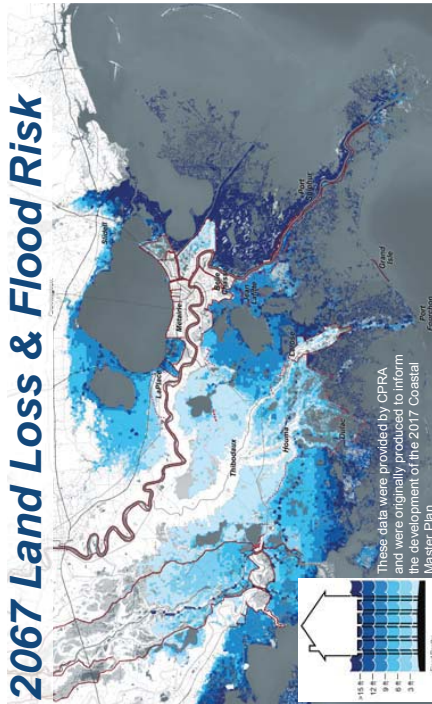
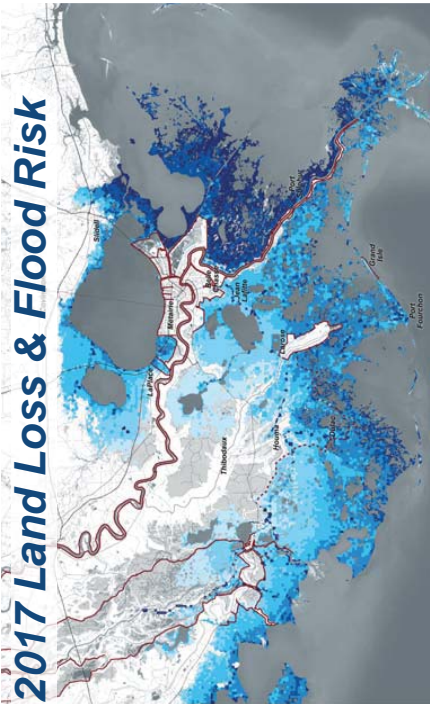


*A resident writing a comment*

## APPENDIX

The following pages contain additional materials produced for the meetings, as well as comments gathered at the meetings.

MEETING 4 INFORMATIONAL BOARDS



LA SAFE OVERVIEW

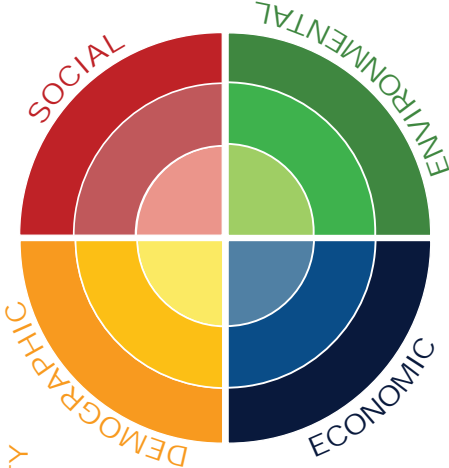
LA SAFE is an approach to planning for future risk, using planning expertise, science, and community input to envision the future of southeast Louisiana. When the plan is complete, we will begin implementation with pilot projects to demonstrate adaptive strategies that will help decrease flood risk for the Louisiana coast.

HOLISTIC APPROACH

Increasing flood risks and environmental challenges lead to changes in population, culture, economy, and education. To address these challenges, we are collecting data and perspectives to find adaptation strategies that can provide multiple benefits across community life.

.....  
SOCIAL VULNERABILITY  
POPULATION SHIFTS  
AGE + DIVERSITY  
HOUSING  
INCOME

HEALTH + SAFETY  
ORGANIZATIONS  
EDUCATION  
CULTURE  
POLITICS



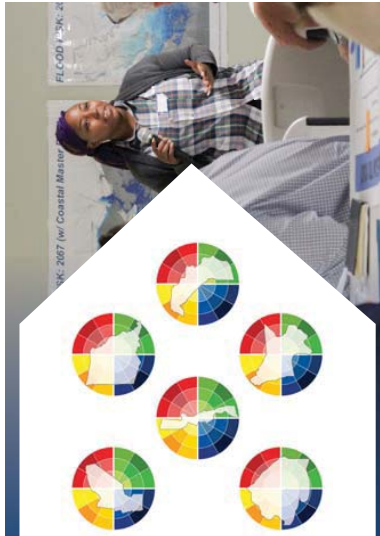
TAX BASE  
REAL ESTATE  
JOBS + INDUSTRY  
FISHING + FARMING  
COMPUTER PATTERNS

POLLUTION  
SUBSIDENCE  
LAND CHANGE  
SEA LEVEL RISE  
HABITATS + RISK

CONNECTING LOCAL TO REGIONAL

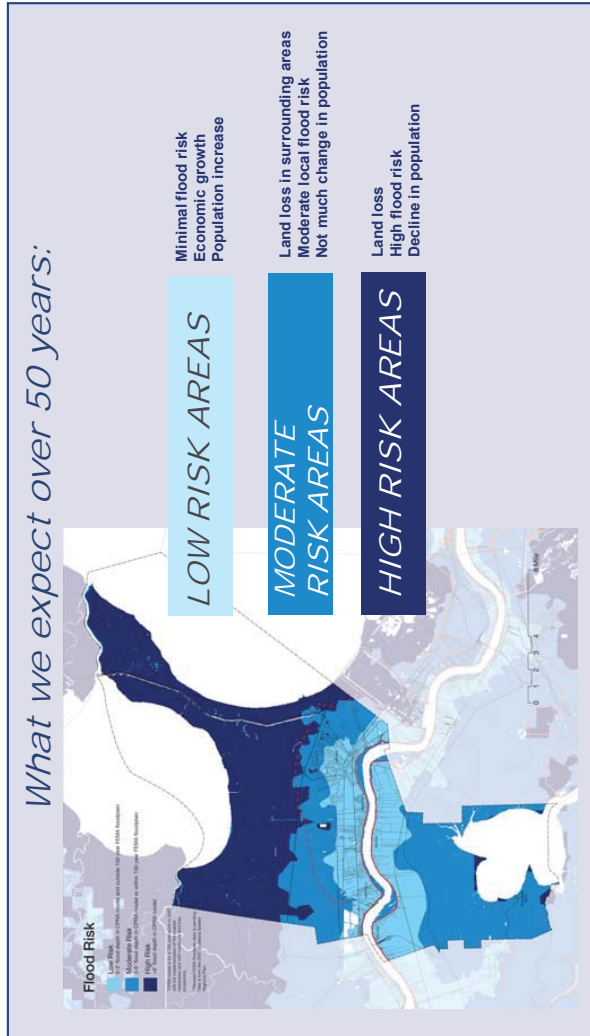
The six LA SAFE parishes - Jefferson, Lafourche, Plaquemines, St. John the Baptist, and Terrebonne - will develop plans that include programs, policies, and projects to support southeast Louisiana communities over the next 50 years.

So far, more than 1,500 residents discussed issues related to stormwater management, transportation, and development policy that affect their communities. Through this process, local, regional, and state-scale solutions emerged as well as ways for governments to coordinate across political boundaries.



# BIG PICTURE VISION

A 50-YEAR VISION FOR ST. JOHN THE BAPTIST PARISH AND ITS DIFFERENT RISK AREAS



## VISIONING AROUND RISK

### Low Risk: Growth and Community Character

Continue to make areas with higher ground and lower risk ready for growth by providing denser residential and commercial development, increased transportation options, improved stormwater management, and more green spaces.



### Moderate Risk: Protect and Preserve

In moderate risk areas, help current communities and cultures safeguard their way of life and at the same time adapt to changing dynamics. Provide elevated transportation routes, improved stormwater management, safe elevated housing, new industries and jobs, grocery stores, health services, and recreational spaces.



### High Risk: Recreation and Tourism

In the sparsely populated high risk areas of the parish, encourage expanded recreational, ecotourism, and fishing industries.



## PARISHWIDE VISION

Welcome to St. John the Baptist Parish in 2067! We make our parish great by:

1. Managing water to reduce flooding risk;
2. Building community character to attract and retain people of all ages by supporting a healthy environment and expanded recreational and education opportunities;
3. Enhancing mobility and transportation options;
4. Diversifying the economy and enhancing workforce training opportunities;
5. Encouraging growth in low-risk areas; and
6. Providing a variety of housing types.

VISIT US ONLINE

[lasafe.la.gov](http://lasafe.la.gov)

@livelasafe



WHAT DO YOU THINK?

PLEASE FILL OUT A SURVEY SHEET WITH YOUR COMMENTS!



# EXAMPLE ADAPTATION STRATEGIES

POSSIBLE PROJECTS, PROGRAMS, AND POLICIES TO IMPLEMENT THE LA SAFE VISION FOR ST. JOHN THE BAPTIST PARISH

## REDUCE FLOOD RISK BY MANAGING STORMWATER

Parishwide  
All Risk Zones

*Use water as an asset and reduce future flood risk*

- Create a parishwide stormwater management plan
- Build weirs on canals to raise water level and develop canals as waterfront amenities
- Use a large forested area as a stormwater storage park and create park paths that connect people to public spaces
- Sustain hydrology between future levee and I-10 to fight future subsidence



Wally Pontiff Park in Metairie, LA, is a public park that also manages stormwater



A New Orleans canal and a rendering of the same canal with amenities - pedestrian path, seating, and trees.

VISIT US ONLINE  
[lasafe.la.gov](http://lasafe.la.gov)  
[@livelasafe](https://twitter.com/livelasafe)  


## HELP FUND ALREADY-PLANNED COMPLETE STREETS PROJECTS

Airline Highway and Historic Main Street, LaPlace  
Low Risk Zones

*Increase quality of life by improving streets*

- Fund the design of the Airline Highway Streetscape Improvement Plan between Belle Terre Blvd. and Main St.
- Fund historic Main Street improvements:
  - Add sidewalks
  - Create bike lanes separated from car lanes
  - Add parallel parking
  - Shorten street-crossing distances for walkers
  - Connect to Mississippi River levee trail



A proposed design for Airline Highway (US HWY 61) between Belle Terre Blvd. and Main St. The image shows a street with a proposed design for a complete street, including sidewalks, bike lanes, and a pedestrian path.



A proposed design for Main Street in LaPlace, LA, showing a street with a proposed design for a complete street, including sidewalks, bike lanes, and a pedestrian path.

## FUND COMMUNITY CENTERS ON THE WEST BANK

Edgard and Pleasure Bend  
Low Risk Zones

*Improve places where people gather*

- Fund the renovation or rebuilding of the Westbank Community Center in Edgard
- Make improvements to the Pleasure Bend fire station to create a community center



Interior of the Westbank Community Center in Edgard, showing a large room with tables and chairs, illustrating a community center.

Yoga at the Mel Ott Recreation Center



Meeting room at Little Calhou Volunteer Fire Department, Chauvin, LA

WHAT DO YOU THINK?

PLEASE FILL OUT A SURVEY SHEET WITH YOUR COMMENTS!



# EXAMPLE ADAPTATION STRATEGIES

POSSIBLE PROJECTS, PROGRAMS, AND POLICIES TO IMPLEMENT THE LA SAFE VISION FOR ST. JOHN THE BAPTIST PARISH

## CREATE A PEDESTRIAN NETWORK AND A STATION FOR ALL KINDS OF TRANSIT

LaPlace, East Bank, and West Bank

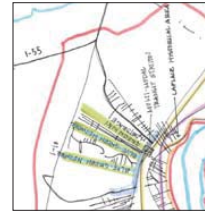
Low Risk Zones

*Build a transit station in LaPlace and use it to anchor a pedestrian network along canals*

- Partner with ongoing efforts to develop a station area plan for Baton Rouge-New Orleans rail
- Leverage resources to plan and build a center for all kinds of transit at LaPlace station
- Create a plan to provide parishwide transit options (prior to rail and coordinated with future rail)
- Develop canals as waterfront amenities and establish pedestrian paths to connect people to public spaces
- Look at new ways to connect East and West Banks



Concept sketch of canal networks connecting to a multi-modal station



VISIT US ONLINE  
[lasafe.la.gov](http://lasafe.la.gov)  
[@livesafe](https://www.facebook.com/livesafe)  
  

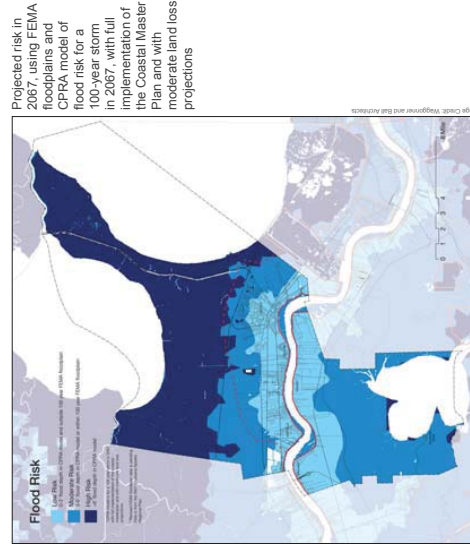
## FUND HOMEOWNER INCENTIVES ON HIGHER GROUND

Parishwide

Low Risk Zones

*Make it affordable for people to live in safer areas*

- Use best available data on future flood risk
- Create programs to reduce homebuying costs in the less risky areas
- Start with LA SAFE funding, then use other funds to sustain
- Expand existing housing repair and maintenance programs to renovate substandard housing
- Provide housing education and counseling programs for new homeowners



Projected risk in 2067 using FEMA floodplains and CPRA model of flood risk for a 100-year storm in 2067, with full implementation of the Coastal Master Plan and with moderate land loss projections

## INCREASE JOB TRAINING AND EDUCATION FOR PARISH RESIDENTS

Parishwide

All Risk Zones

*Increase parish residents in local jobs*

- Partner with industry, school systems, and economic development to facilitate training programs for future industries:
  - Renewable energy
  - Future coastal restoration construction
  - Creative industries
  - Medical field
  - Information technologies
  - Other emerging industries
- Enhance technical training for existing industries using local employers and educational institutions
- Create apprenticeship programs for key industries—"earn-and-learn"



Solar panel installation



Apprenticeship



Students learning about coastal restoration

WHAT DO YOU THINK?  
 PLEASE FILL OUT A SURVEY SHEET WITH YOUR COMMENTS!



DEMONSTRATION PROPOSAL BOARDS

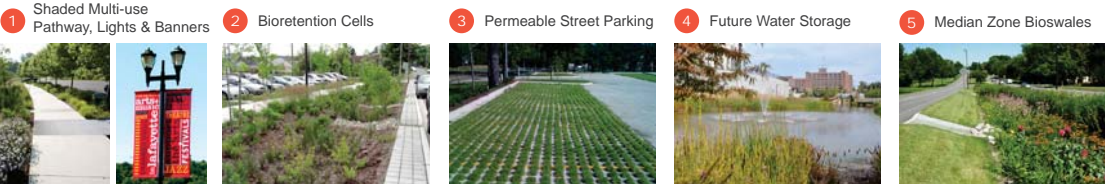
# A AIRLINE & MAIN COMPLETE STREETS



Airline Hwy Phasing Plan; credit: St. John the Baptist Parish



Main Street Plan View



Airline Highway Perspective View

WAGGONNER & BALL



Main Street Perspective View

WAGGONNER & BALL

# DEMONSTRATION PROPOSAL BOARDS

# A

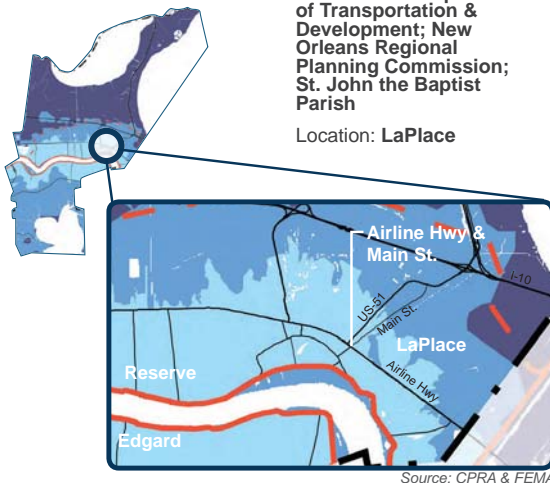


## PROPOSAL

Envisioning a future with heightened flood risk, it is important to incorporate stormwater strategies within urban and suburban environments, while also providing residents enhanced transportation options. This proposal is for street improvements to a 1.3-mile segment of Airline Hwy. and a 0.3-mile segment of Main St. Funding is currently available for Airline Hwy. improvements including an off-street pedestrian and cyclist path, a green median and shade trees. This proposal adds green infrastructure components to hold and filter runoff and extends to Main St., adding new bioretention cells, sidewalks, permeable parking, native plantings and historic light poles and banners. These complete street designs aim to attract reinvestment in commercial corridors, alleviate drainage systems and reduce flooding, improve safety for pedestrians and cyclists and enhance both aesthetics and urban identity.

### Key Info

Project Area	Airline Hwy - 1.3 mi Main St. - 0.3 mi
LA SAFE Investment	Up to \$4.7M
Available Funding	\$8M
Estimated Project Cost	\$12.7M
Partners: LA. Dept. of Transportation & Development; New Orleans Regional Planning Commission; St. John the Baptist Parish	
Location: LaPlace	



### Community Benefits



Incorporates green infrastructure into Airline Highway and Main Street to minimize the impacts of stormwater runoff.



Creates opportunities for development and reinvestment in older, higher ground areas of the parish.



Provides separated bicycle and pedestrian paths, giving transportation choices to everyone, including low-income, diverse, and elderly populations.



Provides multimodal connections between jobs, services, educational and medical facilities and homes. Encourages redevelopment and reinvestment in established neighborhoods.



Connects to regional Mississippi River levee trail system and encourages use and redevelopment of historic Main Street.

## COMMENTS

### What do you like about this proposal?

- It reduces flooding and improves safety love the fact it encourages folks to walk safety from area to the next. Gets youth outside more.

### What do you not like about this proposal?

- It appears to promote the interest of business before residents (not for natives or encouraging natives to stay).

DEMONSTRATION PROPOSAL BOARDS

# B DUBOURG CANAL PARK



Perspective View

Phase I

- 1 Expanded canal capacity with vegetated edges
- 2 Shared-use trail connecting Fairway Drive to Dominican Drive
- 3 Retention ponds with trail network and pavilions, native plantings and trees

Future Vision

- 4 Shared-use trail extension to Airline Highway
- 5 Tree plantings and water storage in shopping center parking
- 6 Future Opportunities for Water Storage



Precedent images of paths, boardwalks, and crossings in a wetland park



Precedent image of pathway along waterway

## DEMONSTRATION PROPOSAL BOARDS

## B

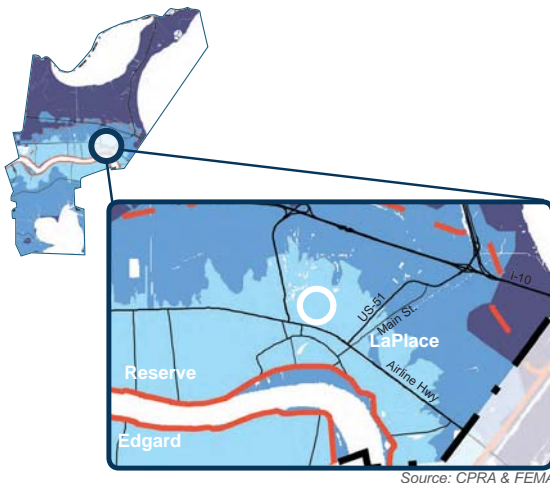


## PROPOSAL

Areas subject to future flood risk must consider stormwater management features in addition to current and planned structural protection systems. This proposal is to design and construct an improved canal with enhanced drainage capacity and a shared trail connecting Fairway Dr. to Dominican Dr. On the grounds of Place Dubourg Senior Independent Living Facility, water storage expands into a new park with detention ponds to further improve drainage and provide senior citizens a beautiful outdoor space for recreation. The proposed linear park connects two schools, a park, a senior living facility, and adjacent neighborhoods, while a future phase envisions cutting through Riverlands Shopping Center and extending to Airline Hwy. This project improves drainage to alleviate flooding in the area and provides an educational and recreational amenity to the community.

## Key Info

Project Area	Canal - 3,600 LF Park - 5 acres
LA SAFE Investment	Up to \$4.7M
Estimated Project Cost	\$4.7M
Partners	St. John the Baptist Parish; property owners; nonprofits
Location	LaPlace



Source: CPRA &amp; FEMA

## Community Benefits



Onsite retention capacity and stormwater management interventions slow water flow as it moves into the bayou.



Creates a park and natural walking amenities to adjacent neighborhoods and nearby civic facilities.



Extends a shared trail system connecting commercial centers and residential developments.



Potential for outdoor nature learning center, parks and recreational areas to make area attractive for neighborhood and business reinvestment.



Provides walking and recreational amenities and the opportunity to learn about the natural systems that have helped shape the parish's culture.

## COMMENTS

## What do you like about this proposal?

- It's my 1st choice. I love how it is promoting education along with recreation which is where I see encouragement for youth to stay. Love the drainage ideas also.
- There's nothing I don't like about it at all.

## What do you not like about this proposal?

- Make sure that the canal can still be dredged.

DEMONSTRATION PROPOSAL BOARDS

# C MIXED-USE HOUSING DEVELOPMENT

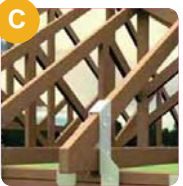
Low Risk Example in LaPlace  
Existing Housing Density: 3.6 units per acre | Proposed Density: 12 units per acre



\* **Mixed-Use Buildings** in low-risk areas attract local businesses like coffee shops, restaurants and retail stores to neighborhoods. Multistory buildings accommodate more people while preserving green space for recreation and stormwater management. In turn, more residents are likely to patronize businesses within walking distance.



\* **Pier and Beam Foundations**



\* **Wind Resistant Design**



\* **Solar Power**



\* **Community & Market Space**



\* **Permeable Paving**



\* **Stormwater Park & recreation paths**



\* **Complete Streets with Bump-outs, Bioswales & trees**



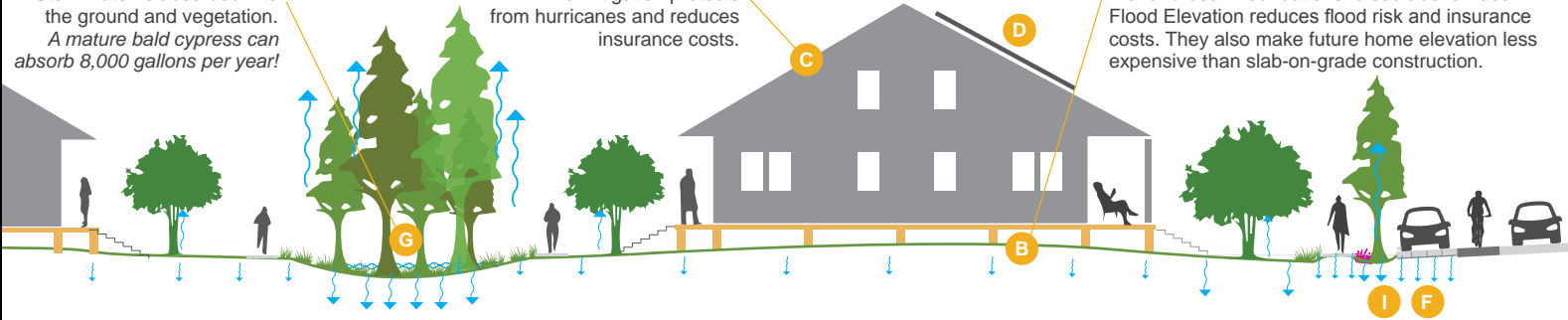
\* **Community Gardens**

\* denotes ideas rated highest by St. John residents at Meeting 3.

Stormwater is absorbed into the ground and vegetation. A mature bald cypress can absorb 8,000 gallons per year!

Wind mitigation protects from hurricanes and reduces insurance costs.

Pier and beam foundations raised above Base Flood Elevation reduces flood risk and insurance costs. They also make future home elevation less expensive than slab-on-grade construction.



Moderate Risk Example *Model based on another parish.*



\* **Elevated Housing** in moderate-risk areas protect from flooding and provide space underneath for parking and gathering. In the model above, homes share a single elevated platform, reducing construction costs while preserving a single-family housing typology.

## DEMONSTRATION PROPOSAL BOARDS

## C



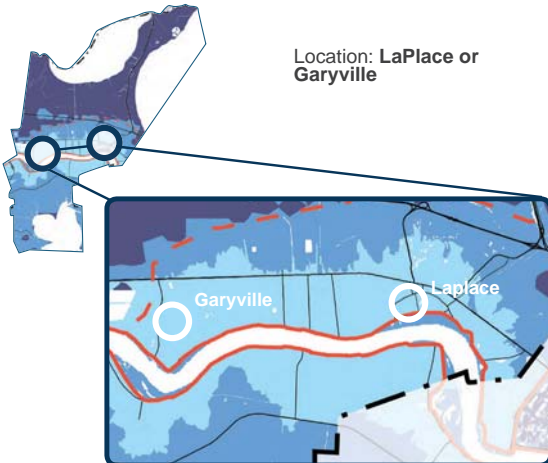
## PROPOSAL

Low flood risk areas are well positioned to receive population and economic growth. Medium-density, affordable, residential and mixed-use developments should be prioritized. LA SAFE has identified LaPlace and Garyville as two potential locations for this type of development. This project will incorporate approximately 30 housing units and ground-floor commercial space for neighborhood amenities like restaurants or cafes. Depending on final site selection, the built units could be Phase 1 of a larger neighborhood master plan, or stand alone as a single development. Landscaping and shared green space will manage stormwater while adding beauty to the surrounding neighborhood. Roughly half the units will be market rate and the rest will be affordable to residents earning 20%, 30% and 50% of area median income.

## Key Info

Housing Units Created	Approx. 30 units
Commercial Space	Approx. 10,000 sf
LA SAFE Investment	\$4-6 million
Estimated Project Cost	\$10-12 million
Partners	Private developers; St. John the Baptist Parish Housing Authority

Location: LaPlace or Garyville



Source: CPRA & FEMA

## Community Benefits



## COMMENTS

## What do you like about this proposal?

- I like that funding wouldn't be an issue. I would like to see all homes are built above flood elevation.
- Mixed housing with commercial space the fact it doubles in space to occupy stormwater.
- This are is well located for future development.

## What do you not like about this proposal?

- I don't like it only provides 30 housing units which don't even specify residential or business housing. I'd like all of it to be residential housing.

DEMONSTRATION PROPOSAL BOARDS

# D EDGARD COMMUNITY CENTER & SHELTER



Aerial View in front east



Site Plan View

est an nit enter  
vac ati n elter

This community center is designed as a simple metal-framed structure with durable, hurricane-rated materials and sheltered outdoor space on the site of the existing ,000 sf community center. The proposed building features permeable pavers and bioswales to hold stormwater.



Existing West Bank Community Center

- 1 Entry Hall
- 2 Community Room
- 3 Office & Meeting Space
- 4 Covered Porch
- 5 Rain Gardens
- 6 Rainwater Cistern
- 7 Pervious Parking
- 8 Commercial Kitchen
- 9 Restroom
- 10 Mechanical
- 11 Fire Trucks
- 12 Generator

## DEMONSTRATION PROPOSAL BOARDS

## D

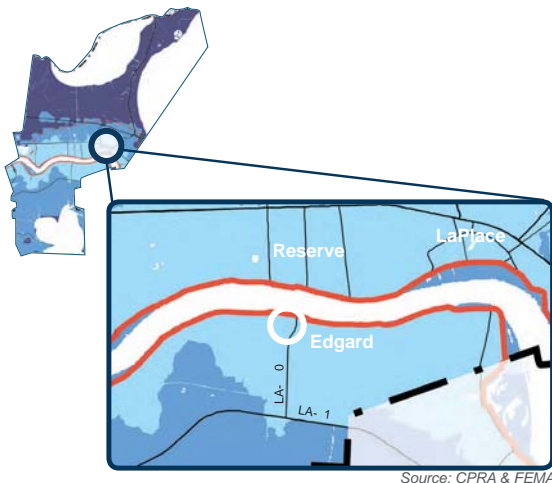


## PROPOSAL

Areas with low flood risk are expected to experience population and economic growth, requiring facilities to support that growth. This proposal is for a multi-service community center in Edgard to replace the existing E. 3rd St. facility. The new 7,500 sf facility includes a multi-purpose room, a commercial kitchen, and office/meeting space, and doubles as a hurricane evacuation shelter. It is elevated above the street level to avoid localized flooding, is hurricane resistant, energy efficient, handicap accessible and fitted with a generator to remain functional during power outages. The community event space extends outside to a covered porch and the site incorporates stormwater best management practices, with rain gardens, bioswales, cisterns and pervious parking.

## Key Info

Project Area	Approx. 1 acre
LA SAFE Investment	Up to \$4.3M
Estimated Project Cost	\$4.3M
Partners	St. John the Baptist Parish; private industry; nonprofits
Location	Edgard



Source: CPRA &amp; FEMA

## Community Benefits



Engineered landscaping and pervious parking retains stormwater on-site, reducing loads on the drainage system.

Provides a centralized gathering area amenity which helps attract future housing and development.

The West Bank Community Center will be located near the courthouse and other parish buildings, creating a center that could be more easily served by transit in the future.

Educational signage explains stormwater management systems, enhances community awareness and encourages replication of best practices throughout the parish.

Provides a facility for cultural and recreational activities for all age groups.

## COMMENTS

## What do you like about this proposal?

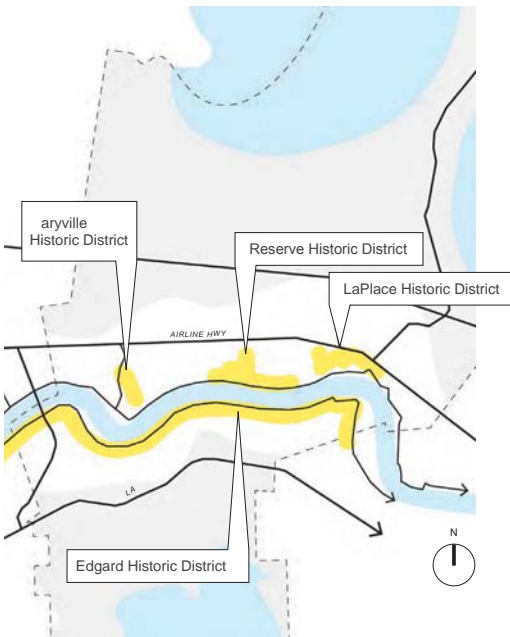
- The simple fact its even taking in consideration the West Bank residents or future.

## What do you not like about this proposal?

- I feel as if the community is already adjusted to coming to the East Bank for elsewhere therefore, it will only cater to that small population because I'm knowing the East bankers will not commute there before utilizing neighboring parishes on the East Bank side.

DEMONSTRATION PROPOSAL BOARDS

# E HISTORIC / CULTURAL DISTRICTS & GREEN STREETS



Aerial View of historic neighborhood in St. John the Baptist Parish



Precedent image of branding and signage in a historic neighborhood  
E+FM, Town of Lunenburg Wayfinding

Precedent images of educational green infrastructure signage  
Top: Dockside Wastewater Treatment, Bottom: Sarah Hart English, Hastings Park

Precedent image of a green street

Precedent images of light poles and banners



Macas House, Dugas House, Emilie Plantation House, Evergreen Plantation, Mary State Bank, Maryville Timbermill Museum, E. J. Claire Co. Stores  
Context: Historic Structures in St. John the Baptist Parish  
Credit: State of Louisiana, Office of Cultural Development, Division of Historic Preservation National Register Database

# DEMONSTRATION PROPOSAL BOARDS

# E

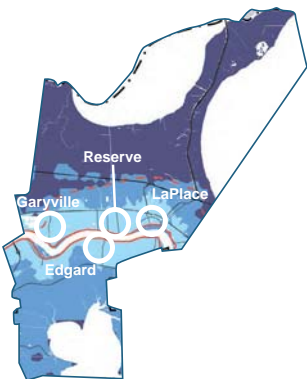


## PROPOSAL

As populations migrate to lower risk areas, it is important to preserve and promote historic assets and local cultures within receiving communities, enhancing quality of life. The four historic and cultural districts in LaPlace, Reserve, Garyville and Edgard represent the parish's most culturally significant places. Their location on higher ground makes them ideal candidates for retaining stormwater in their street networks to help reduce flooding in lower lying areas. This project provides seed funding to install demonstration sections of green streets in all four districts, develop a complete streets design manual and create marketing materials to promote cultural awareness, investment and revitalization in the districts. Demonstration green streets include roadside bioswales with native plantings, upgraded sidewalks, street lighting and banners for improved safety and walkability.

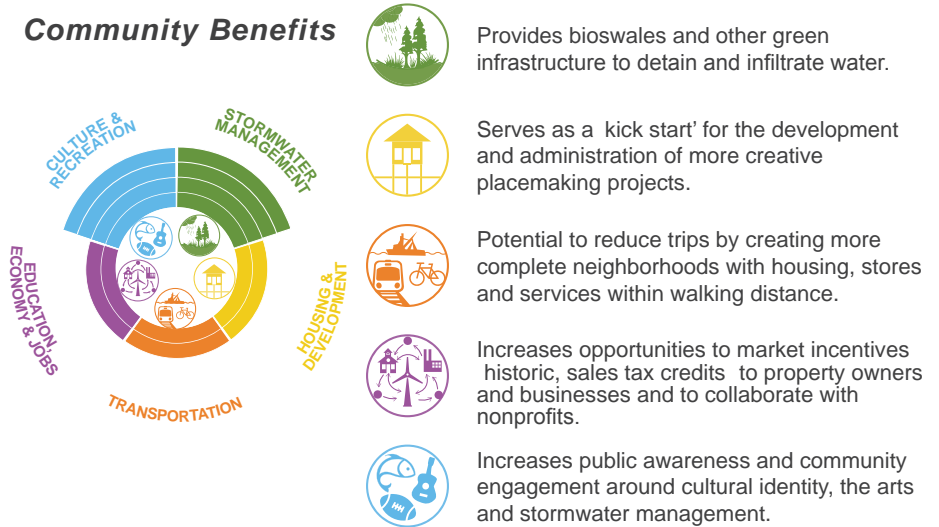
### Key Info

Project Area	Four Historic Districts
LA SAFE Investment	Up to \$3M
Estimated Project Cost	\$3M
Partners	St. John Cultural District Coalition; St. John Parish, LA. Historic Preservation Office, Office of Cultural Development, Division of Historic Preservation Tax Incentives; LA. Trust for Historic Preservation; Garyville Timbermill Museum Association; River Region Arts and Humanities Council; River Parishes Tourist Commission; Lions Club; Reserve-Godchaux House Historical Society; Westbank Stakeholders Group; Whitney Plantation
	Location Garyville, Reserve, Edgard, LaPlace



Source: CPRA & FEMA

### Community Benefits



## COMMENTS

### What do you like about this proposal?

- The fact it's promoting vegetation and its historical facts because of how important the German coast was for New Orleans in late 1700's early 1800's.

### What do you not like about this proposal?

- I like it all, but as it is presently there are not enough historical facts about the residents who built the parish and did the actual later. Breakdown: slave labor and freedmen's contribution.

DEMONSTRATION PROPOSAL BOARDS

# F LAPLACE MULTI-MODAL TRANSIT STATION



Main Street Perspective View



Plan View

**Phase I**

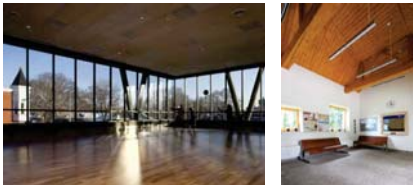
- 1 New Multi-Modal Hub for Bus, Automobile and Future Rail Transportation
- 2 Parking with Permeable Pavers and Bioswales
- 3 Rain Gardens along Railroad Right-of-Way

**Phase II**

- 4 Building and Parking Expansion

**Long Term Vision**

- 5 Park with Water Retention
- 6 Farmer's Market and Outdoor Plaza with Permeable Parking and Bioswales
- 7 Office & Retail with Outdoor Plaza
- 8 Retail Infill Buildings



DEMONSTRATION PROPOSAL BOARDS

F

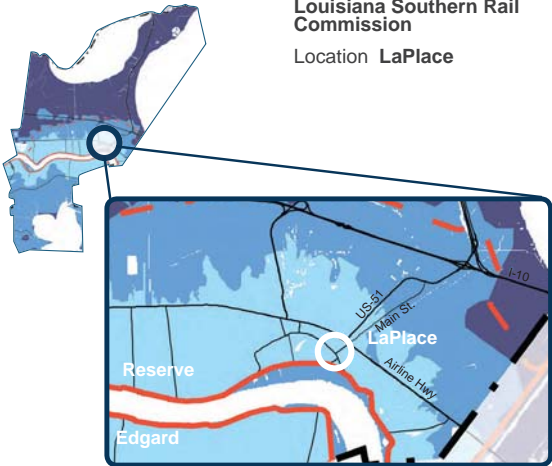


PROPOSAL

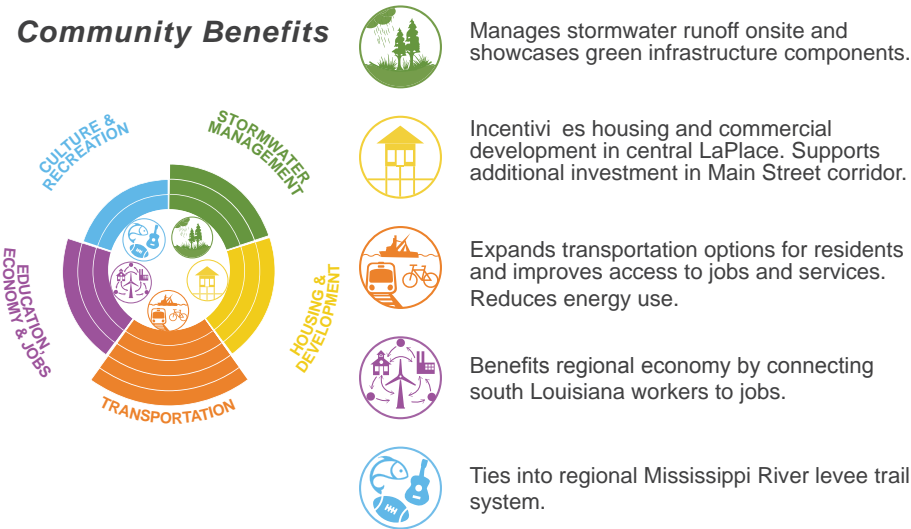
As populations migrate to lower risk areas, development should be clustered in locations with existing infrastructure and amenities. The multi-modal transit station incentivizes economic and population growth in LaPlace's town center, which is situated on a high-ground ridge along the Mississippi River. In addition to providing a centralized hub and transfer location for local and regional bus and automobile transportation in the near term, the station offers flexible space that can be used for rentals, public meetings, disaster staging and other civic uses. In the long-term, it will provide a hub for the proposed regional rail line between Baton Rouge and New Orleans. Quick rail service to these job centers will spur economic development on high ground with strong local and regional connections. Potential components include waiting and boarding areas, a solar energy system, a multi-purpose area, retail/concessions space to generate operating revenue and best practices on site for stormwater management in parking and green areas.

Key Info

Project Area	1 acre
LA SAFE Investment	Up to \$4.7M
Estimated Project Cost	\$4.7M
Partners	St. John the Baptist Parish; South Central Planning and Development Commission; Louisiana Southern Rail Commission
	Location LaPlace



Community Benefits



COMMENTS

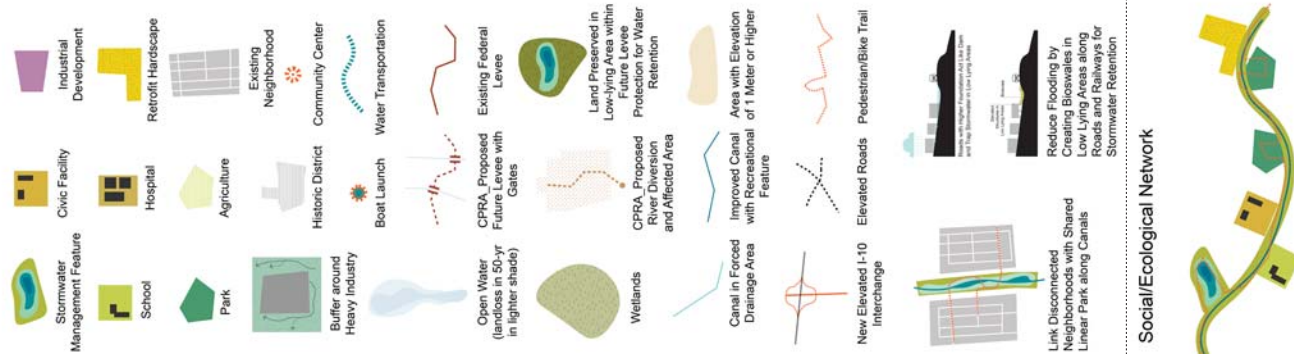
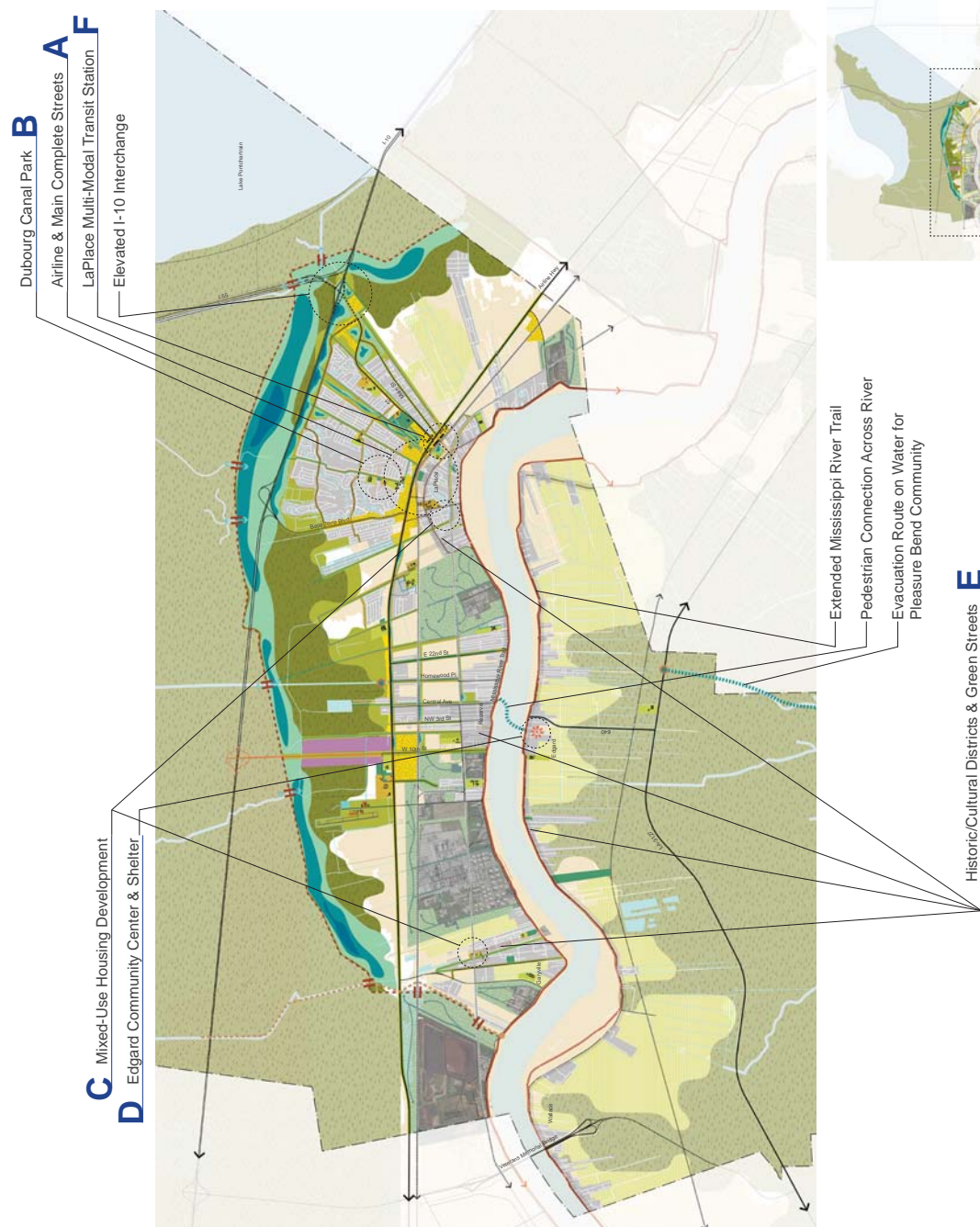
What do you like about this proposal?

- Double disabled space.
- Multi-modal transit station is the way to go.
- I like this proposal because of the drowning possibility of tourist from New Orleans.

What do you not like about this proposal?

- Sounds like too much of transition to a city. It's my 2nd least favorite.

# ST JOHN THE BAPTIST PARISH 50-YEAR VISION



ADDITIONAL MEETING 5 MATERIALS

