

COMMUNITY OPEN HOUSE & PROPOSAL POLLING

WELCOME! The activities tonight are in an open house format. We hope you enjoy, learn, and participate in the polling on the six pilot proposals for your parish.

Before you get started, grab some food, catch up with your neighbors, and enjoy the art and music! If you are new to LA SAFE, visit the boards near the entrance to get caught up on the work so far.

TONIGHT'S PREFERENCE POLLING

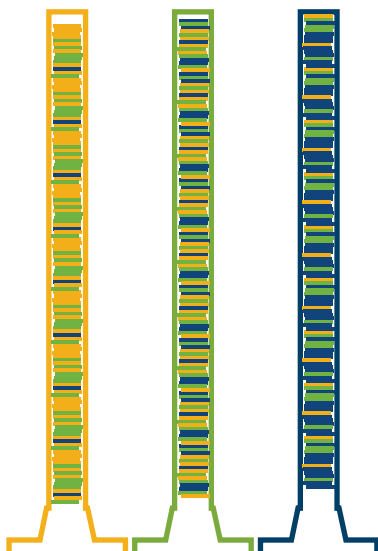
There are six proposal boards around the room. Visit each of them, ask questions, and fill out your comment cards. Once you have thought about each of the proposals, visit the polling station.

You will be given six tokens: two gold, two green, and two blue. **Drop one token in each tube** based on your level of preference. At 7:30 pm, polling will close and the results will be revealed!

Gold is best! These are for your two favorite projects. Each gold token is worth 2 points.

Green is second! These are for your third and fourth favorite projects. Each is 1 point.

Blue is last. These are for your two least favorite projects. No points.



WHY YOUR PREFERENCE MATTERS

These criteria will be used to evaluate the final proposals:

- 1. Public Preference** - The result of the preference polling tonight and an online poll for other past meeting participants.
- 2. Leverage Funds** - The level of matching funds from other sources to implement the project.
- 3. LMI Benefit** - Points awarded to projects that predominately benefit a low-to-moderate income population.
- 4. Public Benefit (Quantitative)** - The level of benefit to the public that can be measured. For example, the number of units created in a housing proposal, or the amount of water stored in a stormwater management proposal.
- 5. Public Benefit (Qualitative)** - The degree to which the project addresses future flood risk in a unique way and/or improves quality of life for residents.
- 6. CRS Score** - Awarded to projects that gain points in FEMA's Community Rating System (CRS), which lowers flood insurance rates.

The final plan, including funding, will be released in the first quarter of 2018!

PLAQUEMINES PARISH PILOT PROPOSALS

For more information, visit the proposal boards online at lasafe.la.gov/project-boards.



A PLAQUEMINES HARBOR OF REFUGE

Storm damage to commercial fishing vessels can significantly impact fishermen's ability to recover after a hurricane. This project will create a harbor of refuge to provide a low-cost option for commercial fishermen to shelter their vessels during disaster events, and incorporates marina amenities, wet-and dry-docking facilities and green infrastructure.



B BELLE CHASSE WETLAND PARK

This project will increase the water storage capacity of Planter's Canal by creating a 180-acre wetland park designed to capture and hold overflow during heavy rain events. This will alleviate flooding in nearby areas and slow subsidence by letting water absorb into the ground. The park will provide recreational and educational opportunities, and connect to existing neighborhoods and trails.



C EMERGING INDUSTRY BUSINESS INCUBATOR

This business accelerator will help diversify the economy by supporting new small businesses in alternative energy, coastal restoration, eco-tourism, and other local vendors. The building will house shared working space and the accelerator program will partner entrepreneurs with mentors in their field to help them start and grow their business.



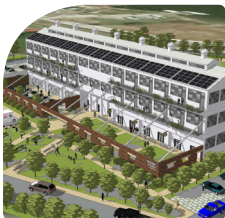
D FISHERMAN & FARMER LOAN PROGRAM

This program will create a low-interest loan fund for those in the fishing and agriculture industries who do not have access to traditional lines of credit. Loans can be used to upgrade equipment, diversify into additional industries, or enhance product quality. Loans will be paired with technical assistance to help borrowers develop business plans and apply for the loans.



E MENTAL HEALTH & SUBSTANCE ABUSE PROGRAM

This program will provide case management services for residents struggling with mental health and substance abuse issues. These services will help disadvantaged populations work through emotional impacts of past disaster events and future increased flood risk.



F RED STAR YEAST BUILDING REDEVELOPMENT

This project will renovate the Red Star Yeast building in Belle Chasse into a mixed-use development, with commercial and retail space on the ground floor and approximately 30 housing units above. The development will serve as a model for resilient design, integrating stormwater management features, installing renewable energy systems, and creating community spaces.