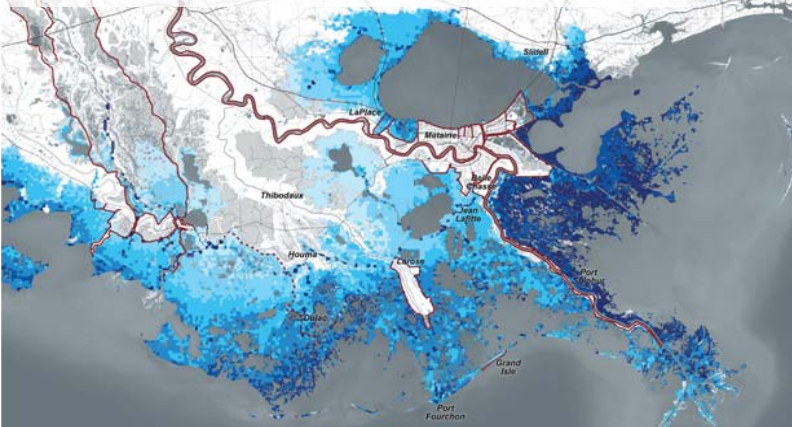


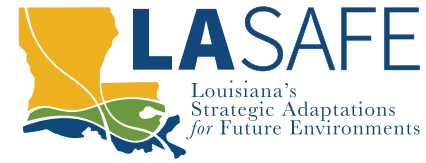
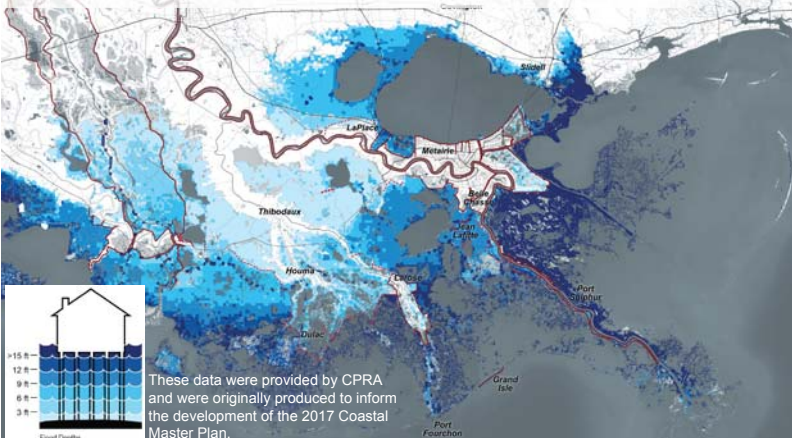
1960 Land



2017 Land Loss & Flood Risk



2067 Land Loss & Flood Risk



LA SAFE OVERVIEW

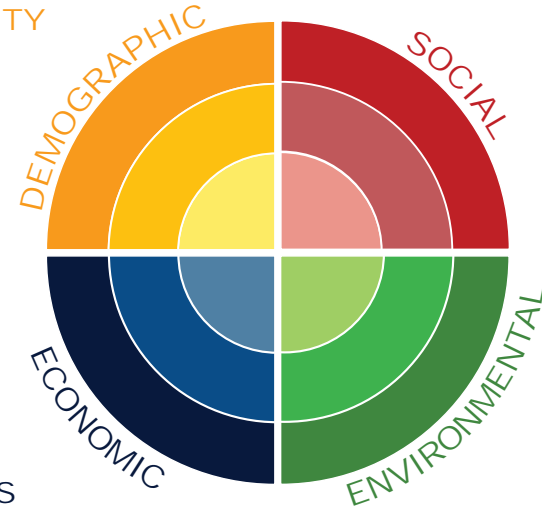
LA SAFE is an approach to planning for future risk, using planning expertise, science, and community input to envision the future of southeast Louisiana. When the plan is complete, we will begin implementation with pilot projects to demonstrate adaptive strategies that will help decrease flood risk for the Louisiana coast.

HOLISTIC APPROACH

Increasing flood risks and environmental challenges lead to changes in population, culture, economy, and education. To address these challenges, we are collecting data and perspectives to find adaptation strategies that can provide multiple benefits across community life.

SOCIAL VULNERABILITY
POPULATION SHIFTS
AGE + DIVERSITY
HOUSING
INCOME

TAX BASE
REAL ESTATE
JOBS + INDUSTRY
FISHING + FARMING
COMMUTER PATTERNS



HEALTH + SAFETY
ORGANIZATIONS
EDUCATION
CULTURE
POLITICS

POLLUTION
SUBSIDENCE
LAND CHANGE
SEA LEVEL RISE
HABITATS + RISK

CONNECTING LOCAL TO REGIONAL

The six LA SAFE parishes - Jefferson, Lafourche, Plaquemines, St. John the Baptist, and Terrebonne - will develop plans that include programs, policies, and projects to support southeast Louisiana communities over the next 50 years.

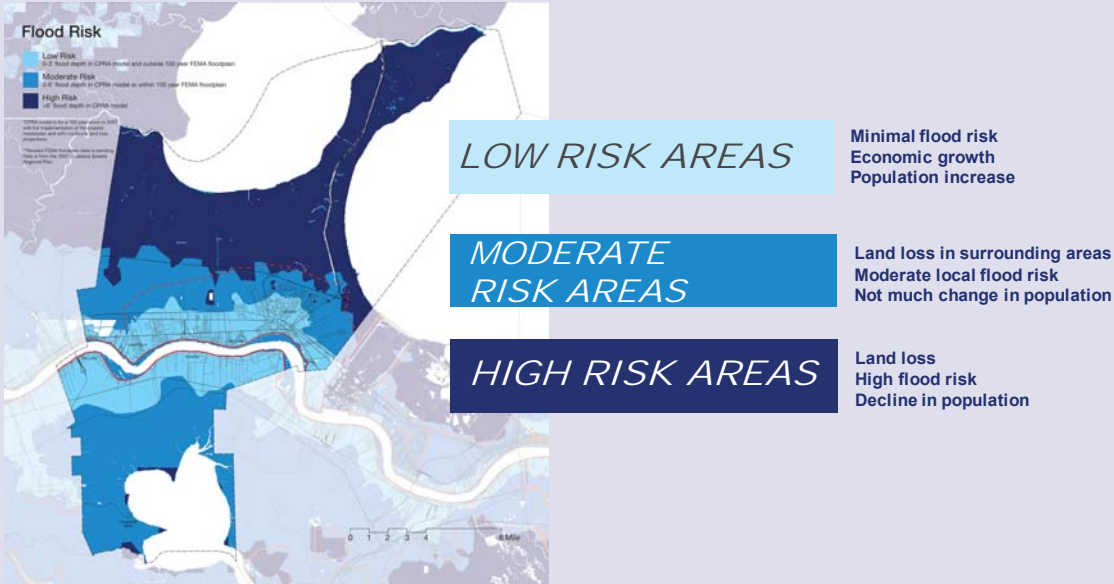
So far, more than 1,500 residents discussed issues related to stormwater management, transportation, and development policy that affect their communities. Through this process, local, regional, and state-scale solutions emerged as well as ways for governments to coordinate across political boundaries.



BIG PICTURE VISION

A 50-YEAR VISION FOR ST. JOHN THE BAPTIST PARISH AND ITS DIFFERENT RISK AREAS

What we expect over 50 years:



VISIONING AROUND RISK

Low Risk: Growth and Community Character

Continue to make areas with higher ground and lower risk ready for growth by providing denser residential and commercial development, increased transportation options, improved stormwater management, and more green spaces.



Moderate Risk: Protect and Preserve

In moderate risk areas, help current communities and cultures safeguard their way of life and at the same time adapt to changing dynamics. Provide elevated transportation routes, improved stormwater management, safe elevated housing, new industries and jobs, grocery stores, health services, and recreational spaces.



High Risk: Recreation and Tourism

In the sparsely populated high risk areas of the parish, encourage expanded recreational, ecotourism, and fishing industries.



PARISHWIDE VISION

Welcome to St. John the Baptist Parish in 2067! We make our parish great by:

1. Managing water to reduce flooding risk;
2. Building community character to attract and retain people of all ages by supporting a healthy environment and expanded recreational and education opportunities;
3. Enhancing mobility and transportation options;
4. Diversifying the economy and enhancing workforce training opportunities;
5. Encouraging growth in low-risk areas; and
6. Providing a variety of housing types.

VISIT US ONLINE

lasafe.la.gov

@livelasafe



WHAT DO YOU THINK?

PLEASE FILL OUT A SURVEY SHEET WITH YOUR COMMENTS!



EXAMPLE ADAPTATION STRATEGIES

POSSIBLE PROJECTS, PROGRAMS, AND POLICIES TO IMPLEMENT THE LA SAFE VISION FOR ST. JOHN THE BAPTIST PARISH

REDUCE FLOOD RISK BY MANAGING STORMWATER

Parishwide

All Risk Zones

Use water as an asset and reduce future flood risk

- Create a parishwide stormwater management plan
- Build weirs on canals to raise water level and develop canals as waterfront amenities
- Use a large forested area as a stormwater storage park and create park paths that connect people to public spaces
- Sustain hydrology between future levee and I-10 to fight future subsidence



Wally Pontiff Park in Metairie, LA, is a public park that also manages stormwater



Image Credit: Waggoner and Ball Architects



A New Orleans canal and a rendering of the same canal with amenities - pedestrian path, seating, and trees.

VISIT US ONLINE

lasafe.la.gov

@livelasafe



HELP FUND ALREADY-PLANNED COMPLETE STREETS PROJECTS

Airline Highway and Historic Main Street, LaPlace

Low Risk Zones

Increase quality of life by improving streets

- Fund the design of the Airline Highway Streetscape Improvement Plan between Belle Terre Blvd. and Main St.
- Fund historic Main Street improvements:
 - Add sidewalks
 - Create bike lanes separated from car lanes
 - Add parallel parking
 - Shorten street-crossing distances for walkers
 - Connect to Mississippi River levee trail

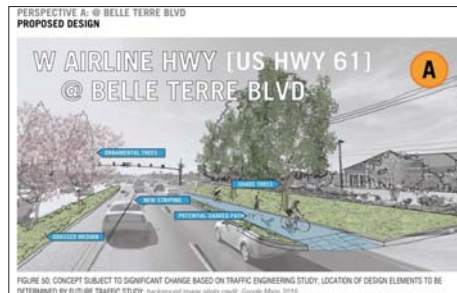


Image Credit: St. John the Baptist Parish

A proposed design for Airline Highway at Belle Terre Blvd from St. John the Baptist Parish's 2016 Application to Louisiana Department of Transportation and Development Transportation Alternatives Program



Image Credit: St. John the Baptist Parish

A proposed design for Main Street from Land Use and Transportation Study: East LaPlace: Sub-Area Analysis Stage 0 Feasibility Study prepared for Regional Planning Commission, Louisiana Department of Transportation and Development, and St. John the Baptist Parish

FUND COMMUNITY CENTERS ON THE WEST BANK

Edgard and Pleasure Bend

Low Risk Zones

Improve places where people gather

- Fund the renovation or rebuilding of the Westbank Community Center in Edgard
- Make improvements to the Pleasure Bend fire station to create a community center



Mel Ott Recreation Center, Gretna, LA



Yoga at the Mel Ott Recreation Center



Meeting room at Little Caillou Volunteer Fire Department, Chauvin, LA

WHAT DO YOU THINK?

PLEASE FILL OUT A SURVEY SHEET WITH YOUR COMMENTS!

EXAMPLE ADAPTATION STRATEGIES

POSSIBLE PROJECTS, PROGRAMS, AND POLICIES TO IMPLEMENT THE LA SAFE VISION FOR ST. JOHN THE BAPTIST PARISH

CREATE A PEDESTRIAN NETWORK AND A STATION FOR ALL KINDS OF TRANSIT

LaPlace, East Bank, and West Bank
Low Risk Zones

Build a transit station in LaPlace and use it to anchor a pedestrian network along canals

- Partner with ongoing efforts to develop a station area plan for Baton Rouge-New Orleans rail
- Leverage resources to plan and build a center for all kinds of transit at LaPlace station
- Create a plan to provide parishwide transit options (prior to rail and coordinated with future rail)
- Develop canals as waterfront amenities and establish pedestrian paths to connect people to public spaces
- Look at new ways to connect East and West Banks



Conceptual rendering of a possible multi-modal station area along Main Street, Airline Highway, and the existing rail line in LaPlace, from the *Feasibility and Conceptual Plan for Passenger Rail and Multi-Modal Transit Center* prepared for Southern Rail Commission and St. John the Baptist Parish



Concept sketch of canal networks connecting to a multi-modal station

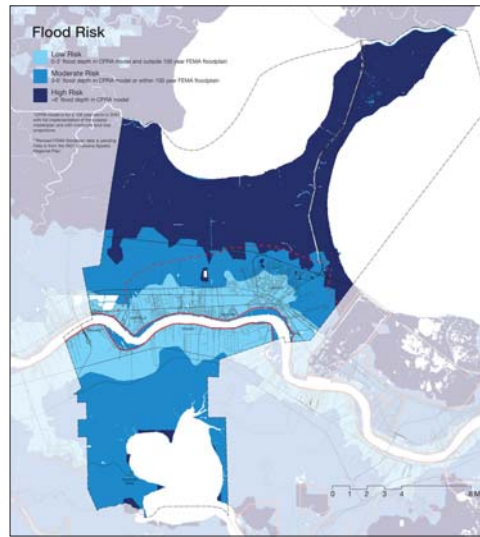
VISIT US ONLINE
lasafe.la.gov
[@livelasafe](https://www.facebook.com/livelasafe)
[Social media icons]

FUND HOMEOWNER INCENTIVES ON HIGHER GROUND

Parishwide
Low Risk Zones

Make it affordable for people to live in safer areas

- Use best available data on future flood risk
- Create programs to reduce homebuying costs in the less risky areas
- Start with LA SAFE funding, then use other funds to sustain
- Expand existing housing repair and maintenance programs to renovate substandard housing
- Provide housing education and counseling programs for new homeowners



Projected risk in 2067, using FEMA floodplains and CPRA model of flood risk for a 100-year storm in 2067, with full implementation of the Coastal Master Plan and with moderate land loss projections

INCREASE JOB TRAINING AND EDUCATION FOR PARISH RESIDENTS

Parishwide
All Risk Zones

Increase parish residents in local jobs

- Partner with industry, school systems, and economic development to facilitate training programs for future industries:
 - Renewable energy
 - Future coastal restoration construction
 - Creative industries
 - Medical field
 - Information technologies
 - Other emerging industries
- Enhance technical training for existing industries using local employers and educational institutions
- Create apprenticeship programs for key industries—“earn-and-learn”



Solar panel installation



Apprenticeship



Students learning about coastal restoration

WHAT DO YOU THINK?
PLEASE FILL OUT A SURVEY SHEET WITH YOUR COMMENTS!

LA SAFE wants your opinion

Thanks for taking time to fill out this short survey. We are interested in what you think about the ideas presented here today and will use your feedback to improve the parish adaptation plans we are creating. Please circle the answer that best matches your opinion. We also left space for you to provide comments, if you would like. Thanks again.

Do you agree or disagree with the following statement?
The *PARISHWIDE VISION* and Visions for *LOW, MODERATE, and HIGH RISK AREAS* are right for this parish.

Please circle one. Strongly Disagree Disagree Slightly Disagree Neutral Slightly Agree Agree Strongly Agree

Comments:

Do you agree or disagree with the following statement?
The *REDUCE FLOOD RISK BY MANAGING STORMWATER* strategy is needed in this parish.

Please circle one. Strongly Disagree Disagree Slightly Disagree Neutral Slightly Agree Agree Strongly Agree

Comments:

Do you agree or disagree with the following statement?
The *HELP FUND ALREADY-PLANNED COMPLETE STREETS PROJECTS* strategy is needed in this parish.

Please circle one. Strongly Disagree Disagree Slightly Disagree Neutral Slightly Agree Agree Strongly Agree

Comments:

Do you agree or disagree with the following statement?
The *FUND COMMUNITY CENTERS ON THE WEST BANK* strategy is needed in this parish.

Please circle one. Strongly Disagree Disagree Slightly Disagree Neutral Slightly Agree Agree Strongly Agree

Comments:

Do you agree or disagree with the following statement?

The **CREATE A PEDESTRIAN NETWORK AND A STATION FOR ALL KINDS OF TRANSIT** strategy is needed in this parish.

Please circle one. Strongly Disagree Disagree Slightly Disagree Neutral Slightly Agree Agree Strongly Agree

Comments:

Do you agree or disagree with the following statement?

The **FUND HOMEOWNER INCENTIVES ON HIGHER GROUND** strategy is needed in this parish.

Please circle one. Strongly Disagree Disagree Slightly Disagree Neutral Slightly Agree Agree Strongly Agree

Comments:

Do you agree or disagree with the following statement?

The **INCREASE JOB TRAINING AND EDUCATION FOR PARISH RESIDENTS** strategy is needed in this parish.

Please circle one. Strongly Disagree Disagree Slightly Disagree Neutral Slightly Agree Agree Strongly Agree

Comments:

Other Comments:

Can we let you know about the next meeting? If so, tell us how to reach you.

Email and/or phone number

Name

ZIP Code (optional)

Thank you for your input!

Response	Visions	Reduce Flood Risk by Managing Stormwater	Help Fund already Planned Complete Streets	Fund Community Centers	Create a Pedestrian Network	Fund Homeowner Incentives	Increase Job Training
Strongly Disagree	3	2	1	1	0	0	0
Disagree	3	0	1	1	3	2	0
Slightly Disagree	4	0	1	0	1	1	0
Neutral	10	3	9	11	4	6	2
Slightly Agree	4	1	2	4	4	4	0
Agree	27	24	19	22	19	19	21
Strongly Agree	12	33	29	24	26	26	35
Total Responses	63	63	62	63	57	58	58
% Strongly Disagree	5%	3%	2%	2%	0%	0%	0%
% Disagree	5%	0%	2%	2%	5%	3%	0%
% Slightly Disagree	6%	0%	2%	0%	2%	2%	0%
%Neutral	16%	5%	15%	17%	7%	10%	3%
% Slightly Agree	6%	2%	3%	6%	7%	7%	0%
% Agree	43%	38%	31%	35%	33%	33%	36%
% Strongly Agree	19%	52%	47%	38%	46%	45%	60%

Survey Number: 1

Zip: 70049

Fund Complete Streets: Slightly Disagree

“There is no mention of the needs for street maintenance and improvements for the West Bank area.”

Fund West Bank Community Center: Agree

“There is much immediate need for renovations and rebuilding on the West Bank. This should be done ASAP.”

Pedestrian Network: Slightly Agree

“Connecting the East and West Bank by ferry should be the No. 1 priority.”

Survey Number: 2

Zip: 71084

Other Comments: Strongly Agree with Complete Streets, Community Center and Job Training

“Hopefully with the ones that I strongly agree we see some positive results.”

Survey Number: 11

Zip: not given

Parish Vision: Slightly Disagree

“Parish needs to dredge canals and check for broken pipes and clean canals more often. Canals don’t flow as good as in Jefferson Parish.”

Pedestrian Network: Disagree

“waste of money, in my opinion”

Homeowner Incentives on Higher Ground: Disagree

“I live in a low flood risk area and have to worry about water every time it rains hard. We need to inspect pipes and canals more.”

Survey Number: 15

Zip: 70403

Parish Vision: Neutral

“I live in Hammond, LA.”

Survey Number: 20

Zip: 70069

Parish Vision: Disagree

“We need the protection on the lake side where the water enters when the lake is high or it’s windy, causing the neighborhood to flood.”

Stormwater Management: Strongly Agree

“Only if the levees are completed before the bike lanes.”

Fund Complete Streets: Strongly Agree

“Only if the levees are completed before the bike lanes.”

Homeowner Incentives on Higher Ground: Strongly Agree
“Lower flood insurance.”
Increase Job Training: Strongly Agree
“Not everyone can afford college.”

Survey Number: 21
Zip: 70068
Parish Vision: Disagree
“We need a levee on the lake side of Laplace and Reserve.”
Stormwater Management: Agree
“We need levees, not bicycle lanes.”
Fund Complete Streets: No response
“I don’t see the need for bicycle lanes.”
Fund West Bank Community Center: Disagree
“Let’s protect St. John and beautify it later.”
Pedestrian Network: Agree
“need pedestrian street crossings.”
Homeowner Incentives on Higher Ground: Disagree
“I think property should be cheaper in flood zone areas.”
Increase Job Training: Agree
“more funds for helping young adults.”

Survey Number: 22
Zip: not given
Parish Vision: Agree
“I believe it will be a good idea to ensure safety from flooding and erosion.”
Fund Complete Streets: Strongly Agree
“Belle Terre floods very often; this would be a major help.”

Survey Number: 28
Zip: 70068
Parish Vision: Neutral
“All looks good on paper. But.”
Stormwater Management: Strongly Agree
“As a flood victim of this parish.”
Fund Complete Streets: Slightly Agree
“What does a street project have to do with flooding?”
Fund West Bank Community Center: Neutral
“I live on the East Bank.”
Pedestrian Network: Agree
“This would be beneficial if these areas would be enforced by proper authorities.”
Homeowner Incentives on Higher Ground: Agree
“Agree, but with fewer studies and more action.”

Increase Job Training: Strongly Agree

“Parish needs to keep residents of average. Improvements to parish.”

Other Comments: “I am very disappointed in the parish [government] to answer concerned citizens with questions at parish meetings with a simple answer that makes sense to the homeowner.”

Survey Number: 31

Zip: 70454

Other Comments: “Need to have more kid programs to keep them out of trouble.”

Survey Number: 33

Zip: 70068

Other Comments: Need to increase recreational facilities for children. Bring more entertainment businesses to the Parish.”

Survey Number: 34

Zip: not given

Parish Vision: Disagree

“Don’t need any new projects when our pumping system needs work.”

Stormwater Management: Strongly Agree

“There are streets in St. John Parish that need repair and flood easily. Use money to protect what’s already here.”

Fund Complete Streets: Strongly Disagree

“We need flood protection. Use money where needed first.”

Fund West Bank Community Center: Strongly disagree

“See above”

Pedestrian Network: Disagree

“No new projects until other ones are in need.”

Homeowner Incentives on Higher Ground: Strongly Agree

“St. John floods so easily in some areas. This is needed.”

Increase Job Training: Strongly Agree

“Our schools need better teachers. Some of them could use an education.”

Survey Number: 37

Zip: not given

Parish Vision: Neutral

“Levees to hold back rising water.”

Other Comments: “Inform citizens on strategies listed on this survey.”

Survey Number: 38

Zip: not given

Parish Vision: Strongly Disagree

“Our levees are not present. We are not living comfortable. Hurricane season poses a threat to us. The drainage system as well does not sit comfortably with me. The Parish floods too easily in some areas.”

Stormwater Management: Slightly Agree

“Storm water is a start. However, storm surge is the fact. Levees are one problem and drainage is another.”

Fund Complete Streets: Strongly Agree

“This is a project that needs major focus. A team needs to be created to focus on this issue. This issue really needs personal attention.”

Fund West Bank Community Center: Slightly Agree

“We need anything possible to support our communities.”

Pedestrian Network: Strongly Agree

“We need to add a better travel system along Airline Hwy. Bike routes or walk routes. We have too many fatalities of innocent people trying to travel.”

Homeowner Incentives on Higher Ground: Strongly Agree

“Education of the possibilities. People need to be informed of what they have to help them.”

Survey Number: 42

Zip: not given

Parish Vision:

Stormwater Management: Strongly Agree

“Anytime it rains, it floods on McReine, Maria, Paula, Kathy, Shadowbrook.”

Fund Complete Streets: Strongly Agree

“Yes. It is much needed. They say they have pumps on but it’s always flooded.”

Fund West Bank Community Center: Strongly Agree

“Yes. To help us.”

Pedestrian Network: Strongly Agree

“A lot of people are without transportation in our parish.”

Increase Job Training: Strongly Agree

“Everyone should further their education.”

Survey Number: 44

Zip: 70051

Parish Vision: Agree

“For 2067, maybe, but not within the next 10 years.”

Survey Number: 45

Zip: 70068

Other Comments: “My concerns for none is the flooding on Tiffany and Fairway. Even where there is just a day of rain these two streets flood terribly. Endangering

our trucks and cars and aiding to rust under our vehicles. This cannot continue. We need your help in fixing this problem. Also, where are the flood walls?"

Survey Number: 46

Zip: not given

Homeowner Incentives on Higher Ground: Slightly Agree

"It all sounds good, but there won't be enough tax dollars to fund it all."

Survey Number: 52

Zip: 70068

Homeowner Incentives on Higher Ground: Strongly Agree

"Also mandate new housing to be at a certain level to prevent flooding. Not building in low areas are filling in land are building home raised."

Increase Job Training: Strongly Agree

"Also student apprenticeship programs for students to have part time work in the field they are studying."

Survey Number: 54

Zip: 70068

Parish Vision: Agree

"More communication with people of LaPlace is needed (town hall meetings, Facebook, etc.)

Stormwater Management: Strongly Agree

"Where is the levee around LaPlace?"

Fund West Bank Community Center: Neutral

"I don't live in the area of the West Bank."

Comments summary:

Survey Number	Parish Vision	Storm water Mgmt	Complete Streets	Community Centers	Pedestrian Network	Homeowner Incentives	Job Training	Other Comments
1			Y	Y	Y			
2								Y
3								
4								
5								
6								
7								
8								
9								
10								
11	Y				Y	Y		
12								
13								
14								
15	Y							
16								
17								
18								
19								
20	Y	Y	Y			Y	Y	
21	Y	Y	Y	Y	Y	Y	Y	
22	Y		Y					
23								
24								
25								
26								
27								
28	Y	Y	Y	Y	Y	Y	Y	Y
29								
30								
31								Y
32								
33								Y
34	Y	Y	Y	Y	Y	Y	Y	
35								
36								
37	Y							Y
38	Y	Y	Y	Y	Y	Y		
39								
40								
41								
42		Y	Y	Y	Y		Y	
43								

44	Y							
45								Y
46						Y		
47								
48								
49								
50								
51								
52						Y	Y	
53								
54	Y	Y		Y				
55								
56								
57								
58								
59								
60								
61								
62								
63								
Total Comments	11	7	8	7	7	8	6	6