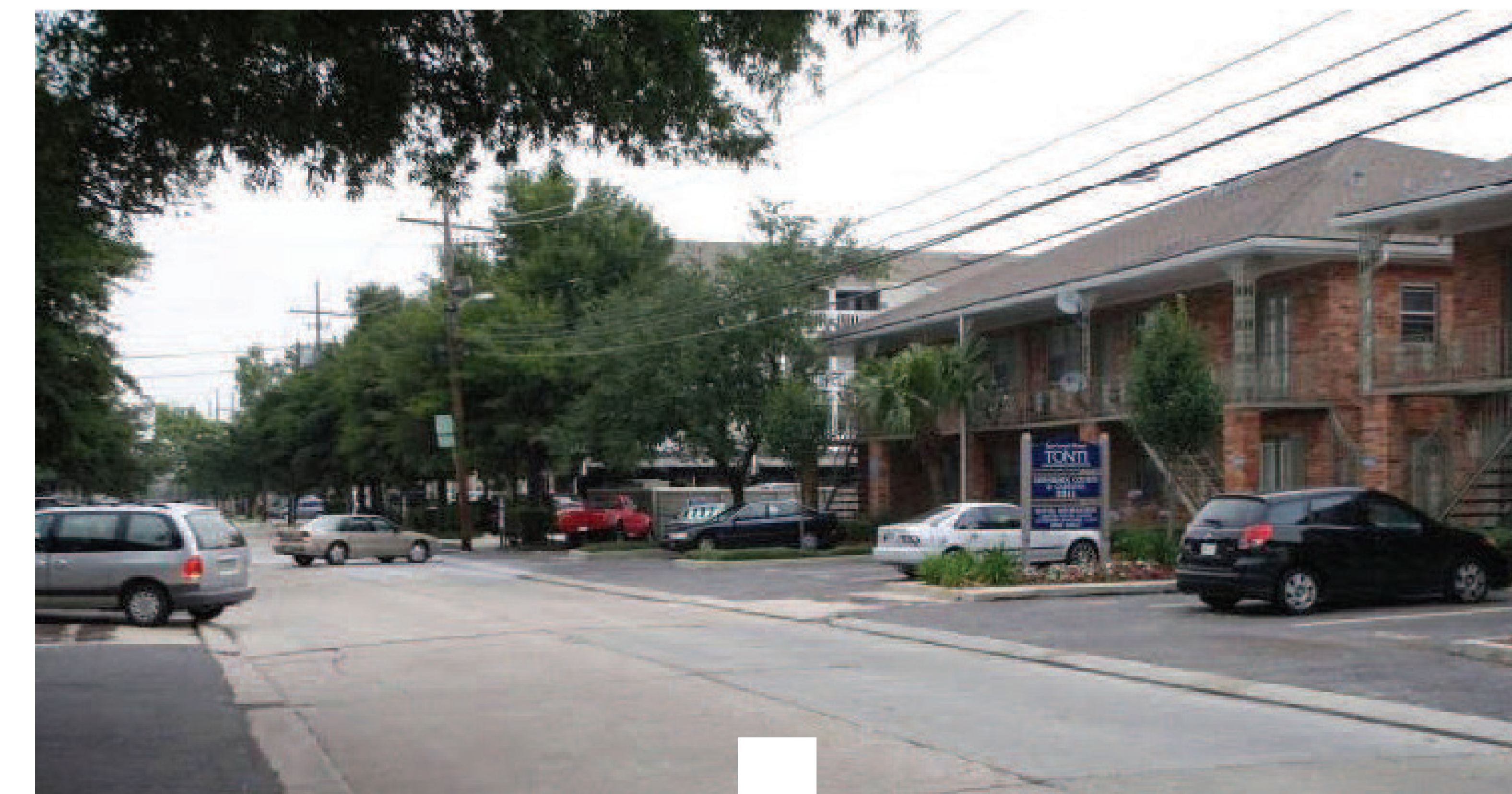
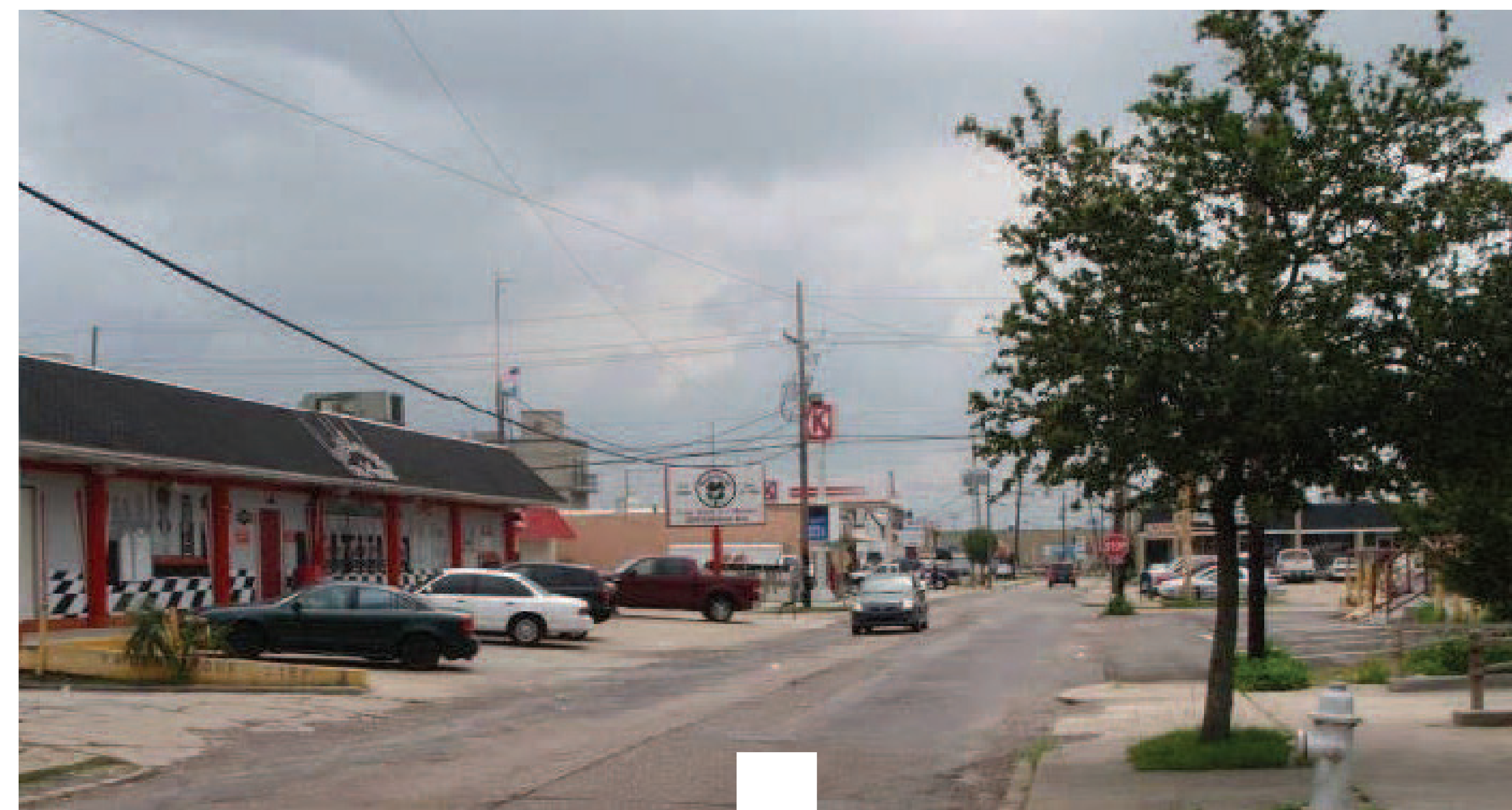


# Fat City & Jefferson Highway Facade Renewal Projects *with Green Components*



*Update aging building fronts with green design, permeable walking surfaces, energy efficient upgrades and stormwater retention features.*

**Components:**  
Co-fund improvements  
to business  
facades, revitalizing  
neighborhoods  
with green building  
principles and energy  
efficient designs.



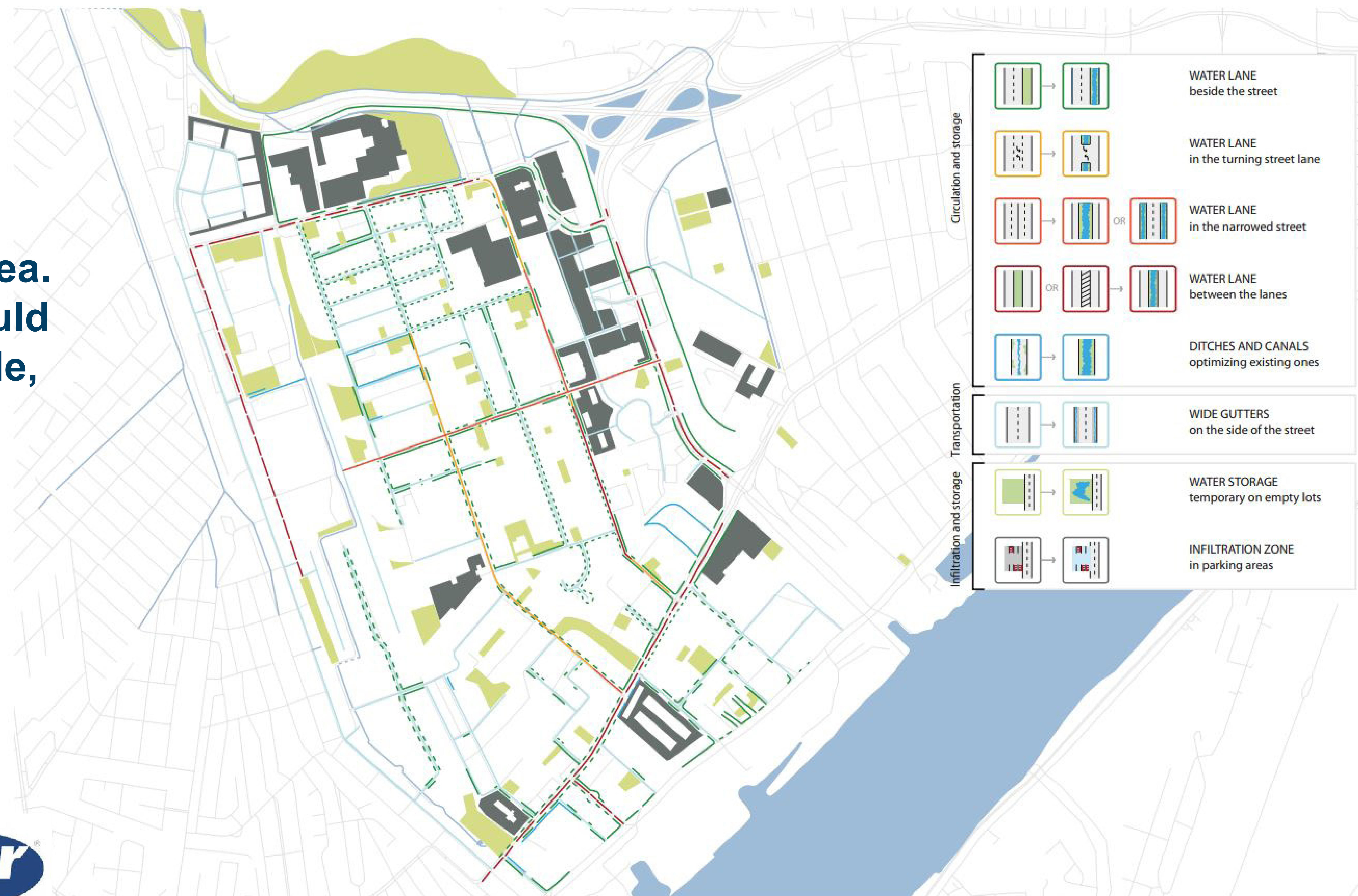


# The Re-Greening of Elmwood

*Revitalize the densely developed Elmwood Shopping Center with permeable parking, walking paths, outdoor recreation opportunities, and multi-use facilities where residents live, work, and play.*



**Components:**  
Restoration of natural woodland along with revitalization of businesses and development in the area. New development would be smarter, sustainable, and limit stormwater management issues.



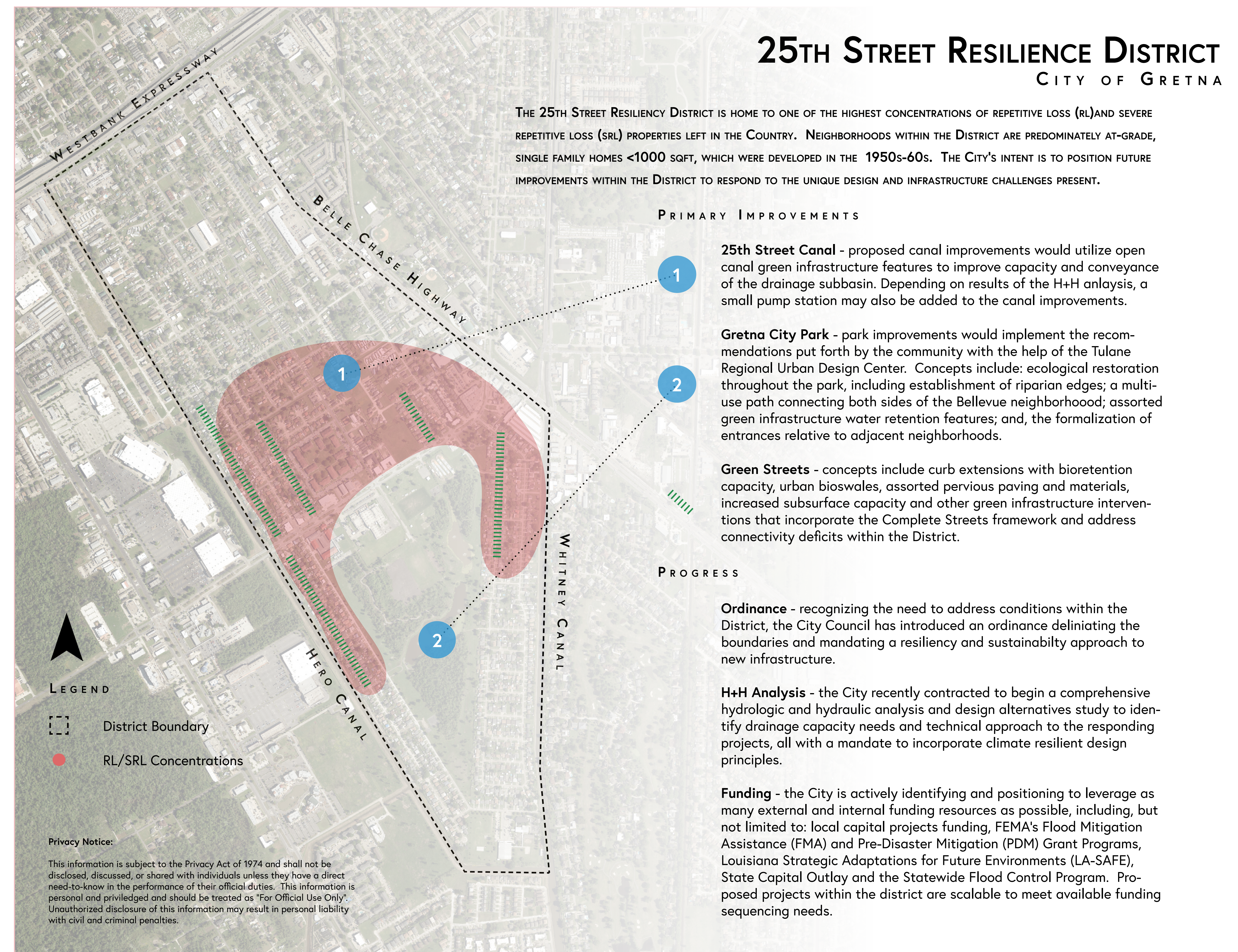


# Gretna Resilience Initiatives

*An ambitious, multi-faceted development and code enforcement approach to future design requirements and innovative retrofitting of aging buildings on Gretna's 25th Street Corridor.*



**Components:**  
Creative updates to development code and robust drainage system improvements in Gretna's Downtown area. Improvements would provide amenities to the public, reduce flood risk, and lay the groundwork for a more resilient future for Gretna.





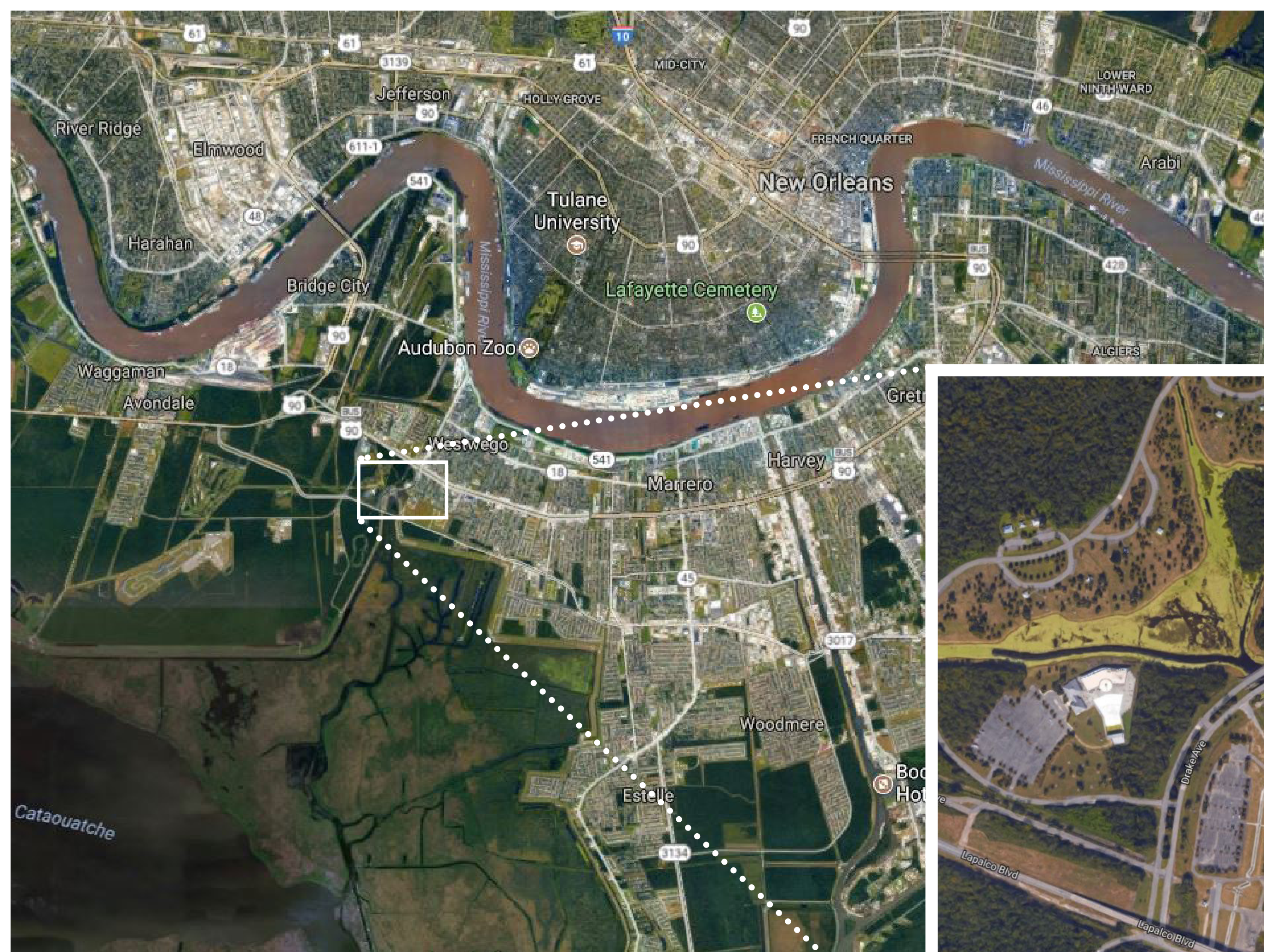
# The Westwego Marina

*An updated marina featuring a fishing pier for recreational access, as well as multiple rent-to-use jetties giving fishermen a place to rest, repair, and refuel.*



## Components:

Situate a new marina nearby Bayou Segnette with economic opportunities for fishermen, paired with recreational and environmental benefits that can be enjoyed by the entire region.





# Lafitte Wetlands Education and Ecotourism Center



*Make use of the abundant natural resources and scenic beauty of Lafitte, installing additional walking paths, water taxis, and an educational nature center near the Nature Study Park Boardwalk.*

## Components:

Improved recreational opportunities paired with educational programs for all ages. Natural areas would act as stormwater retention features and provide a natural barrier to future tropical storm events.





# Existing Efforts Map

***This map shows existing plans, projects, and efforts underway in Jefferson parish.***

