

RESIDENTS' TOP PRIORITIES

EDUCATION, ECONOMY, & JOBS

SUPPORT COMMERCIAL FISHING

CREATE JOBS

JOB TRAINING

IMPROVE EDUCATION

The ideas shown here were the most popular ideas related to the above category from Meeting 3. Larger circles represent ideas that gained more preference votes from residents.



IMPROVE BOAT HARBORS

We heard that safe boat harbors are a major priority for the fishers. In the future, safe harbors could become central nodes around which other businesses can grow.



ACCESS TO LIBRARIES



ATTRACT RECREATIONAL & ENTERTAINMENT ESTABLISHMENTS



JOB OPPORTUNITIES IN RENEWABLE ENERGY



JOB TRAINING PROGRAMS



BUSINESS INCUBATOR TO HELP RESIDENTS START NEW BUSINESSES



DEVELOP AQUACULTURE

Borrow pits have the potential to be repurposed for aquaculture within levee systems.



INCENTIVIZE ESSENTIAL SERVICE PROVIDERS

Create programs that fund development and delivery of essential services like healthcare and groceries to rural residents.



COASTAL RESTORATION CONSTRUCTION JOBS & TRAINING



FINANCIAL ASSISTANCE & LOANS FOR FISHERMEN

Create programs to assist fishermen prepare for the season.



RESIDENTS' TOP PRIORITIES

CULTURE & RECREATION

RECREATIONAL BOAT LAUNCHES AND DOCKS

COMMUNITY SPACES

OUTDOOR RECREATION & CAMPS

The ideas shown here were the most popular ideas related to the above category from Meeting 3. Larger circles represent ideas that gained more preference votes from residents.

FAMILY-FRIENDLY RECREATION IN TOWN CENTER



COMMUNITY GATHERING AND MARKET SPACES



COMMUNITY GARDENS AND PLANTING PROGRAMS



FARMERS & SEAFOOD MARKETS



CULTURALLY-FOCUSED CAMPS AND AFTER- SCHOOL PROGRAMS



COASTAL SUMMER CAMP PROGRAMS



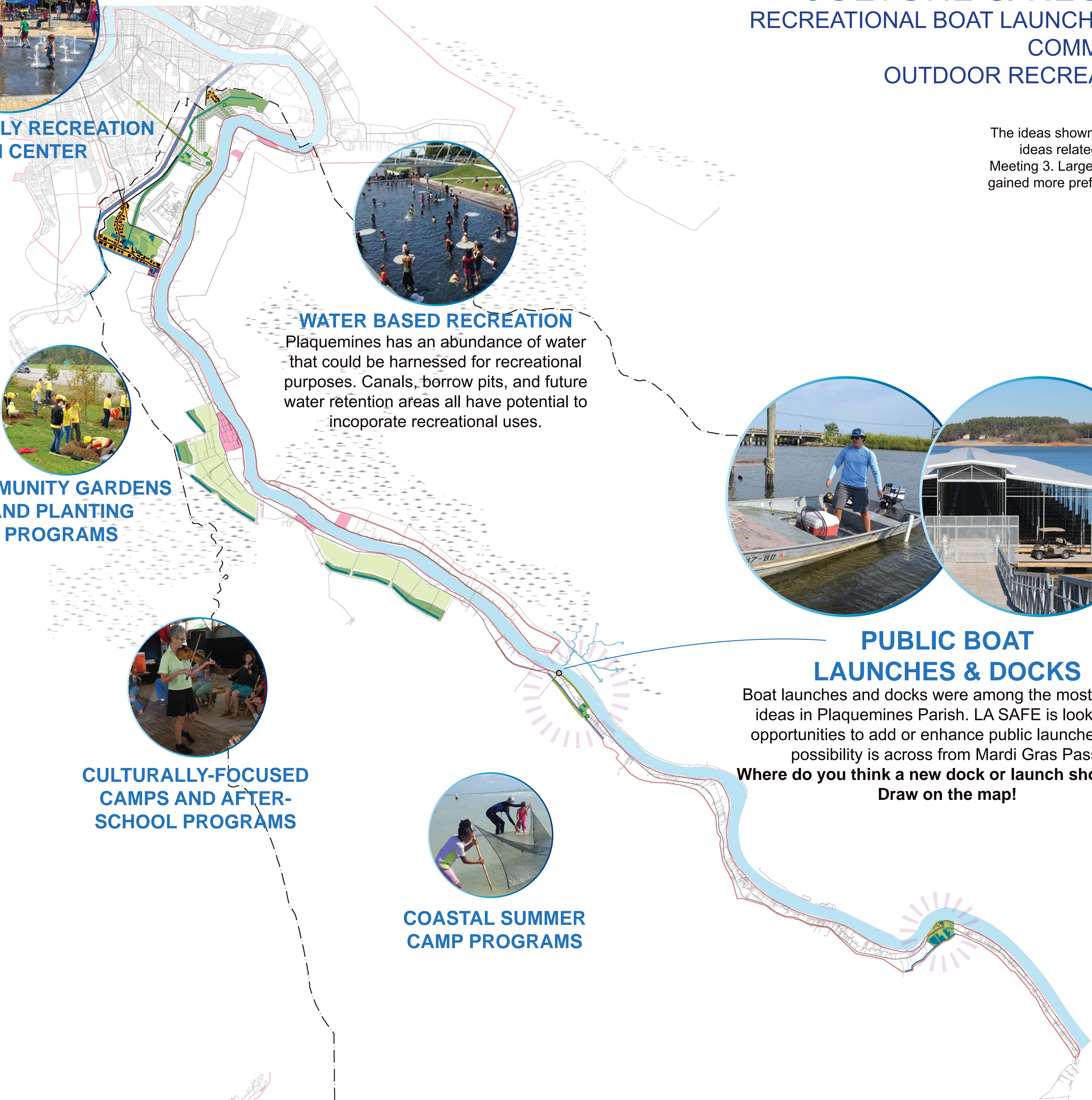
WATER BASED RECREATION

Plaquemines has an abundance of water that could be harnessed for recreational purposes. Canals, borrow pits, and future water retention areas all have potential to incorporate recreational uses.



PUBLIC BOAT LAUNCHES & DOCKS

Boat launches and docks were among the most popular ideas in Plaquemines Parish. LA SAFE is looking for opportunities to add or enhance public launches. One possibility is across from Mardi Gras Pass. **Where do you think a new dock or launch should go? Draw on the map!**



RESIDENTS' TOP PRIORITIES

HOUSING & DEVELOPMENT &

STORMWATER MANAGEMENT & GREEN SPACE

DRAINAGE IMPROVEMENTS

GREEN STREETS

HOME ELEVATION

DENSER DEVELOPMENT

GREEN DEVELOPMENT

The ideas shown here were the most popular ideas related to the above category from Meeting 3. Larger circles represent ideas that gained more preference votes from residents.



INCENTIVIZE ELEVATED HOMES AND NEIGHBORHOODS

Create programs and policies that incentivize elevating housing, including homeowner tax credits and elevation and windproofing subsidies.



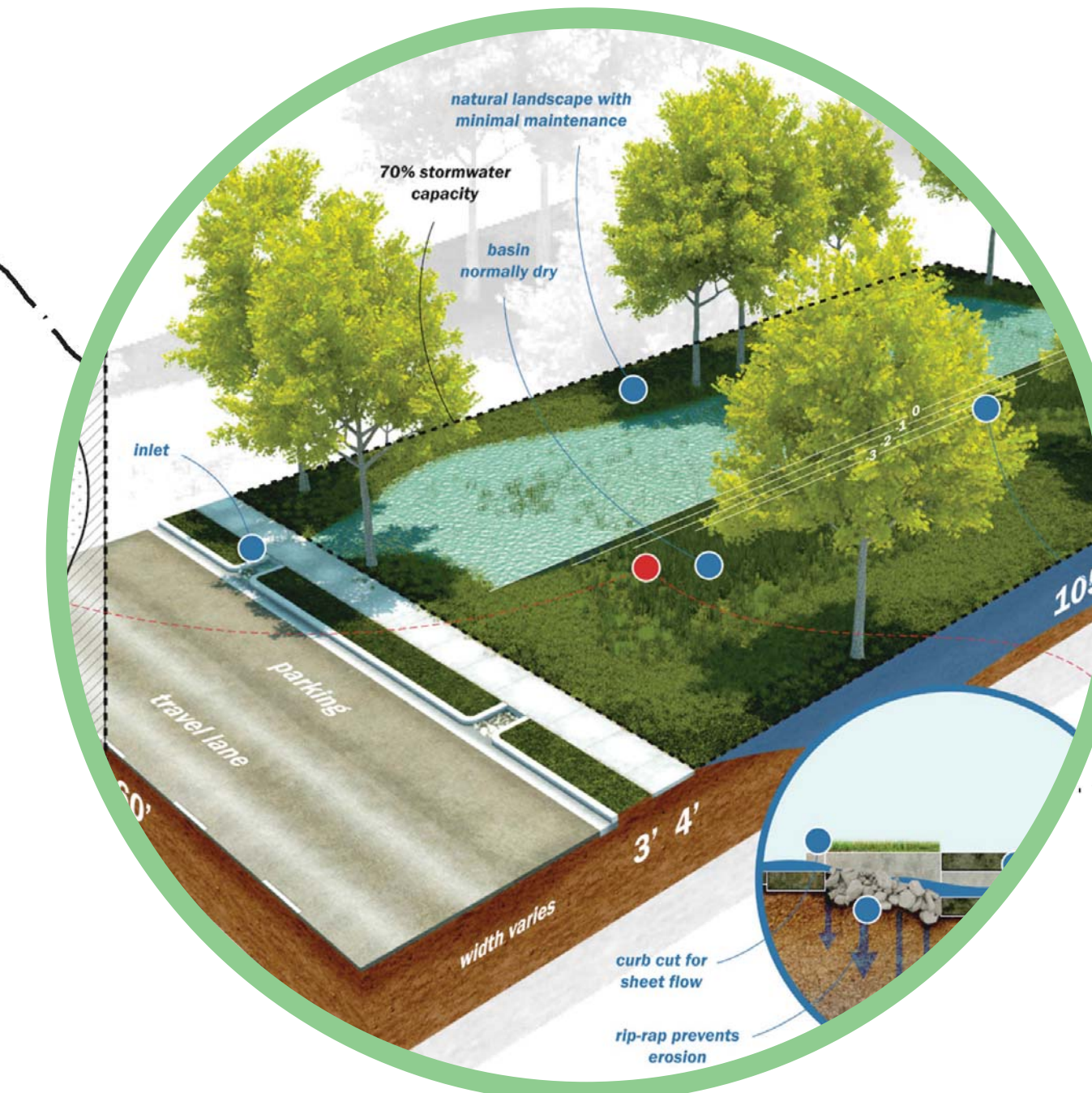
INCREASED AFFORDABLE HOUSING OPTIONS



PLANT TREES TO BREAK UP STORM SURGE



STORMWATER MANAGEMENT REQUIREMENTS FOR NEW DEVELOPMENTS



IMPROVE PARISH DRAINAGE

Align drainage system with natural water flow. Use retention areas to store stormwater and prevent flooding.



STORMWATER RETENTION AND RECREATIONAL PARK

Build a recreational park that will also serve as a stormwater retention area to increase recreational activities in the parish while helping to reduce some flood risk.



GREEN/BLUE STREETS

Adding vegetation and stormwater management components to urban and suburban streets can improve drainage and decrease flooding.

RESIDENTS' TOP PRIORITIES

TRANSPORTATION

BIKING & WALKING PATHS

UPGRADE TRANSPORTATION INFRASTRUCTURE

ALTERNATIVE TRANSIT

The ideas shown here were the most popular ideas related to the above category from Meeting 3. Larger circles represent ideas that gained more preference votes from residents.



UPDATE & BUILD BRIDGES



IMPROVE PUBLIC TRANSPORTATION ACROSS PARISH LINES

55,000 cars drive into Plaquemines every day. Regional transit coordination and/or transportation services that bring workers to major employment centers could alleviate traffic.



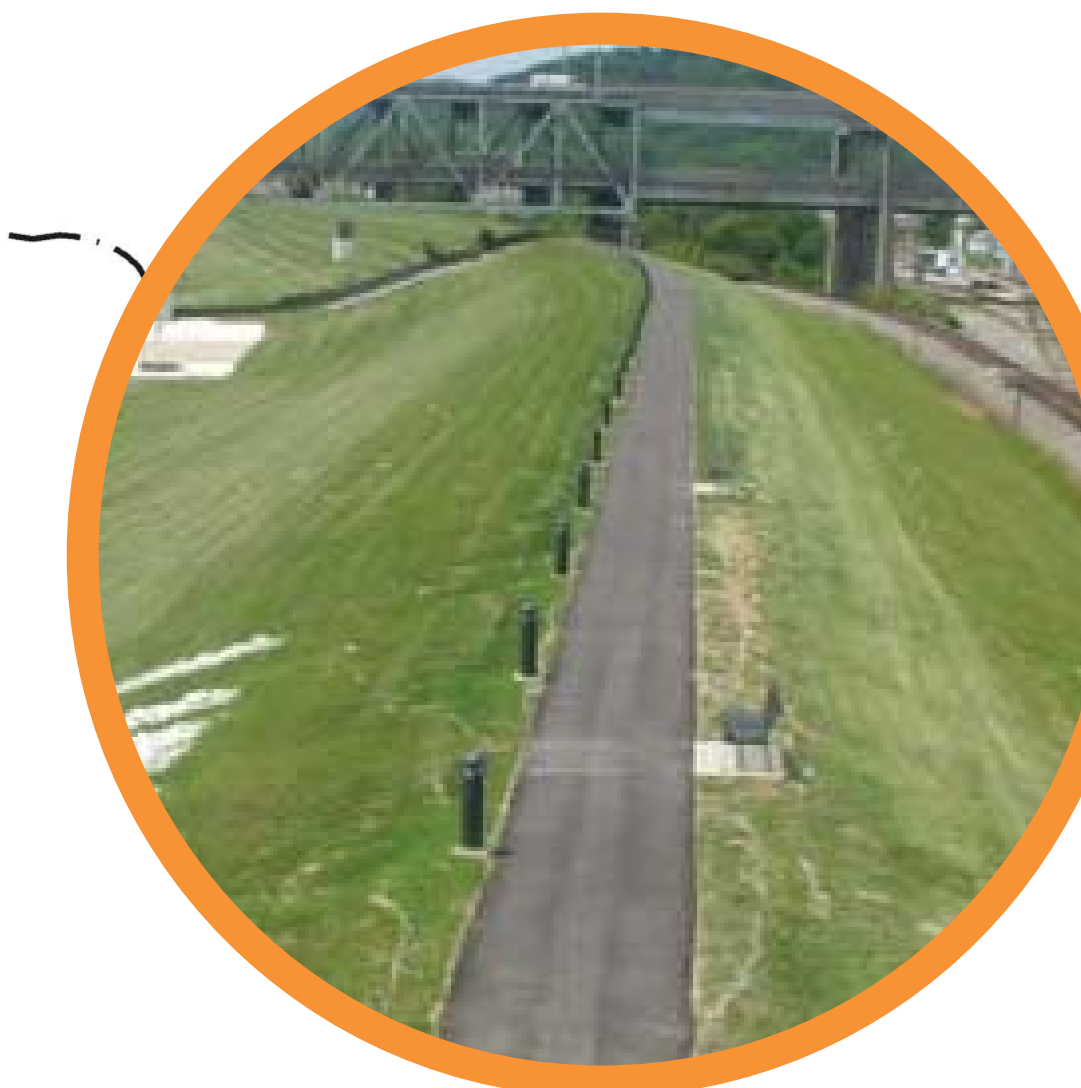
SHUTTLE SERVICES FOR SENIORS AND/OR FOR SPECIFIC PROGRAMS

Shuttle services for medical visits or to deliver food to seniors could be incorporated to projects. One possibility is a food security hub, which could stock and deliver healthy food to rural residents.



COMPLETE STREETS

Walkability and biking connectivity were both highly desired resident goals, especially in denser areas like Belle Chasse. LA SAFE supports "Complete Street" development that incorporates sidewalks, bike lanes, and stormwater management features to enhance neighborhoods, reduce car traffic, promote mixed-use development, and manage stormwater effectively at the same time.



BIKE TRAILS ON LEVEES

Adding bike trails to the Mississippi River levees will require further coordination with the Army Corps of Engineers to determine if this is feasible.



IMPROVED EVACUATION ROUTES

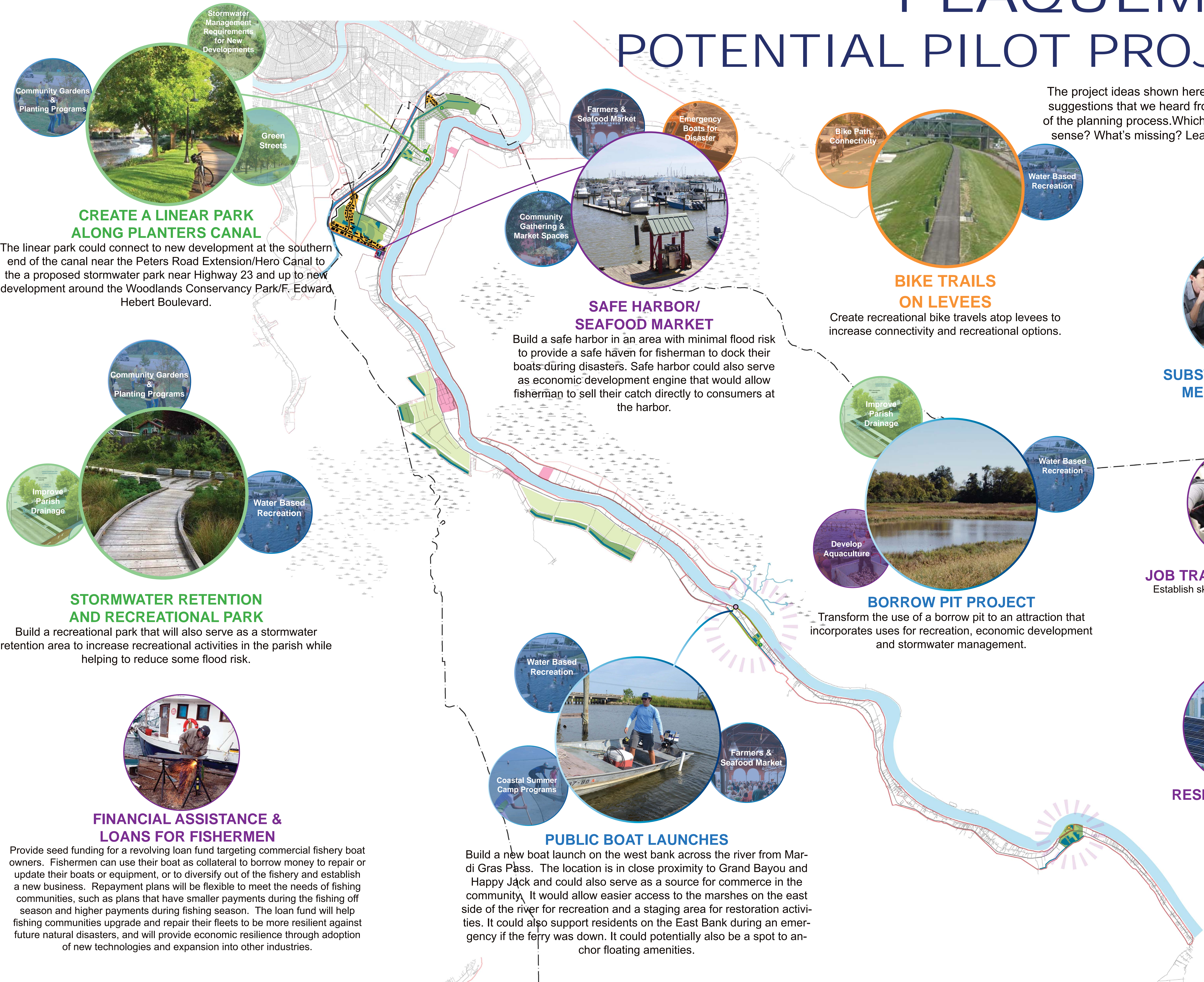
Highway 23 could be improved through better lighting and alleviating flooding on some portions of the road.



EMERGENCY BOATS FOR DISASTERS

PLAQUEMINES POTENTIAL PILOT PROJECTS

The project ideas shown here incorporate many of the top suggestions that we heard from residents over the course of the planning process. Which do you think make the most sense? What's missing? Leave us notes and comments!



CREATE A LINEAR PARK ALONG PLANTERS CANAL
The linear park could connect to new development at the southern end of the canal near the Peters Road Extension/Hero Canal to the a proposed stormwater park near Highway 23 and up to new development around the Woodlands Conservancy Park/F. Edward Hebert Boulevard.

SAFE HARBOR/ SEAFOOD MARKET
Build a safe harbor in an area with minimal flood risk to provide a safe haven for fisherman to dock their boats during disasters. Safe harbor could also serve as economic development engine that would allow fisherman to sell their catch directly to consumers at the harbor.

BIKE TRAILS ON LEVEES
Create recreational bike travels atop levees to increase connectivity and recreational options.

STORMWATER RETENTION AND RECREATIONAL PARK
Build a recreational park that will also serve as a stormwater retention area to increase recreational activities in the parish while helping to reduce some flood risk.

BORROW PIT PROJECT
Transform the use of a borrow pit to an attraction that incorporates uses for recreation, economic development and stormwater management.

PUBLIC BOAT LAUNCHES
Build a new boat launch on the west bank across the river from Mardi Gras Pass. The location is in close proximity to Grand Bayou and Happy Jack and could also serve as a source for commerce in the community. It would allow easier access to the marshes on the east side of the river for recreation and a staging area for restoration activities. It could also support residents on the East Bank during an emergency if the ferry was down. It could potentially also be a spot to anchor floating amenities.

FINANCIAL ASSISTANCE & LOANS FOR FISHERMEN
Provide seed funding for a revolving loan fund targeting commercial fishery boat owners. Fishermen can use their boat as collateral to borrow money to repair or update their boats or equipment, or to diversify out of the fishery and establish a new business. Repayment plans will be flexible to meet the needs of fishing communities, such as plans that have smaller payments during the fishing off season and higher payments during fishing season. The loan fund will help fishing communities upgrade and repair their fleets to be more resilient against future natural disasters, and will provide economic resilience through adoption of new technologies and expansion into other industries.

SUBSTANCE ABUSE & MENTAL HEALTH SUPPORT

JOB TRAINING PROGRAMS
Establish skill specific workforce training programs.

RESILIENT ENERGY PROJECT