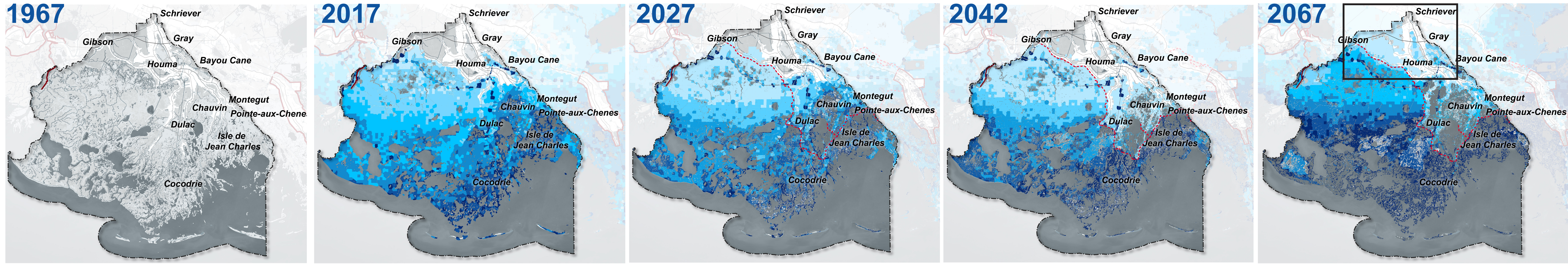


PARISH SCALE FLOOD RISK AND LAND LOSS OVER TIME



AGES OF GENERATIONS

SENIORS LOST GENERATION (b. 1946 - 1964)	MID-LIFE G.I. GENERATION (b. 1946 - 1964)	YOUNG ADULTS SILENT GENERATION (b. 1946 - 1964)	CHILDREN BABY BOOMERS (b. 1946 - 1964)
--	---	---	--

AGES OF GENERATIONS

SENIORS SILENT GENERATION (b. 1946 - 1964)	MID-LIFE BABY BOOMERS GENERATION X (b. 1965 - 1981)	YOUNG ADULTS MILLENNIALS (b. 1982 - 2000)	CHILDREN GENERATION Z (b. 2001 - 2020)
--	---	---	--

AGES OF GENERATIONS

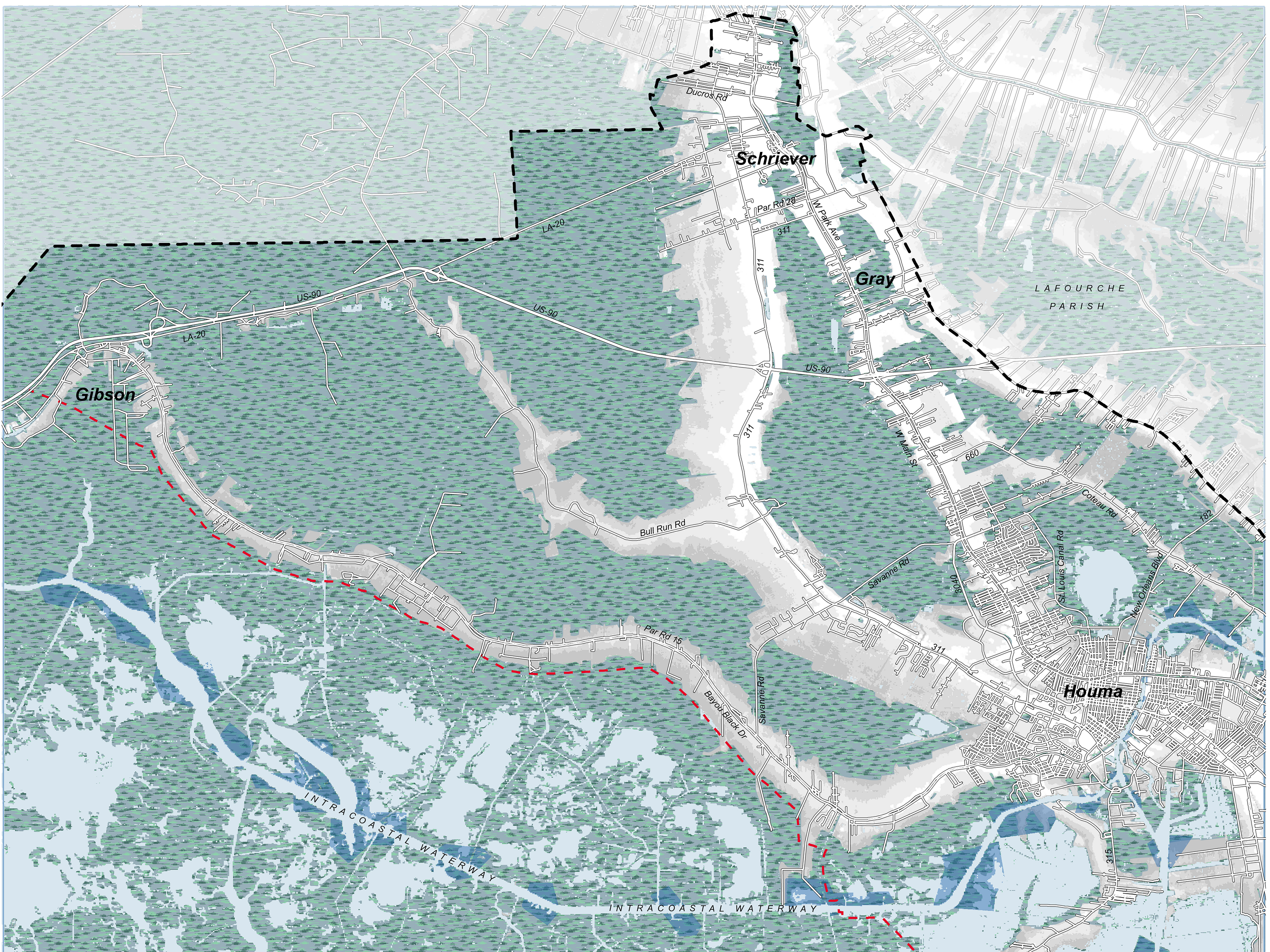
SENIORS BABY BOOMERS (b. 1946 - 1964)	MID-LIFE GENERATION X (b. 1965 - 1981)	YOUNG ADULTS MILLENNIALS (b. 1982 - 2000)	CHILDREN GENERATION Z (b. 2001 - 2020)
---	--	---	--

AGES OF GENERATIONS

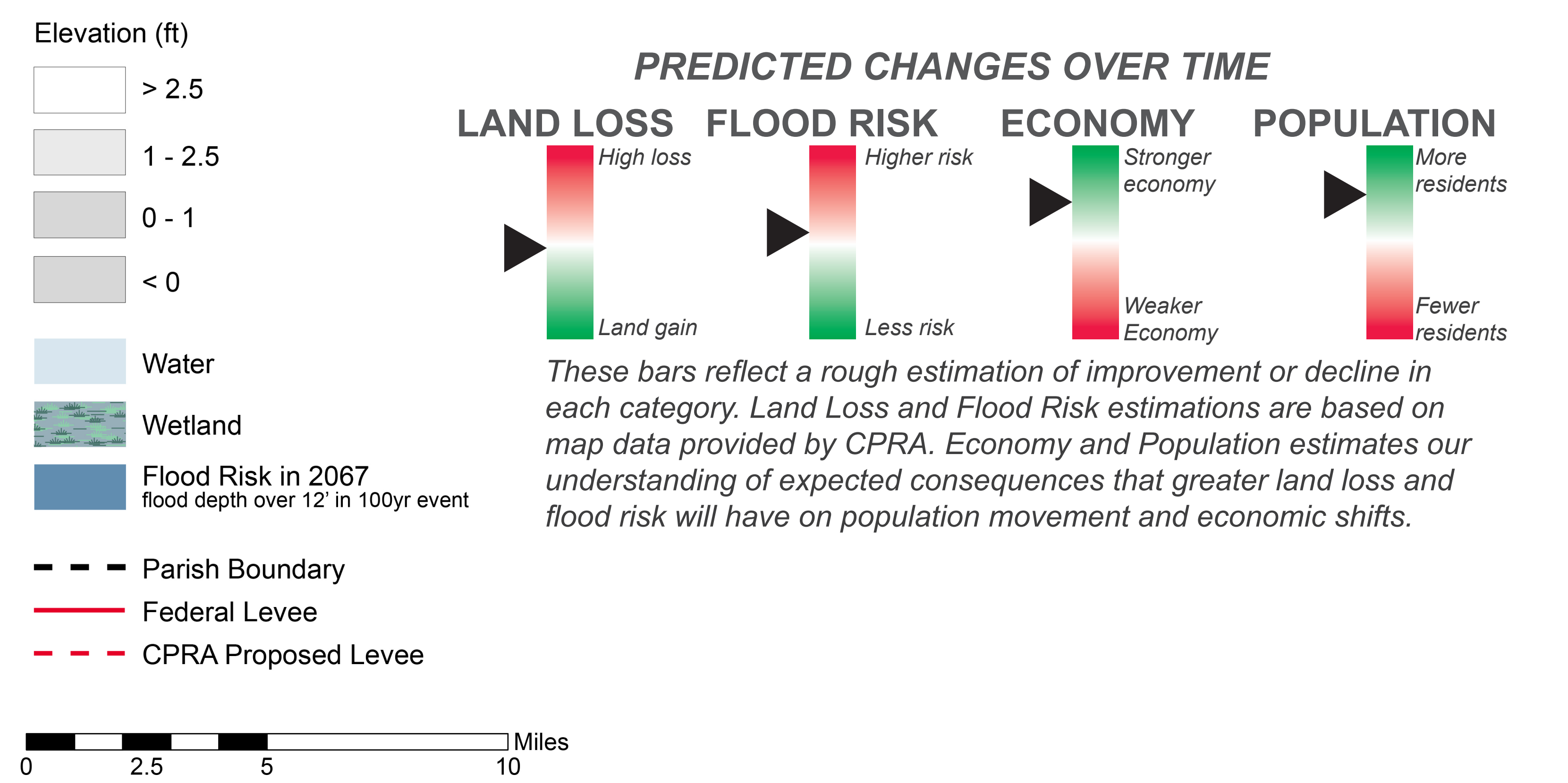
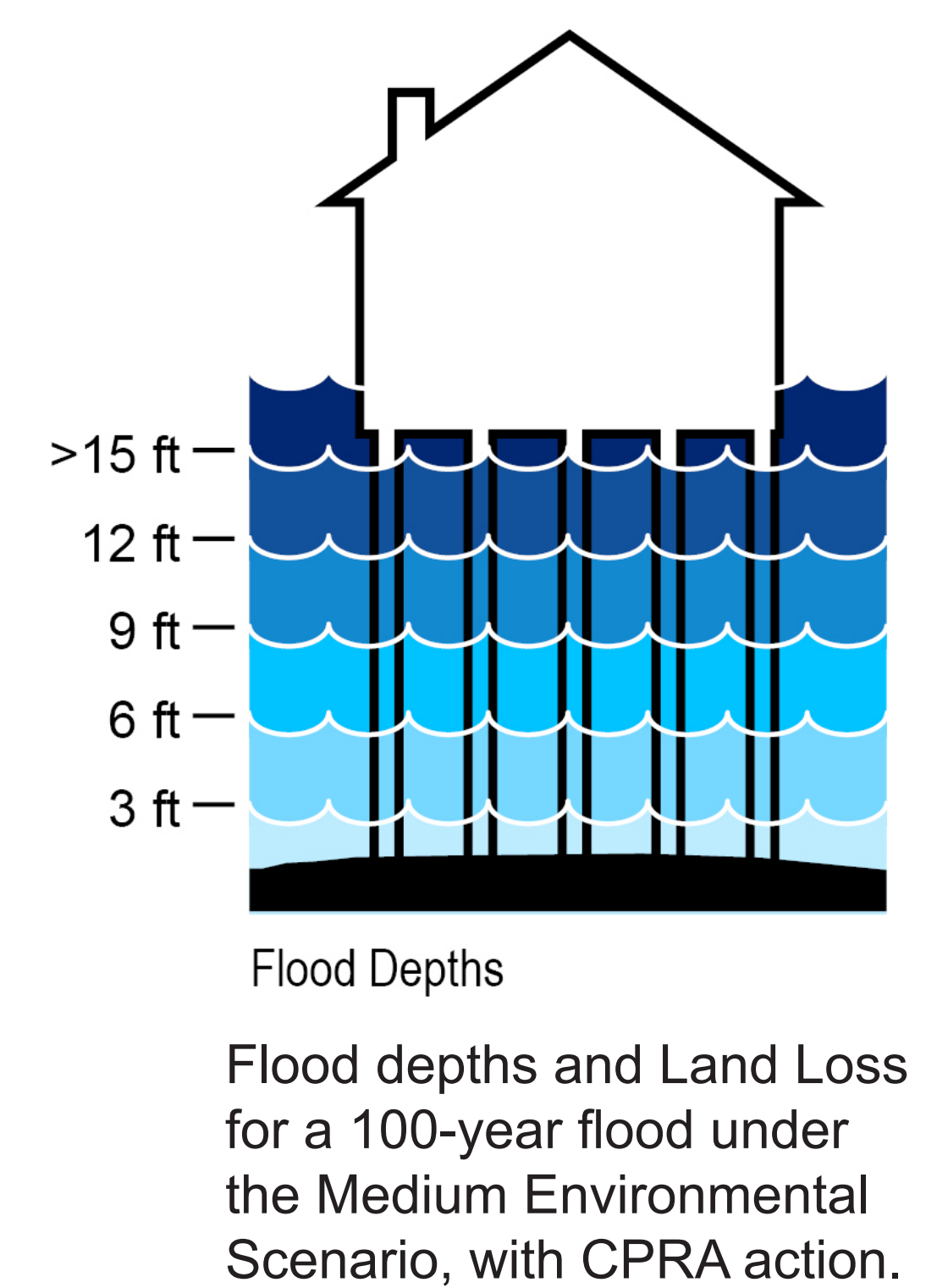
SENIORS BABY BOOMERS GENERATION X (b. 1946 - 1964)	MID-LIFE MILLENNIALS (b. 1982 - 2000)	YOUNG ADULTS GENERATION Z (b. 2001 - 2020)	CHILDREN GENERATION A (b. 2021 - 2040)
---	---	--	--

AGES OF GENERATIONS

SENIORS MILLENNIALS (b. 1982 - 2000)	MID-LIFE GENERATION Z (b. 2001 - 2020)	YOUNG ADULTS GENERATION A (b. 2021 - 2040)	CHILDREN GENERATION ? (b. 2041 - 2060)
--	--	--	--



NOTES AND COMMENTS



Estimate of land loss and 12 ft. + flood depths for a 100-year flood under the Medium Environmental Scenario in 2067, with CPRA action. This data was originally produced by CPRA to inform the 2017 Coastal Master Plan.