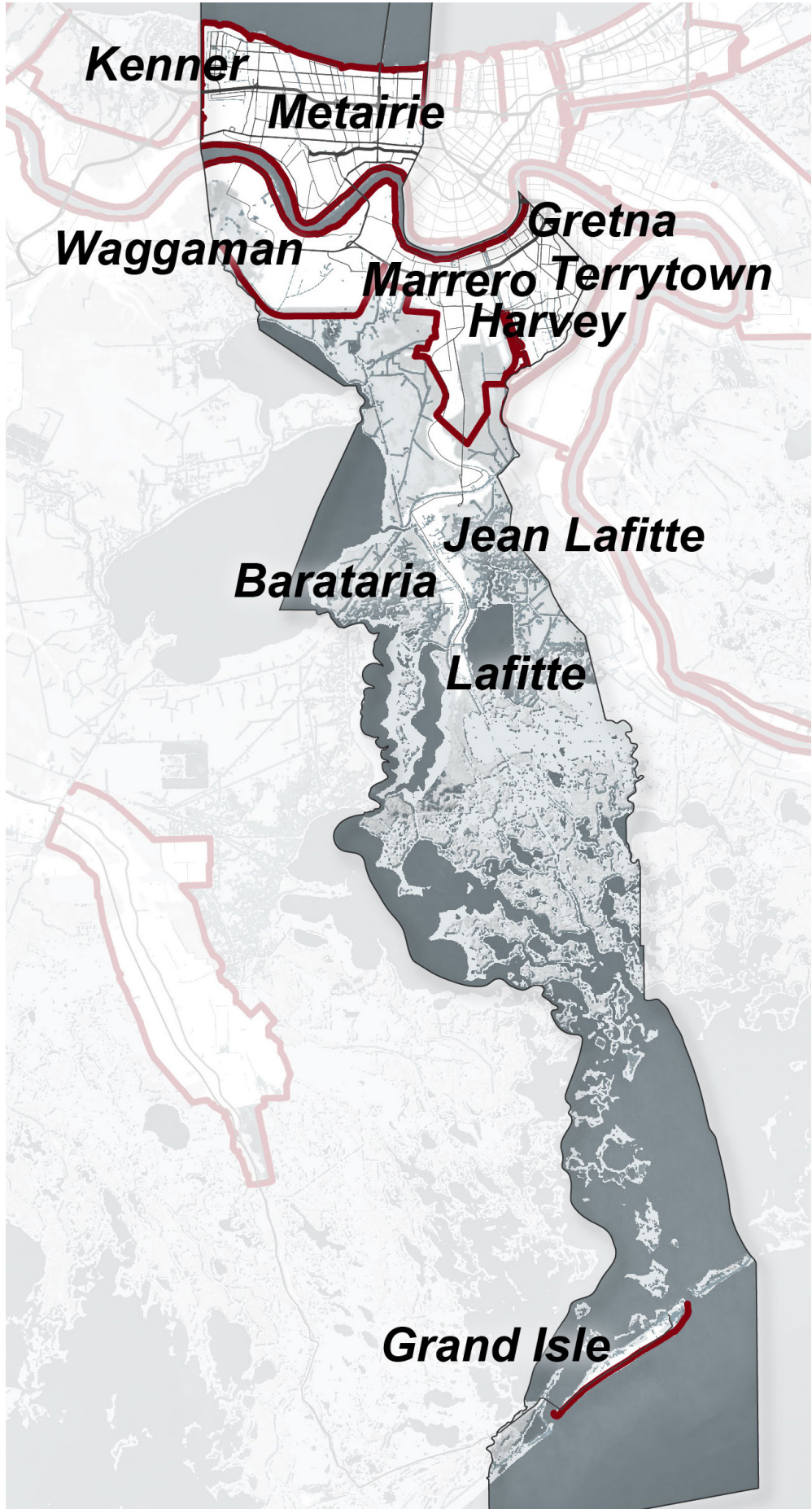
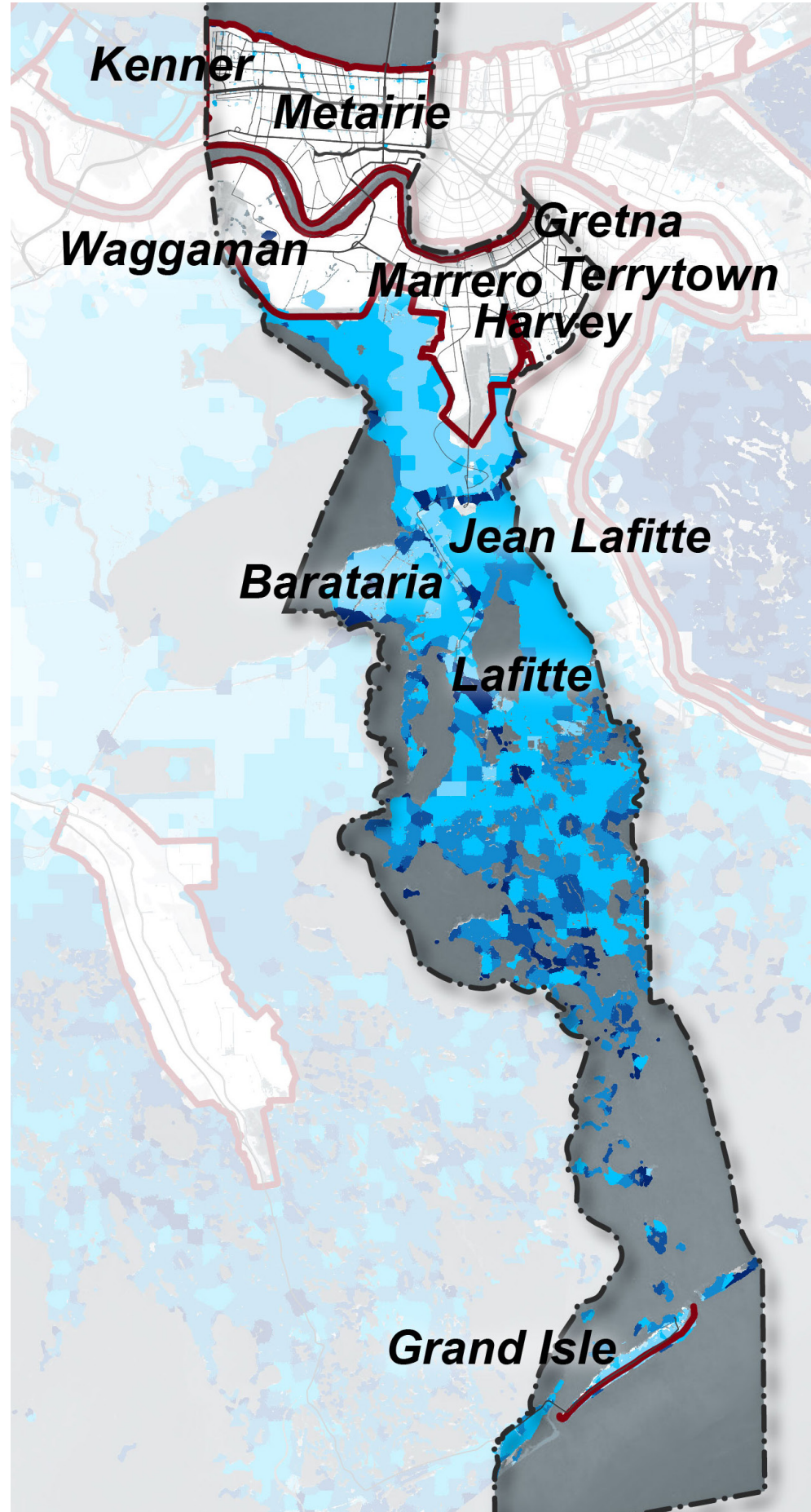


PARISH SCALE FLOOD RISK AND LAND LOSS OVER TIME

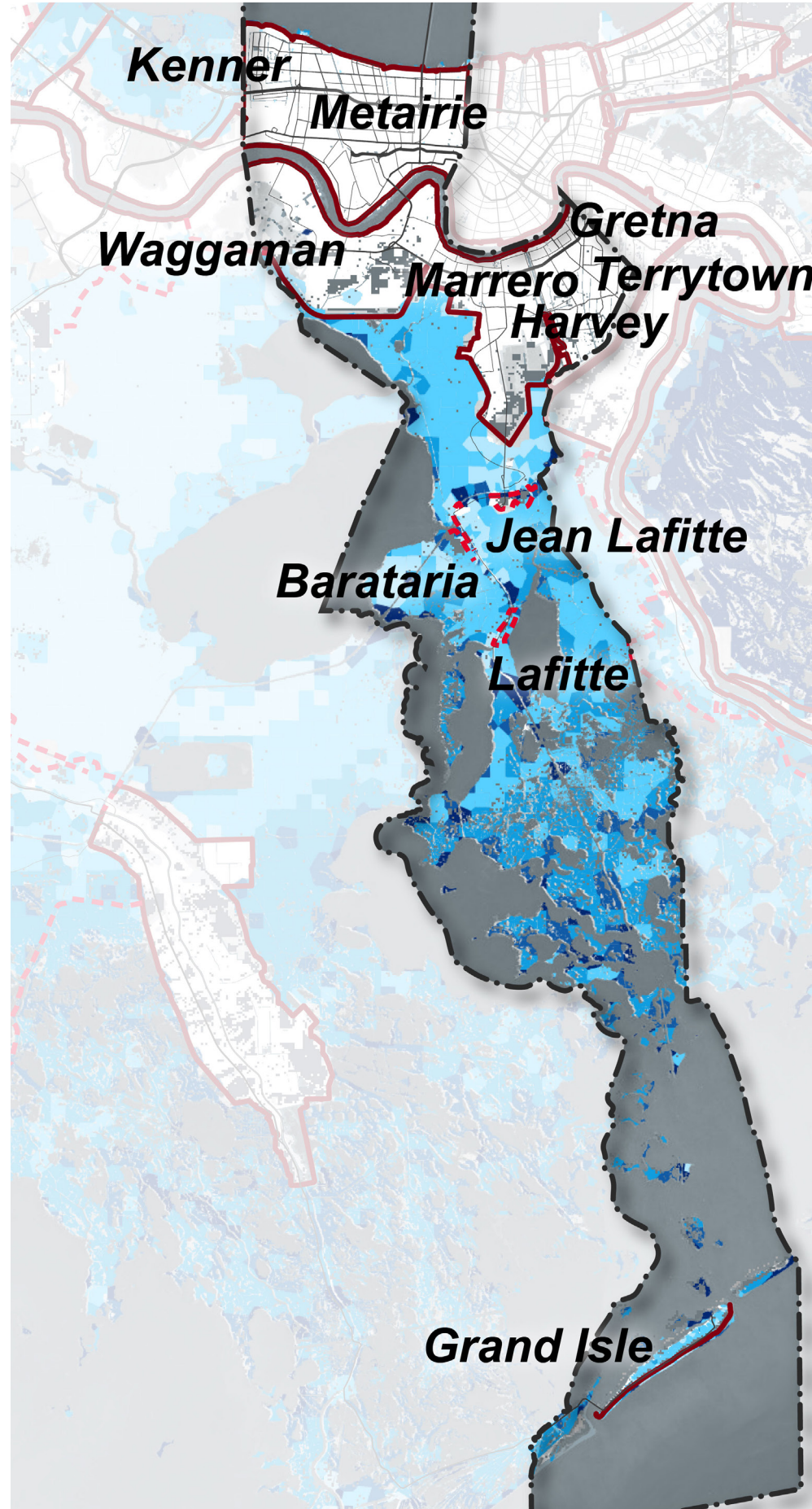
1967



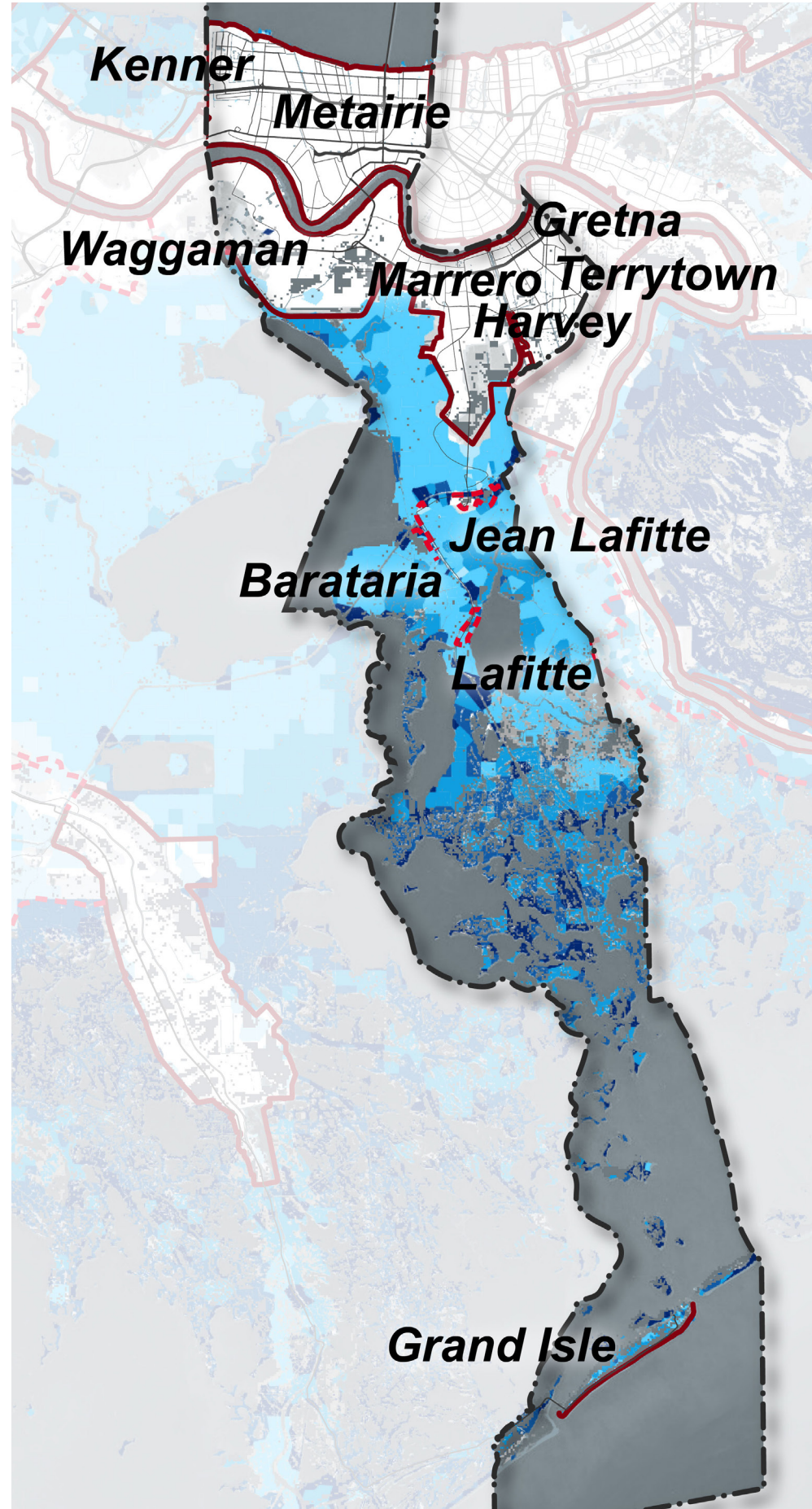
2017



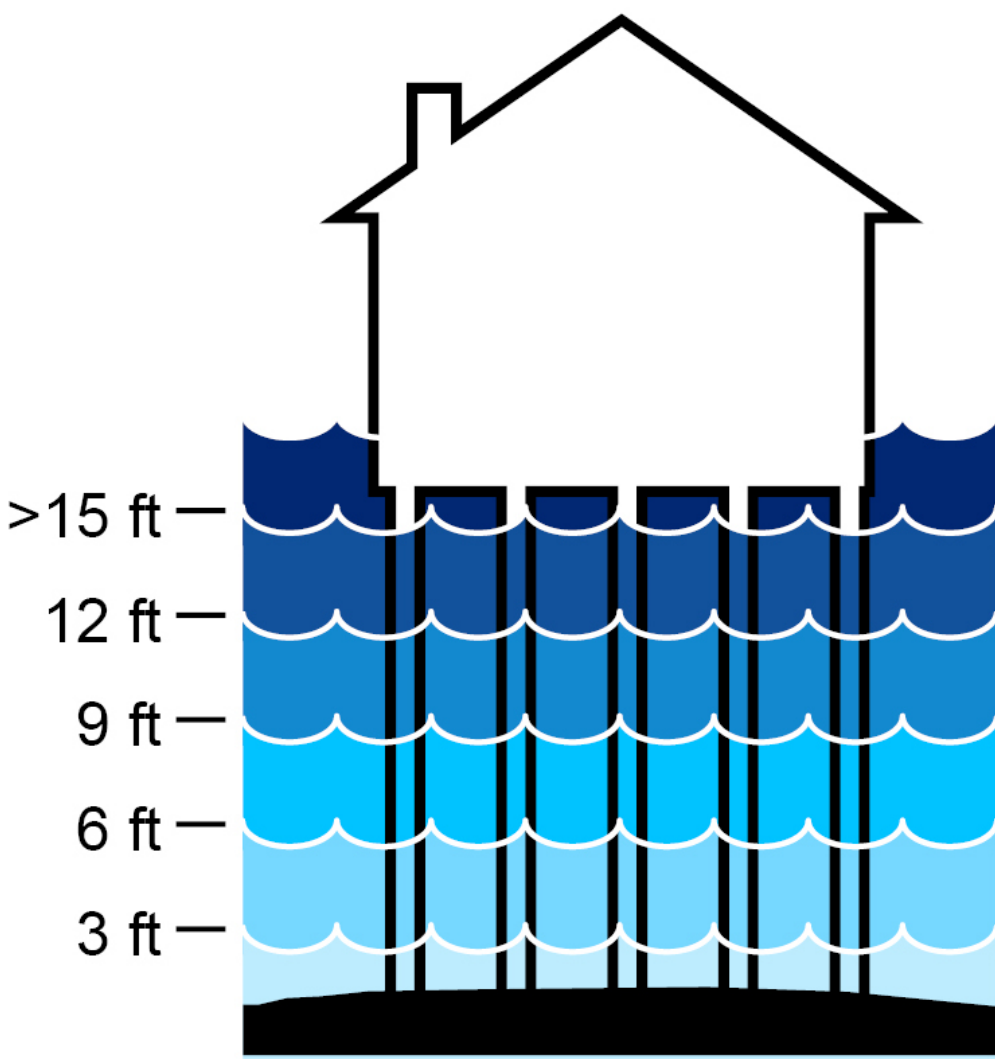
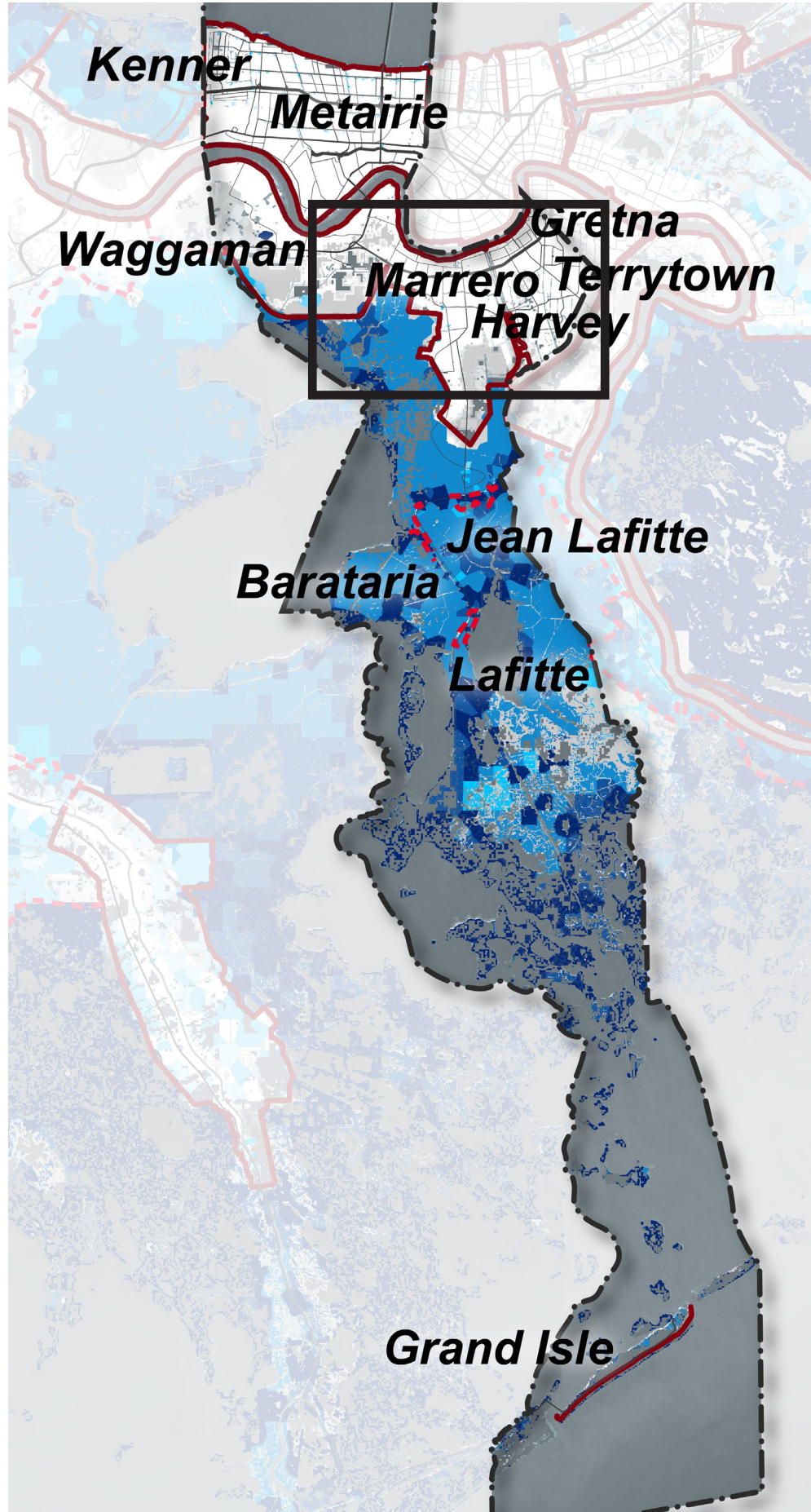
2027



2042



2067



Flood Depths  
Flood depths and Land Loss  
for a 100-year flood under  
the Medium Environmental  
Scenario, with CPRA action.

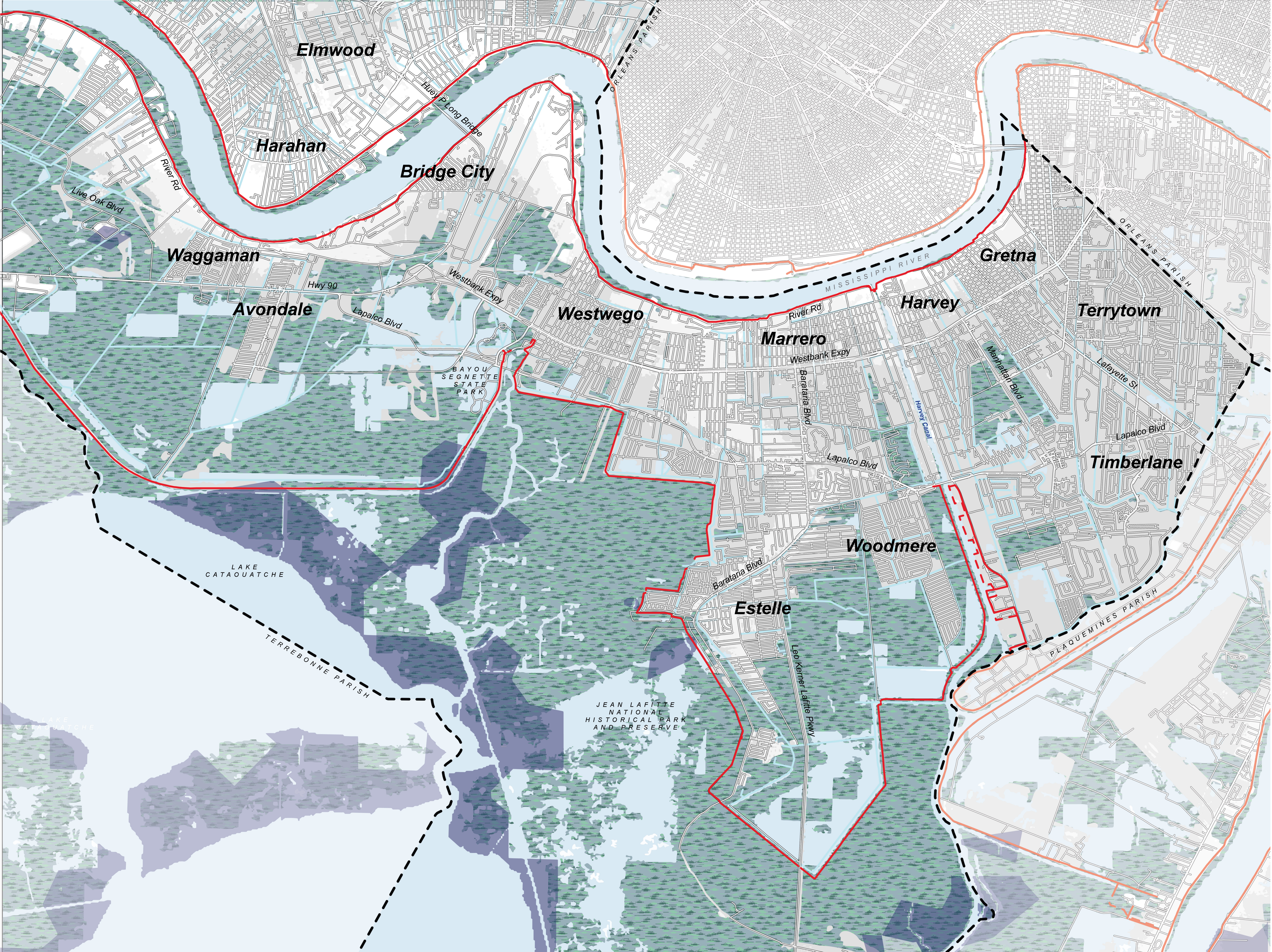
AGES OF GENERATIONS			
SENIORS LOST GENERATION	MID-LIFE G.I. GENERATION	YOUNG ADULTS SILENT GENERATION	CHILDREN BABY BOOMERS (b. 1946 - 1964)

AGES OF GENERATIONS			
SENIORS SILENT GENERATION	MID-LIFE BABY BOOMERS GENERATION X	YOUNG ADULTS MILLENNIALS (b. 1982 - 2000)	CHILDREN GENERATION Z (b. 2001 - 2020)

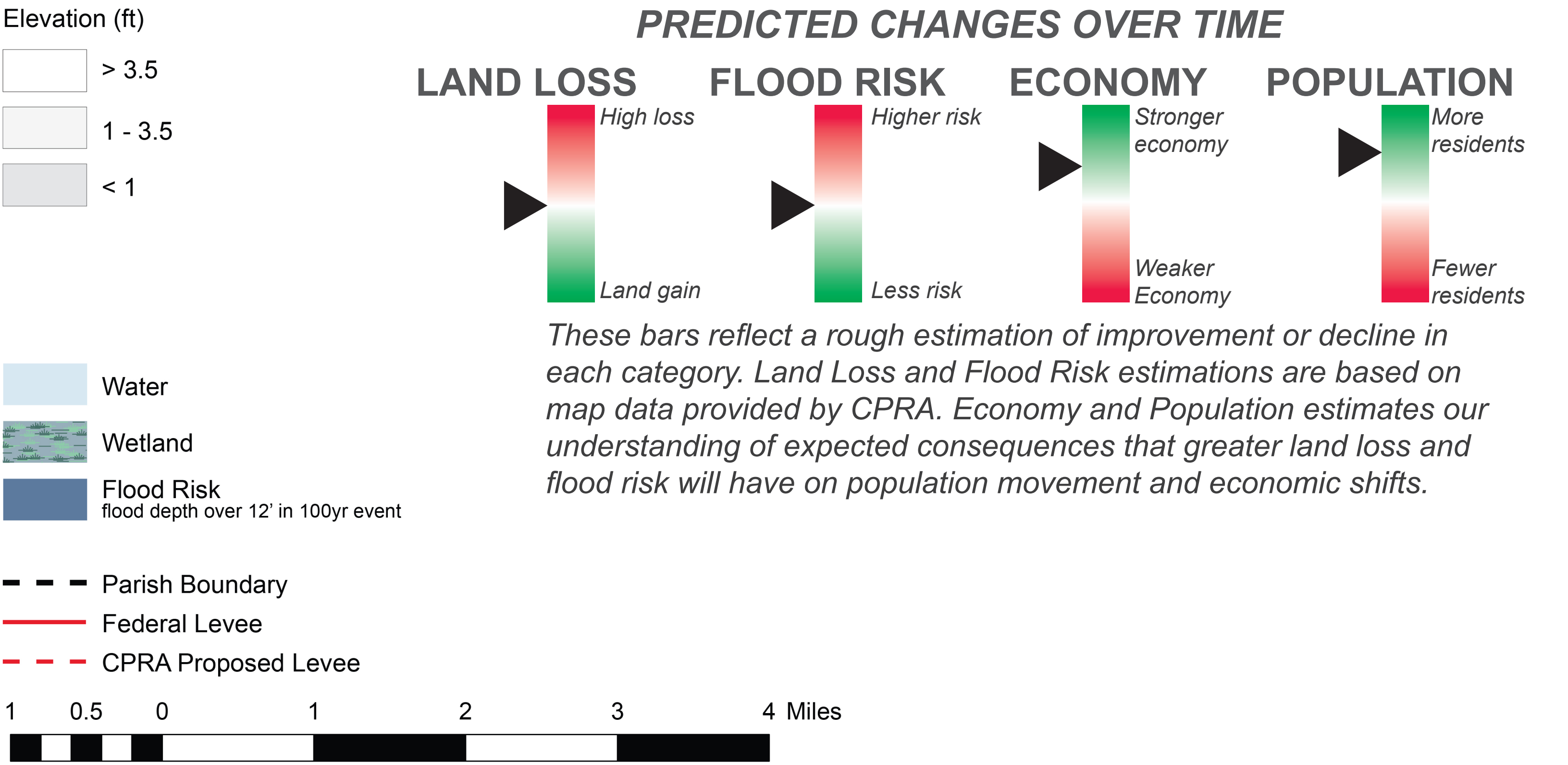
AGES OF GENERATIONS			
SENIORS BABY BOOMERS (b. 1946 - 1964)	MID-LIFE GENERATION X (b. 1965 - 1981)	YOUNG ADULTS MILLENNIALS (b. 1982 - 2000)	CHILDREN GENERATION Z GENERATION A

AGES OF GENERATIONS			
SENIORS BABY BOOMERS GENERATION X	MID-LIFE MILLENNIALS (b. 1982 - 2000)	YOUNG ADULTS GENERATION Z (b. 2001 - 2020)	CHILDREN GENERATION A (b. 2021 - 2040)

AGES OF GENERATIONS			
SENIORS MILLENNIALS (b. 1982 - 2000)	MID-LIFE GENERATION Z (b. 2001 - 2020)	YOUNG ADULTS GENERATION A (b. 2021 - 2040)	CHILDREN GENERATION ? (b. 2041 - 2060)



NOTES AND COMMENTS



Estimate of land loss and 12 ft. + flood depths for a 100-year flood under the Medium Environmental Scenario in 2067, with CPRA action. This data was originally produced by CPRA to inform the 2017 Coastal Master Plan.