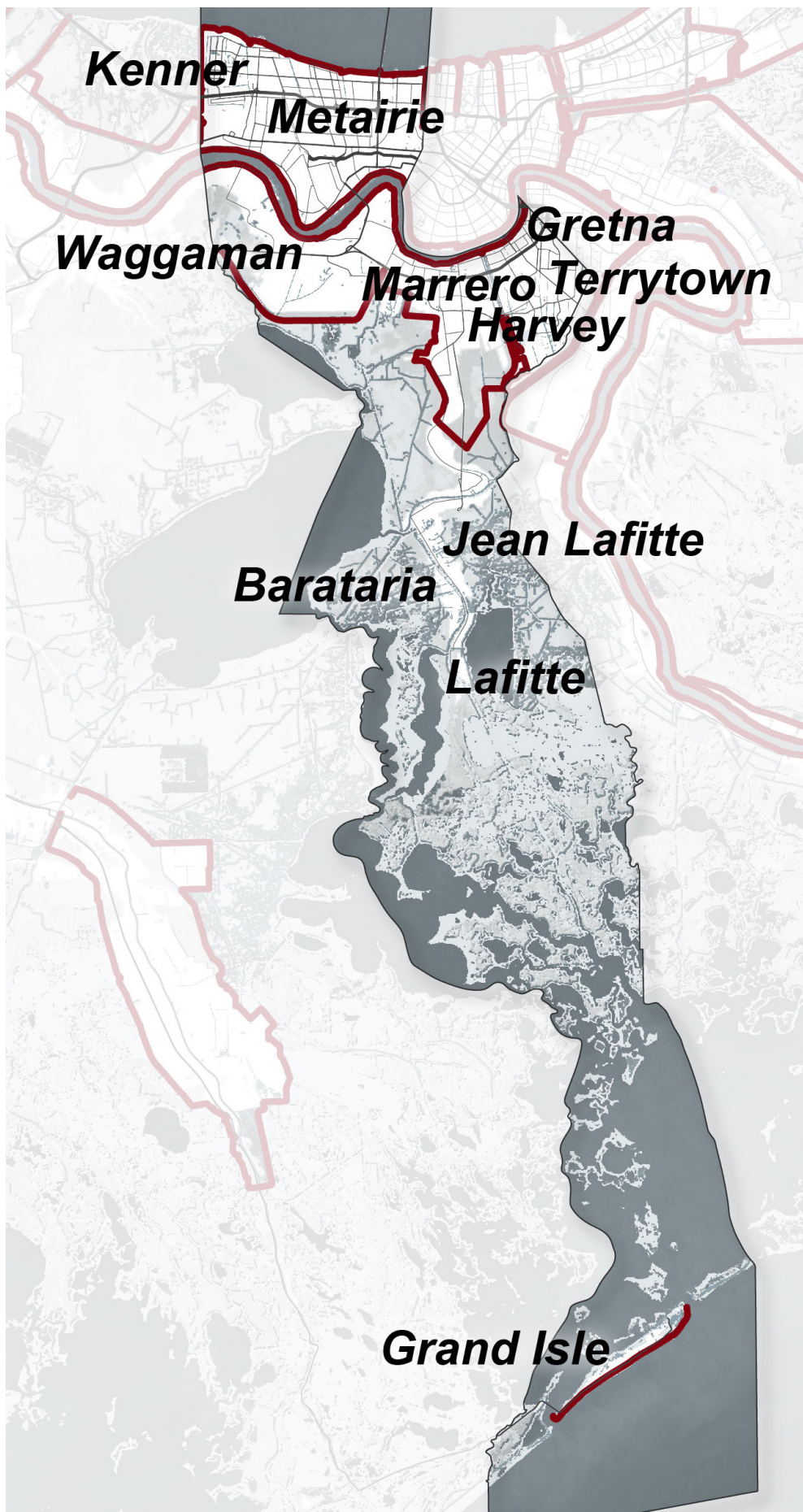
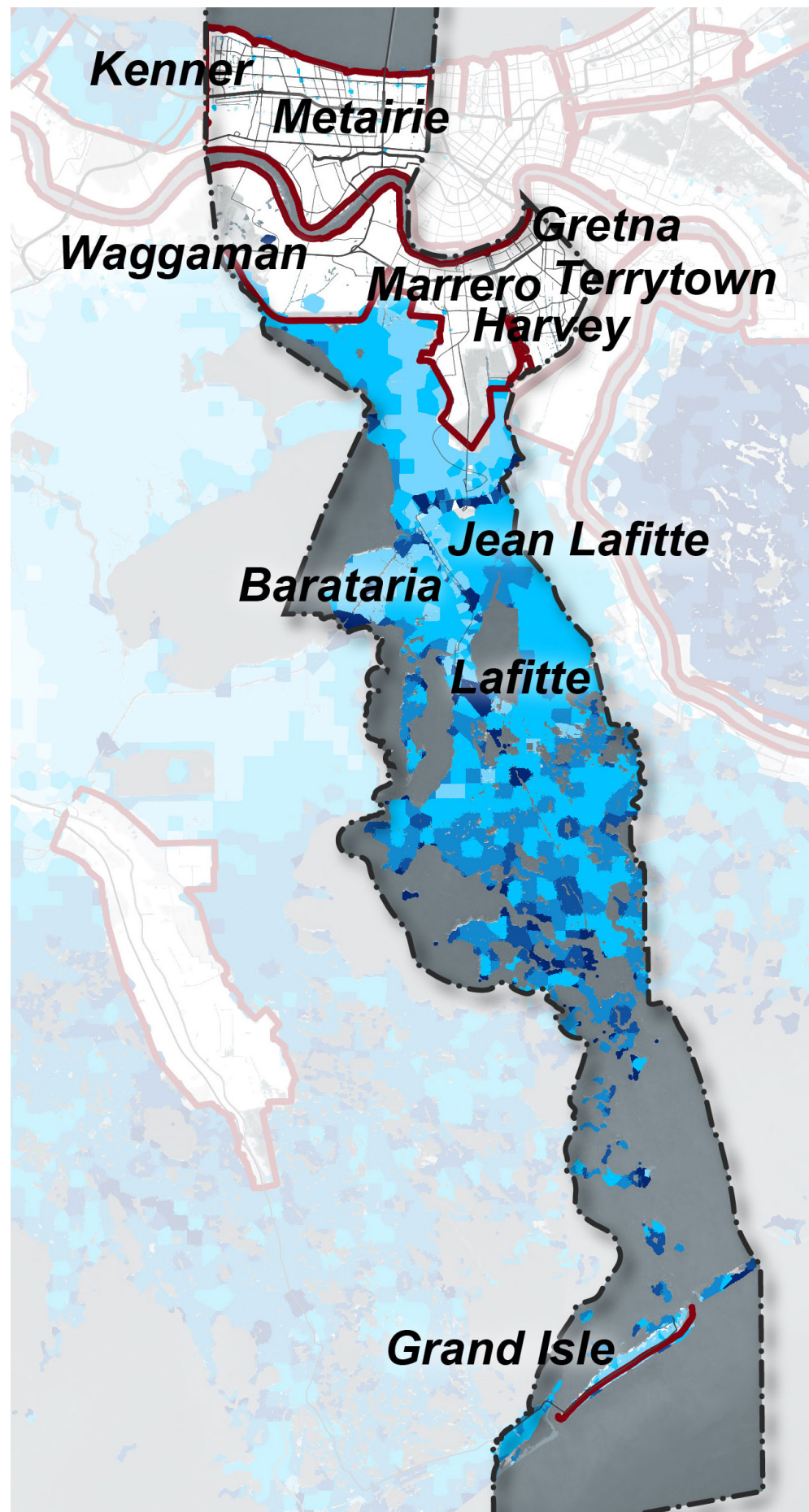


PARISH SCALE FLOOD RISK AND LAND LOSS OVER TIME

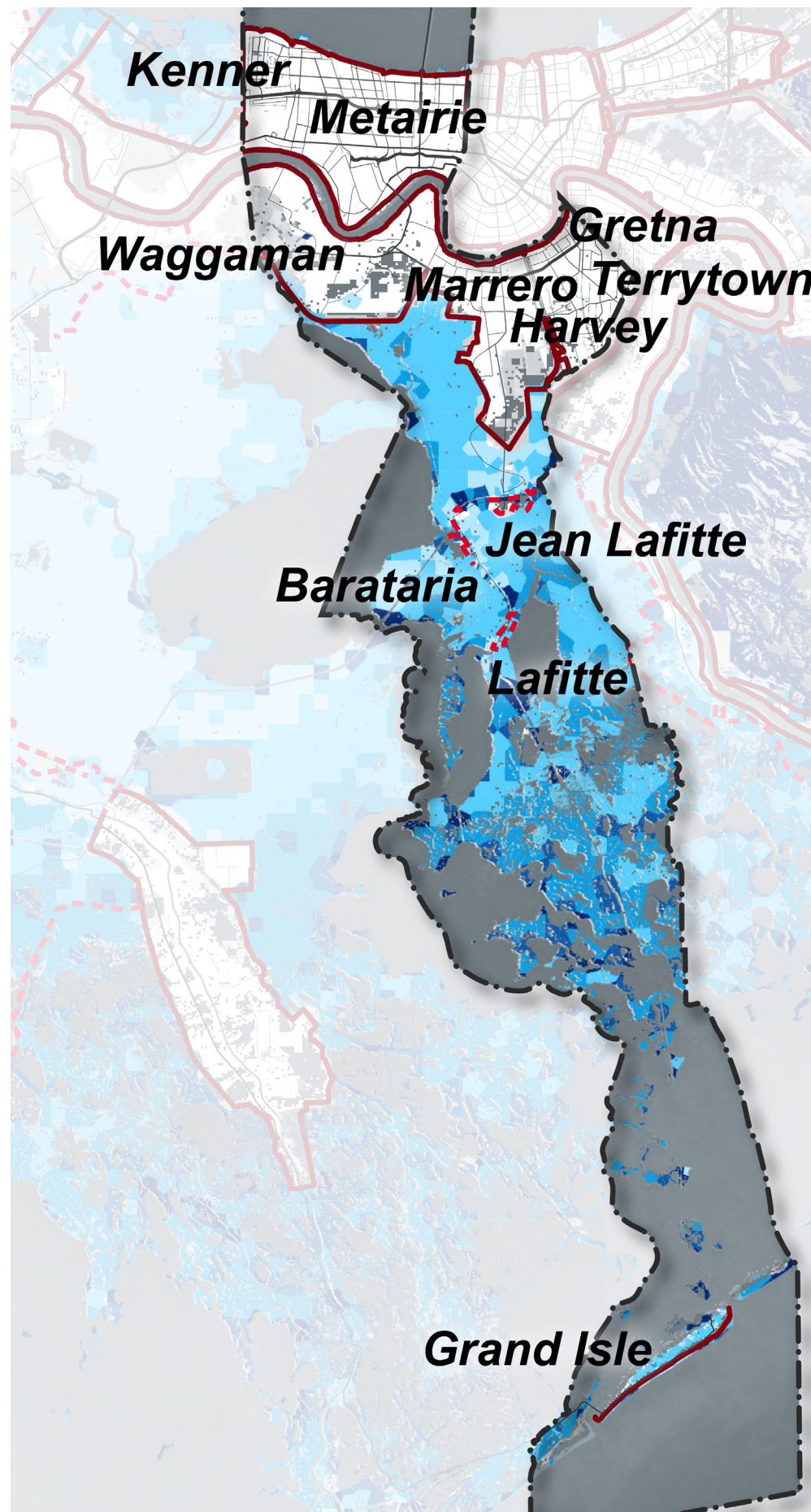
1967



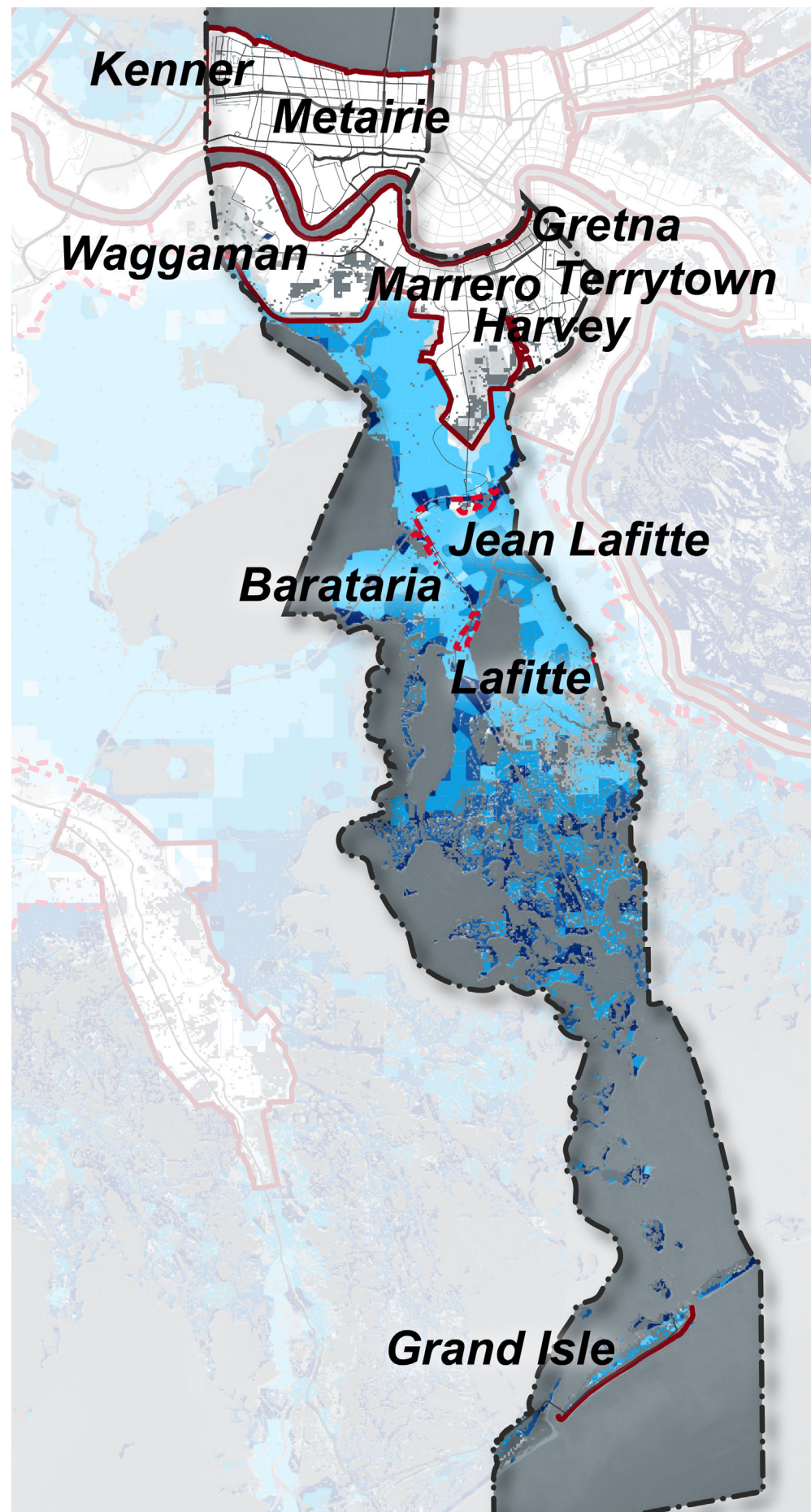
2017



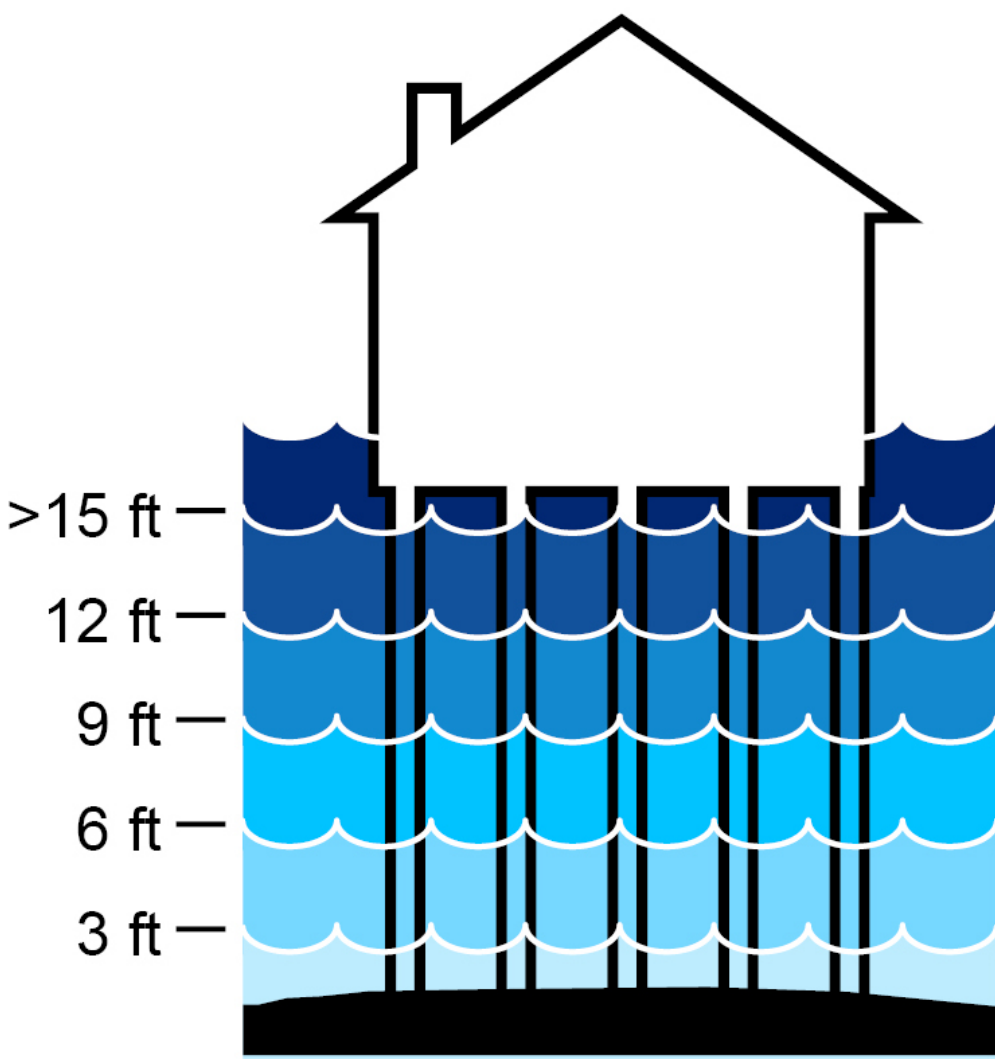
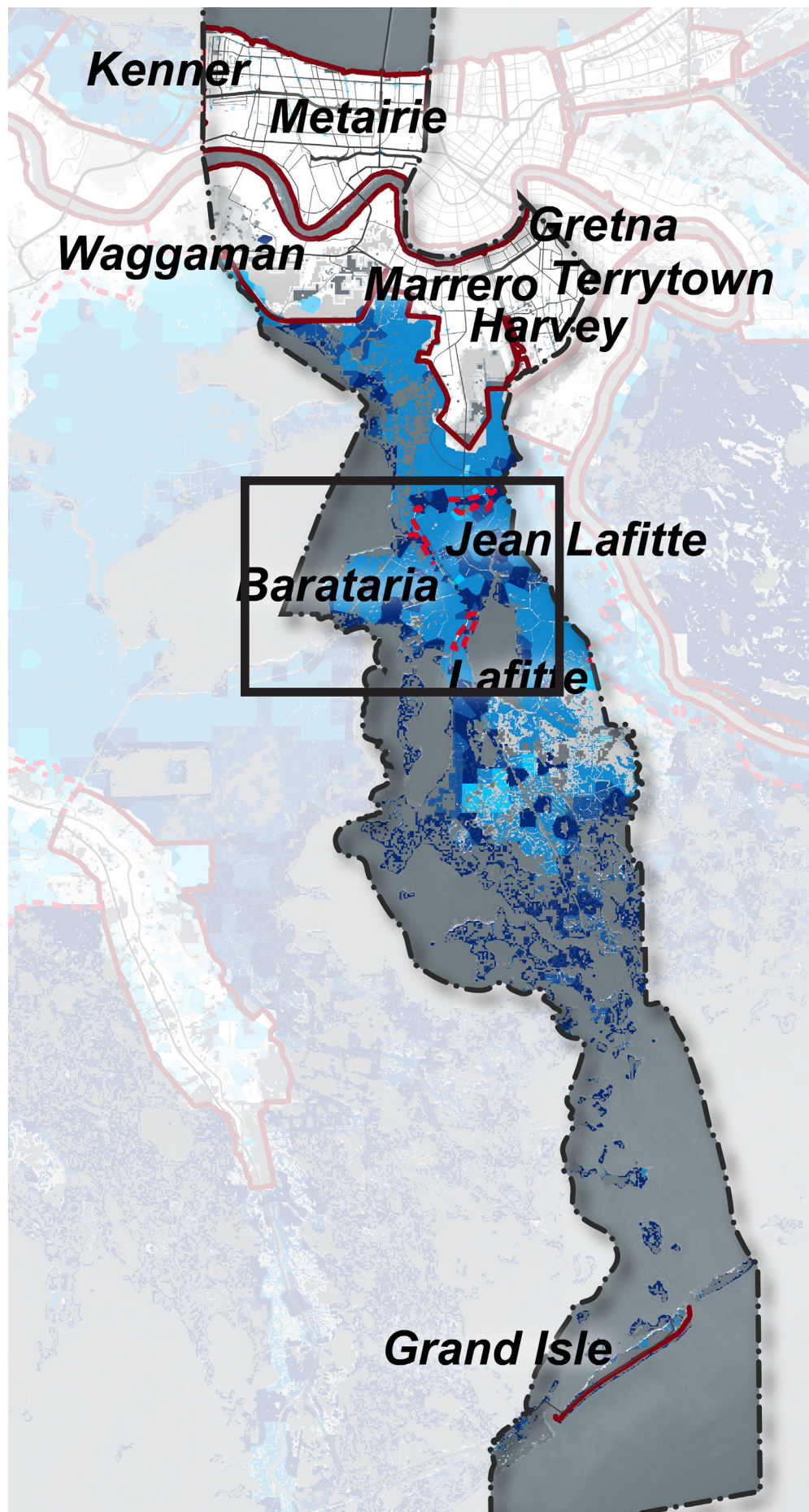
2027



2042



2067



Flood depths and Land Loss for a 100-year flood under the Medium Environmental Scenario, with CPRA action.

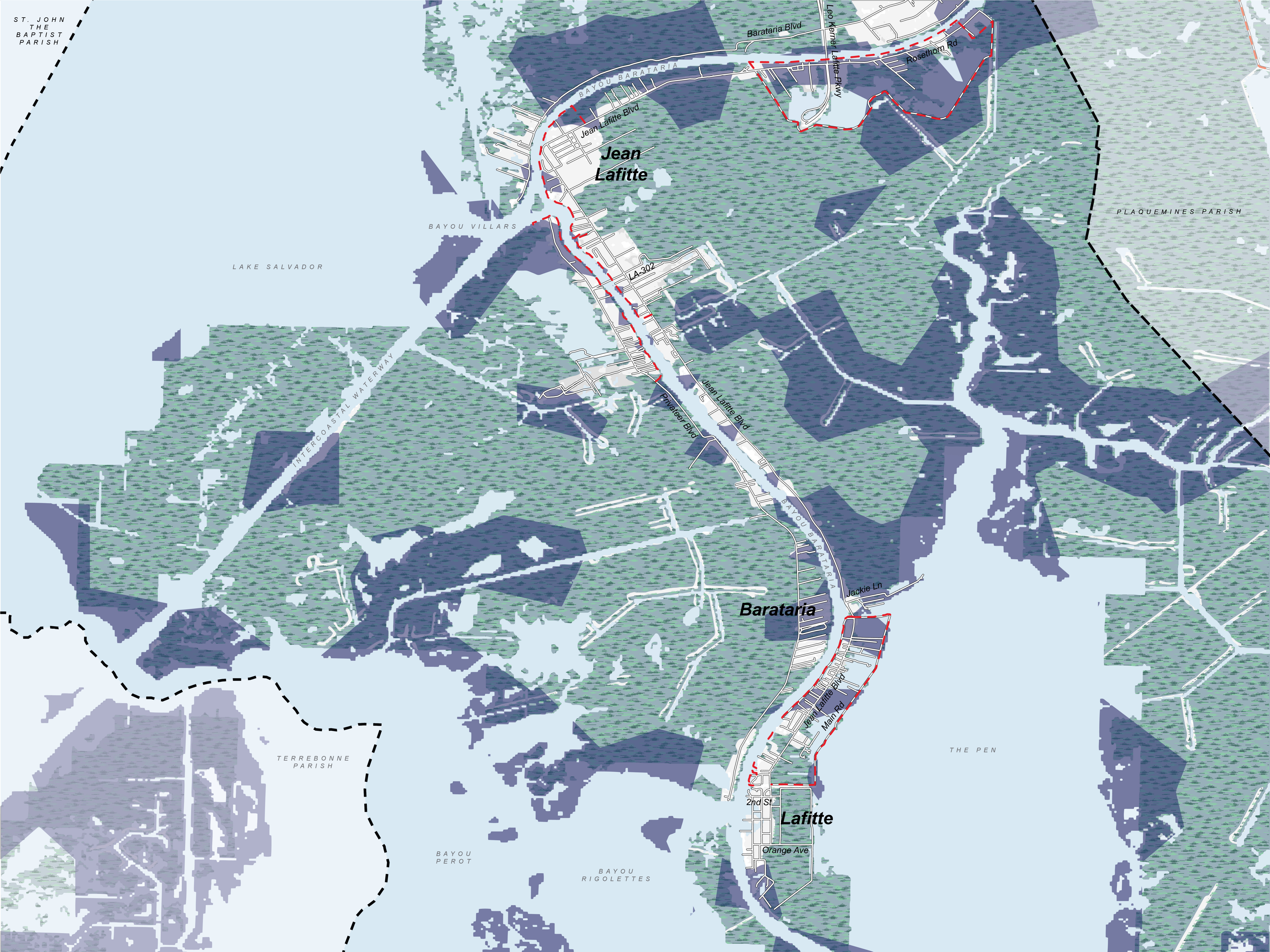
| AGES OF GENERATIONS | | | |
|---------------------|-----------------|-------------------|-------------------------------|
| SENIORS | MID-LIFE | YOUNG ADULTS | CHILDREN |
| LOST GENERATION | G.I. GENERATION | SILENT GENERATION | BABY BOOMERS (b. 1946 - 1964) |

| AGES OF GENERATIONS | | | |
|---------------------|--|------------------------------|-------------------------------|
| SENIORS | MID-LIFE | YOUNG ADULTS | CHILDREN |
| SILENT GENERATION | BABY BOOMERS GENERATION X (b. 1965 - 1981) | MILLENNIALS (b. 1982 - 2000) | GENERATION Z (b. 2001 - 2020) |

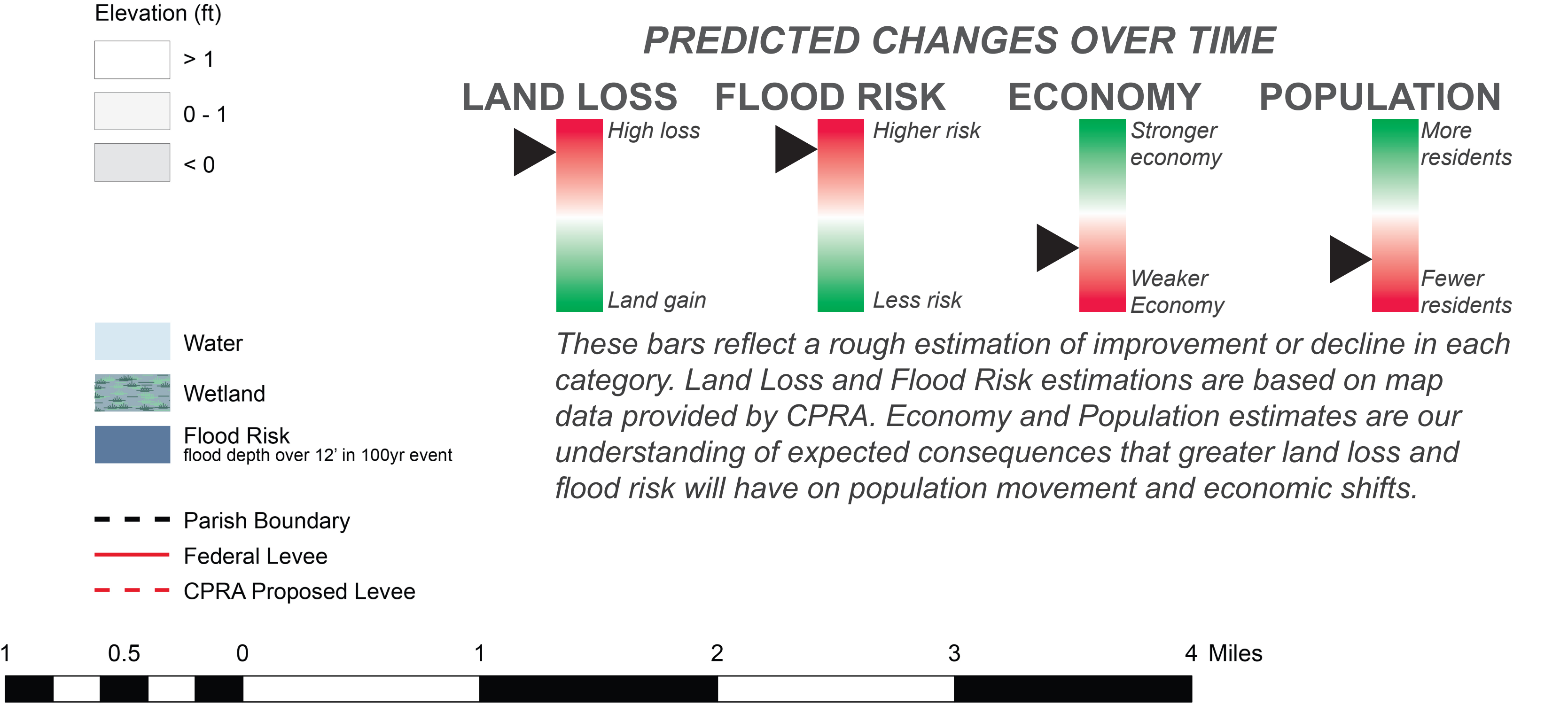
| AGES OF GENERATIONS | | | |
|-------------------------------|-------------------------------|------------------------------|--|
| SENIORS | MID-LIFE | YOUNG ADULTS | CHILDREN |
| BABY BOOMERS (b. 1946 - 1964) | GENERATION X (b. 1965 - 1981) | MILLENNIALS (b. 1982 - 2000) | GENERATION Z GENERATION A (b. 2021 - 2040) |

| AGES OF GENERATIONS | | | |
|--|------------------------------|-------------------------------|-------------------------------|
| SENIORS | MID-LIFE | YOUNG ADULTS | CHILDREN |
| BABY BOOMERS GENERATION X (b. 1965 - 1981) | MILLENNIALS (b. 1982 - 2000) | GENERATION Z (b. 2001 - 2020) | GENERATION A (b. 2021 - 2040) |

| AGES OF GENERATIONS | | | |
|------------------------------|-------------------------------|-------------------------------|-------------------------------|
| SENIORS | MID-LIFE | YOUNG ADULTS | CHILDREN |
| MILLENNIALS (b. 1982 - 2000) | GENERATION Z (b. 2001 - 2020) | GENERATION A (b. 2021 - 2040) | GENERATION ? (b. 2041 - 2060) |



NOTES AND COMMENTS



Estimate of land loss and 12 ft. + flood depths for a 100-year flood under the Medium Environmental Scenario in 2067, with CPRA action. This data was originally produced by CPRA to inform the 2017 Coastal Master Plan.