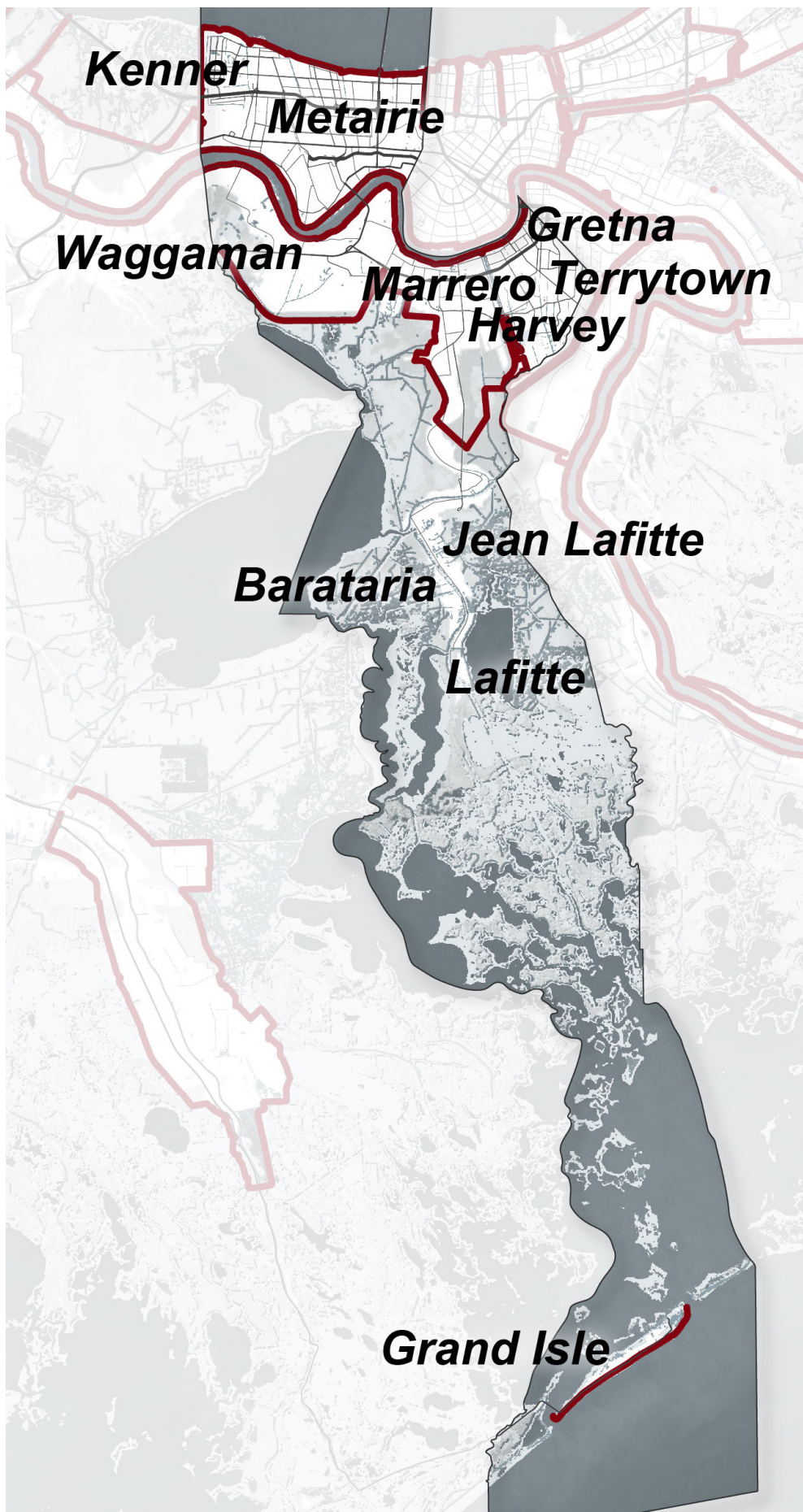
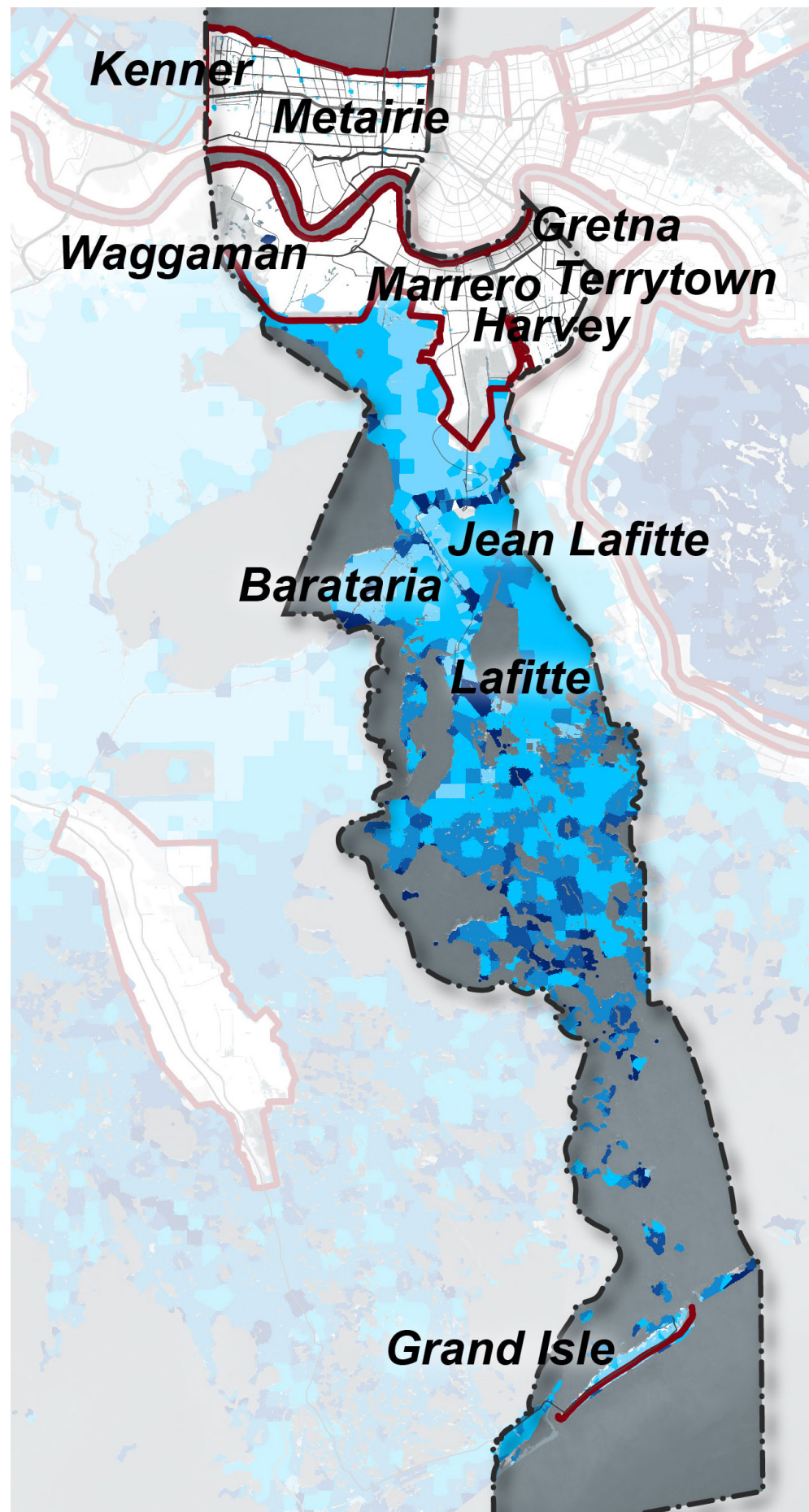


PARISH SCALE FLOOD RISK AND LAND LOSS OVER TIME

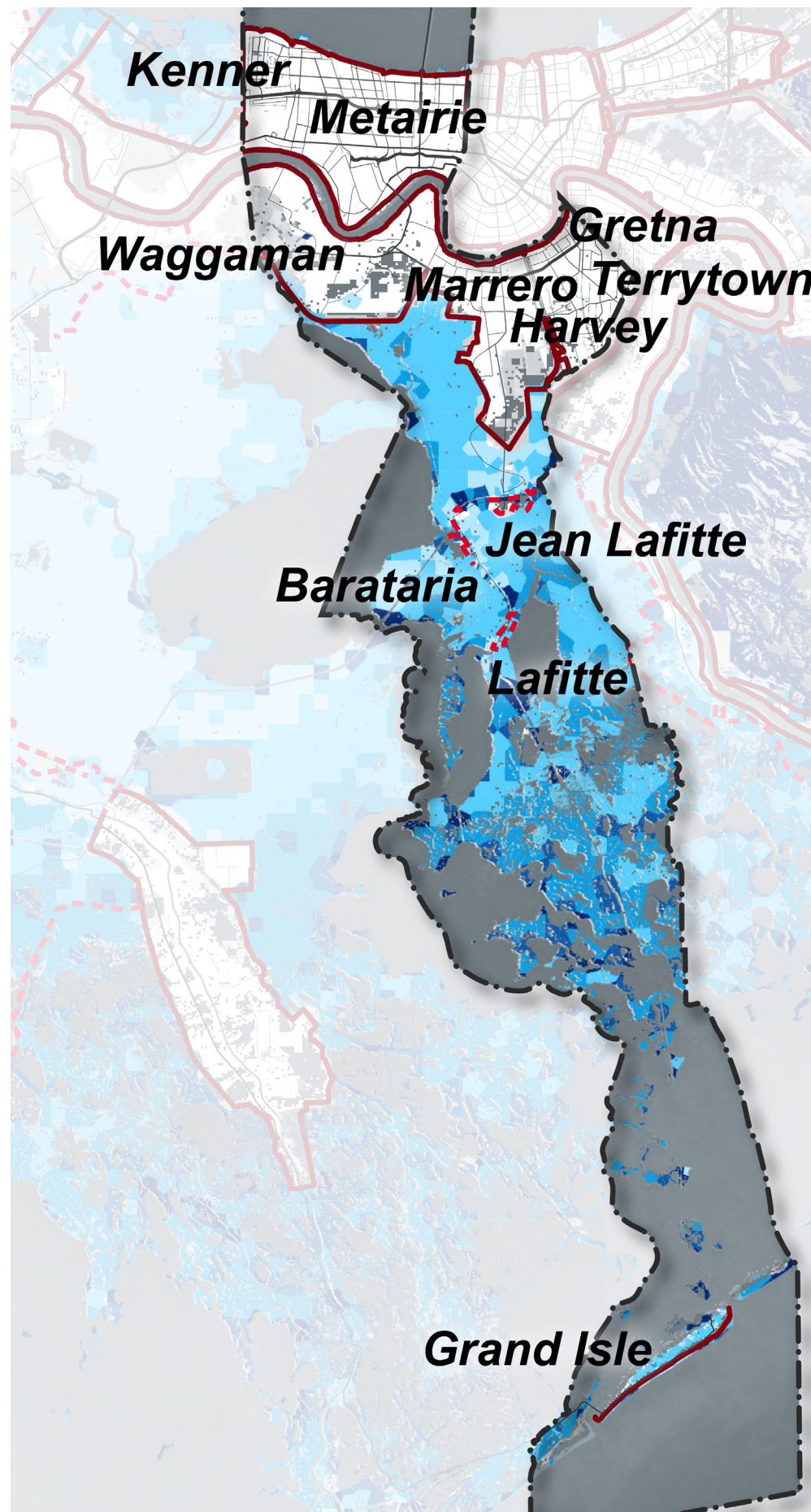
1967



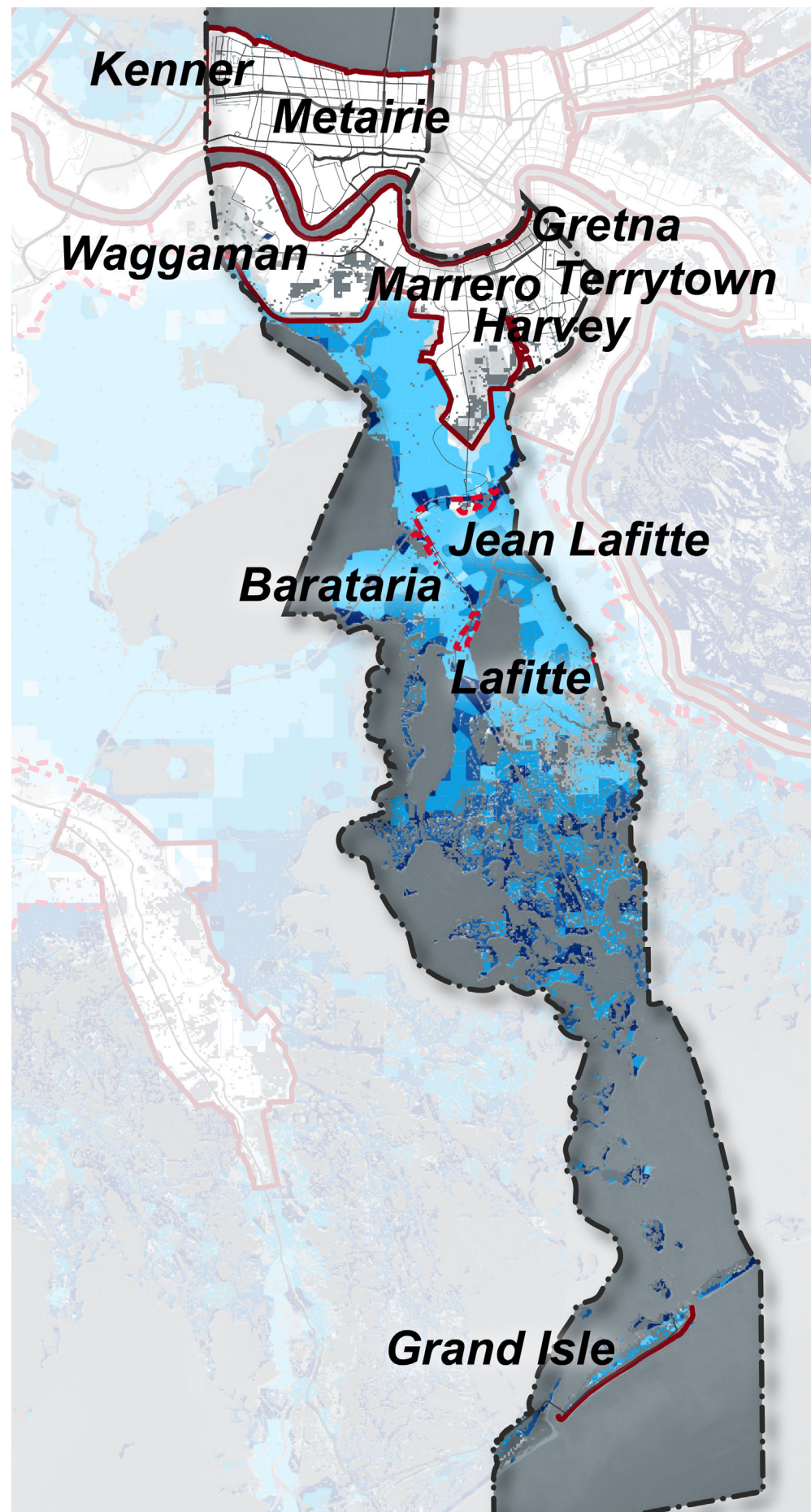
2017



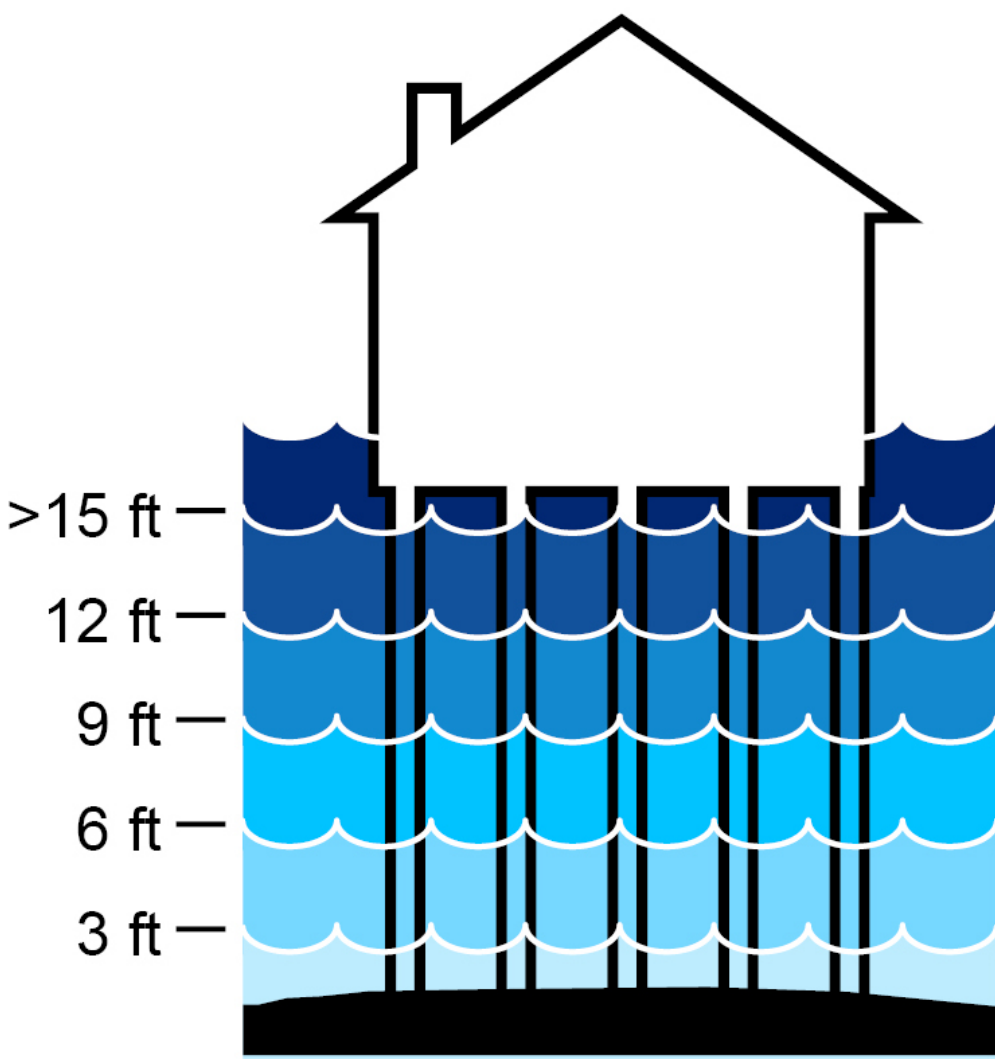
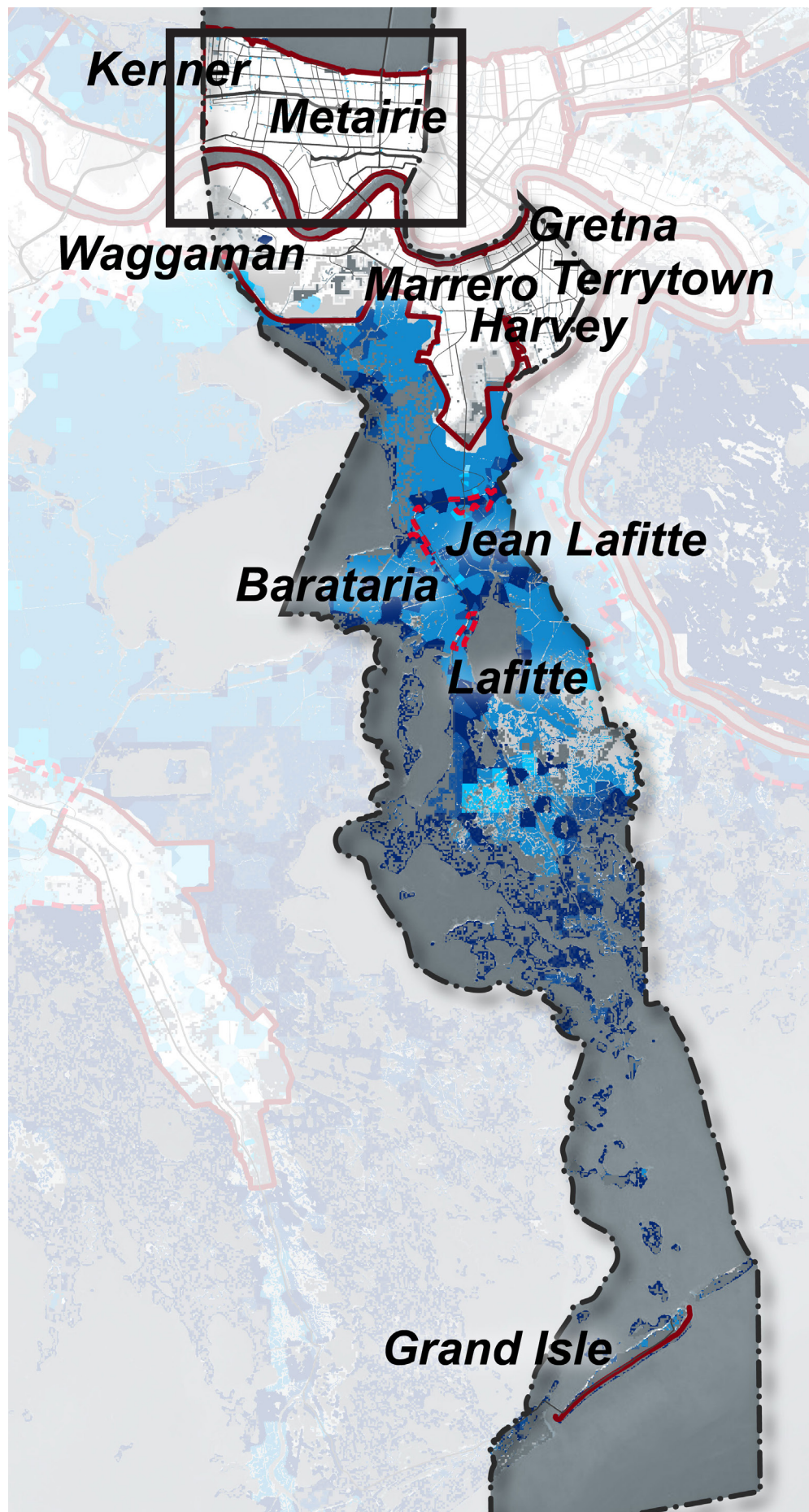
2027



2042



2067



Flood Depths
Flood depths and Land Loss
for a 100-year flood under
the Medium Environmental
Scenario, with CPRA action.

AGES OF GENERATIONS			
SENIORS LOST GENERATION	MID-LIFE G.I. GENERATION	YOUNG ADULTS SILENT GENERATION	CHILDREN BABY BOOMERS (b. 1946 - 1964)

AGES OF GENERATIONS			
SENIORS SILENT GENERATION	MID-LIFE BABY BOOMERS GENERATION X	YOUNG ADULTS MILLENNIALS (b. 1982 - 2000)	CHILDREN GENERATION Z (b. 2001 - 2020)

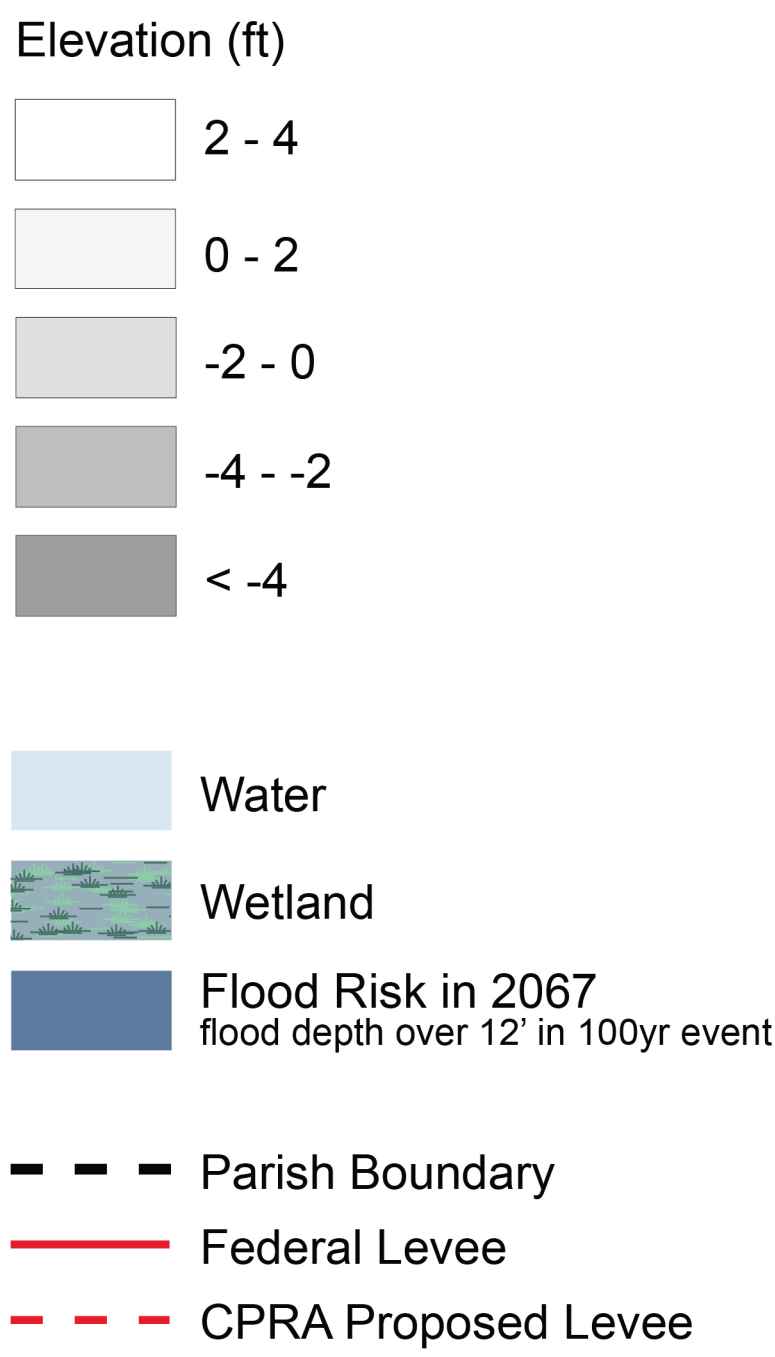
AGES OF GENERATIONS			
SENIORS BABY BOOMERS (b. 1946 - 1964)	MID-LIFE GENERATION X (b. 1965 - 1981)	YOUNG ADULTS MILLENNIALS (b. 1982 - 2000)	CHILDREN GENERATION Z GENERATION A

AGES OF GENERATIONS			
SENIORS BABY BOOMERS GENERATION X	MID-LIFE MILLENNIALS (b. 1982 - 2000)	YOUNG ADULTS GENERATION Z (b. 2001 - 2020)	CHILDREN GENERATION A (b. 2021 - 2040)

AGES OF GENERATIONS			
SENIORS MILLENNIALS (b. 1982 - 2000)	MID-LIFE GENERATION Z (b. 2001 - 2020)	YOUNG ADULTS GENERATION A (b. 2021 - 2040)	CHILDREN GENERATION ? (b. 2041 - 2060)



NOTES AND COMMENTS



These bars reflect a rough estimation of improvement or decline in each category. Land Loss and Flood Risk estimations are based on map data provided by CPRA. Economy and Population estimates our understanding of expected consequences that greater land loss and flood risk will have on population movement and economic shifts.



Estimate of land loss and 12 ft. + flood depths for a 100-year flood under the Medium Environmental Scenario in 2067, with CPRA action. This data was originally produced by CPRA to inform the 2017 Coastal Master Plan.