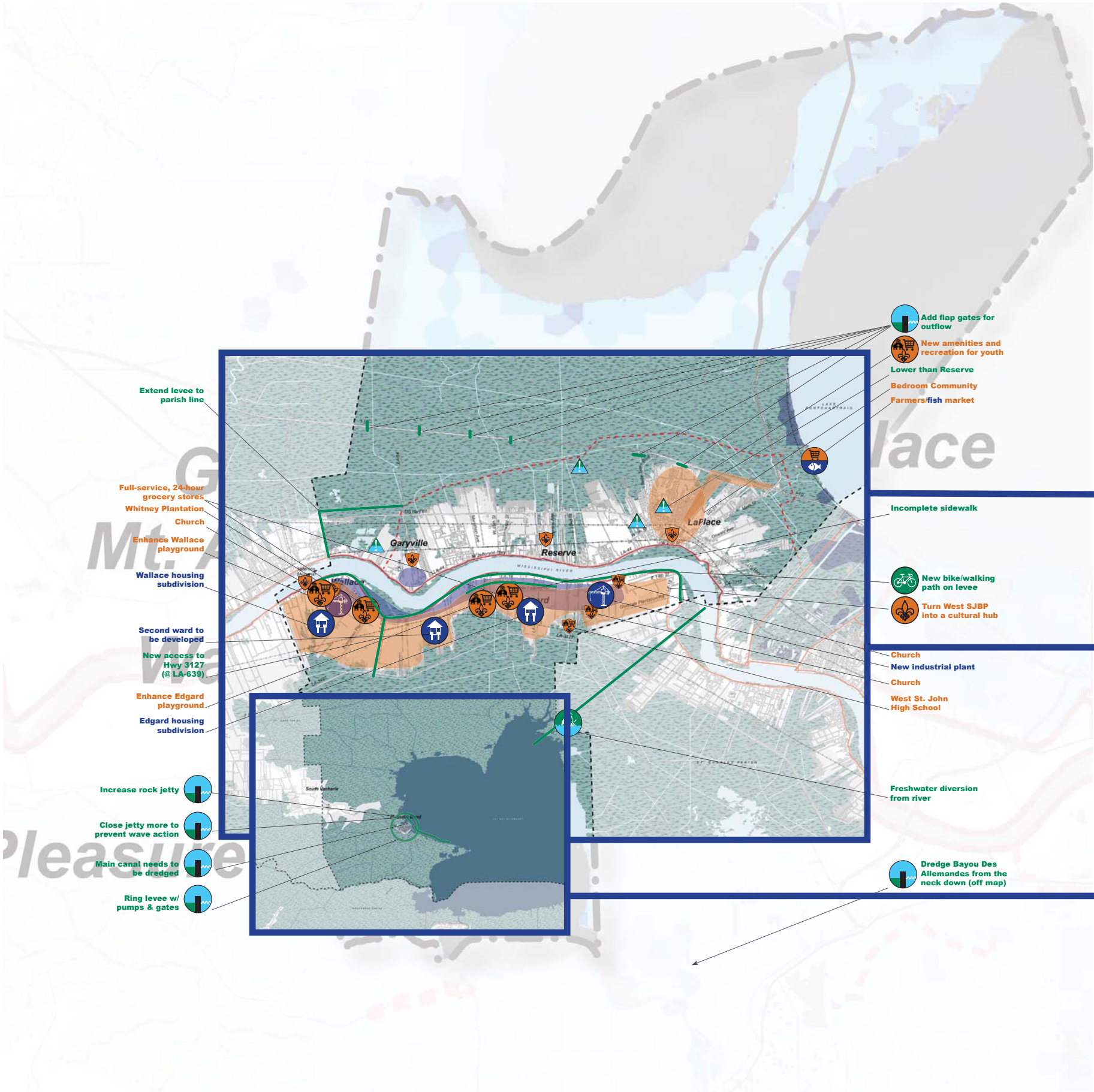


MEETING 2 RESULTS MAP- ST. JOHN PARISH

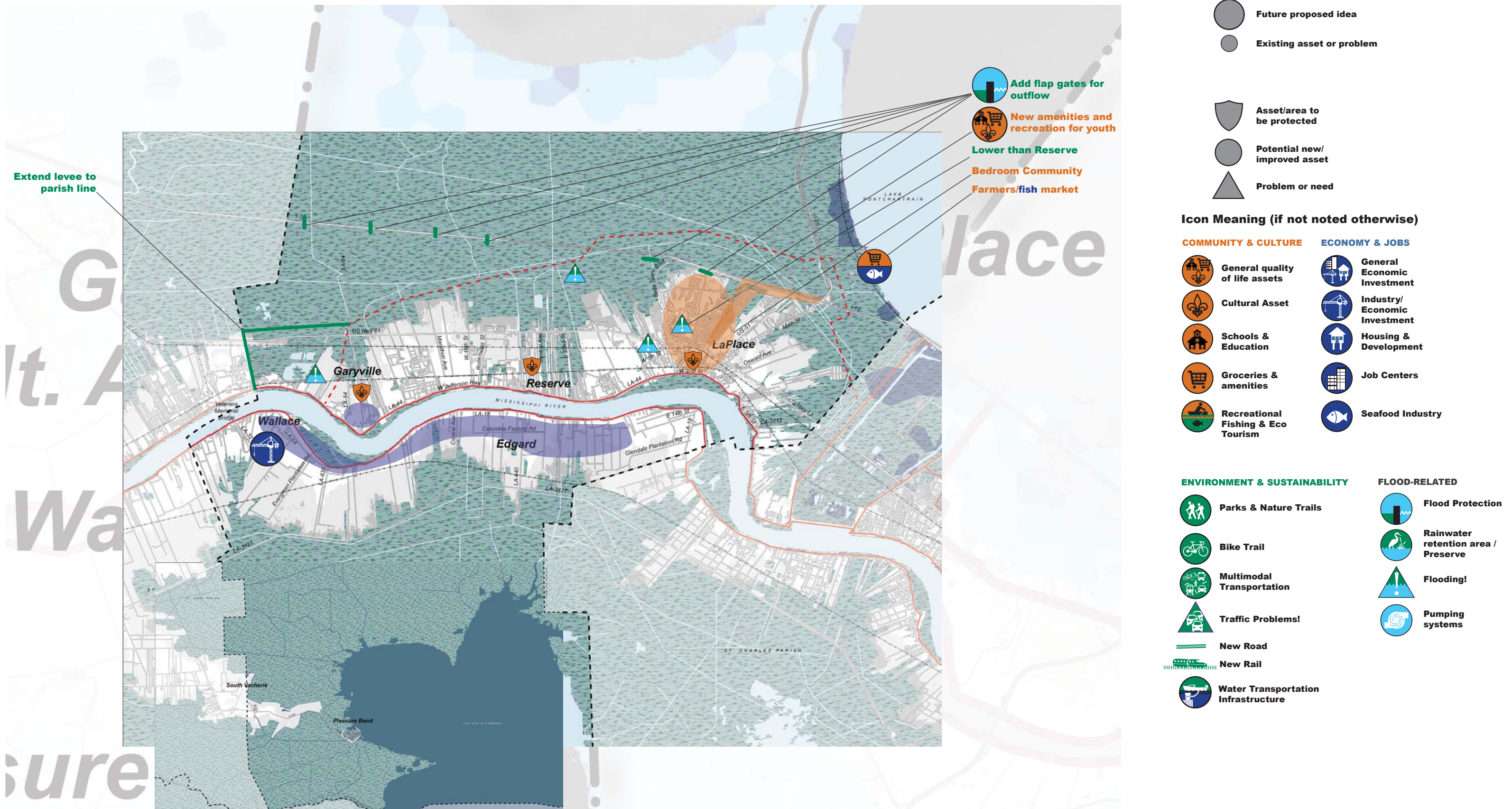


GARYVILLE, RESERVE, LAPLACE MEETING

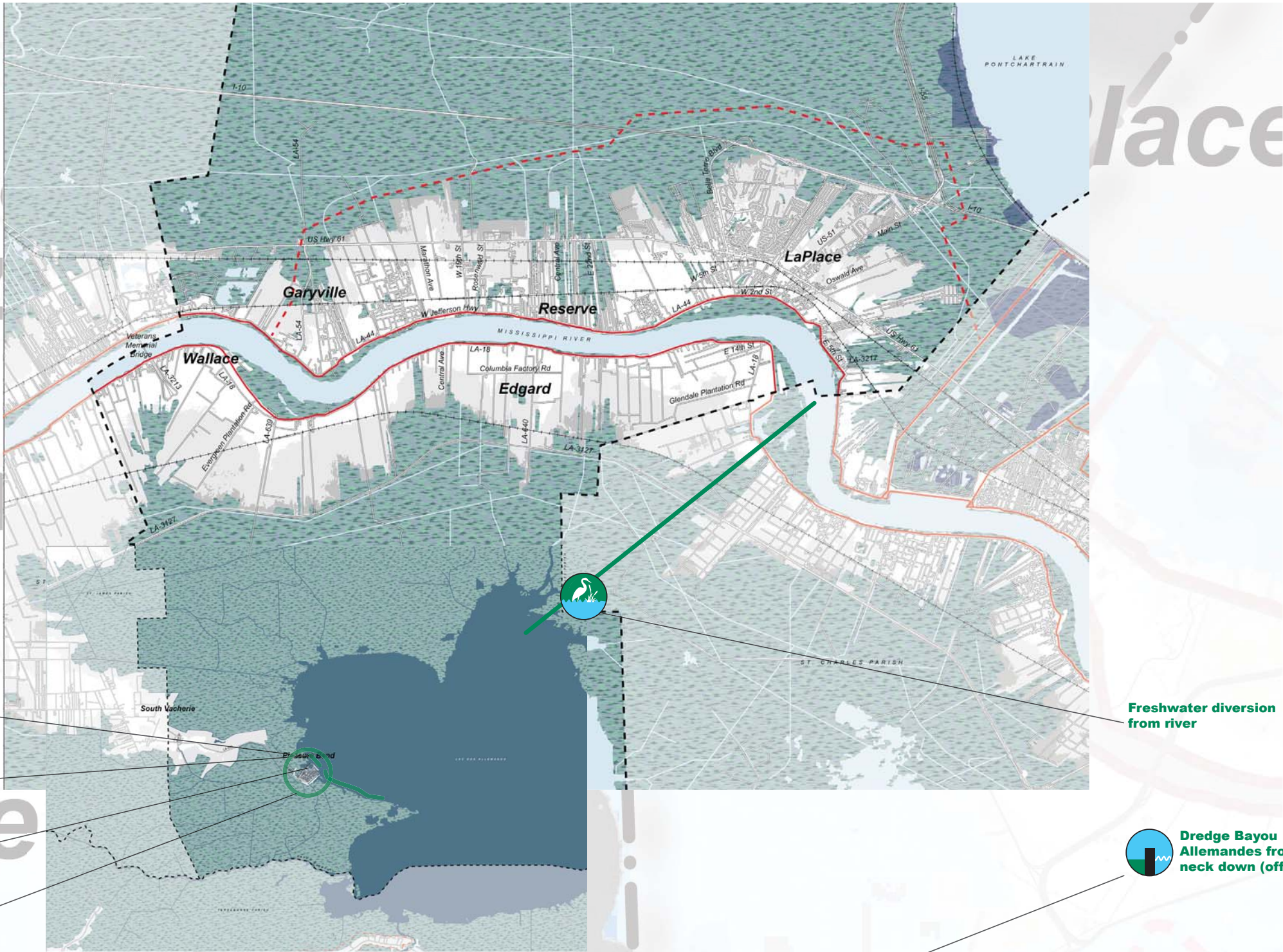
WALLACE, EDGARD MEETING

PLEASURE BEND MEETING

St. John the Baptist Parish - Garyville, Reserve, Laplace Meeting



St. John the Baptist Parish - Pleasure Bend Meeting



- Future proposed idea
- Existing asset or problem

Asset/area to be protected

Potential new/improved asset

Problem or need

Icon Meaning (if not noted otherwise)

- | COMMUNITY & CULTURE | ECONOMY & JOBS |
|------------------------------------|------------------------------|
| General quality of life assets | General Economic Investment |
| Cultural Asset | Industry/Economic Investment |
| Schools & Education | Housing & Development |
| Groceries & amenities | Job Centers |
| Recreational Fishing & Eco Tourism | Seafood Industry |

ENVIRONMENT & SUSTAINABILITY

- Parks & Nature Trails
- Bike Trail
- Multimodal Transportation
- Traffic Problems!
- New Road
- New Rail
- Water Transportation Infrastructure

FLOOD-RELATED

- Flood Protection
- Rainwater retention area / Preserve
- Flooding!
- Pumping systems

St. John the Baptist Parish - Wallace, Edgard Meeting

