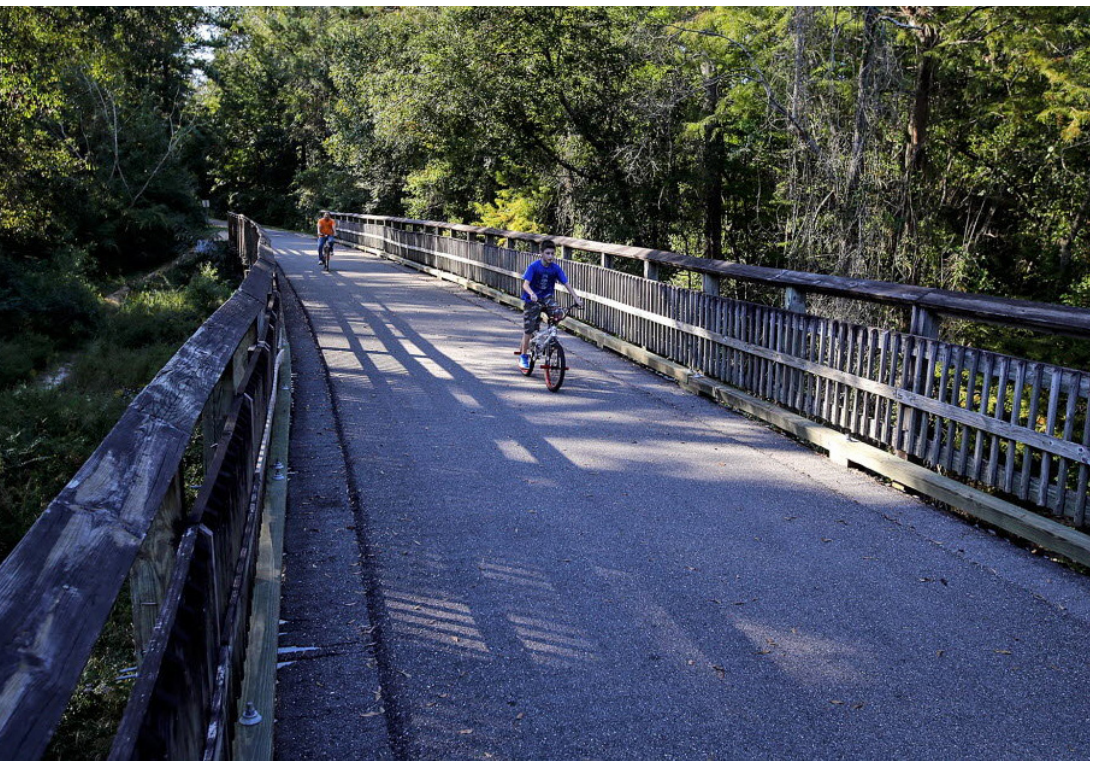




Plan View

1 Tammany Trace Connection



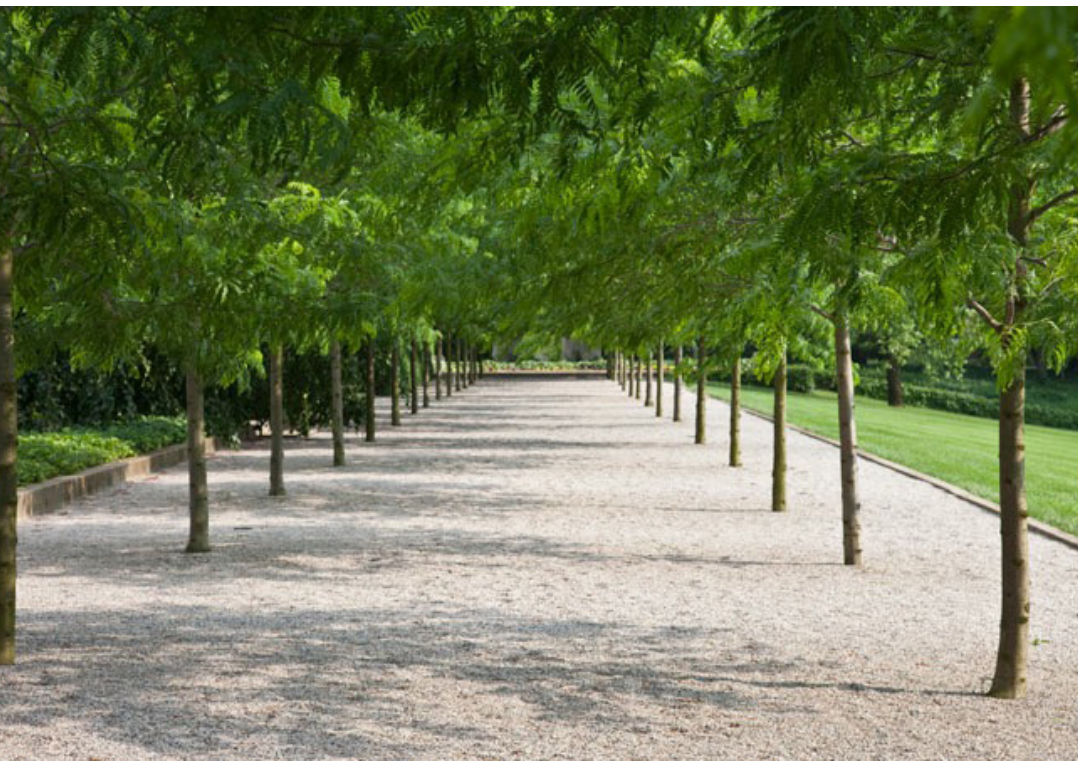
2 Pavilion



3 Trails



4 Promenade



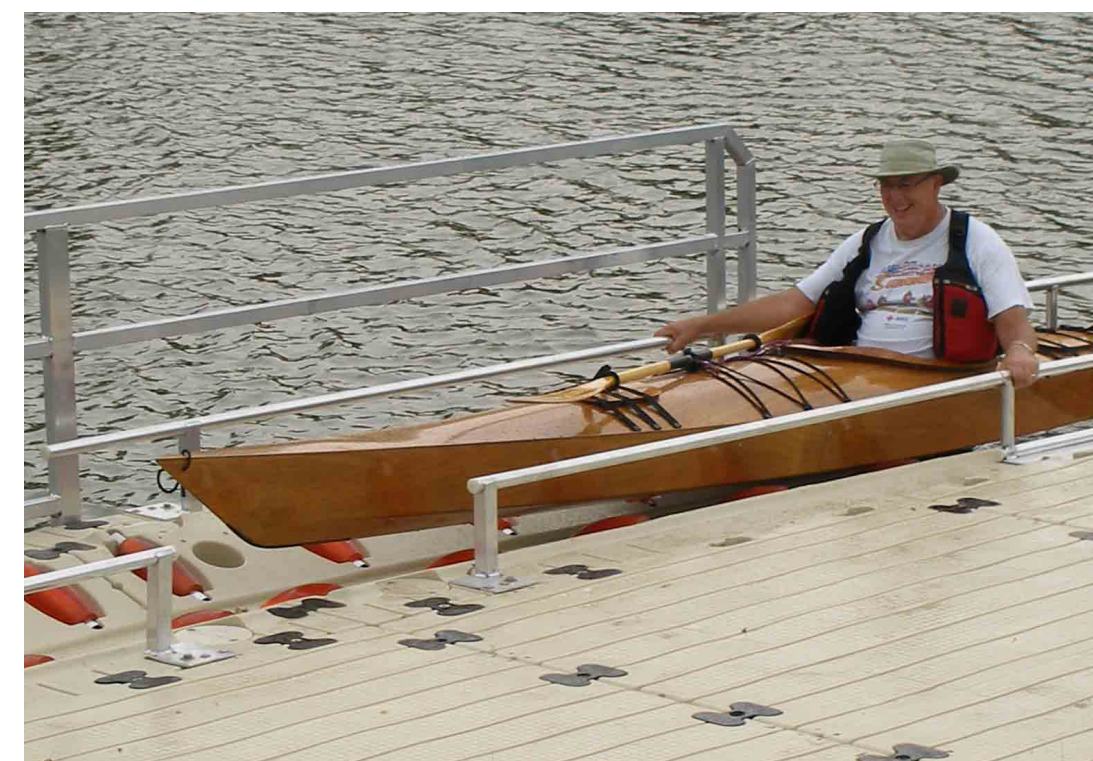
5 Stormwater Display Ponds



6 Native Hardwoods



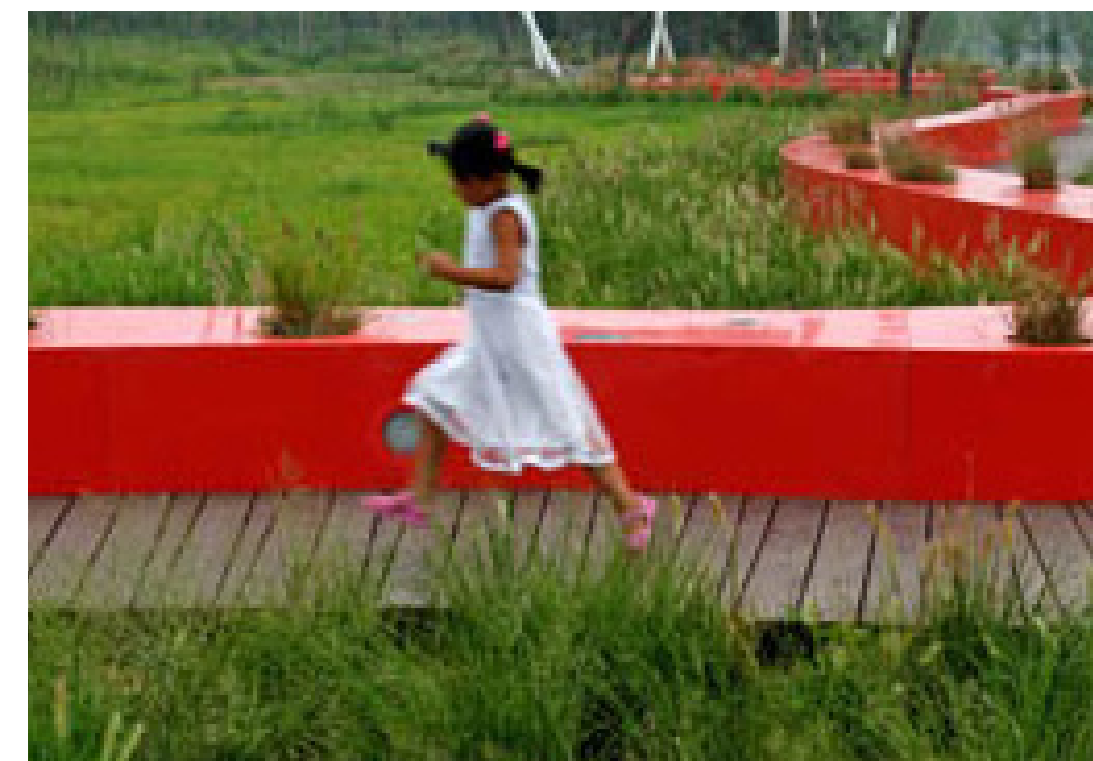
7 Kayak Connection



8 Market



9 Nature Play Area



10 Flex Picnic Space

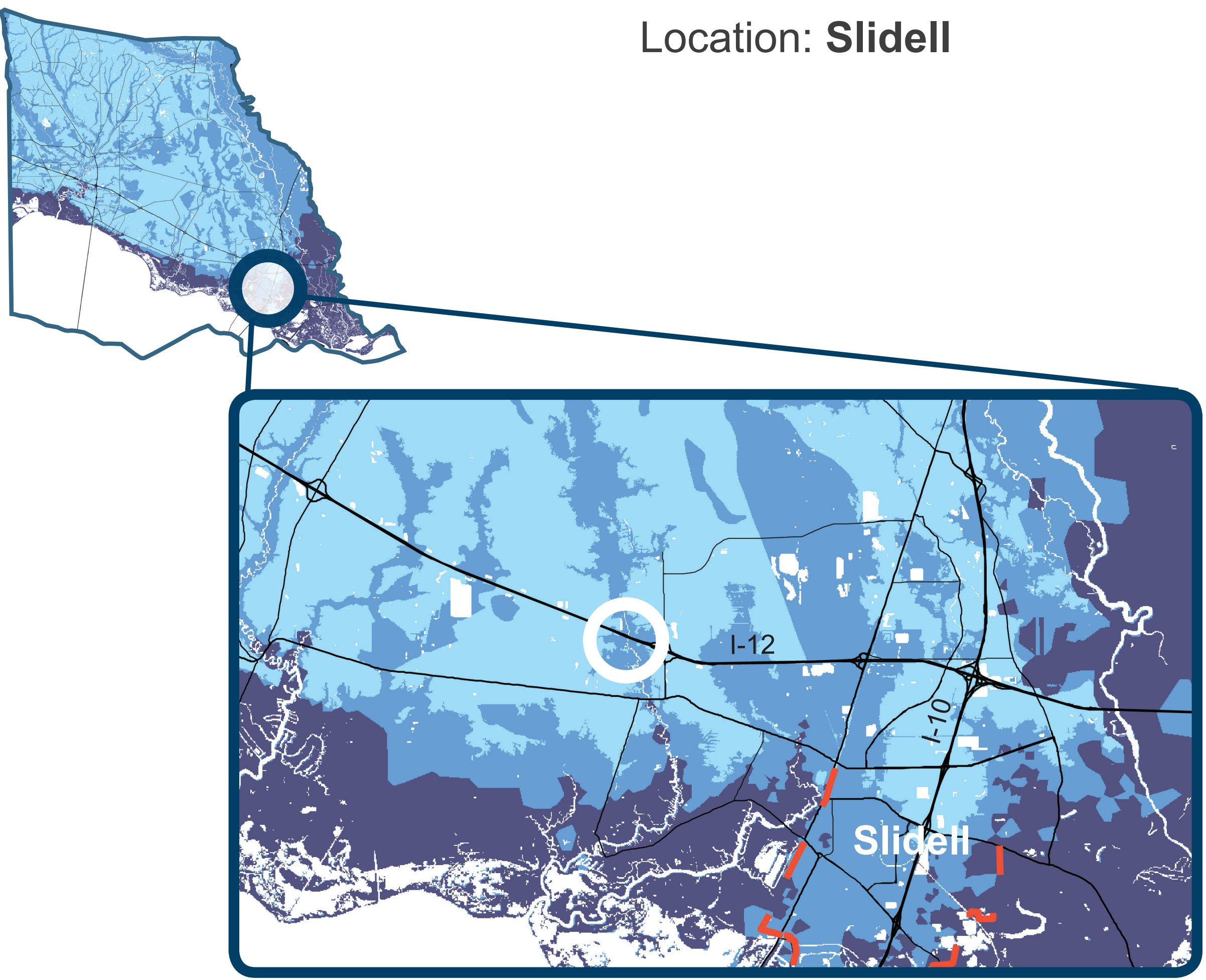


PROPOSAL

In locations projected to have moderate future flood risk, it will become more important to maximize natural areas for their capacity to absorb and retain stormwater, providing flood mitigation to surrounding communities and commercial corridors. This project utilizes a parish-owned parcel west of Airport Road to create a park including increased stormwater capacity, new trail connections to the Tammany Trace, new market and picnic spaces, a promenade and educational signage and installations outlining the importance of stormwater management in Louisiana.

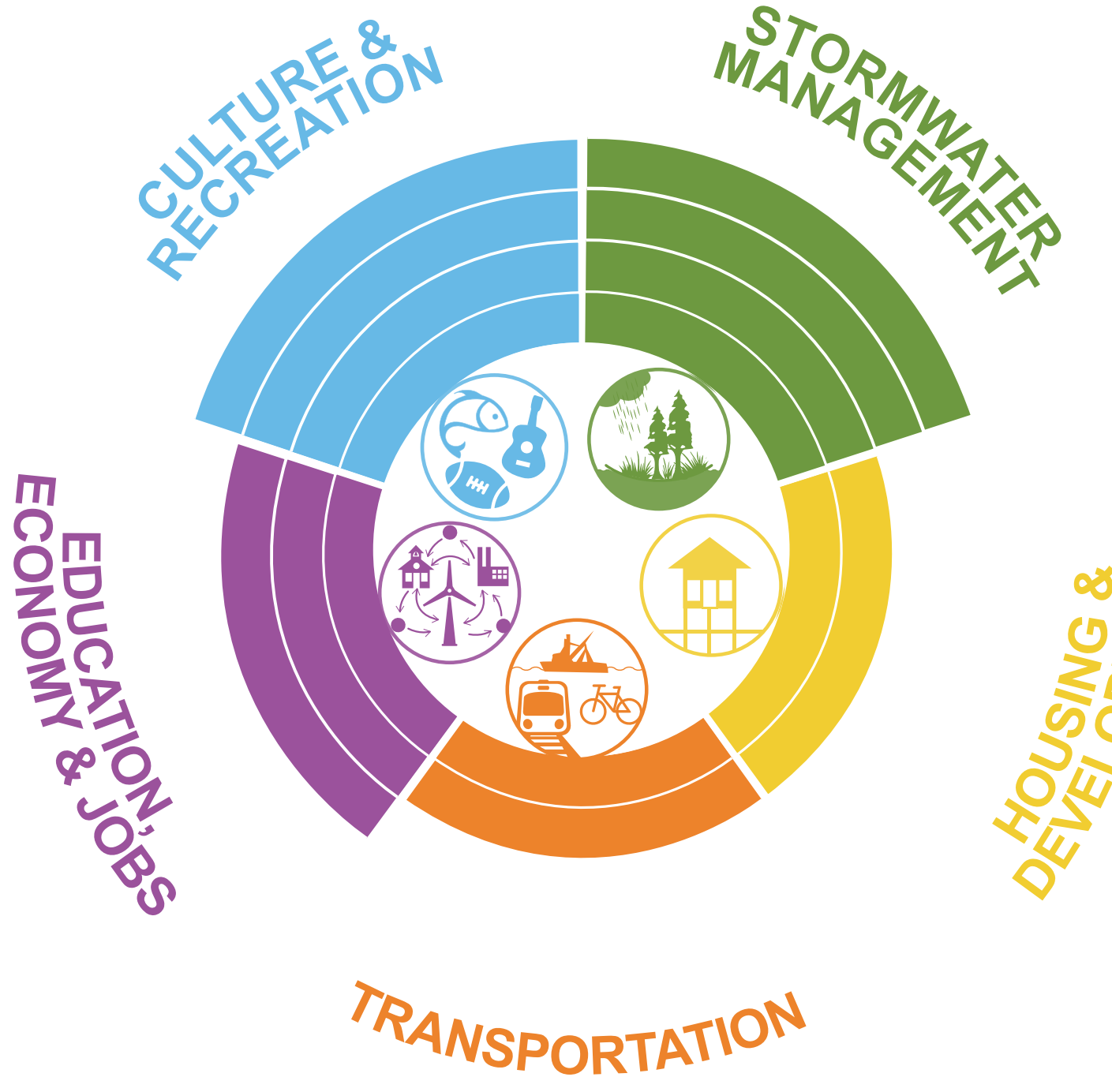
Key Info

Project Area	48 acres
LA SAFE Investment	Up to \$5.0M
Estimated Project Cost	\$5.0M
Partners	St. Tammany Parish, FEMA, City of Slidell; potential corporate partners via Walmart/ Walton Family Foundation and Northshore Mall
	Location: Slidell



Source: CPRA & FEMA

Community Benefits



Enhances stormwater capacity and infiltration rates within the critical drainage area, reducing flood risk to surrounding commercial developments.



Creates a community asset and provides flood risk relief, increasing property values for nearby commercial and residential corridors.



Reduces potential for street flooding and danger to motorists by detaining stormwater runoff; increases neighborhood walkability and connectivity to nature.



Creates an educational tool highlighting the benefits of stormwater management projects; creates new marketplace for vendors and entrepreneurs.



Provides community recreational opportunities through access to water and trails; creates new event spaces and a cultural and social hub.

COMMENTS